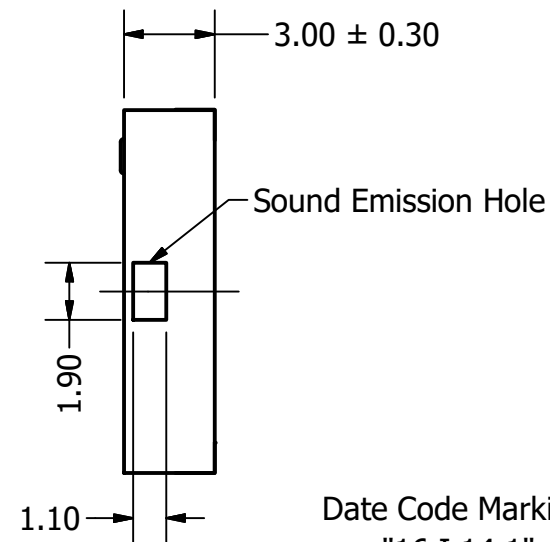
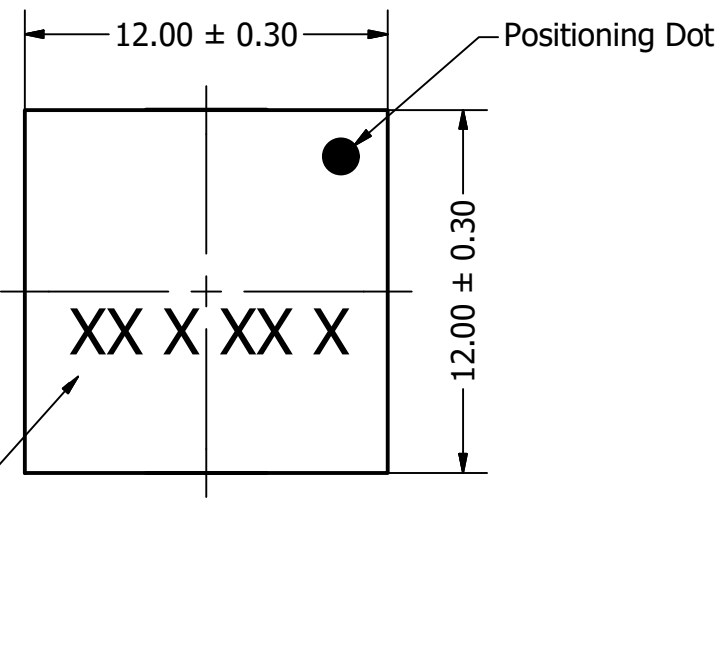


Part Number:	TP124003-2	
DESCRIPTION:	Piezo Transducer	
DRAWN	CJ	9/22/2016
CHECKED	P.D.	9/22/2016
APPROVED	J.S.	9/22/2016
This document contains data proprietary to DB Unlimited. Any use or reproduction, in any form, without prior written permission of DB Unlimited is prohibited. All terms and conditions can be found at www.dbunlimitedco.com		

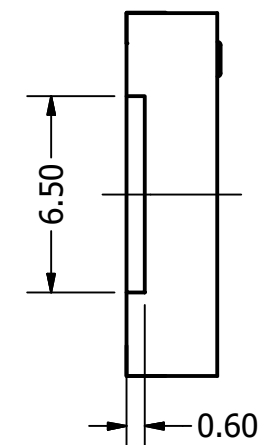
Side View (1)



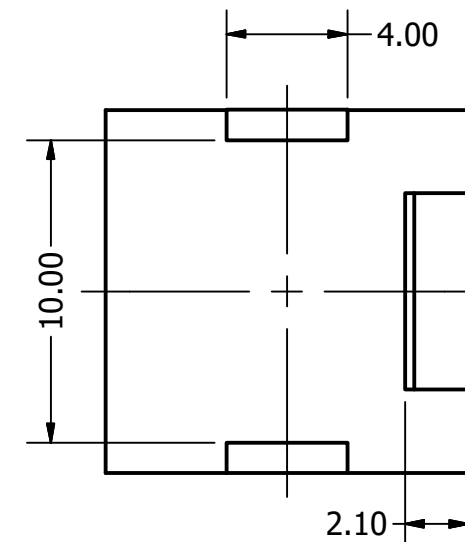
Top View



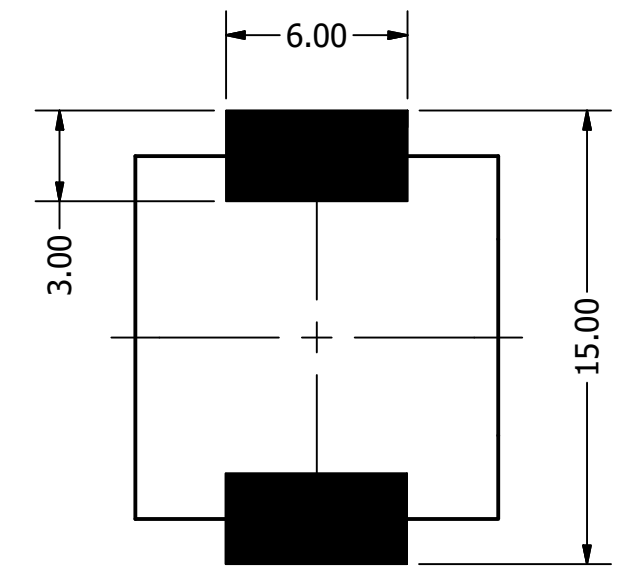
Side View (2)



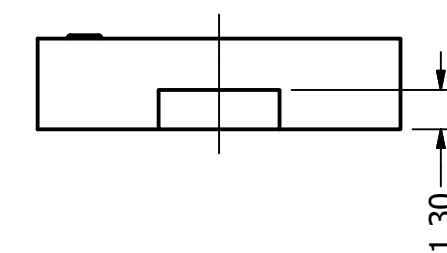
Bottom View



Layout Pattern



Front View



			REVISION HISTORY			
Items	Specifications	Conditions	REV	DESCRIPTION	DATE	APPROVED
Sound Pressure Level	75	dB (@ 10cm)		Released from Engineering	10/21/2013	J.S.
Resonant Frequency	4,000	Hz	1	Updated Operating and Storage Temperature	8/7/2014	C.E.
Rated Voltage	3	V	2	1.) Sound Emission hole 0.9 mm change to 1.3 mm 2.) Modified Date Code Marking	11/17/2015	C.E.
Voltage Range	1 ~ 25	V	3	Updated to new template	9/22/2016	C.E.
Capacitance	16,000	pF	4	Sound Emission Hole change 1.3mm to 1.1mm	2/24/2017	C.E.
Max. Rated Current	5	mA				
Storage Temperature	-40 ~ +85	°C				
Operating Temperature	-40 ~ +85	°C				
Connection Method	Surface Mount Pads		NOTES			
Mount Type	Surface Mount		1) All dimensions are in mm unless otherwise noted			
Housing Material	LCP		2) All tolerances are ± 0.5 mm unless otherwise noted			
Weight	0.3	g	3) All parts meet RoHS			
			4) Subject to change or redrawn without notice			

X-ON Electronics

Largest Supplier of Electrical and Electronic Components

Click to view similar products for [Speakers & Transducers](#) category:

Click to view products by [DB Unlimited](#) manufacturer:

Other Similar products are found below :

[FC-30814-P127](#) [AS02832MR-2-R](#) [PB-1220PE](#) [PB-2015PQ](#) [900-00001](#) [AB2025B-LW50-R](#) [SWFK-31736-000](#) [PT-2065FW](#) [PT-4175W](#) [AT-2830-TW-LW35-R](#) [ED-30761-000](#) [CI-30120-A42](#) [SMT-0440-T-2-R](#) [PB-0927PQ](#) [BF-7083-000](#) [SMS2020-08H4.5 LF](#) [BDT1717-08H6.5W56MLF](#) [GSPK1003PN-8R0.2W-L100](#) [GSPK151103TN-8R0.2W](#) [GSPK2014035PN-8R0.5W-L100](#) [AS03608MR-LW100-R](#) [24520](#) [SMT-0540-S-2-R](#) [1450069](#) [9091653](#) [9091661](#) [IPS-G6000-5](#) [9090231](#) [FS50MS0820-H9.7](#) [FS4014-4-2W](#) [PBM4-13.B29R.A115.0663](#) [PBM4-13.B31R.A115.0663](#) [PBM4-13.B33R.A115.0663](#) [PBM4-13.B35R.A115.0663](#) [A-10-6-BG360-HD1Z-GA-M4Z-ZW](#) [A-10-6-BG410-HD1Z-AA-AGZ-ZW](#) [A-10-6-BG410-HD1Z-AA-M4Z-ZW](#) [A-10-6-BG410-HD1Z-FC-AGZ-ZW](#) [A-10-6-BG410-HD1Z-GA-M4Z-ZW](#) [A-10-6-BG310-HD1Z-AA-AGZ-ZW](#) [A-10-6-BG310-HD1Z-AA-M4Z-ZW](#) [A-10-6-BG310-HD1Z-GA-M4Z-ZW](#) [A-10-6-BG316-HD1Z-AA-M4Z-ZW](#) [A-10-6-BG325-HD1Z-AA-AGZ-ZW](#) [A-10-6-BG325-HD1Z-AA-M4Z-ZW](#) [A-10-6-BG340-HD1Z-AA-AGZ-ZW](#) [A-10-6-BG340-HD1Z-AA-M4Z-ZW](#) [A-10-6-BG340-HD1Z-GA-M4Z-ZW](#) [A-10-6-BG360-GT1Z-AA-M4Z-ZW](#) [A-10-6-BG360-HD1Z-AA-AGZ-ZW](#)