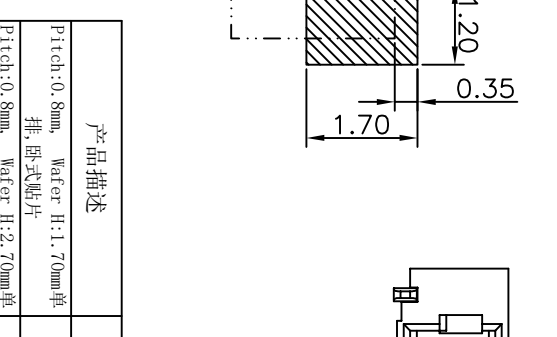
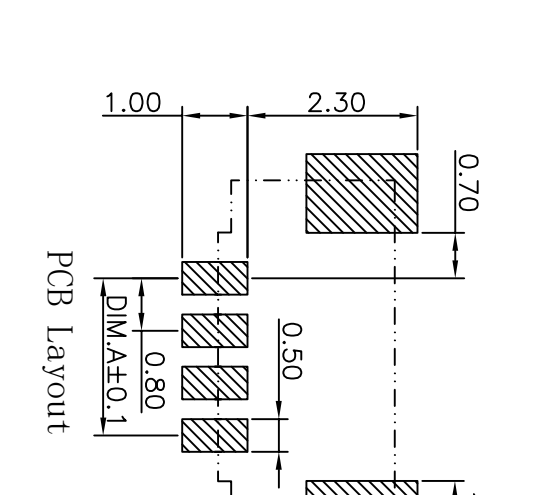
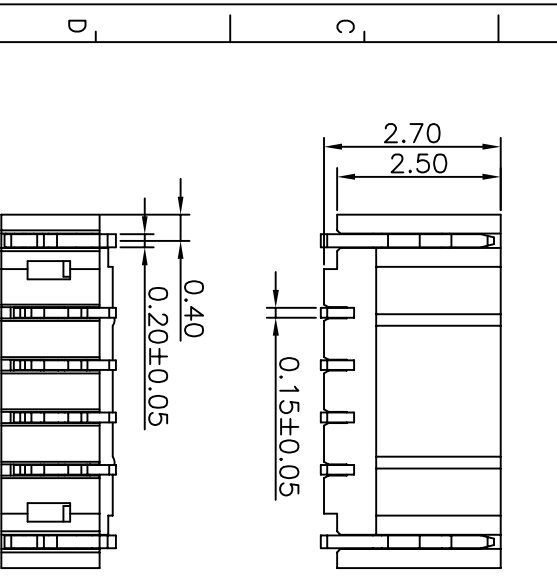


**SPECIFICATIONS**

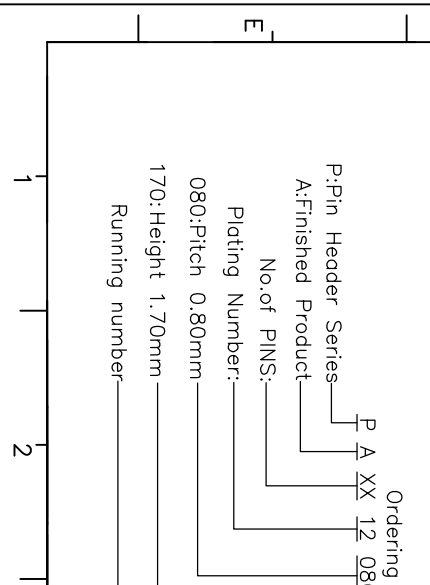
Current Rating: 0.5A AC,DC  
 Voltage Rating: 30V AC,DC  
 Temperature Range: -25°C ~ +85°C  
 Contact Resistance: 20mΩ Max.  
 Insulation Resistance: 100MΩ Min.  
 Withstanding Voltage: 200V AC/minute  
 Pin Material: Phosphor Bronze/Gold Flash  
 Solder Tabs: Phosphor Bronze/Gold Flash  
 Material:  
 Wafer: LCP,UL94V-0  
 Color: Natural(Beige)、Black

REV	LOCAS	DESCRIPTION	DRAW	DATE
A0	NEW	PERLIMINARY	LONG	2017.12.19
A1		UPDATED	LIU	2019.10.22
A2		UPDATED	LIU	2020.07.01
A3		变更料号	LIU	2022.05.27



**PCB Layout**

Part No.	Dimensions
PA0212080170-75-XXSMS	A 0.80 B 3.80
PA0312080170-75-XXSMS	A 1.60 B 4.60
PA0412080170-75-XXSMS	A 2.40 B 5.40
PA0512080170-75-XXSMS	A 3.20 B 6.20
PA0612080170-75-XXSMS	A 4.00 B 7.00
PA0812080170-75-XXSMS	A 5.60 B 8.60
PA1012080170-75-XXSMS	A 7.20 B 10.20
PA1412080170-75-XXSMS	A 10.40 B 13.40
PA2012080170-75-XXSMS	A 15.20 B 18.20



**Ordering Information**

P A XX 12 080 170-75-XX S M S

P:Pin Header Series  
 A:Finished Product  
 No.of PINS:  
 Plating Number:  
 080:Pitch 0.80mm  
 170:Height 1.70mm  
 Running number

S:SMT TYPE  
 D:DIP TYPE  
 M:Male(排针)  
 F:Female(排母)  
 S:Single(单排)  
 D:Double(双排)  
 XX:Colour  
 01:Nature (米色)  
 02:Black (黑色)

**MEASURE POINT:**

QUADRANT POINT (Q)  
 TANGENCY POINT (T)  
 INTERSECTION POINT (P)

**UNLESS OTHERWISE SPECIFIED, TOLERANCE:**

Symbol	Value
X	±0.20
XX	±0.15
XXX	±0.10
ANGULAR	±5°

**D-CHAIN**

Dongguan D-CHAIN Precision Components Co.,Ltd

DRAWN	LONG	DATE	2017.12.19	TITLE:
CHECKED		DATE		Pitch:0.8mm Wafer H:1.70mm 单排 卧式贴片
APPROVED		DATE		
PART No.	PAXX12080170-75-XXSMS	REV:	A3	SCALE: 1:1
DRAWING No.		SIZE:	A4	SHEET: 1/1

## X-ON Electronics

Largest Supplier of Electrical and Electronic Components

*Click to view similar products for [Headers & Wire Housings](#) category:*

*Click to view products by [D-CHAIN](#) manufacturer:*

Other Similar products are found below :

[0015917161](#) [0022155065](#) [57102-F02-18ULF](#) [58102-G61-06LF](#) [582553-1](#) [01.001.5753.1](#) [0050291907](#) [02.125.8002.8](#) [609-3404](#) [61062-3](#)  
[CSU011177004](#) [622-0430](#) [622-3653LF](#) [63453-116](#) [636-1030](#) [636-1427](#) [636-3427](#) [636-4007](#) [641938-9](#) [65495-038](#) [65692-001LF](#) [65781-018](#)  
[65781-047](#) [65817-010LF](#) [65817-015LF](#) [67095-007LF](#) [67601157](#) [68631-112](#) [699319-000](#) [70.362.1628.0](#) [70-4210](#) [70-4226B](#) [70-4853B](#) [707-](#)  
[5028](#) [71.350.2428.0](#) [733-134](#) [733-162](#) [760-3052](#) [MHR-64-VUAL](#) [80.063.4001.1](#) [800-90-001-10-001000](#) [801-43-002-10-013000](#)  
[801-43-006-10-002000](#) [803-43-024-10-001000](#) [803-93-012-10-001000](#) [8-1437020-4](#) [819-22-004-30-001101](#) [820-22-006-30-001101](#)  
[820-22-008-30-001101](#) [821-22-002-10-001101](#)