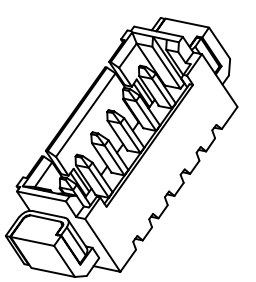
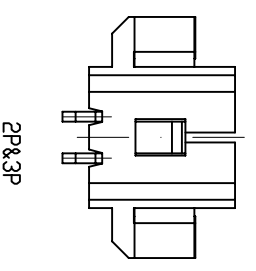
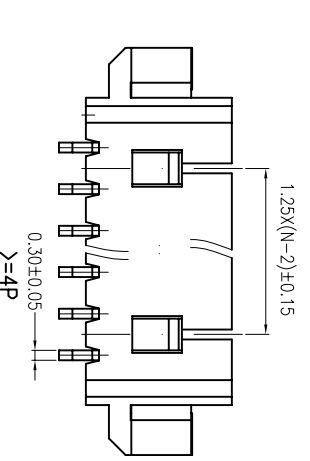
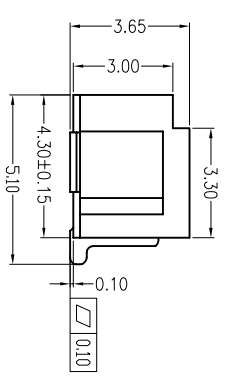
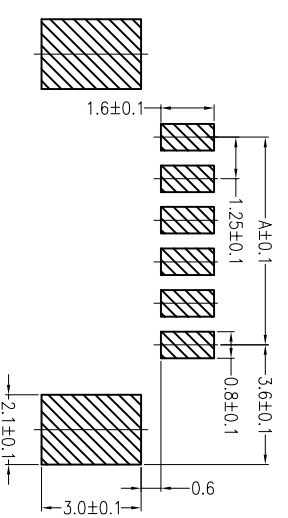
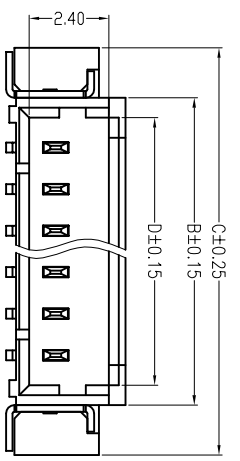
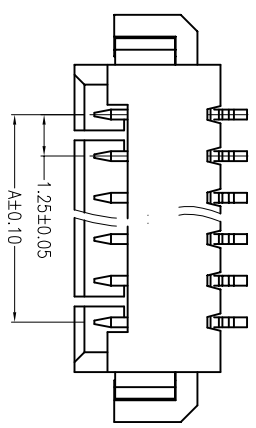


REV	LOCAS	DESCRIPTION	DRAW	DATE
A0	NEW	PERLIMINARY	Andy	2022.06.21



CKT	DimA	DimB	DimC	DimD
2	1.25	4.45	7.45	3.05
3	2.50	5.70	8.70	4.30
4	3.75	6.95	9.95	5.55
5	5.00	8.20	11.20	6.80
6	6.25	9.45	12.45	8.05
7	7.50	10.70	13.70	9.30
8	8.75	11.95	14.95	10.55
9	10.00	13.20	16.20	11.8
10	11.25	14.45	17.45	13.05
11	12.50	15.70	18.70	14.3
12	13.75	16.95	19.95	15.55
13	15.00	18.20	21.20	16.80
14	16.25	19.45	22.45	18.05
15	17.50	20.70	23.70	19.3
16	18.75	21.95	24.95	20.55

RECOMMENDED PCB LAYOUT
GENERAL TOLERANCE ±0.05

- NOTE:
1. MATERIAL:
1.1 HOUSING: LCP, UL94V-0,
1.2 CONTACT: C2680
1.3 PEG: C2680
2. FINISH:
2.1 CONTACT: Plating Tin Over Nickel
2.2 PEG: Plating Tin Over Nickel
3. PERFORMANCE CHARACTERISTICS:
3.1 CURRENT RATING: 1.0 A
3.2 VOLTAGE RATING: 50 VAC
3.3 CONTACT RESISTANCE: 40mΩ MAX
3.4 INSULATION RESISTANCE: 100MΩ MIN
3.5 OPERATING TEMPERATURE: -25°C TO 85°C

Ordering Information

P: Pin Header Series
A: Finished Product
No. of PINS
Plating Number
12. 镀锡
01. 镀金G/F

P A XX XX 125 365-333-XX S M S

S: SMT TYPE
D: DIP TYPE
F: Female(排针)
M: Male(排母)
S: Single(单排)
D: Double(双排)

XX: Colour
01: Nature (本色)
02: Black (黑色)
03: Blue (蓝色)

125: Pitch 1.25mm
365: Height 3.65mm
Running number



Dongguan D-CHAIN Precision Components Co., Ltd

MEASURE POINT: (M)
QUADRANT POINT (Q)
TANGENCY POINT (T)
INTERSECTION POINT (P)

UNLESS OTHERWISE SPECIFIED, TOLERANCE:
X. ±0.25
XX ±0.20
XXX ±0.15
ANGULAR ±3°

DRAWN	Andy	DATE	2022.06.21	TITLE:
CHECKED		DATE		1.25Pitch Wafer SMT TYPE 90°
APPROVED		DATE		
PART No.	PAXXXX125365-333-XXSMS	REV:	A0	SCALE: 1:1
DRAWING No.		SIZE:	A4	SHEET: 1/1



X-ON Electronics

Largest Supplier of Electrical and Electronic Components

Click to view similar products for [Headers & Wire Housings](#) category:

Click to view products by [D-CHAIN](#) manufacturer:

Other Similar products are found below :

[0015917161](#) [0022155065](#) [57102-F02-18ULF](#) [58102-G61-06LF](#) [582553-1](#) [01.001.5753.1](#) [0050291907](#) [02.125.8002.8](#) [609-3404](#) [61062-3](#)
[CSU011177004](#) [622-0430](#) [622-3653LF](#) [63453-116](#) [636-1030](#) [636-1427](#) [636-3427](#) [636-4007](#) [641938-9](#) [65495-038](#) [65692-001LF](#) [65781-018](#)
[65781-047](#) [65817-010LF](#) [65817-015LF](#) [67095-007LF](#) [67601157](#) [68631-112](#) [699319-000](#) [70.362.1628.0](#) [70-4210](#) [70-4226B](#) [70-4853B](#) [707-](#)
[5028](#) [71.350.2428.0](#) [733-134](#) [733-162](#) [760-3052](#) [MHR-64-VUAL](#) [80.063.4001.1](#) [800-90-001-10-001000](#) [801-43-002-10-013000](#)
[801-43-006-10-002000](#) [803-43-024-10-001000](#) [803-93-012-10-001000](#) [8-1437020-4](#) [819-22-004-30-001101](#) [820-22-006-30-001101](#)
[820-22-008-30-001101](#) [821-22-002-10-001101](#)