

REV	LOCAS	DESCRIPTION	DRAW	DATE
A0	NEW	PERLIMINARY	Long	2018.01.08
A1		UPDATED	LIU	2019.03.26
A2		UPDATED	LIU	2019.05.14
A3	△3	UPDATED	LIU	2021.03.25
A4		修改产品外观	LIU	2022.06.02


SPECIFICATIONS

Current Rating: 1A AC,DC
Voltage Rating: 50V AC,DC
Temperature Range: -25°C ~ +85°C
Contact Resistance: 20mΩ Max.
Insulation Resistance: 100MΩ Min.
Withstanding Voltage: 500V AC/minute
Pin Material: Phosphor Bronze/Tin-plated
Solder Tabs: Bass/Tin-plated
Material: Nylon 6T UL94V-0
Color: Natural(Beige)

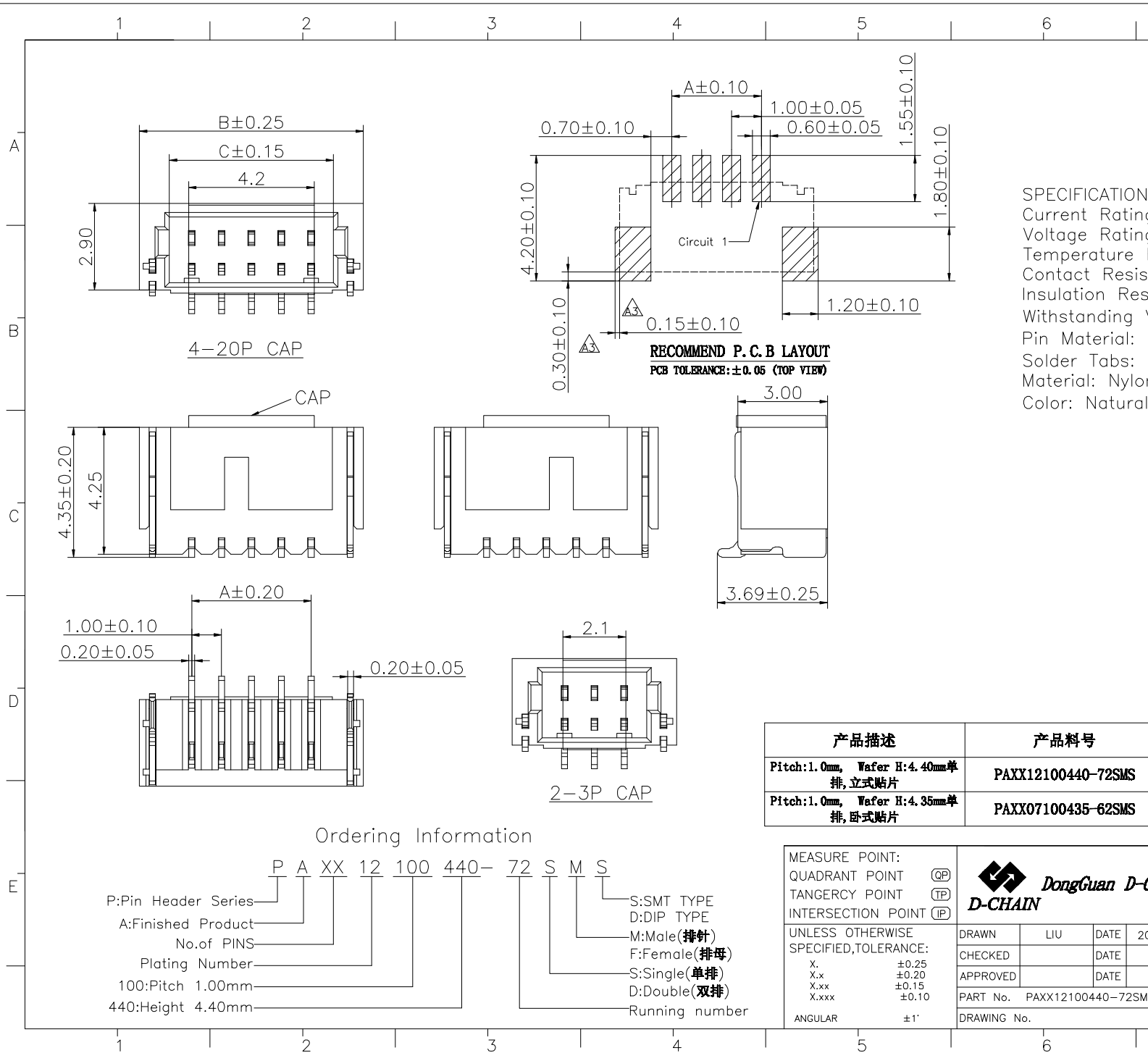
Circuits	Dimensions mm		
	A	B	C
02	1.00	4.50	2.50
03	2.00	5.50	3.50
04	3.00	6.50	4.50
05	4.00	7.50	5.50
06	5.00	8.50	6.50
07	6.00	9.50	7.50
08	7.00	10.50	8.50
09	8.00	11.50	9.50
10	9.00	12.50	10.50
11	10.00	13.50	11.50
12	11.00	14.50	12.50
13	12.00	15.50	13.50
14	13.00	16.50	14.50
15	14.00	17.50	15.50
16	15.00	18.50	16.50
17	16.00	19.50	17.50
18	17.00	20.50	18.50
19	18.00	21.50	19.50
20	19.00	22.50	20.50

产品描述	产品料号
Pitch:1.0mm, Wafer H:4.40mm单排, 立式贴片	PAXX12100440-72SMS
Pitch:1.0mm, Wafer H:4.35mm单排, 卧式贴片	PAXX07100435-62SMS

MEASURE POINT: QUADRANT POINT (QP) TANGENCY POINT (TP) INTERSECTION POINT (IP)	
UNLESS OTHERWISE SPECIFIED, TOLERANCE:	
X. ±0.25	
X.x ±0.20	
X.xx ±0.15	
X.xxx ±0.10	
ANGULAR ±1'	

 **DongGuan D-CHAIN Precision Components CO, Ltd**
D-CHAIN

DRAWN	LIU	DATE	2019.03.26	TITLE:	
CHECKED		DATE		Pitch:1.0mm Wafer H:4.40mm单排, 立式贴片	
APPROVED		DATE		REV: A4	SCALE: 1:1
PART No. PAXX12100440-72SMS				UNIT: mm	
DRAWING No.				SIZE: A4	SHEET: 1/1



Ordering Information

P A XX 12 100 440- 72 S M S

P:Pin Header Series
A:Finished Product
No.of PINS
Plating Number
100:Pitch 1.00mm
440:Height 4.40mm

S:SMT TYPE
D:DIP TYPE
M:Male(排针)
F:Female(排母)
S:Single(单排)
D:Double(双排)
Running number

X-ON Electronics

Largest Supplier of Electrical and Electronic Components

Click to view similar products for [Headers & Wire Housings](#) category:

Click to view products by [D-CHAIN](#) manufacturer:

Other Similar products are found below :

[0015917161](#) [0022155065](#) [57102-F02-18ULF](#) [58102-G61-06LF](#) [582553-1](#) [01.001.5753.1](#) [0050291907](#) [02.125.8002.8](#) [609-3404](#) [61062-3](#)
[CSU011177004](#) [622-0430](#) [622-3653LF](#) [63453-116](#) [636-1030](#) [636-1427](#) [636-3427](#) [636-4007](#) [641938-9](#) [65495-038](#) [65692-001LF](#) [65781-018](#)
[65781-047](#) [65817-010LF](#) [65817-015LF](#) [67095-007LF](#) [67601157](#) [68631-112](#) [699319-000](#) [70.362.1628.0](#) [70-4210](#) [70-4226B](#) [70-4853B](#) [707-](#)
[5028](#) [71.350.2428.0](#) [733-134](#) [733-162](#) [760-3052](#) [MHR-64-VUAL](#) [80.063.4001.1](#) [800-90-001-10-001000](#) [801-43-002-10-013000](#)
[801-43-006-10-002000](#) [803-43-024-10-001000](#) [803-93-012-10-001000](#) [8-1437020-4](#) [819-22-004-30-001101](#) [820-22-006-30-001101](#)
[820-22-008-30-001101](#) [821-22-002-10-001101](#)