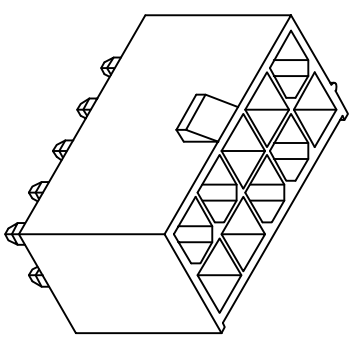
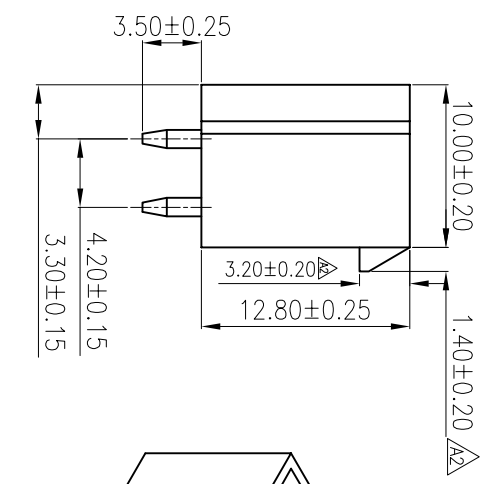


RECOMMENDED PCB LAYOUT  
TOLERANCE: ±0.05

| REV | LOOKS   | DESCRIPTION | DRWN | DATE       |
|-----|---------|-------------|------|------------|
| A0  | NEW     | PERLIMINARY | Long | 2018.08.27 |
| A1  | UPDATED |             | LUU  | 2019.06.17 |
| A2  | UPDATED |             | LUU  | 2019.08.28 |

**SPECIFICATIONS**  
 Current Rating: 9A AC,DC  
 Voltage Rating: 800V AC,DC  
 Temperature Range: -25°C ~ +85°C  
 Contact Resistance: 10mΩ Max.  
 Insulation Resistance: 1000MΩ Min.  
 Withstanding Voltage: 1500V AC/minute  
 Pin Material: Brass/Tin-plated  
 Material: Nylon 66, UL94V-0  
 Color: Natural(Translucent)

|          |                     |               |       |
|----------|---------------------|---------------|-------|
| 24       | PA2412420130-127DMD | 46.20         | 52.20 |
| 22       | PA2212420130-127DMD | 42.00         | 47.80 |
| 20       | PA2012420130-127DMD | 37.80         | 43.50 |
| 18       | PA1812420130-127DMD | 33.60         | 39.40 |
| 16       | PA1612420130-127DMD | 29.40         | 35.20 |
| 14       | PA1412420130-127DMD | 25.20         | 31.00 |
| 12       | PA1212420130-127DMD | 21.00         | 26.75 |
| 10       | PA1012420130-127DMD | 16.80         | 22.45 |
| 8        | PA0812420130-127DMD | 12.60         | 18.20 |
| 6        | PA0612420130-127DMD | 8.40          | 14.00 |
| 4        | PA0412420130-127DMD | 4.20          | 9.80  |
| 2        | PA0212420130-127DMD | /             | 5.60  |
| Circuits | Part No.            | Dimension(mm) |       |
|          |                     | A             | B     |



**Ordering Information**

P A XX 12 420 130-127 D M D  
 P:Pin Header Series  
 A:Finished Product  
 No.of PINS:  
 Plating Number:  
 420Pitch 4.20mm  
 130:Height 13.0mm

S:SMT TYPE  
 D:DIP TYPE  
 M:Male(排针)  
 F:Female(排母)  
 S:Single(单排)  
 D:Double(双排)  
 Running number



Dongguan D-CHAIN Precision Components Co.,Ltd

| MEASURE POINT: | QUADRANT POINT | TANGENCY POINT | INTERSECTION POINT |
|----------------|----------------|----------------|--------------------|
| X              | Xx             | Xxx            | ANGULAR            |
| ±0.25          | ±0.20          | ±0.15          | ±5°                |

| UNLESS OTHERWISE SPECIFIED, TOLERANCE: | DRAWN               | DATE       | TITLE:                       |
|--|---------------------|------------|------------------------------|
| ±0.25                                  | LUU                 | 2019.06.17 | PITCH4.20mm H13.0mm DIP TYPE |
| ±0.20                                  | CHECKED             | DATE       |                              |
| ±0.15                                  | APPROVED            | DATE       |                              |
| ±5°                                    | PART No.            | REV: A2    | SCALE: 1:1                   |
|  | PA0012420130-127DMD | SIZE: A4   | SHEET: 1/1                   |
|  | DRAWING No.         | UNIT: mm   |                              |

## X-ON Electronics

Largest Supplier of Electrical and Electronic Components

*Click to view similar products for [Headers & Wire Housings](#) category:*

*Click to view products by [D-CHAIN](#) manufacturer:*

Other Similar products are found below :

[0015917161](#) [0022155065](#) [57102-F02-18ULF](#) [58102-G61-06LF](#) [582553-1](#) [01.001.5753.1](#) [0050291907](#) [02.125.8002.8](#) [609-3404](#) [61062-3](#)  
[CSU011177004](#) [622-0430](#) [622-3653LF](#) [63453-116](#) [636-1030](#) [636-1427](#) [636-3427](#) [636-4007](#) [641938-9](#) [65495-038](#) [65692-001LF](#) [65781-018](#)  
[65781-047](#) [65817-010LF](#) [65817-015LF](#) [67095-007LF](#) [67601157](#) [68631-112](#) [699319-000](#) [70.362.1628.0](#) [70-4210](#) [70-4226B](#) [70-4853B](#) [707-](#)  
[5028](#) [71.350.2428.0](#) [733-134](#) [733-162](#) [760-3052](#) [MHR-64-VUAL](#) [80.063.4001.1](#) [800-90-001-10-001000](#) [801-43-002-10-013000](#)  
[801-43-006-10-002000](#) [803-43-024-10-001000](#) [803-93-012-10-001000](#) [8-1437020-4](#) [819-22-004-30-001101](#) [820-22-006-30-001101](#)  
[820-22-008-30-001101](#) [821-22-002-10-001101](#)