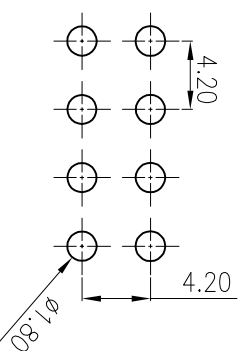


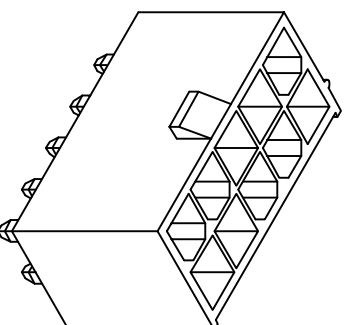
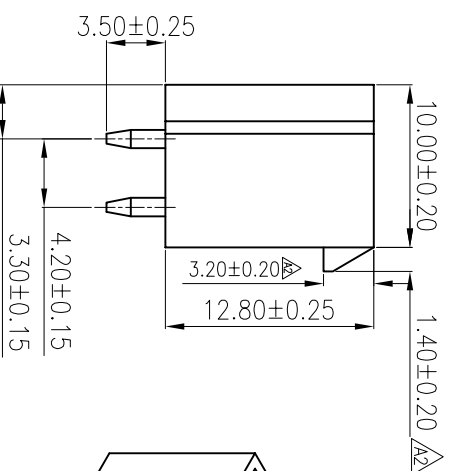
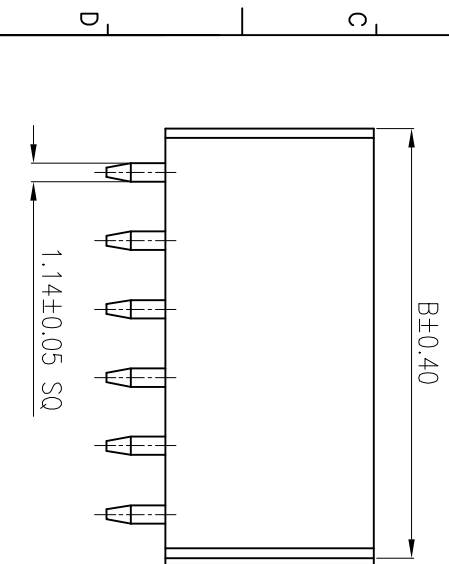
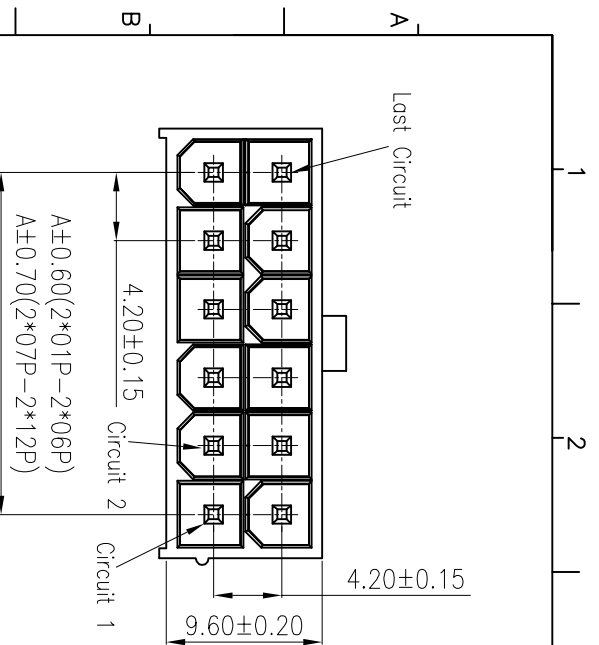
| REV | LOOKS    | DESCRIPTION | DRWN | DATE       |
|-----|----------|-------------|------|------------|
| A0  | NEW      | PERLIMINARY | Long | 2018.08.27 |
| A1  |          | UPDATED     | LUU  | 2019.06.17 |
| A2  | $\Delta$ | UPDATED     | LUU  | 2019.08.28 |

**SPECIFICATIONS**

Current Rating: 9A AC,DC  
Voltage Rating: 800V AC,DC  
Temperature Range: -25°C ~ +85°C  
Contact Resistance: 10mΩ Max.  
Insulation Resistance: 1000MΩ Min.  
Withstanding Voltage: 1500V AC/minute  
Pin Material: Brass/Tin-plated  
Material: Nylon 66, UL94V-0  
Color: Natural(Translucent)



**RECOMMENDED PCB LAYOUT**  
TOLERANCE: ±0.05



| Circuits | Part No.            | Dimension(mm) |
|----------|---------------------|---------------|
|          |                     | A B           |
| 24       | PA2412420130-127DMD | 46.20 52.20   |
| 22       | PA2212420130-127DMD | 42.00 47.80   |
| 20       | PA2012420130-127DMD | 37.80 43.50   |
| 18       | PA1812420130-127DMD | 33.60 39.40   |
| 16       | PA1612420130-127DMD | 29.40 35.20   |
| 14       | PA1412420130-127DMD | 25.20 31.00   |
| 12       | PA1212420130-127DMD | 21.00 26.75   |
| 10       | PA1012420130-127DMD | 16.80 22.45   |
| 8        | PA0812420130-127DMD | 12.60 18.20   |
| 6        | PA0612420130-127DMD | 8.40 14.00    |
| 4        | PA0412420130-127DMD | 4.20 9.80     |
| 2        | PA0212420130-127DMD | / 5.60        |

**Ordering Information**

P A XX 12 420 130-127 D M D  
P: Pin Header Series  
A: Finished Product  
No. of PINS:  
Plating Number:  
420 Pitch 4.20mm  
130: Height 13.0mm

S: SMT TYPE  
D: DIP TYPE  
M: Male(排针)  
F: Female(排母)  
S: Single(单排)  
D: Double(双排)  
Running number



Dongguan D-CHAIN Precision Components Co., Ltd

MEASURE POINT:  
QUADRANT POINT  
TANGENCY POINT  
INTERSECTION POINT

UNLESS OTHERWISE SPECIFIED, TOLERANCE:  
X ±0.25  
XX ±0.15  
XXx ±0.15  
ANGULAR ±5

| DRAWN       | LU                  | DATE  | 2019.06.17 | TITLE:                           |
|-------------|---------------------|-------|------------|----------------------------------|
| CHECKED     |                     | DATE  |            | PITCH: 4.20mm H: 13.0mm DIP TYPE |
| APPROVED    |                     | DATE  |            |                                  |
| PART No.    | PA0012420130-127DMD | REV:  | A2         | SCALE:                           |
| DRAWING No. |                     | SIZE: | A4         | SHEET:                           |
|             |                     | UNIT: | mm         |                                  |

## X-ON Electronics

Largest Supplier of Electrical and Electronic Components

*Click to view similar products for [Headers & Wire Housings](#) category:*

*Click to view products by [D-CHAIN](#) manufacturer:*

Other Similar products are found below :

[0015917161](#) [0022155065](#) [57102-F02-18ULF](#) [58102-G61-06LF](#) [582553-1](#) [01.001.5753.1](#) [0050291907](#) [02.125.8002.8](#) [609-3404](#) [61062-3](#)  
[CSU011177004](#) [622-0430](#) [622-3653LF](#) [63453-116](#) [636-1030](#) [636-1427](#) [636-3427](#) [636-4007](#) [641938-9](#) [65495-038](#) [65692-001LF](#) [65781-018](#)  
[65781-047](#) [65817-010LF](#) [65817-015LF](#) [67095-007LF](#) [67601157](#) [68631-112](#) [699319-000](#) [70.362.1628.0](#) [70-4210](#) [70-4226B](#) [70-4853B](#) [707-](#)  
[5028](#) [71.350.2428.0](#) [733-134](#) [733-162](#) [760-3052](#) [MHR-64-VUAL](#) [80.063.4001.1](#) [800-90-001-10-001000](#) [801-43-002-10-013000](#)  
[801-43-006-10-002000](#) [803-43-024-10-001000](#) [803-93-012-10-001000](#) [8-1437020-4](#) [819-22-004-30-001101](#) [820-22-006-30-001101](#)  
[820-22-008-30-001101](#) [821-22-002-10-001101](#)