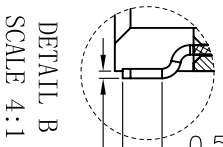
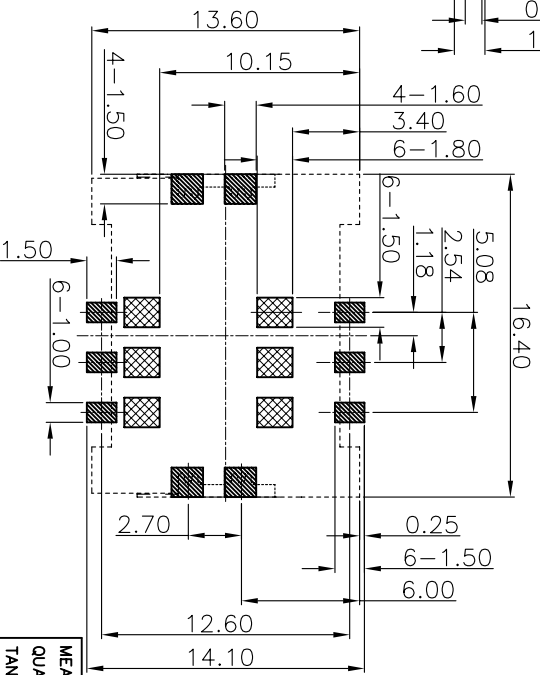
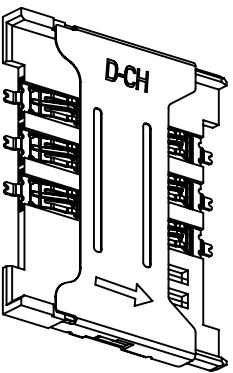
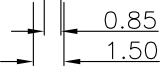
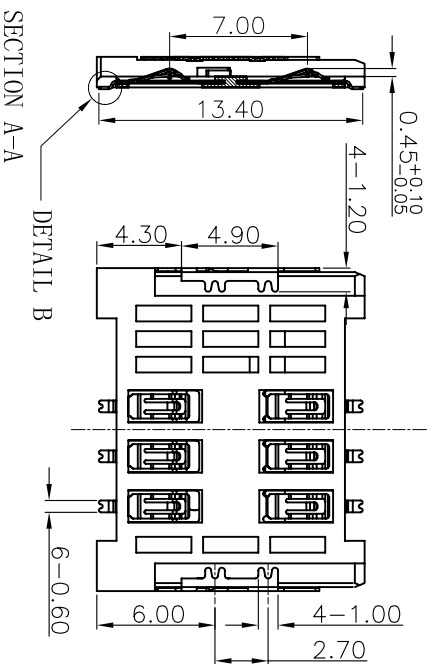
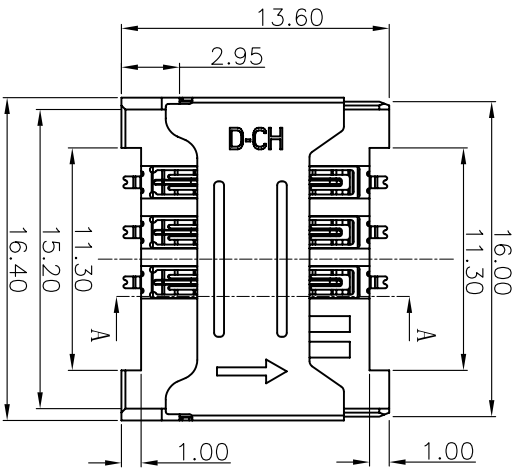


REV	LOCALS	DESCRIPTION	DRAW	DATE
01	NEW	INITIAL RELEASE	Wong	2014.04.16
02	UPDATED	UPDATED	LTAO	2016.01.12
03	UPDATED	UPDATED	LTAO	2016.05.12
04		ECN20170006	Andy	2017.04.08

NOTES:

- MATERIAL:**
 - Housing: High Temperature Thermoplastic UL94V-0; Color Black.
 - Terminal: Copper Alloy.
 - Shell: Stainless Steel
- FINISH:**
 - Terminal: Gold on the Contact Area and Solder Tails, Underplated Nickel Over all.
 - Shell: Plated Gold on the Solder Tails, Underplated Nickel Over all.
- SPECIALITY:**
 - Rated current: 1.0A
 - Rated voltage: 30V
 - Contact Resistance: 50mΩ MAX
 - Insulation Resistance: 100MΩ MIN 100V DC
 - Dielectric withstanding voltage: 100V AC.
 - Solder ability: 245±5°C, 5±0.5s.
 - Durability: 5000 Cycles Min.



ALL SOLDER TAILS

Ordering Information

S:SIM CARD Series
 A:Finished Product
 No. of PINS:06(6PIN)
 Standard Plating

S A 06 01 254 150 -70

Running number:
 150:Height 1.50mm
 254:Pitch 2.54mm

RECOMMEND P.C.B. LAYOUT

TOLERANCE ±0.05
 THESE AREA SHOULD BE FREE OF ANY CONDUCTIVE TRACES
 SMT SOLDER AREA



SHEN ZHEN D-CHAIN TECHNOLOGY CO., LTD

MEASURE POINT: (QP) QUADRANT POINT (TP) TANGENCY POINT (IP) INTERSECTION POINT

UNLESS OTHERWISE SPECIFIED, TOLERANCE:

X	±0.25
Xxx	±0.20
Xxxx	±0.15
ANGULAR	±3°

DESIGN	Wong	DATE	2014.04.16	TITLE	1.5H 6PIN SIM CARD
CHECKED		DATE			
APPROVED		DATE			
PART NO:	S0601254150-70	REV:	04	SCALE:	1:1
DRAWING NO:	DDSS0601254150-70	SIZE:	A4	SHEET:	1/1

X-ON Electronics

Largest Supplier of Electrical and Electronic Components

Click to view similar products for [Memory Card Connectors](#) category:

Click to view products by [D-CHAIN](#) manufacturer:

Other Similar products are found below :

[6407-249V-25273P](#) [6407-249V-25343P](#) [6426-201-21343](#) [69.920.0553.0](#) [MCR60A-98D-2.54DSA\(70\)](#) [809180410000000](#) [DM3AT-SF-PEJM5\(41\)](#) [IC11S-BUR-PNEJL\(71\)](#) [C70210M0083692](#) [252-0144-000](#) [2041353-2](#) [308-DS1P0811-192](#) [HM2P09PDR360N9LF](#) [10014744-011TLF](#) [11327-001](#) [11327-002](#) [NX1-32T-KT3K\(05\)](#) [95622-003LF](#) [84648-056HLF](#) [CCM03-3109 B LFT](#) [MS3116J10-6PW](#) [2309923-1](#) [61126-050CAHLF](#) [GTFP08432B1HR](#) [G85D1160022HHR](#) [SCE2MSDB76A121SN](#) [SCE2MSDZN76A121SN](#) [10014744-011ALF](#) [10014744-011LF](#) [10057542-1211FLF](#) [10067972-000LF](#) [10067972-050LF](#) [10122302-20110LF](#) [G85D1162022HHR](#) [TF-05A](#) [M6014-12](#) [XKNANO-1412](#) [SMN-304-ARP6](#) [MIS11-S1F1-2000-A](#) [SMN-308-ARSP7](#) [SMN-308-ACSP7](#) [K-DYX-008](#) [K-DYX-004](#) [HYCW126-TF18-150B](#) [C7024-03](#) [SMO-1030](#) [MCS-110-KT](#) [SIM-217](#) [SNO-1355-KT](#) [SMO-1025-P10](#)