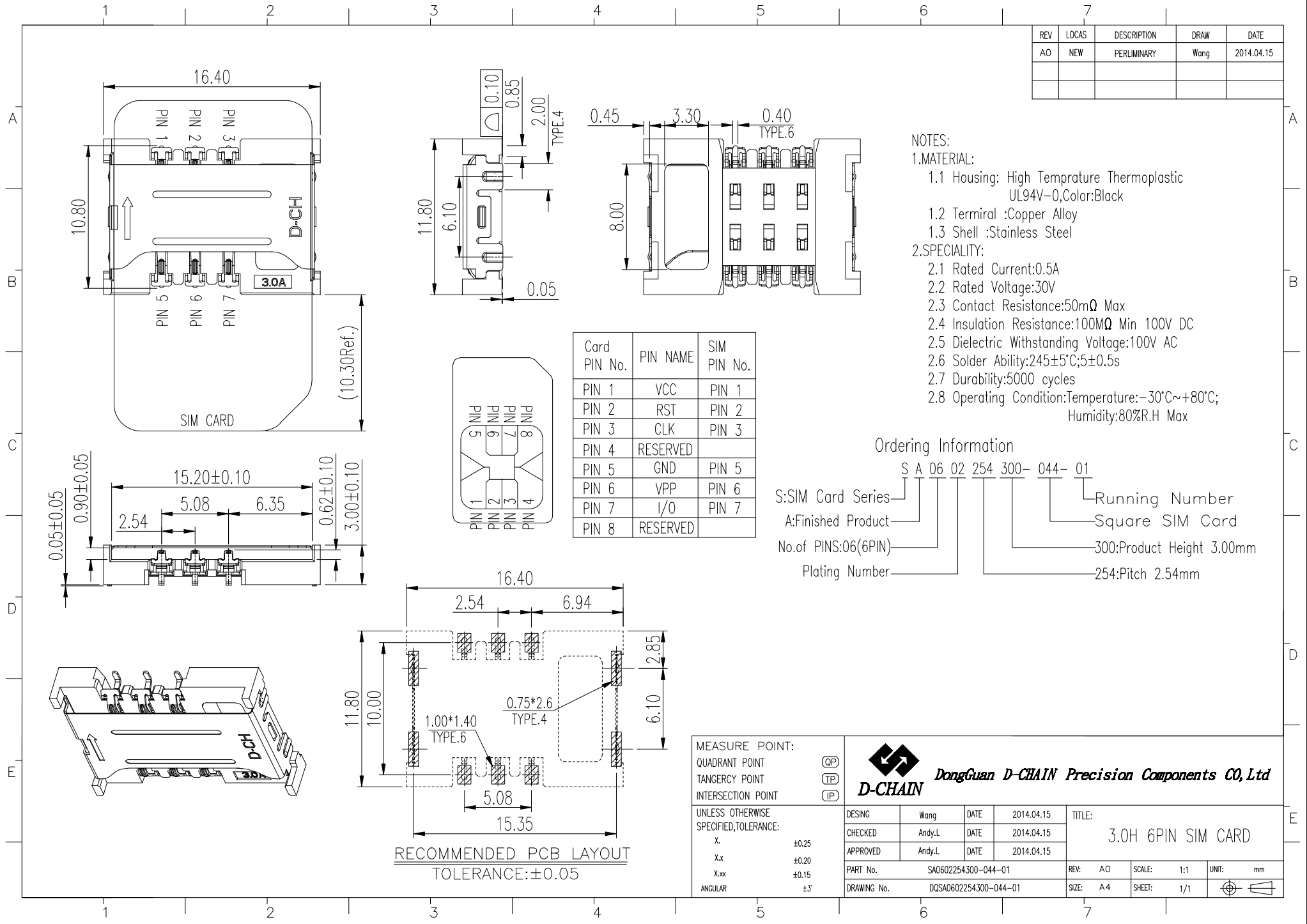


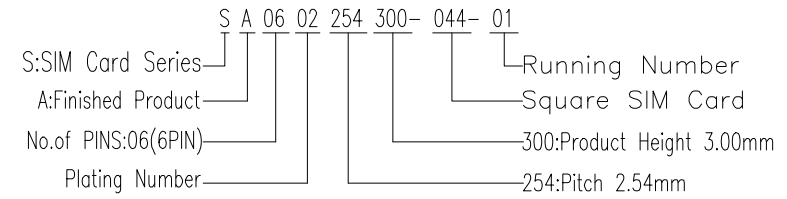
REV	LOCAS	DESCRIPTION	DRAW	DATE
AO	NEW	PERLIMINARY	Wang	2014.04.15



Card PIN No.	PIN NAME	SIM PIN No.
PIN 1	VCC	PIN 1
PIN 2	RST	PIN 2
PIN 3	CLK	PIN 3
PIN 4	RESERVED	
PIN 5	GND	PIN 5
PIN 6	VPP	PIN 6
PIN 7	I/O	PIN 7
PIN 8	RESERVED	

- NOTES:
- MATERIAL:
 - Housing: High Temperature Thermoplastic UL94V-0, Color: Black
 - Terminal: Copper Alloy
 - Shell: Stainless Steel
 - SPECIALITY:
 - Rated Current: 0.5A
 - Rated Voltage: 30V
 - Contact Resistance: 50mΩ Max
 - Insulation Resistance: 100MΩ Min 100V DC
 - Dielectric Withstanding Voltage: 100V AC
 - Solder Ability: 245±5°C; 5±0.5s
 - Durability: 5000 cycles
 - Operating Condition: Temperature: -30°C~+80°C; Humidity: 80%RH Max

Ordering Information



MEASURE POINT: QUADRANT POINT (QP) TANGENCY POINT (TP) INTERSECTION POINT (IP)	DongGuan D-CHAIN Precision Components CO, Ltd		DESIGN	Wang	DATE	2014.04.15	TITLE:	3.0H 6PIN SIM CARD			
UNLESS OTHERWISE SPECIFIED, TOLERANCE: X ±0.25 X.x ±0.20 X.xx ±0.15 ANGULAR ±3'			CHECKED	Andy.L	DATE	2014.04.15	APPROVED	Andy.L	DATE	2014.04.15	
PART No.			SA0602254300-044-01			REV:	A0	SCALE:	1:1	UNIT:	mm
DRAWING No.			DQSA0602254300-044-01			SIZE:	A4	SHEET:	1/1		

X-ON Electronics

Largest Supplier of Electrical and Electronic Components

Click to view similar products for [Memory Card Connectors](#) category:

Click to view products by [D-CHAIN](#) manufacturer:

Other Similar products are found below :

[6407-249V-25273P](#) [6407-249V-25343P](#) [6426-201-21343](#) [69.920.0553.0](#) [MCR60A-98D-2.54DSA\(70\)](#) [809180410000000](#) [DM3AT-SF-PEJM5\(41\)](#) [IC11S-BUR-PNEJL\(71\)](#) [C70210M0083692](#) [252-0144-000](#) [2041353-2](#) [308-DS1P0811-192](#) [HM2P09PDR360N9LF](#) [10014744-011TLF](#) [11327-001](#) [11327-002](#) [NX1-32T-KT3K\(05\)](#) [95622-003LF](#) [84648-056HLF](#) [CCM03-3109 B LFT](#) [MS3116J10-6PW](#) [2309923-1](#) [61126-050CAHLF](#) [GTFP08432B1HR](#) [G85D1160022HHR](#) [SCE2MSDB76A121SN](#) [SCE2MSDZN76A121SN](#) [10014744-011ALF](#) [10014744-011LF](#) [10057542-1211FLF](#) [10067972-000LF](#) [10067972-050LF](#) [10122302-20110LF](#) [G85D1162022HHR](#) [TF-05A](#) [M6014-12](#) [XKNANO-1412](#) [SMN-304-ARP6](#) [MIS11-S1F1-2000-A](#) [SMN-308-ARSP7](#) [SMN-308-ACSP7](#) [K-DYX-008](#) [K-DYX-004](#) [HYCW126-TF18-150B](#) [C7024-03](#) [SMO-1030](#) [MCS-110-KT](#) [SIM-217](#) [SNO-1355-KT](#) [SMO-1025-P10](#)