

REV	LOCALS	DESCRIPTION	DRWN	DATE
01	NEW	PERLUMINARY	LITAO	2016.12.19

NOTES:

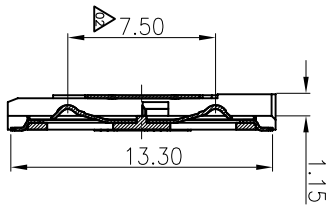
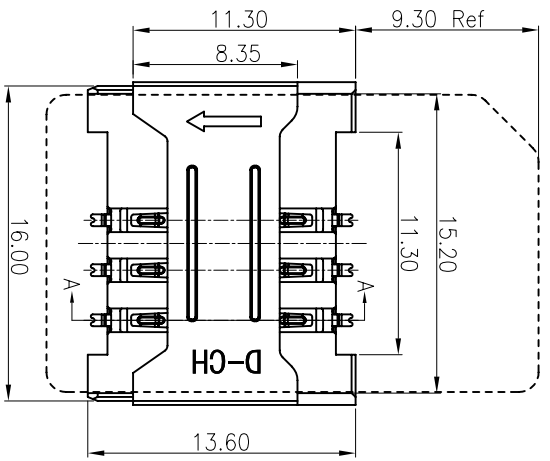
1. MATERIAL:

- 1.1 Housing: High Temperature Thermoplastic
- UL94V-0, Color: Black

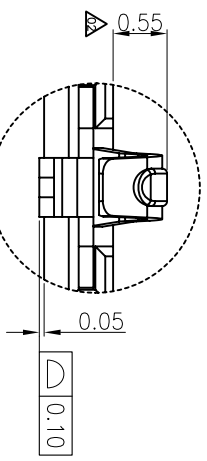
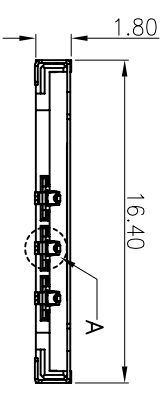
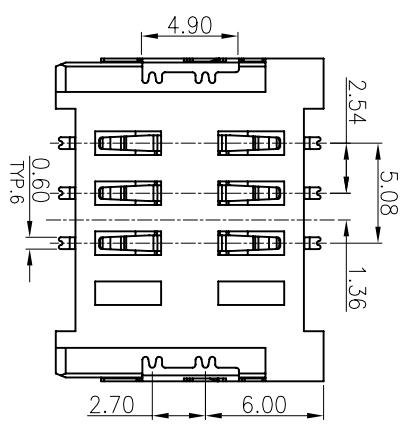
- 1.2 Terminal: Copper Alloy
- 1.3 Shell: stainless steel

2. SPECIALITY:

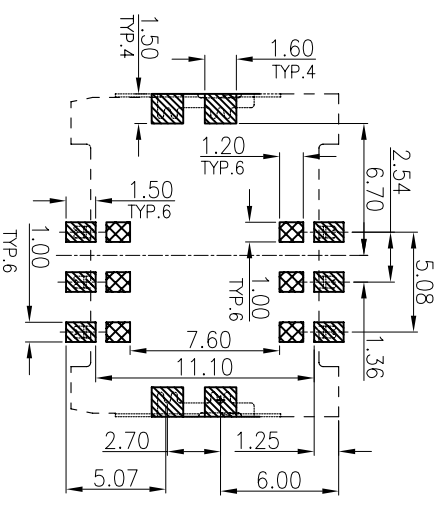
- 2.1 Rated Current: 0.5A
- 2.2 Rated Voltage: 30V
- 2.3 Contact Resistance: 50mΩ Max
- 2.4 Insulation Resistance: 100MΩ Min 100V DC
- 2.5 Dielectric Withstanding Voltage: 100V AC
- 2.6 Solder Ability: 235±5°C; 5±0.5s
- 2.7 Durability: 5000 cycles
- 2.8 Operating Condition: Temperature: -30°C~+80°C;  
Humidity: 80%R.H Max



SECTION:A-A  
SCALE: 1:1

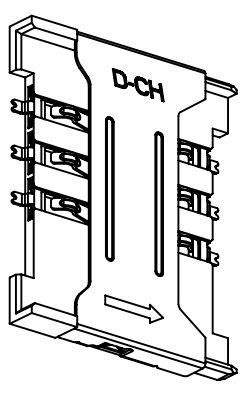


DETAIL "A"  
SCALE 5:1



RECOMMEND P.C.B. LAYOUT  
TOLERANCE ±0.05

THESE AREA SHOULD BE FREE OF ANY CONDUCTIVE TRACES  
SMT SOLDER AREA



MEASURE POINT:	(QP)
QUADRANT POINT	(TP)
TANGENCY POINT	(TP)
INTERSECTION POINT	(IP)
UNLESS OTHERWISE SPECIFIED, TOLERANCE:	
X	±0.20
X.X	±0.15
X.XX	±0.10
X.XXX	±0.05
ANGULAR	±2'

		DESIGN	Wong	DATE	2016.12.19	TITLE:	1. 8H 6P1N SIM CARD
		CHECKED		DATE			
		APPROVED		DATE			
		PART NO:	SA0607254180-09-03	REV:	01	SCALE:	1:1
DRAWING NO:		DOS0607254180-09-03		SIZE:	A4	SHEET:	1/1

## X-ON Electronics

Largest Supplier of Electrical and Electronic Components

*Click to view similar products for [Memory Card Connectors](#) category:*

*Click to view products by [D-CHAIN](#) manufacturer:*

Other Similar products are found below :

[6407-249V-25273P](#) [6407-249V-25343P](#) [6426-201-21343](#) [69.920.0553.0](#) [MCR60A-98D-2.54DSA\(70\)](#) [809180410000000](#) [DM3AT-SF-PEJM5\(41\)](#) [IC11S-BUR-PNEJL\(71\)](#) [C70210M0083692](#) [252-0144-000](#) [2041353-2](#) [308-DS1P0811-192](#) [HM2P09PDR360N9LF](#) [10014744-011TLF](#) [11327-001](#) [11327-002](#) [NX1-32T-KT3K\(05\)](#) [95622-003LF](#) [84648-056HLF](#) [CCM03-3109 B LFT](#) [MS3116J10-6PW](#) [2309923-1](#) [61126-050CAHLF](#) [GTFP08432B1HR](#) [G85D1160022HHR](#) [SCE2MSDB76A121SN](#) [SCE2MSDZN76A121SN](#) [10014744-011ALF](#) [10014744-011LF](#) [10057542-1211FLF](#) [10067972-000LF](#) [10067972-050LF](#) [10122302-20110LF](#) [G85D1162022HHR](#) [TF-05A](#) [M6014-12](#) [XKNANO-1412](#) [SMN-304-ARP6](#) [MIS11-S1F1-2000-A](#) [SMN-308-ARSP7](#) [SMN-308-ACSP7](#) [K-DYX-008](#) [K-DYX-004](#) [HYCW126-TF18-150B](#) [C7024-03](#) [SMO-1030](#) [MCS-110-KT](#) [SIM-217](#) [SNO-1355-KT](#) [SMO-1025-P10](#)