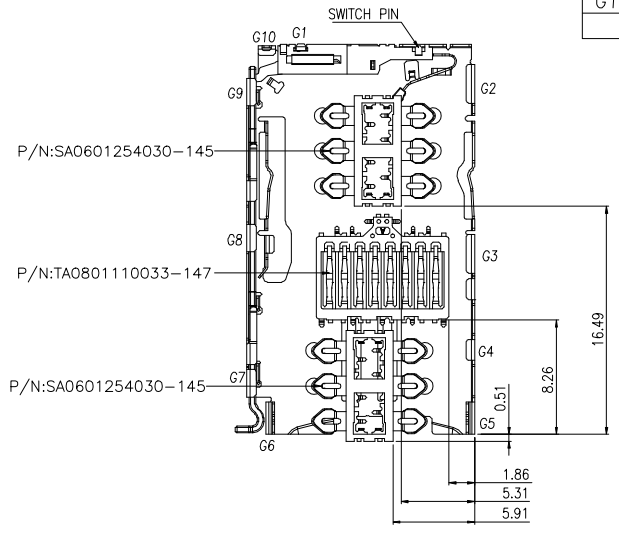
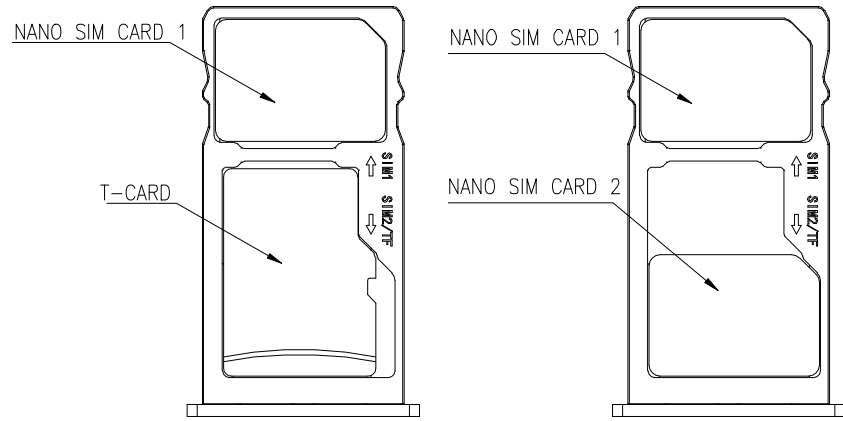
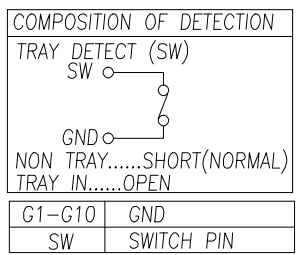


REV	LOCAS	DESCRIPTION	DRAW	DATE
01	NEW	INITIAL RELEASE	LIU	2019.09.24
02		UPDATED	Andy	2020.11.30
03		UPDATED	LIU	2021.06.29
04		UPDATED	LIU	2021.07.30
05			LIU	2021.09.02

- NOTES:
- MATERIAL:
 - HOUSING:THERMOPLASTIC,UL 94V-0;COLOR:BLACK
 - CONTACT:COPPER ALLOY
 - CRANK:STAINLESS STEEL T=0.4mm
 - ROD:STAINLESS STEEL T=0.5mm
 - SHELL:STAINLESS STEEL T=0.15mm
 - SWITCH BLOCK:THERMOPLASTIC,UL 94V-0; 30% G/F FILLED;COLOR:BLACK
 - SWITCH PIN:STAINLESS STEEL T=0.15mm
 - FINISH:
 - CONTACT: GOLD PLATING ON CONTACT AREA(SEE P/N) 1u" Au PLATING ON SOLDER TAILS 50u" MIN. NICKEL UNDERPLATING OVER ALL
 - SHELL: 1u" MIN GOLD PLATING ON SOLDER TAILS, 50u" NICKEL UNDERPLATED.
 - SPECIALITY:
 - VOLTAGE RATING:50V
 - WITHSTANDING VOLTAGE:AC250V R.M.S
 - CURRENT RATING:1.0A
 - INSULATION RESISTANCE:1000MEG.OHM MIN AT DC 250V
 - CONTACT RESISTANCE:100 MILL.OHM MAX
 - OPERATION TEMPERATURE: -20°C~+85°C
 - DURABILITY:1000 CYCLES

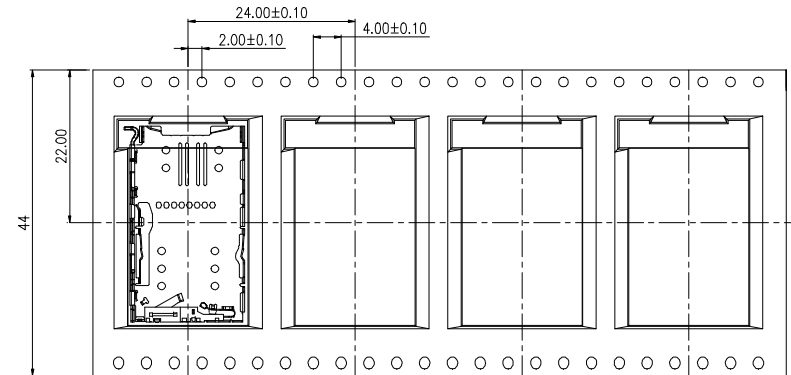


MEASURE POINT: QUADRANT POINT (QP) TANGENCY POINT (TP) INTERSECTION POINT (IP)	DESIGN	LIU	DATE	2019.09.24	TITLE: 1.35H 右侧顶出分体式 三选二 组合式卡座(外壳组件)
	CHECKED		DATE		
UNLESS OTHERWISE SPECIFIED,TOLERANCE: X ±0.25 X.x ±0.20 X.xx ±0.15 ANGULAR ±3'	APPROVED		DATE		REV: 04
	PART NO:	SA3201254135-152			SCALE: 1:1
	DRAWING NO:				UNIT: mm
					SIZE: A4
					SHEET: 1/5

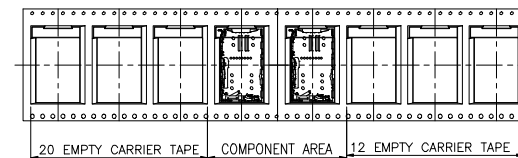
D-CHAIN DongGuan D-CHAIN Precision Components CO, Ltd

REV	LOCAS	DESCRIPTION	DRAW	DATE
01	NEW	INITIAL RELEASE	LIU	2019.09.24
02		UPDATED	Andy	2020.11.30
03		UPDATED	LIU	2021.06.29
04		UPDATED	LIU	2021.07.30
05			LIU	2021.09.02

PACKAGING DRAWING

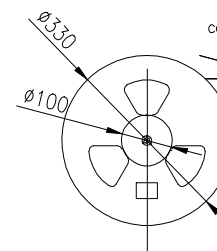


USER DIRECTION OF UNREELING

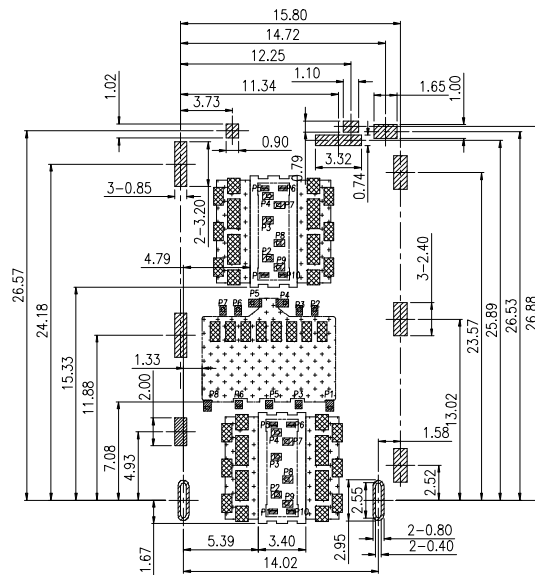


PACKAGING DIRECTION ← USER DIRECTION →

COVER TAPE PEELING ANGLE:165°~180°
PEELING FORCE:20~130g CARRIER TAPE



PACKAGE:
Q'TY:800PCS/REEL

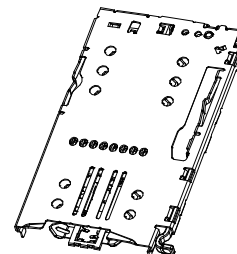


- SMT SOLDER AREA
 - OPEN WIRE RESTRICTED AREA
 - OPEN WIRE & COPPER RESTRICTED AREA
- 1.TOUCH AREA OF CONTACT TIPS,NO ELECTRICAL FUNCTION
2.NO FIRST PCB-LAYER CIRCUITS IN THE AREA

RECOMMENDED PCB LAYOUT
GENERAL TOLERANCE ±0.05

Pin No.	NAME	TYPE	DESCRIPTION
1	DAT 2	I/O/PP	Date Line(bit2)
2	CD/DAT 3	I/O/PP	Card Detect/Date Line(bit3)
3	CMD	PP	Command Response
4	VDD	S	Supply Voltage
5	CLK	I	Colck
6	VSS	S	Supply Voltage Ground
7	DAT0	I/O/PP	Date Line(bit0)
8	DAT1	I/O/PP	Date Line(bit1)

SIM Card terminal NO	Pin NO
P1 P2	C1 vcc:pwr signal and GND
P3	C2 RST: Reset signal
P4 P5	C3 CLK:Clcking signal
P9 P10	C5 GND:PWR signal and GND
P8	C6 vpp:programming voltage
P6 P7	C7 I/O:seral date input/output



MEASURE POINT: QUADRANT POINT TANGENCY POINT INTERSECTION POINT	<input type="checkbox"/> QP <input type="checkbox"/> TP <input type="checkbox"/> IP	<p>D-CHAIN</p>	DESIGN	LIU	DATE	2019.09.24	TITLE:	1.35H 右侧顶出分体式 三选二 组合式卡座(外壳组件)	
UNLESS OTHERWISE SPECIFIED,TOLERANCE:	X ±0.25 X.x ±0.20 X.xx ±0.15 ANGULAR ±3°		CHECKED		DATE		REV: 05		SCALE: 1:1
		APPROVED		DATE		PART NO: SA3201254135-152	SIZE: A4	SHEET: 2/5	
		DRAWING NO:							

X-ON Electronics

Largest Supplier of Electrical and Electronic Components

Click to view similar products for [Memory Card Connectors](#) category:

Click to view products by [D-CHAIN](#) manufacturer:

Other Similar products are found below :

[6407-249V-25273P](#) [6407-249V-25343P](#) [6426-201-21343](#) [69.920.0553.0](#) [MCR60A-98D-2.54DSA\(70\)](#) [809180410000000](#) [DM3AT-SF-PEJM5\(41\)](#) [IC11S-BUR-PNEJL\(71\)](#) [C70210M0083692](#) [252-0144-000](#) [2041353-2](#) [308-DS1P0811-192](#) [HM2P09PDR360N9LF](#) [10014744-011TLF](#) [11327-001](#) [11327-002](#) [NX1-32T-KT3K\(05\)](#) [95622-003LF](#) [84648-056HLF](#) [CCM03-3109 B LFT](#) [MS3116J10-6PW](#) [2309923-1](#) [61126-050CAHLF](#) [GTFP08432B1HR](#) [G85D1160022HHR](#) [SCE2MSDB76A121SN](#) [SCE2MSDZN76A121SN](#) [10014744-011ALF](#) [10014744-011LF](#) [10057542-1211FLF](#) [10067972-000LF](#) [10067972-050LF](#) [10122302-20110LF](#) [G85D1162022HHR](#) [TF-05A](#) [M6014-12](#) [XKNANO-1412](#) [SMN-304-ARP6](#) [MIS11-S1F1-2000-A](#) [SMN-308-ARSP7](#) [SMN-308-ACSP7](#) [K-DYX-008](#) [K-DYX-004](#) [HYCW126-TF18-150B](#) [C7024-03](#) [SMO-1030](#) [MCS-110-KT](#) [SIM-217](#) [SNO-1355-KT](#) [SMO-1025-P10](#)