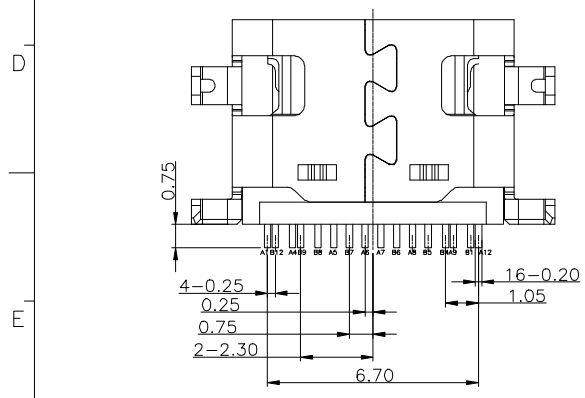
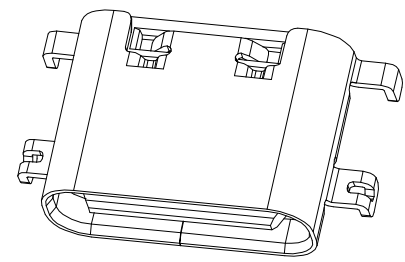
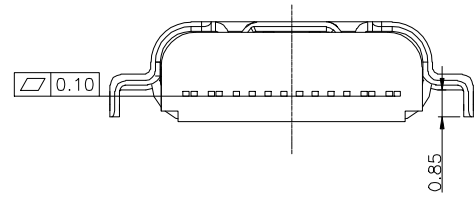
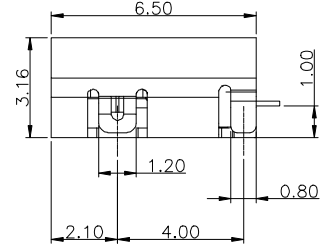
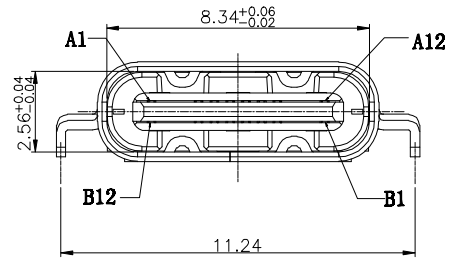
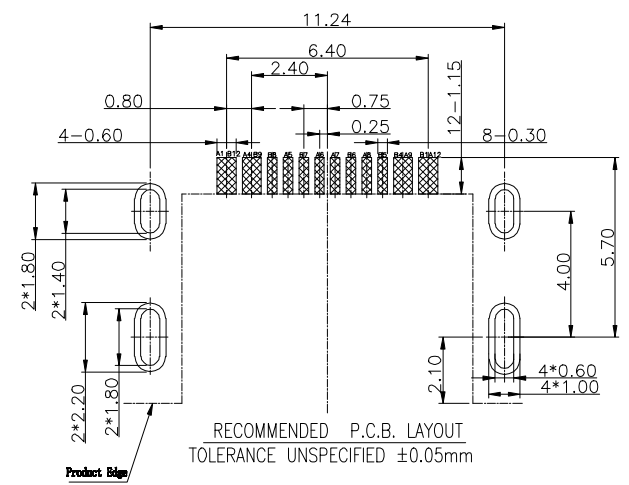
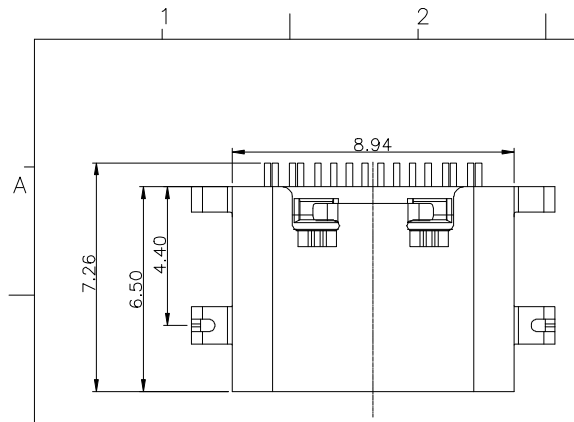


REV	LOCAS	DESCRIPTION	DRAW	DATE
01	NEW	PERLIMINARY	LIU	2019.12.12
02		UPDATED	LIU	2021.12.03

- SPECIFICATION:
- 1.CURRENT RATING: 5.0A MAX
 - 2.VOLTAGE RATING:30 VAC
 - 3.WITHSTANDING VOLTAGE:100 VAC
 - 4.TEMPERATURE RANGE: -30°C ~ 85°C
 - 5.CONTACT RESISTANCE: 40mΩMAX
 - 6.INSULATION RESISTANCE: 100MΩ MIN.
 - 7.LNSERTION FORCE : 5N~20N
 - 8.UNMATING FORCE: 8N~20N
 - 9.DURABILITY: 10,000 CYCLES



NO.	DESCRIPTION	MATERIAL	REMARKS	QTY
5	SHELL	STAINLESS STEEL	NI Plated	1PCS
4	SHIELDING PLATE	STAINLESS STEEL	---	1PCS
3	CONTACT	COPPER ALLOY	Au/Ni Plated	1SET
2	CONTACT	COPPER ALLOY	Au/Ni Plated	1SET
1	HOUSING	HIGH TEMPERATURE PLASTIC	BLACK	1PCS

A1	GND	B12	GND
A4	VBUS	B9	VBUS
A5	CC1	B8	SBU2
A6	DP1	B7	DN2
A7	DN1	B6	DP2
A8	SBU1	B5	CC2
A9	VBUS	B4	VBUS
A12	GND	B1	GND
PIN	SIGNAL NAME	PIN	SIGNAL NAME

MEASURE POINT:
 QUADRANT POINT (QP)
 TANGENCY POINT (TP)
 INTERSECTION POINT (IP)
 UNLESS OTHERWISE SPECIFIED, TOLERANCE:
 X: ±0.25
 X.x ±0.20
 X.xx ±0.15
 ANGULAR ±3'

DongGuan D-CHAIN Precision Components CO, Ltd
D-CHAIN

DESIGN	LIU	DATE	2019.12.12	TITLE:	USB CF 16PIN 沉板1.0(L=6.5)
CHECKED		DATE			
APPROVED		DATE			
PART NO:	UA1601050316-171			REV:	02
DRAWING NO:		SCALE:	1:1	UNIT:	mm
		SIZE:	A4	SHEET:	1/2

X-ON Electronics

Largest Supplier of Electrical and Electronic Components

Click to view similar products for [USB Connectors](#) category:

Click to view products by [D-CHAIN](#) manufacturer:

Other Similar products are found below :

[950](#) [A-USB A-LP-SMT-C](#) [A-USB B-TOP-C](#) [MUSBD11135](#) [17-200721](#) [217450-1](#) [KMBVX-TH-5S-B30](#) [KUSBX-AS2N-W](#) [KUSBX-SMT2AP1S-W30](#) [935](#) [957](#) [30-498-6](#) [SK-60A-2](#) [1734082-1](#) [30-470](#) [30-489](#) [30-541](#) [MIKROE-1451](#) [USBFTVSCCG](#) [1-1734084-2](#) [10135326-001LF](#) [4198](#) [USB-A-D-VT](#) [USB-A-S-RA-TSMT](#) [1310-1023-02](#) [690-024-633-031](#) [UB-20PMFP-LC7001](#) [17-200011](#) [UB-20AFMM-LL7A01](#) [1040870124](#) [CAP-WCCMLPB1](#) [2274475-3](#) [UB-20BMFA-SL8001](#) [914-614A2025S10200](#) [ZX40-B-5S-1500-STDA\(30\)](#) [GSB3116344HR](#) [USB3FTV2SAZNF459](#) [U221-041N-1WVS62-F5D](#) [HYCW153-USBD05-500B](#) [HYCW219-USBD05-075B](#) [HYCW148-USBD05-117B](#) [HYCW149-USBD05-740B](#) [HYCW204-USBD05-108B](#) [HYCW214-USBA04-113B](#) [HYCW213-USBA04-113B](#) [UB-20AMFM-SL7A01](#) [KMMX-BSMT35S-1-B30TR](#) [2345986-1](#) [10082141-N340LF](#) [10117836-011LF](#)