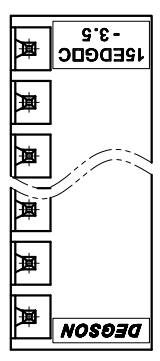
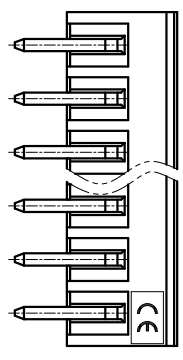
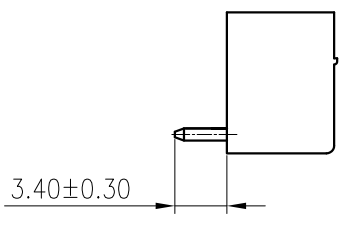
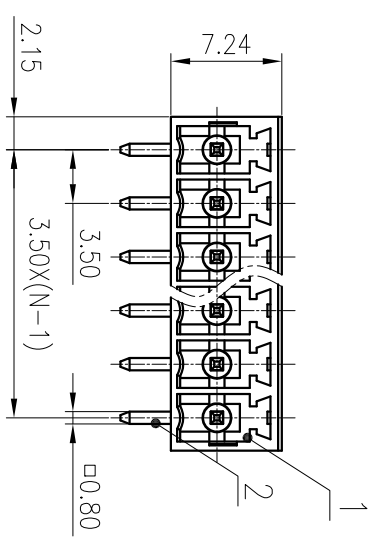
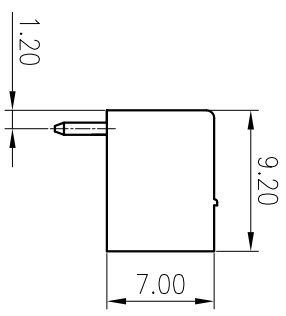
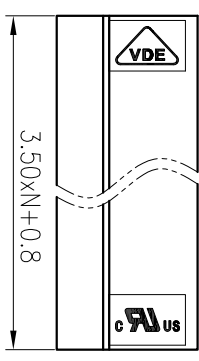
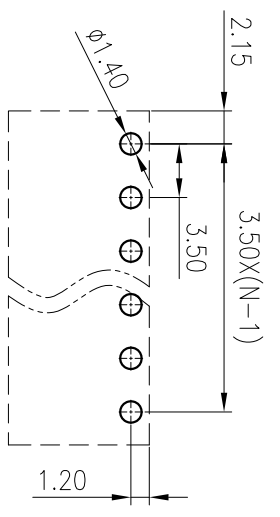


| 公差 (mm) | General Tolerances (mm) |
|---------|-------------------------|
| 0       | >3                      |
| ~       | >6                      |
| ~       | >10                     |
| ~       | >18                     |
| ~       | >30                     |
| ~       | >50                     |
| ~       | >80                     |
| ~       | >120                    |
| ~       | >180                    |
| ~       | >250                    |
| ~       | >315                    |
| ~       | >400                    |
| ~       | >500                    |
| ±0.12   | ±0.18                   |
| ±0.22   | ±0.26                   |
| ±0.31   | ±0.37                   |
| ±0.57   | ±0.80                   |
| ±0.93   | ±1.05                   |
| ±1.15   | ±1.60                   |
| ±2.20   | ±2.50                   |
| ±2      | ±2.50                   |
| ±2      | ±2.50                   |

文管中心  
 研发专用  
 2020.03.19  
 (仅限内部使用, 对外无效)



PCB LAYOUT



| ITEM | NAME OF PART | MATERIAL     | NOTES     |
|------|--------------|--------------|-----------|
| 2    | Pin          | Copper Alloy | Sn Plated |
| 1    | Housing      | PA66         | UL94V-0   |

|   |               |   |       |
|---|---------------|---|-------|
| UL 标准/UL Standard:                              | B             | C | D     |
| 额定电压/电流/Rated Voltage(V)/Current(A)             | 300/8         | / | 300/8 |
| IEC 标准/IEC Standard:                            |               |   |       |
| 过压类别/Overvoltage Category/污染等级/Pollution Degree | II/2          |   |       |
| 额定电压/电流/Rated Voltage(V)/Current(A)             | 250/7         |   |       |
| 额定脉冲电压(KV)/Rate Impulse Voltage(KV)             | 2.5           |   |       |
| 间距/Pitch(mm)/线数范围/Poles                         | 3.50/N=02~24P |   |       |
| 使用温度范围/Operating temperature(°C)                | -40~+105      |   |       |
| 符合RoHS环保要求/Conform to RoHS                      | Yes           |   |       |

|               |            |              |                           |
|---------------|------------|--------------|---------------------------|
| MATERIAL:     | SURFACE: / |              |                           |
| MAT NO.:      | /          |              |                           |
| STATUS:       | /          |              |                           |
| APPD: Lan CHH | 2020.03.19 | NAME:        | 15EDGRC-3.5-XXP-1Y-00A(H) |
| CHKD: Yu JZh  | 2020.03.19 | DRAWING NO.: | 15EDGRC-3.5-C02           |
| DRFT: Yz      | 2015.10.12 | TYPE:        | CUSTOMER DRAWING          |
| SIZE: A4      | (mm)       | SCALE:       | 2:1                       |
| REV           | T1         | SHEET        | 1/1                       |

| REV | ECN | DESCRIPTION    | DRFT | DATE       |
|-----|-----|----------------|------|------------|
| (1) |     | Drawing Update | GenK | 2020.03.19 |

|            |                                   |
|------------|-----------------------------------|
| 宁波高松电子有限公司 | NINGBO DEGSON ELECTRICAL CO., LTD |
|------------|-----------------------------------|

## X-ON Electronics

Largest Supplier of Electrical and Electronic Components

*Click to view similar products for [Pluggable Terminal Blocks](#) category:*

*Click to view products by [Degson](#) manufacturer:*

Other Similar products are found below :

[57.510.0053](#) [721-104/026-047](#) [721-204/026-045](#) [MC 1.5/ 6-ST-3.5 GY AU](#) [ET02015000J0G](#) [860505](#) [860516](#) [860810](#) [GBPACX-12](#)  
[93.731.4953.0](#) [PVP03-3,50](#) [PVS02-5,00](#) [1-1986160-3](#) [1377680000](#) [1531000000](#) [1546228-5](#) [ELFP03110](#) [ELFP10210](#) [ELFT07250](#)  
[ELVD12100](#) [ELVF09400](#) [ELXH071G0E](#) [1725220000](#) [1760336](#) [1855000000](#) [19346](#) [1946309](#) [1973592](#) [19892](#) [25.320.4053.1](#) [25.320.4553.9](#)  
[25.320.4753.1](#) [25.320.5453.1](#) [25.340.0353.1](#) [25.340.1053.1](#) [25.345.3553.0M001](#) [25.640.3553.1](#) [SH02-5,08](#) [SH06-3,81](#) [SH08-5,08](#) [SH08-](#)  
[5,08-K](#) [SH12-5,08](#) [SHS04-5,00](#) [30.303](#) [30.305](#) [30.306](#) [PHP09-5,08](#) [25.193.0453.0](#) [25.320.4653.1](#) [25.332.2453.1](#)