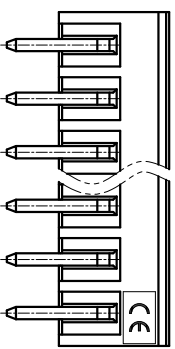
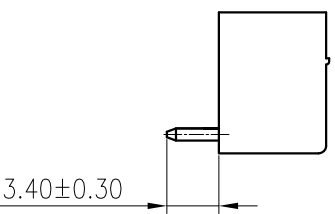
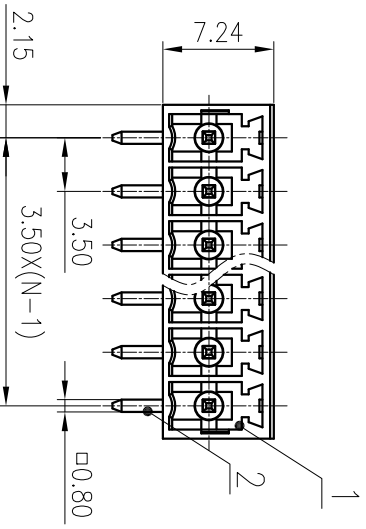
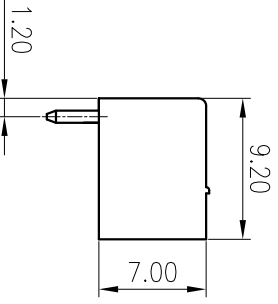
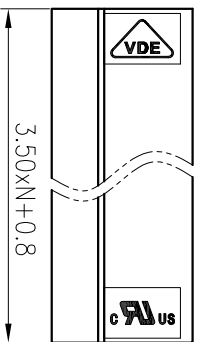
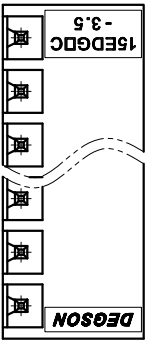
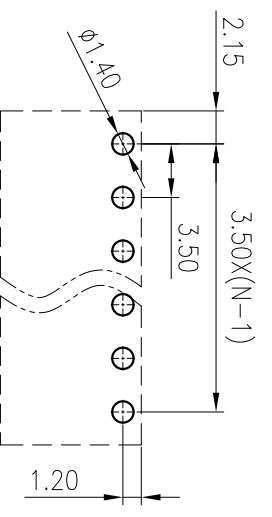


公差 (mm)		General tolerances(mm)	
0	>3	>6	>10
~	3	~	~
~	6	~	~
~	10	~	~
~	18	~	~
~	30	~	~
~	50	~	~
~	80	~	~
~	120	~	~
~	180	~	~
~	250	~	~
~	315	~	~
~	400	~	~
~	500	~	~
~	>500	~	~
±	0.1/10	±	±2.50
±	±2	±	±2.50

文 管 中 心  
 研 发 专 用  
**2020.03.19**  
 (仅限内部使用, 对外无效)



PCB LAYOUT



2	Pin	Copper Alloy	Sn Plated
1	Housing	PA66	UL94V-0
ITEM	NAME OF PART	MATERIAL	NOTES
UL 标准/UL Standard: B C D			
额定电压/电流/Rated Voltage(V)/Current(A) 300/8 / 300/8			
IEC 标准/IEC Standard: /			
过压类别/Overvoltage Category/污染等级/Pollution Degree II/2			
额定电压/电流/Rated Voltage(V)/Current(A) 250/7			
额定脉冲电压(KV)/Rate Impulse Voltage(KV) 2.5			
间距/Pitch(mm)/线数范围/Poles 3.50/N=02~24P			
使用温度范围/Operating temperature(°C) -40~+105			
符合RoHS环保要求/Conform to RoHS Yes			

MATERIAL: / SURFACE: /

MAT NO.:	/
STATUS:	/
APPD: Lan CHH	2020.03.19
CHKD: Yu JZh	2020.03.19
DRFT: Yz	2015.10.12

**DEGSON** 宁波高松电子有限公司  
 NINGBO DEGSON ELECTRICAL CO., LTD  
 NAME: 15EDGRC-3.5-XXP-1Y-00A(H)  
 DRAWING NO.: 15EDGRC-3.5-C02  
 TYPE: CUSTOMER DRAWING  
 SCALE: 2:1  
 SHEET: 1/1

REV	(1)	ECN	DESCRIPTION	DRFT	DATE
			Drawing Update	GenK	2020.03.19

## X-ON Electronics

Largest Supplier of Electrical and Electronic Components

*Click to view similar products for [Pluggable Terminal Blocks](#) category:*

*Click to view products by [Degson](#) manufacturer:*

Other Similar products are found below :

[57.510.0053](#) [721-104/026-047](#) [721-204/026-045](#) [MC 1.5/ 6-ST-3.5 GY AU](#) [ET02015000J0G](#) [860505](#) [860516](#) [860810](#) [GBPACX-12](#)  
[93.731.4953.0](#) [PVP03-3,50](#) [PVS02-5,00](#) [1-1986160-3](#) [1377680000](#) [1531000000](#) [1546228-5](#) [ELFP03110](#) [ELFP10210](#) [ELFT07250](#)  
[ELVD12100](#) [ELVF09400](#) [ELXH071G0E](#) [1725220000](#) [1760336](#) [1855000000](#) [19346](#) [1946309](#) [1973592](#) [19892](#) [25.320.4053.1](#) [25.320.4553.9](#)  
[25.320.4753.1](#) [25.320.5453.1](#) [25.340.0353.1](#) [25.340.1053.1](#) [25.345.3553.0M001](#) [25.640.3553.1](#) [SH02-5,08](#) [SH06-3,81](#) [SH08-5,08](#) [SH08-](#)  
[5,08-K](#) [SH12-5,08](#) [SHS04-5,00](#) [30.303](#) [30.305](#) [30.306](#) [PHP09-5,08](#) [25.193.0453.0](#) [25.320.4653.1](#) [25.332.2453.1](#)