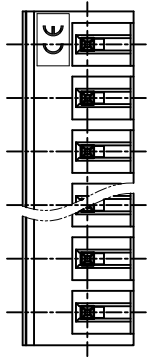
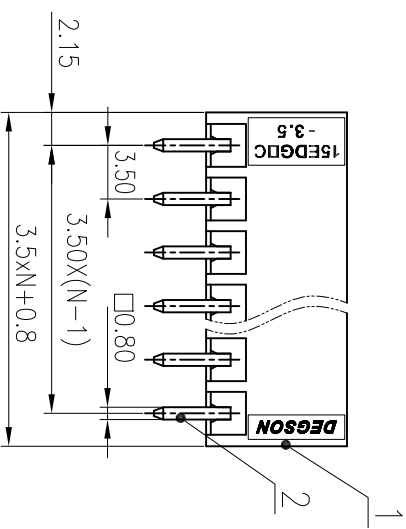
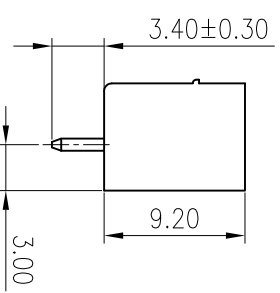
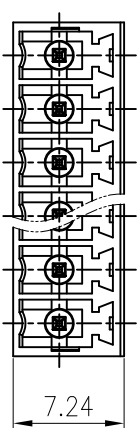
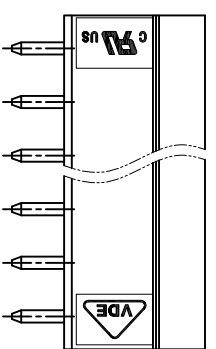
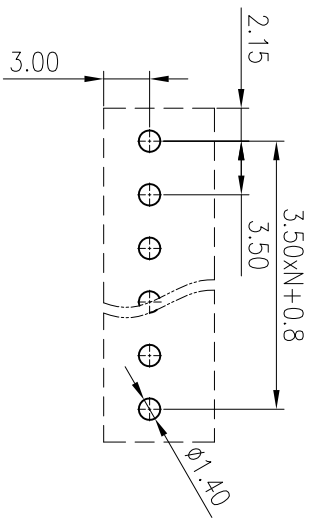


公差/General Tolerances(mm)		公差/General Tolerances(mm)										0.1/1.0	
0	>3	>5	>10	>18	>30	>50	>80	>120	>180	>250	>315	>400	±Z
~	3	~	6	~	10	~	18	~	30	~	50	~	
E0.12	E0.18	E0.22	E0.26	E0.31	E0.37	E0.57	E0.80	E0.93	E1.05	E1.15	E1.60	E2.20	E2.50



PCB LAYOUT



管 中 心
发 专 用
2020.05.21
(仅限内部使用, 对外无效)

2	Pin	Copper Alloy	Sn Plated
1	Housing	PA66	UL94V-0
ITEM	NAME OF PART	MATERIAL	NOTES
UL 标准/UL Standard: B C D			
额定电压/电流/Rated Voltage(V)/Current(A) 300/8 / 300/8			
IEC 标准/IEC Standard: /			
过压类别/Overvoltage Category/污染等级/Pollution Degree II/2			
额定电压/电流/Rated Voltage(V)/Current(A) 250/7			
额定脉冲电压(KV)/Rate Impulse Voltage(KV) 2.5			
间距/Pitch(mm)/线数范围/Poles 3.5/N=02~24P			
使用温度范围/Operating temperature(C) -40~+105			
符合RoHS环保要求/Conform to RoHS Yes			

MATERIAL: /		SURFACE: /	
MAT NO.:	/		
STATUS:	/		
APPR: LanCH	2020.05.21	NAME:	
CHKD: YujZ	2020.05.21	DRAWING NO.: 15EDGVC-3.5-C02	
DRFT: YZ	2015.10.12	TYPE: CUSTOMER DRAWING	SCALE: 2:1
REV	ECN	DESCRIPTION	DATE
(T1)		Drawing Update	2020.05.21

宁波高松电子有限公司
NINGBO DEGSON ELECTRICAL CO., LTD

15EDGVC-3.5-XXP-1Y-00A(H)

REV	ECN	DESCRIPTION	DATE
(T1)		Drawing Update	2020.05.21

X-ON Electronics

Largest Supplier of Electrical and Electronic Components

Click to view similar products for [Pluggable Terminal Blocks](#) category:

Click to view products by [Degson](#) manufacturer:

Other Similar products are found below :

[57.510.0053](#) [721-104/026-047](#) [721-204/026-045](#) [MC 1.5/ 6-ST-3.5 GY AU](#) [ET02015000J0G](#) [860505](#) [860516](#) [860810](#) [GBPACX-12](#)
[93.731.4953.0](#) [PVP03-3,50](#) [PVS02-5,00](#) [1-1986160-3](#) [1377680000](#) [1531000000](#) [1546228-5](#) [ELFP03110](#) [ELFP10210](#) [ELFT07250](#)
[ELVD12100](#) [ELVF09400](#) [ELXH071G0E](#) [1725220000](#) [1760336](#) [1855000000](#) [19346](#) [1946309](#) [1973592](#) [19892](#) [25.320.4053.1](#) [25.320.4553.9](#)
[25.320.4753.1](#) [25.320.5453.1](#) [25.340.0353.1](#) [25.340.1053.1](#) [25.345.3553.0M001](#) [25.640.3553.1](#) [SH02-5,08](#) [SH06-3,81](#) [SH08-5,08](#) [SH08-](#)
[5,08-K](#) [SH12-5,08](#) [SHS04-5,00](#) [30.303](#) [30.305](#) [30.306](#) [PHP09-5,08](#) [25.193.0453.0](#) [25.320.4653.1](#) [25.332.2453.1](#)