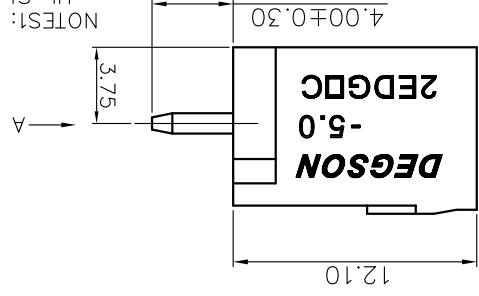


REVISION RECORD				
REV	ECN	DESCRIPTION	DRFT	DATE

ZEDGVC - 5.0/5.08 - XXP - 1Y - 00A (H)
 (RoHS)
 -00A - (Standard)
 (Series No.) (Pitch) (Poles)(Single Pitch) (Color) 1. (Grey)
 2. (Blue)
 3. (Black)
 4. (Green)
 5. (Orange)
 6. (Red)
 7. (Transparent)
 8. (Yellow)
 9. (White)

- 9. (White)
- 8. (Yellow)
- 7. (Transparent)
- 6. (Red)
- 5. (Orange)
- 4. (Green)
- 3. (Black)
- 2. (Blue)



NOTES:
 1. Rated voltage/current : 300V / 15A
 2. Withstanding voltage : AC1600V/1min.
 IEC Standard

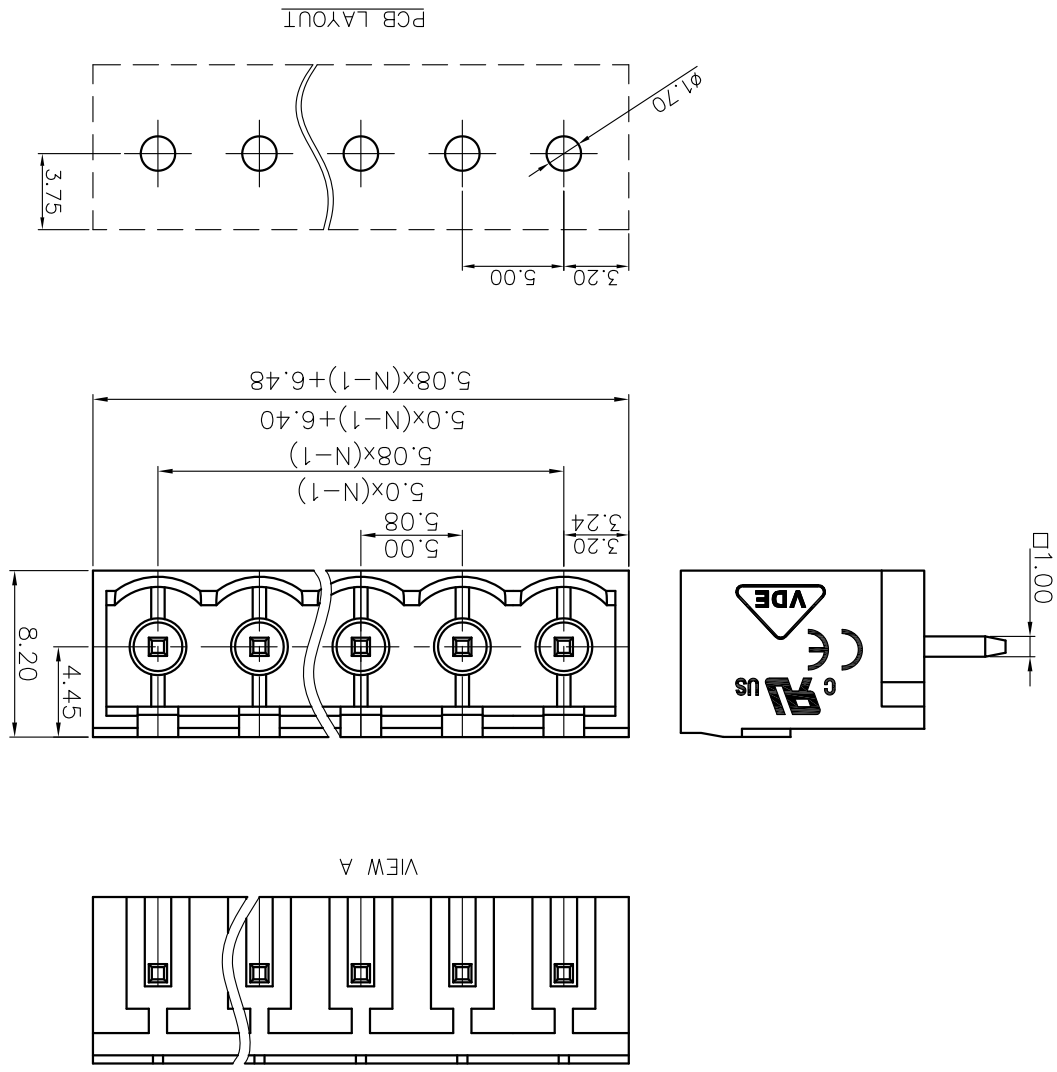
Pollution degree	2
Overvoltage category	III
Rate impulse voltage(KV)	4.0KV
Rate voltage(V)	320V
Rate current(A)	20A

NOTE2:
 1. Dimension shall be interpreted per ASME Y14.5-2009
 2. Pitch : 5.0/5.08mm, Poles : N=02~24P
 3. Operating temperature: -40°C~+105°C
 4. Undimensioned tolerances:
 Pitch range in mm

mm	Over	Over	Over	Over	Over	Over	Over	Over	Over	Over	Over
±2.0	±0.15	±0.20	±0.30	±0.50	±0.70	±1.00	±1.30	±1.50	0.1/10	0.1/10	±2.0
To	6	10	10	10	10	10	10	10	150	150	±2.0
Over	6	10	10	10	10	10	10	10	150	150	±2.0
Over	6	10	10	10	10	10	10	10	150	150	±2.0
Over	6	10	10	10	10	10	10	10	150	150	±2.0
Over	6	10	10	10	10	10	10	10	150	150	±2.0
Over	6	10	10	10	10	10	10	10	150	150	±2.0
Over	6	10	10	10	10	10	10	10	150	150	±2.0

5. RoHS Compliance

PART NO.:	NINGBO DEGSON ELECTRICAL CO., LTD	
	宁波高松电子有限公司	
NAME:	ZEDGVC-5.0/5.08-XXP-1Y-00A(H)	
APPD:	/	/
CHKD:	/	/
DRFT:	/	/
TITLE:	CUSTOMER DRAWING	REV
DRAWING NO.:	/	SHEET
THIRD ANGLE PROJECTION	(INCH)	DO NOT SCALE DRAWING
SCALE	1:1	SCALE



1 2 3 4 5 6 7 8

A B C D E F G H

X-ON Electronics

Largest Supplier of Electrical and Electronic Components

Click to view similar products for [Pluggable Terminal Blocks](#) category:

Click to view products by [Degson](#) manufacturer:

Other Similar products are found below :

[57.404.7553](#) [57.504.0053.7](#) [57.510.0053](#) [57.910.6153](#) [01.112.1453](#) [CTB932VE/6](#) [MC 1.5/ 6-ST-3.5 GY AU](#) [ET02015000J0G](#) [734-104](#) [734-302](#) [734-304](#) [8-141-P](#) [FKCT 2.5/ 3-ST KMGY](#) [860505](#) [860508](#) [860516](#) [860810](#) [861908](#) [GBPACX-12](#) [93.731.4953.0](#) [PV05-5,08-K](#) [PVP02-5,00](#) [PVP04-3,50](#) [PVS02-5,00](#) [1-1986160-3](#) [H-10](#) [1546228-5](#) [ELFH09150](#) [ELFH16150](#) [ELFP03110](#) [ELFT06250](#) [ELFT07250](#) [ELVF09400](#) [ELVP03100](#) [ELXH03100](#) [ELXH071G0E](#) [ELXP041G0](#) [ELXT046G0](#) [1700101](#) [1700410](#) [1700425](#) [1703176](#) [1705229](#) [1710175](#) [1714537](#) [1717806](#) [1719600](#) [1729386](#) [1734692](#) [1734795](#)