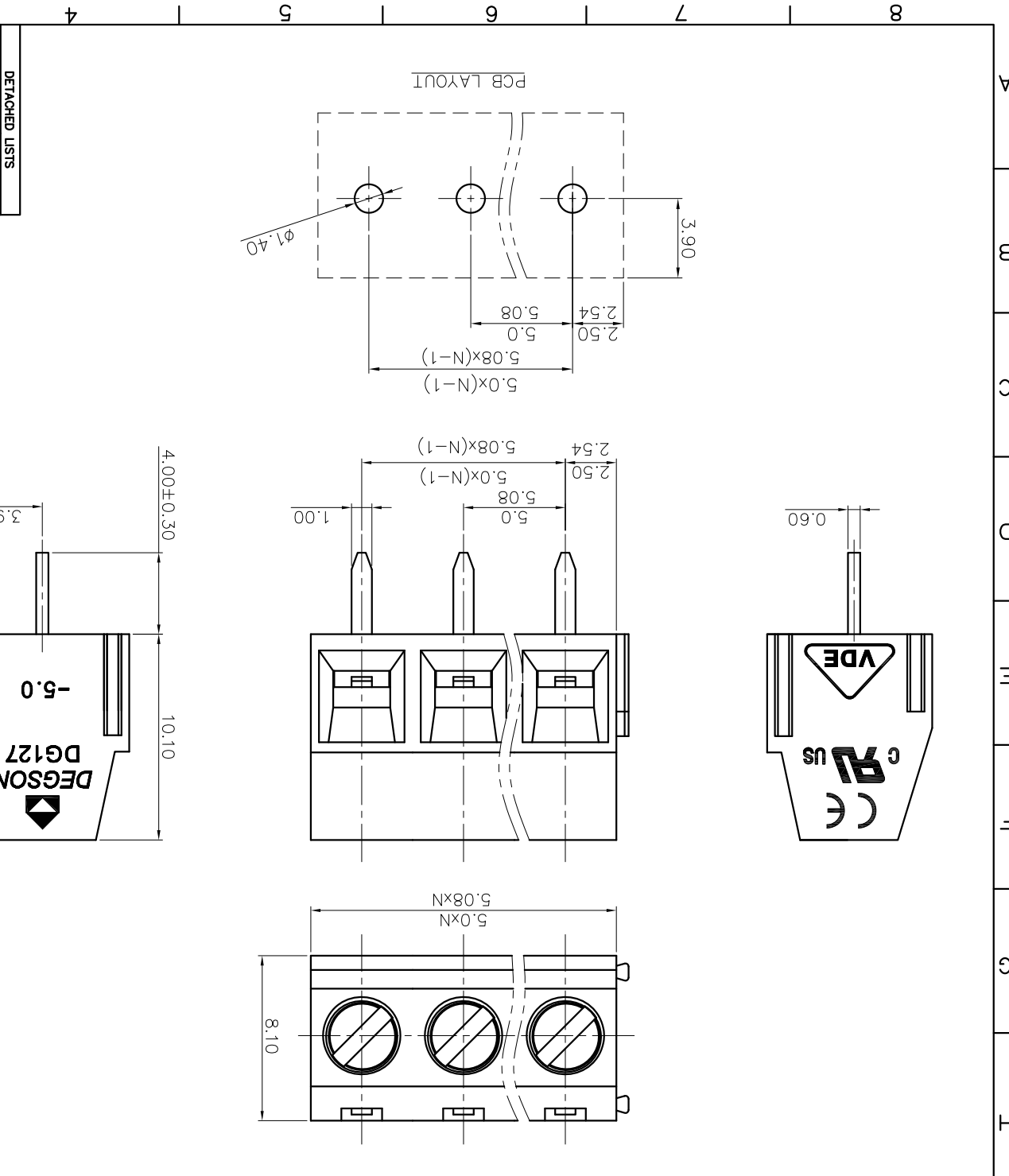


REVISION RECORD			
REV	ECN	DESCRIPTION	DATE

PART NO.:	NINGBO DEGSON ELECTRICAL CO., LTD		
	宁波高松电子有限公司		
NAME:	DG127-5.0/5.08-XXP-1Y-00A(H)		
APPD:	/		
CHKD:	/		
DRFT:	/		
TITLE:	CUSTOMER DRAWING	REV	D0
DRAWING NO.:	/	SHEET	1/1
THIRD ANGLE PROJECTION	DO NOT SCALE DRAWING		
	MM	SCALE	1:1
	(INCH)		



Color: 1.(Grey)2.(Blue)3.(Black)4.(Green)5.(Orange)6.(Red)7.(Transparent)8.(Yellow)9.(White)

(Series No.) (Pitch) (Poles) (Single Pitch)

DG127 - 5.0/5.08 - XXP - 1Y - 00A (H)

00A-(Standard) (Rohs)

7.Rohs Compliance

Pitch range in mm	mm	in mm	mm	in mm
±2.0	±0.15	±0.20	±0.30	±1.30
TO	6	TO	10	±1.30
Over	10	TO	24	±1.00
Over	6	TO	30	±1.00
Over	10	TO	60	±1.00
Over	10	TO	100	±1.00
Over	30	TO	150	±1.30
Over	60	TO	150	±1.30
Over	100	TO	150	±1.30
Over	150	TO	150	±1.30

NOTE1:
 UL Standard
 1.Rated Voltage/Current : 300V / 12A
 2.Torque Value : M2.5 , 3.54Lb.in
 3.Wire Range : 26~14AWG

NOTE2:
 IEC Standard
 1.Rated Voltage/Current : 250V / 15A
 2.Torque Value : M2.5 , 0.4N.m
 3.Wire Range : 1.5mm²

NOTE3:
 1.Dimension shall be interpreted per ASME Y14.5-2009
 2.Pitch : 5.0/5.08mm, Poles : N=02~24P
 3.Stripping length : 5mm
 4.Withstanding Voltage : AC2000V/1min.
 5.Operating temperature: -40°C~+105°C
 6.Undimensioned Tolerances:

X-ON Electronics

Largest Supplier of Electrical and Electronic Components

Click to view similar products for [Aluminium Electrolytic Capacitors - Screw Terminal](#) category:

Click to view products by [Degson](#) manufacturer:

Other Similar products are found below :

[A331FH221M500A](#) [A331FB472M063A](#) [A331FD153M040A](#) [A331FD682M063A](#) [A331LH223M063A](#) [A331PM682M200A](#)
[36DA332F350CD2A](#) [ETOR401CTH902QEG8N](#) [C1808N680J302T](#) [A331PM472M250A](#) [500X822U450DG1B](#) [A331LH683M025A](#)
[A331LM333M063A](#) [A331TW682M500A](#) [500332U050BB2B](#) [ALS31B1003NX](#) [E32D600LPN133TDA5M](#) [550152M200BC2B](#)
[36DX253G075DC2A](#) [101C282U063AK2A](#) [DB301V-3.5-3P-GN](#) [DB301V-3.5-2P-GN](#) [WR479M1JT1LO5](#) [OBJ35](#) [OBJ35A](#)
[WL338M2WU1AD6](#) [WL 10000U/100V](#) [WL 4700U/200V](#) [B43310A5109M000](#) [B43310C9228M000](#) [B43310A9828M000](#)
[GT1H109M35060SB](#) [GT1H229M35100SB](#) [GT1J229M35120SB](#) [GT2A229M51100SB](#) [GT2W227M35060SB](#) [GT2W228M64120SB](#)
[WR229M1JS80O5](#) [WR188M2WS1MO5](#) [WL158M2WS1AO5](#) [WR478M2WU1PD6](#) [2738](#) [ALS30A151DB500](#) [ALS30A152KF350](#)
[ALS30A682DF100](#) [ALS31A103DE063](#) [ALS40A223DB025](#) [ALS40A223KF063](#) [ALS40A472DF100](#) [ALS40A473DF025](#)