

REVISION RECORD			
REV	ECN	DESCRIPTION	DATE

(Color): 1.(Grey) 2.(Blue) 3.(Black) 4.(Green) 5.(Orange) 6.(Red) 7.(Transparent) 8.(Yellow) 9.(White)
 (Series No.) (Pitch) (Poles) (Single Pitch)
 DG636 -- 7.62 -- XXP -- 1Y -- 00A (H)
 (RoHS) 00A--(Standard)

NOTES1:
 UL Standard
 1.Rated voltage/current: 300V / 30A
 2.Torque value: M3, 4.43lb.in
 3.Wire range: 26~10AWG

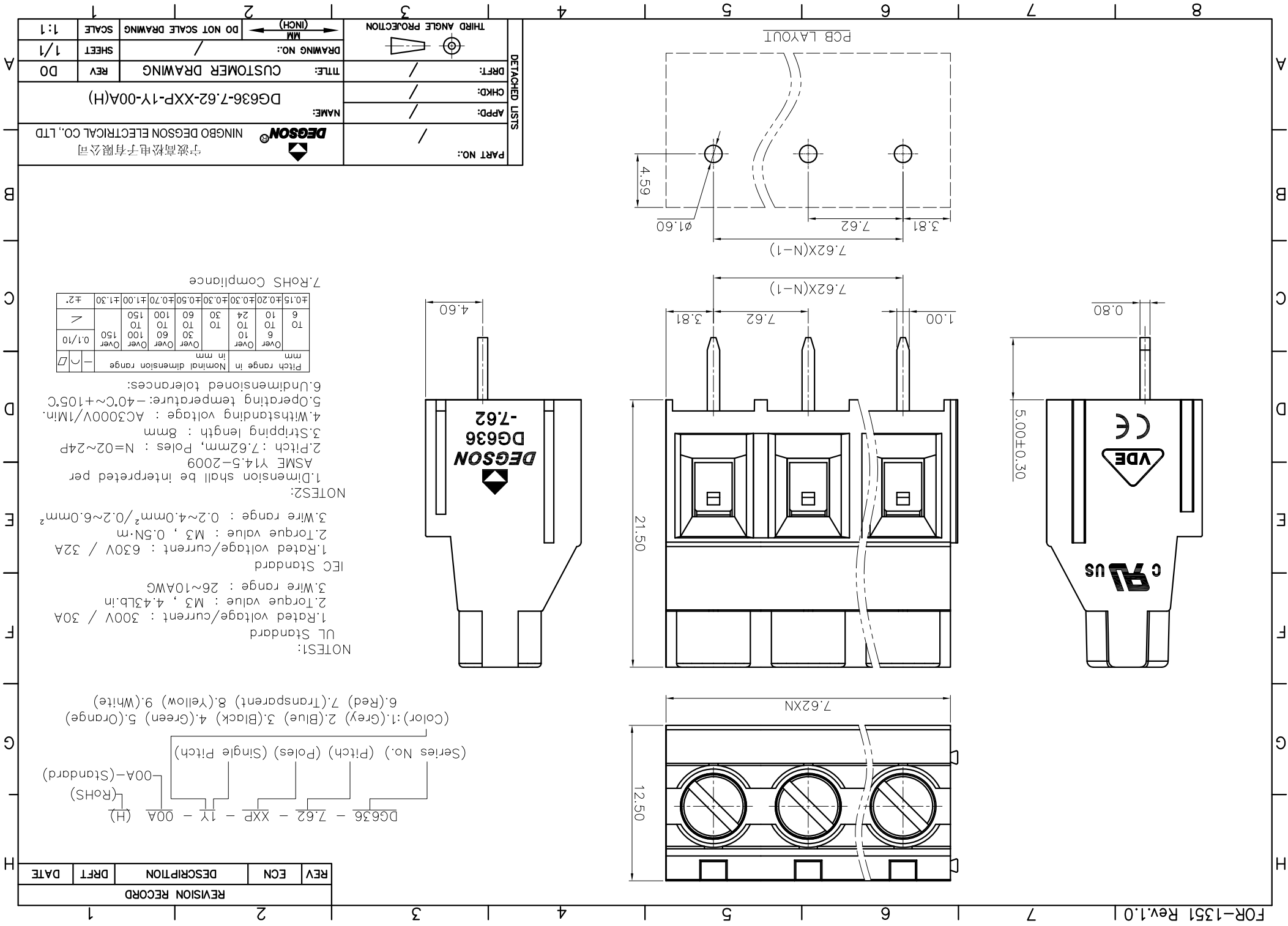
IEC Standard
 1.Rated voltage/current: 630V / 32A
 2.Torque value: M3, 0.5N.m
 3.Wire range: 0.2~4.0mm²/0.2~6.0mm²

NOTES2:
 1.Dimension shall be interpreted per ASME Y14.5-2009
 2.Pitch: 7.62mm, Poles: N=02~24P
 3.Stripping length: 8mm
 4.Withstanding voltage: AC3000V/1min.
 5.Operating temperature: -40C~+105C
 6.Undimensioned tolerances:

Pitch range in mm		Nominal dimension range in mm	
Over	6	Over	150
TO	10	TO	100
TO	24	TO	150
Over	30	Over	60
Over	30	Over	100
±0.30	±0.30	±0.70	±1.00
±0.20	±0.30	±1.00	±1.30
±0.15	±0.20	±1.00	±2.00

7.RoHS Compliance

PART NO.:	NINGBO DEGSON ELECTRICAL CO.,LTD	
	宁波高松电子有限公司	
NAME:	DG636-7.62-XXP-1Y-00A(H)	
APPD:	/	
CHKD:	/	
DRFT:	/	
TITLE:	CUSTOMER DRAWING	REV
DRAWING NO.:	/	SHEET
THIRD ANGLE PROJECTION	(INCH)	SCALE
DO NOT SCALE DRAWING	1:1	



X-ON Electronics

Largest Supplier of Electrical and Electronic Components

Click to view similar products for [Fixed Terminal Blocks](#) category:

Click to view products by [Degson](#) manufacturer:

Other Similar products are found below :

[00175550202](#) [MBE-1512](#) [MBE-1520](#) [MBE-154](#) [MBE-156](#) [MBES-1510](#) [MBES-153](#) [MBES-156](#) [MH-2512](#) [MHE-132](#) [MHE-133](#) [MHE-163](#)
[MI-254 \(35\)](#) [MI-272](#) [8739](#) [880507](#) [880508](#) [MPT-275](#) [1546551-6](#) [ELM023100](#) [ELM10110G](#) [ELVD12100](#) [BA311TU](#) [BA411SU](#) [MV-152](#)
[MV-253/NCNOC](#) [MV-254-D](#) [MV-255](#) [MV-462](#) [MV-472](#) [MV-493](#) [MVE-252](#) [MVE-253](#) [MVE-258](#) [MVE-273](#) [MVEB-153](#) [1700096](#)
[1702246](#) [1705142](#) [1712417](#) [1713020](#) [1713088](#) [1776118-2](#) [1790852](#) [1-796689-8](#) [1-796692-6](#) [1800001](#) [1800114](#) [1823215](#) [1838462](#)