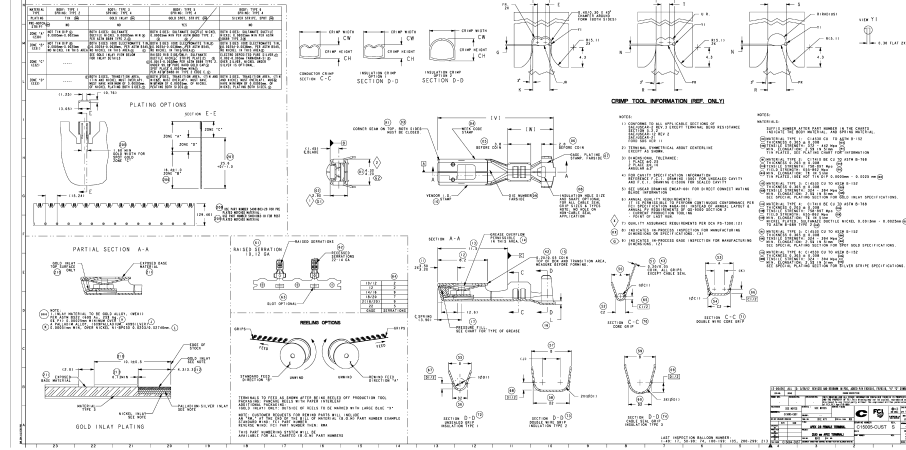


REF ID	SYMBOL	DESCRIPTION	UNIT	QTY	ASSEMBLY	OPERATION	LOCATION
002	0013	ALUMINUM PLATE	1.50	1	001	PLATE	PLATE 001
003	0014	ALUMINUM PLATE	1.50	1	001	PLATE	PLATE 002
004	0015	ALUMINUM PLATE	1.50	1	001	PLATE	PLATE 003
005	0016	ALUMINUM PLATE	1.50	1	001	PLATE	PLATE 004

REF ID	SYMBOL	DESCRIPTION	UNIT	QTY	ASSEMBLY	OPERATION	LOCATION
006	0017	ALUMINUM PLATE	1.50	1	001	PLATE	PLATE 005
007	0018	ALUMINUM PLATE	1.50	1	001	PLATE	PLATE 006
008	0019	ALUMINUM PLATE	1.50	1	001	PLATE	PLATE 007
009	0020	ALUMINUM PLATE	1.50	1	001	PLATE	PLATE 008

REF ID	SYMBOL	DESCRIPTION	UNIT	QTY	ASSEMBLY	OPERATION	LOCATION
010	0021	ALUMINUM PLATE	1.50	1	001	PLATE	PLATE 009
011	0022	ALUMINUM PLATE	1.50	1	001	PLATE	PLATE 010
012	0023	ALUMINUM PLATE	1.50	1	001	PLATE	PLATE 011
013	0024	ALUMINUM PLATE	1.50	1	001	PLATE	PLATE 012



CNMF TOOL INFORMATION (REF. 04.1)

NOTE:
 (1) DIMENSIONS TO SURFACE UNLESS OTHERWISE SPECIFIED.
 (2) DIMENSIONS TO CENTERLINE UNLESS OTHERWISE SPECIFIED.
 (3) DIMENSIONS TO DIMENSION LINE UNLESS OTHERWISE SPECIFIED.
 (4) DIMENSIONS TO DIMENSION LINE UNLESS OTHERWISE SPECIFIED.
 (5) DIMENSIONS TO DIMENSION LINE UNLESS OTHERWISE SPECIFIED.
 (6) DIMENSIONS TO DIMENSION LINE UNLESS OTHERWISE SPECIFIED.
 (7) DIMENSIONS TO DIMENSION LINE UNLESS OTHERWISE SPECIFIED.
 (8) DIMENSIONS TO DIMENSION LINE UNLESS OTHERWISE SPECIFIED.
 (9) DIMENSIONS TO DIMENSION LINE UNLESS OTHERWISE SPECIFIED.
 (10) DIMENSIONS TO DIMENSION LINE UNLESS OTHERWISE SPECIFIED.

NOTE:
 UNLESS OTHERWISE SPECIFIED AND/OR INDICATED
 DIMENSIONS ARE TO FACE UNLESS SHOWN AND/OR
 DIMENSIONS TO CENTERLINE UNLESS OTHERWISE SPECIFIED AND/OR
 DIMENSIONS TO DIMENSION LINE UNLESS OTHERWISE SPECIFIED.
 SEE DIMENSIONS FOR PRECISE TOOL PART DATA.

CNMF TOOL INFORMATION	SYMBOL	DESCRIPTION	UNIT	QTY	ASSEMBLY	OPERATION	LOCATION
014	0025	ALUMINUM PLATE	1.50	1	001	PLATE	PLATE 013
015	0026	ALUMINUM PLATE	1.50	1	001	PLATE	PLATE 014
016	0027	ALUMINUM PLATE	1.50	1	001	PLATE	PLATE 015
017	0028	ALUMINUM PLATE	1.50	1	001	PLATE	PLATE 016
018	0029	ALUMINUM PLATE	1.50	1	001	PLATE	PLATE 017

15324842

		15324842 15324842
		15324842 15324842
		15324842 15324842
		15324842 15324842
		15324842 15324842
		15324842 15324842

12354845

X-ON Electronics

Largest Supplier of Electrical and Electronic Components

Click to view similar products for [Automotive Connectors](#) category:

Click to view products by [Delphi](#) manufacturer:

Other Similar products are found below :

[003-018-000](#) [600858](#) [60403001](#) [60993906-B](#) [60993913-B](#) [629515004020001](#) [M902-2131](#) [M902-2161](#) [M902-2344](#) [72.330.1035.1](#)
[73.353.4028.0](#) [F118010](#) [F119300-B](#) [F132210](#) [F132210-B](#) [F166900](#) [F180100](#) [F258300](#) [F258300-B](#) [F294300-B](#) [F339100](#) [F339700](#) [F358300-](#)
[B](#) [F374110](#) [F407400](#) [F412210](#) [F427600](#) [F444110](#) [F487000](#) [F495100-B](#) [F500900-B](#) [F509500B-B](#) [770444-1](#) [776880-1](#) [827153-1](#) [881735-1](#)
[8N1515-32-24P](#) [9-1326727-8](#) [9-1326729-8](#) [925467-1](#) [925474-1](#) [928905-1](#) [936398-2](#) [964562-1](#) [964562-4](#) [964731-2](#) [965051-1](#) [968782-1](#)
[GT17SA-8DS-HU](#) [GT17VS-10DP-5.2CF](#)