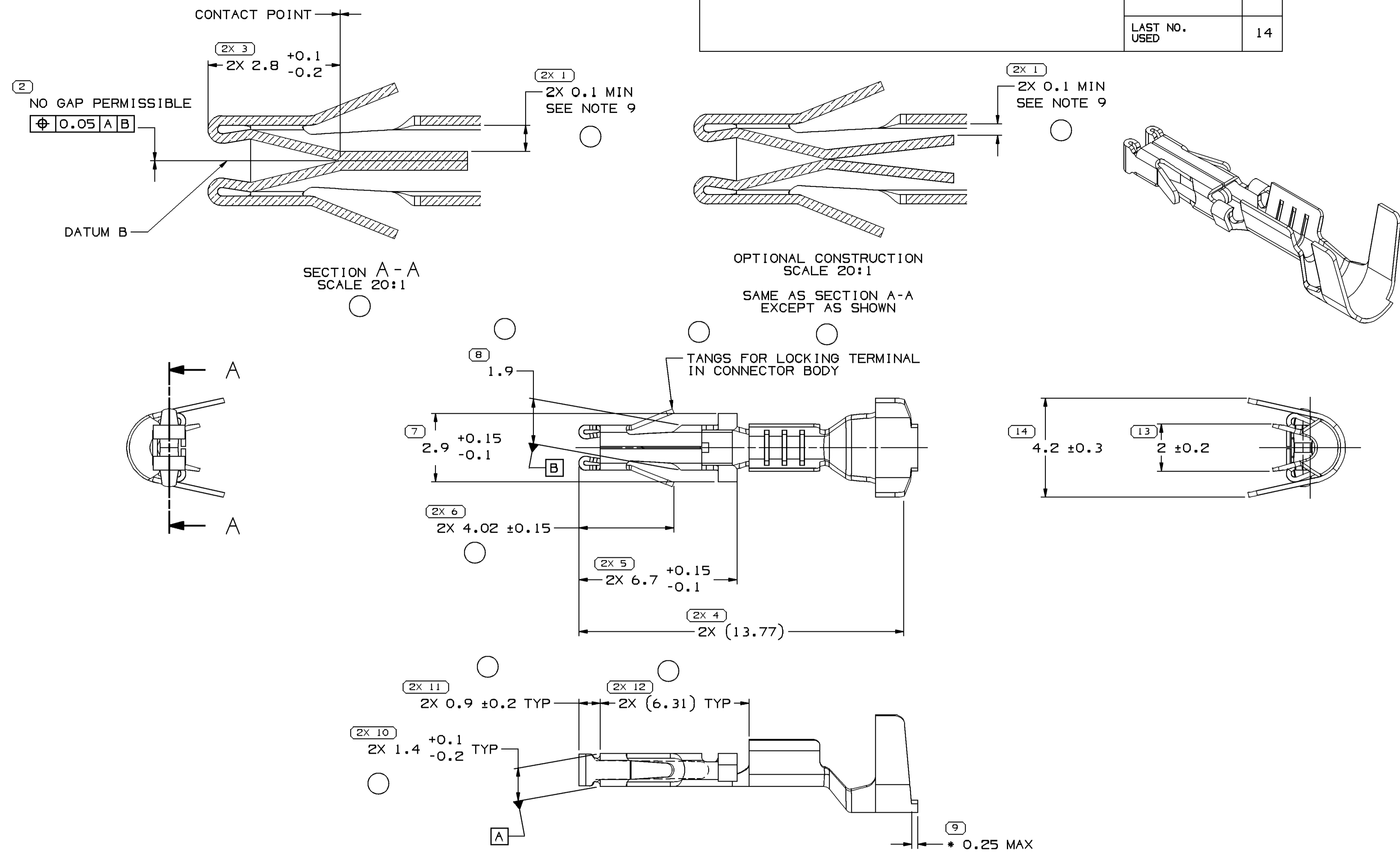


SYMBOL DEFINITION		MISSING SYMBOLS	
A DIMENSION WITHOUT AN INSPECTION REPORT SYMBOL DOES NOT REQUIRE INSPECTION. IT MAY BE CONTROLLED ON THE INDIVIDUAL COMPONENT DRAWING.	TOTAL NO OF INSPECTIONS REQUIRED	NO MISSING SYMBOL NUMBER	24
	LAST NO. USED		14

DWG STATUS					REVISION HISTORY				AUTH			
DATE	STG	REV	N/P	CHG	ZONE					DR	APVD1	APVD2
190C01	R	D4	-	-		CLEARED REV COLUMN AND REVISED GRAPHICS	215935	JAA	JAA	MW		
16AP02	R	D5	-	-		UPDATED FORMAT AND REVISED GAP NOTE ON TQD DWG	223829	RAB	RAB	MD		
29N002	R	D6	-	-		UPDATED PDM ATTRIBUTES	233435	LOA	FRG	RF		
03JA03	R	D7	-	-		2.9+0.15-0.1 WAS 2.900.15 AND 2X 6.7 +0.15-0.1 WAS 2X 6.700.15	235051	TLD	TLD	RF		
17MR03	R	05	-	-		UPDATED PDM ATTRIBUTES	238452	TLD	TLD	RF		
100C14	R	05	AA	-		2X 1.4 +0.1/-0.2 WAS 1.4, 2X 4.02 ±0.15 WAS 2X 3.95 ±0.15, ADDED DIMS (3 PLCS) SECTION A-A & OPTIONAL CONSTRUCTION VIEW, SEE NOTE 9 LABEL, TERMINAL TO ACCEPT, MATING SQUARE, TERMINAL MUST RETAIN AND CONTACT ARM MEASUREMENT INSPECTION NOTES	427853	HCG	HCG	JFF		



- NOTES
- UNLESS OTHERWISE SPECIFIED AND/OR INDICATED: DIMENSIONS ARE TO FACE OF VIEW SHOWN AND AUTOMATICALLY ROUNDED BY COMPUTER FOR INSPECTION (SEE MATH MODEL FOR PRECISE DIMENSIONS). FOR ALL OTHER DIMENSIONS NOT SHOWN BUT REQUIRED FOR TOOL BUILD, SEE MATH MODEL FOR PRECISE TOOL PATH DATA.
 - * DENOTES DIMENSION IS MADE AT CUT OFF AND CRIMP DIE.
 - MATING CONNECTOR 15305080 OR EQUIVALENT.
 - TERMINALS TO ACCEPT AND RETAIN CABLE SEAL 12191226 OR EQUIVALENT.
 - REFER TO M-3725 FOR MATERIAL PROPERTIES.
 - TERMINAL TO ACCEPT 0.35-0.5MM² CABLE.
 - MATING SQUARE BLADE DEFINED BY EWCAP-001 USCAR Blades rev J.
 - TERMINAL MUST RETAIN A 0.64 SQUARE HARDENED STEEL PIN 200 GRAMS IN WEIGHT, INSERTED 3.9mm FROM FRONT OF TERMINAL. REFER TO EWCAP-001 USCAR Blades rev J FOR PIN TIP GEOMETRY.
 - THE SUM ON THE TWO CONTACT ARM TIP TO SIDEWALL GAP MEASUREMENTS (INSPECTION #1) MUST BE 0.5 MIN.

<p>INDICATES THAT PHYSICAL PARTS ARE NOT AVAILABLE FOR ORDERING.</p> <p>PART NUMBERS THAT DO NOT HAVE A LINE PRESENT INDICATE THAT PHYSICAL PARTS ARE AVAILABLE FOR ORDERING.</p> <p>CONTACT DELPHI SALES TO ASSURE AVAILABILITY OF PARTS.</p>													
<p>DWG TYPE: PART DRAWING</p>													
<p>STYLE</p>													
VOLUME (C/P)	DISTR CODE												
	D												
<p>UNLESS OTHERWISE SPECIFIED</p> <p>THIS DOCUMENT IS IN ACCORDANCE WITH ASME Y14.5M-1994 AS MODIFIED BY THE GM GLOBAL DIMENSIONING AND TOLERANCING ADDENDUM - 1997. ALL GEOMETRIC TOLERANCES AND RELATED DATUMS APPLY RFS. RULE #1 (PERFECT FORM AT MMPI) DOES NOT APPLY WHEN RELATIONSHIP BETWEEN FEATURES IS ESTABLISHED BY ORIENTATION OR LOCATION TOLERANCES. SEPARATE POSITION CALLOUTS MAY BE GAGED SEPARATELY, REGARDLESS OF DATUM REFERENCE.</p> <p>ALL DIMENSIONS ARE IN MILLIMETERS</p>													
<p>REFERENCE</p>													
<p>THIRD ANGLE PROJECTION</p>													
<p>DO NOT SCALE</p>													
<p>USE MATH DATA</p>													
<p>14 PROCESS SENSITIVE DIMENSION</p> <p>DIMENSIONS ENCLOSED IN () INDICATE REFERENCE DIMENSIONS AND NO TOLERANCE LIMITS ARE ESTABLISHED</p> <table border="1"> <thead> <tr> <th>DIMENSIONAL RANGE (MM)</th> <th>CHART D</th> </tr> </thead> <tbody> <tr> <td>FROM 0</td> <td>> 12</td> </tr> <tr> <td>TO 12</td> <td>> 12</td> </tr> <tr> <td colspan="2">TOLERANCE UNLESS OTHERWISE SPECIFIED</td> </tr> <tr> <td>±0.1</td> <td>±0.2</td> </tr> <tr> <td colspan="2">ANGULAR TOLERANCE ±2°</td> </tr> </tbody> </table>		DIMENSIONAL RANGE (MM)	CHART D	FROM 0	> 12	TO 12	> 12	TOLERANCE UNLESS OTHERWISE SPECIFIED		±0.1	±0.2	ANGULAR TOLERANCE ±2°	
DIMENSIONAL RANGE (MM)	CHART D												
FROM 0	> 12												
TO 12	> 12												
TOLERANCE UNLESS OTHERWISE SPECIFIED													
±0.1	±0.2												
ANGULAR TOLERANCE ±2°													

DELPHI
 DELPHI PACKARD ELECTRICAL/ELECTRONIC ARCHITECTURE
 WARREN, OH
 COPYRIGHT 1996 DELPHI CORPORATION AND/OR ITS AFFILIATES. ALL RIGHTS RESERVED.
 REVISED 2014
 THIS DRAWING IS THE PROPERTY OF DELPHI CORPORATION AND CONTAINS DELPHI CONFIDENTIAL INFORMATION. THE REPRODUCTION, DISTRIBUTION AND UTILIZATION OF THIS DOCUMENT OR ITS RELATED CAD DATA, AS WELL AS COMMUNICATION OF ANY CONTENT TO OTHERS, WITHOUT EXPRESS AUTHORIZATION, IS PROHIBITED.

DR	DATE
APVD1 G.G. IZQUIERDO	30JL96
APVD2 MANUEL VEGA	30JL96
APVD3 R. POLENICK	23DE97
APVD4	
APVD5	

SUBSTANCES OF CONCERN AND RECYCLED CONTENT PER DELPHI-A 10949001

MATERIAL M-3725-965 BECU ALLOY

DRAWING NAME
 TERM F MIC/P 064 SN SEALED TANG

DRAWING NUMBER
 15305174

SIZE A1	SCALE 10:1	FRAME NO 1 OF 1	SHEET NO 1 OF 1	STG R	REV 05	N/P AA
---------	------------	-----------------	-----------------	-------	--------	--------

X-ON Electronics

Largest Supplier of Electrical and Electronic Components

Click to view similar products for [Automotive Connectors](#) category:

Click to view products by [Delphi](#) manufacturer:

Other Similar products are found below :

[003-018-000](#) [600858](#) [60403001](#) [60993906-B](#) [60993913-B](#) [629515004020001](#) [M902-2131](#) [M902-2161](#) [M902-2344](#) [72.330.1035.1](#)
[73.353.4028.0](#) [F118010](#) [F119300-B](#) [F132210](#) [F132210-B](#) [F166900](#) [F180100](#) [F258300](#) [F258300-B](#) [F294300-B](#) [F339100](#) [F339700](#) [F358300-](#)
[B](#) [F374110](#) [F407400](#) [F412210](#) [F427600](#) [F444110](#) [F487000](#) [F495100-B](#) [F500900-B](#) [F509500B-B](#) [770444-1](#) [776880-1](#) [827153-1](#) [881735-1](#)
[8N1515-32-24P](#) [9-1326727-8](#) [9-1326729-8](#) [925467-1](#) [925474-1](#) [928905-1](#) [936398-2](#) [964562-1](#) [964562-4](#) [964731-2](#) [965051-1](#) [968782-1](#)
[GT17SA-8DS-HU](#) [GT17VS-10DP-5.2CF](#)