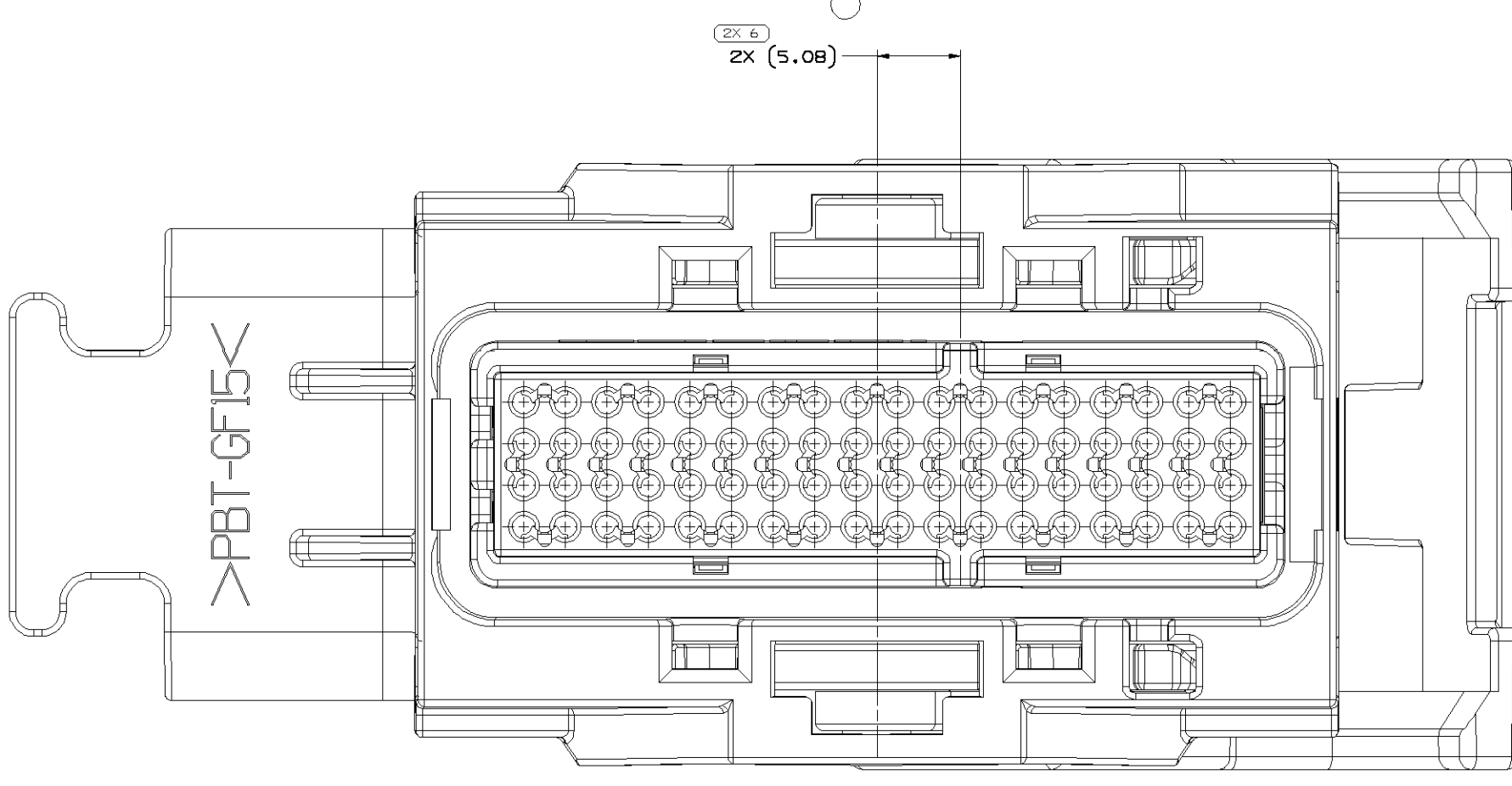
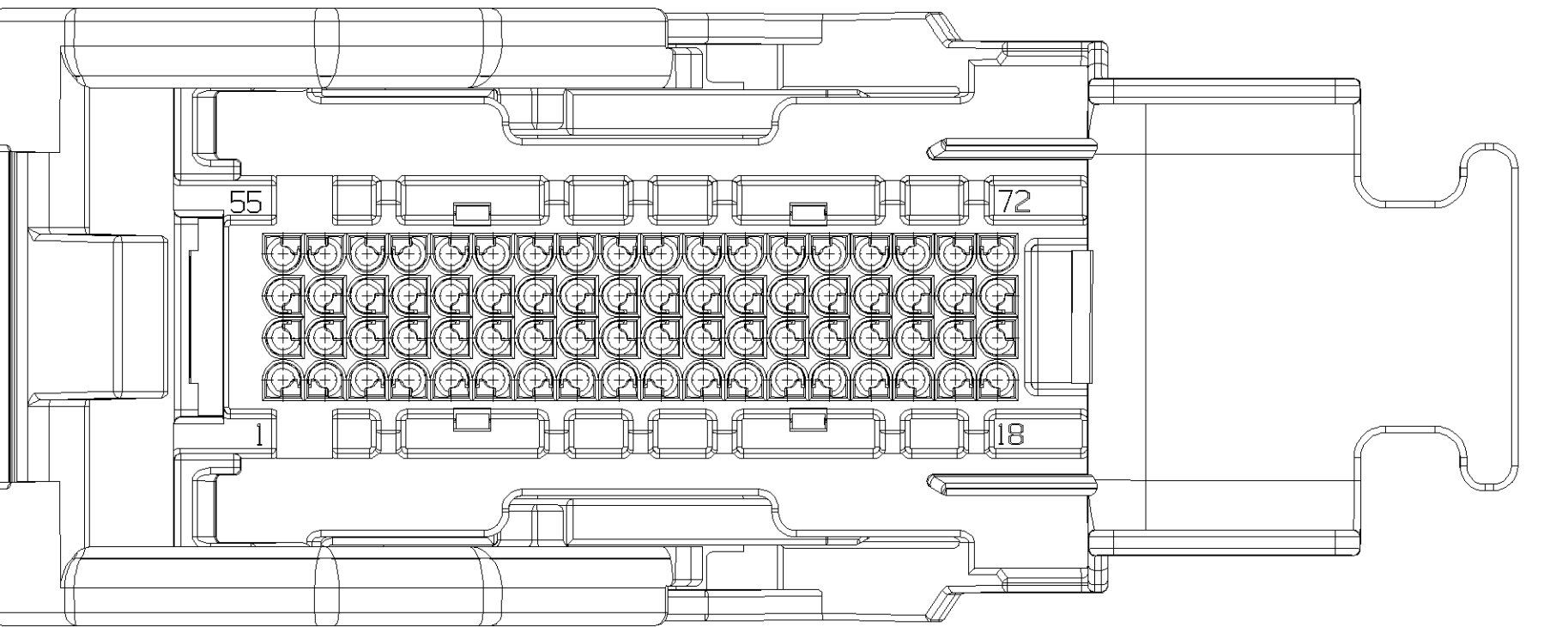
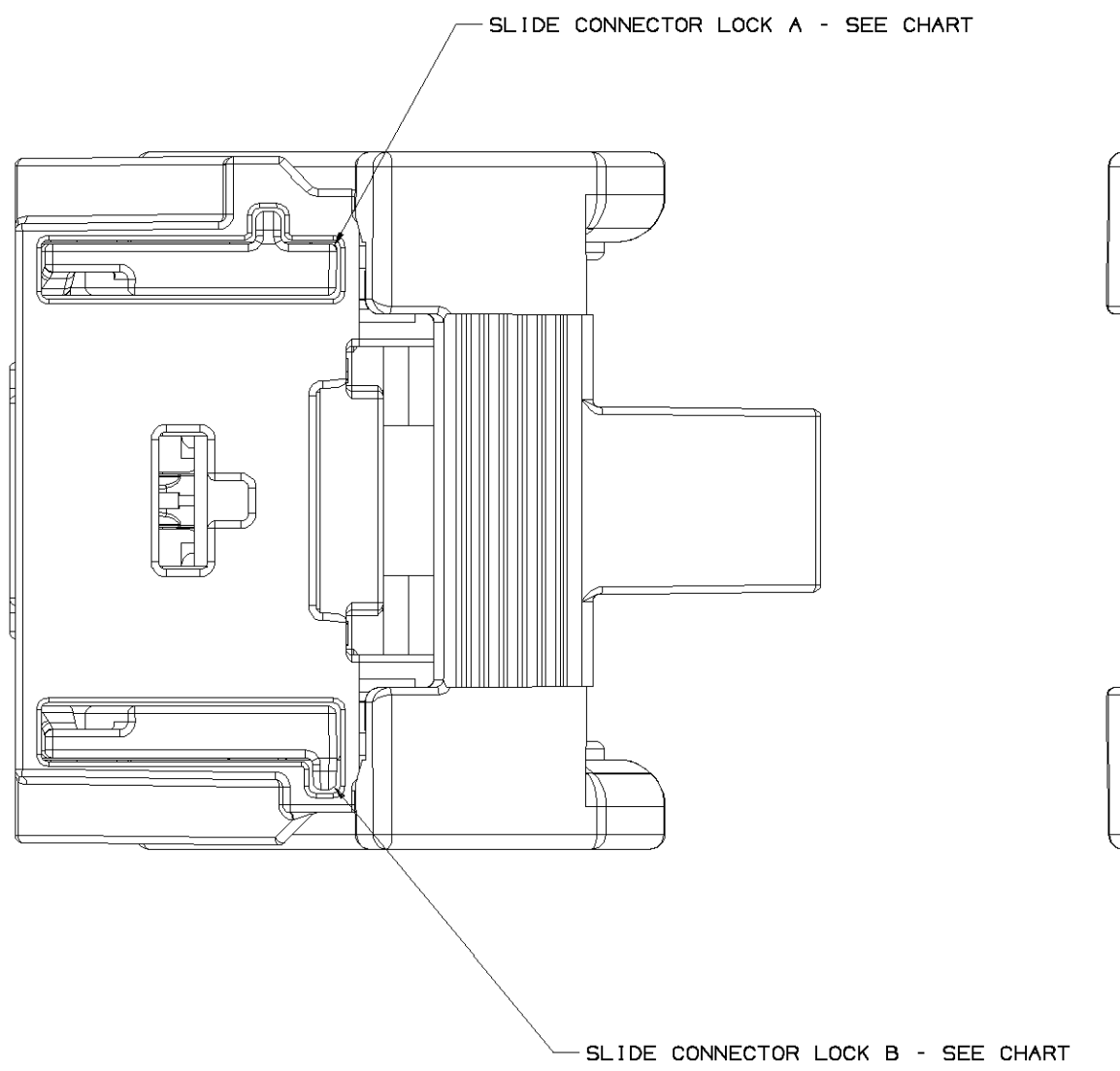
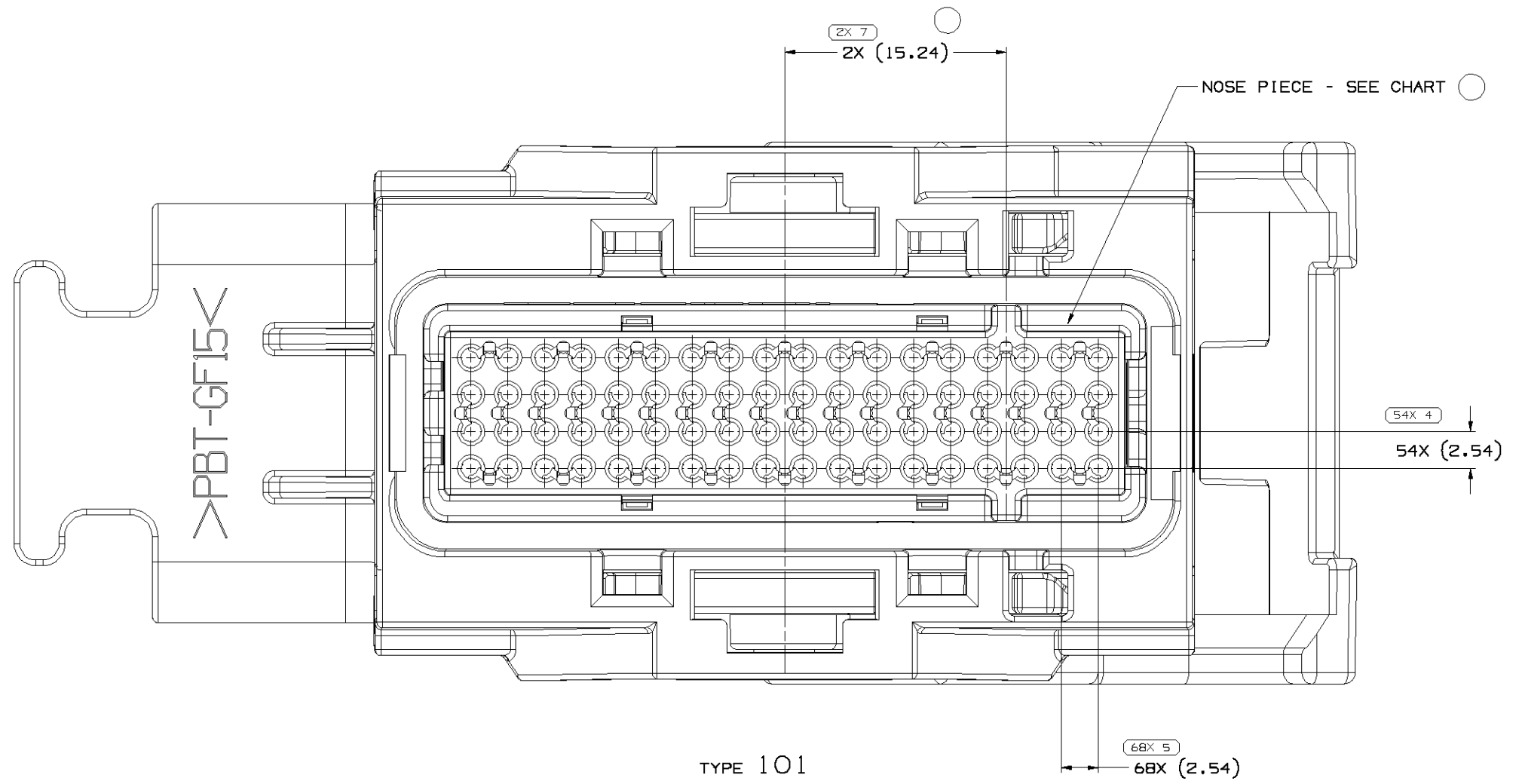
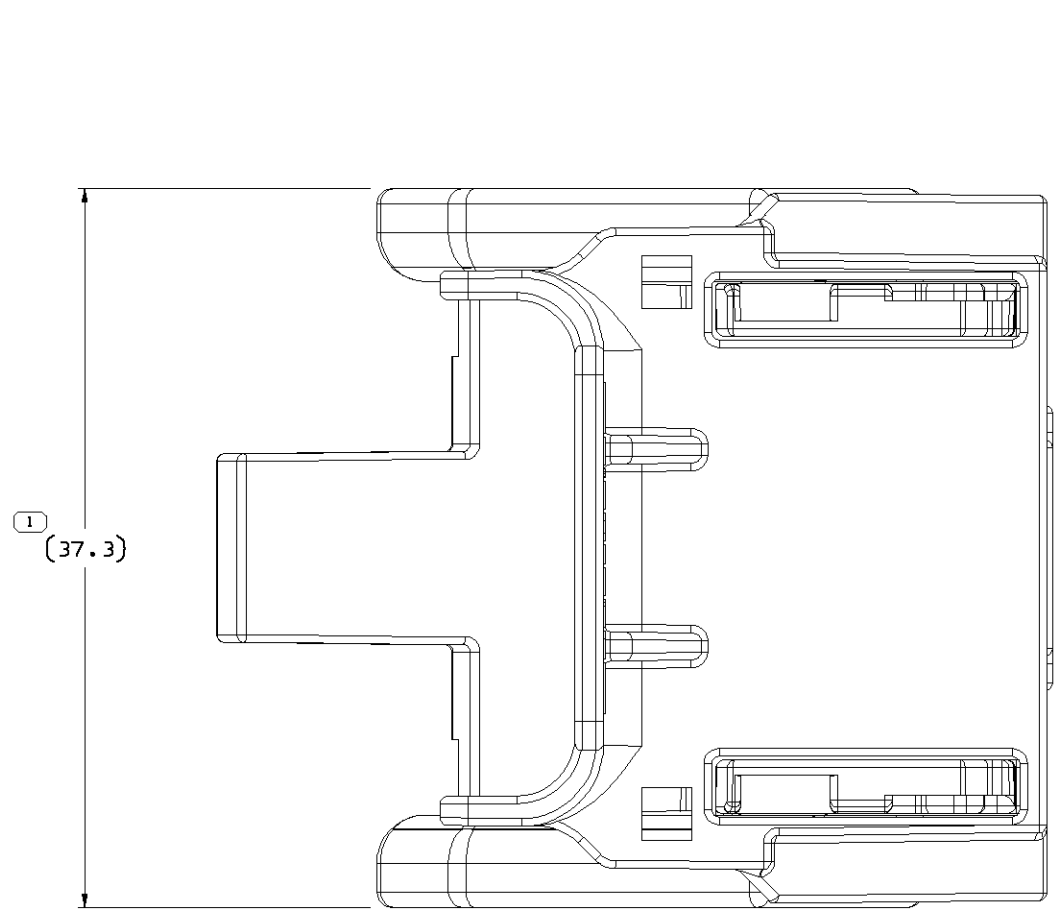
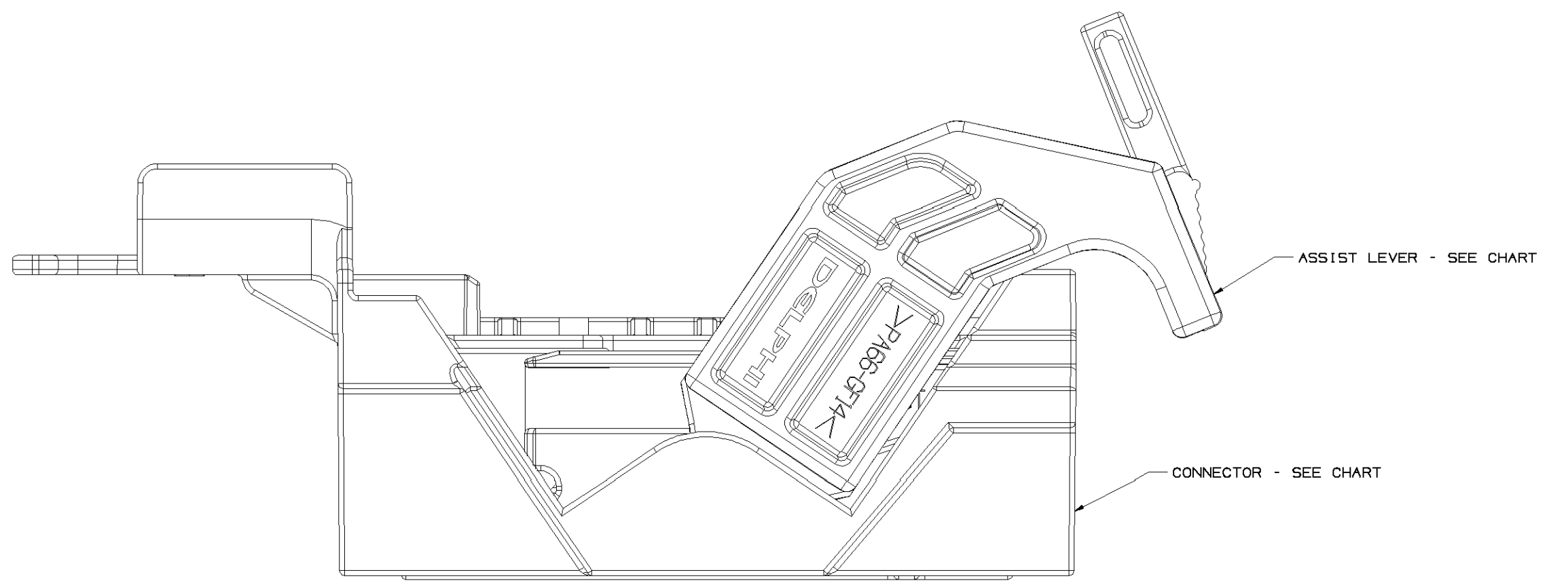
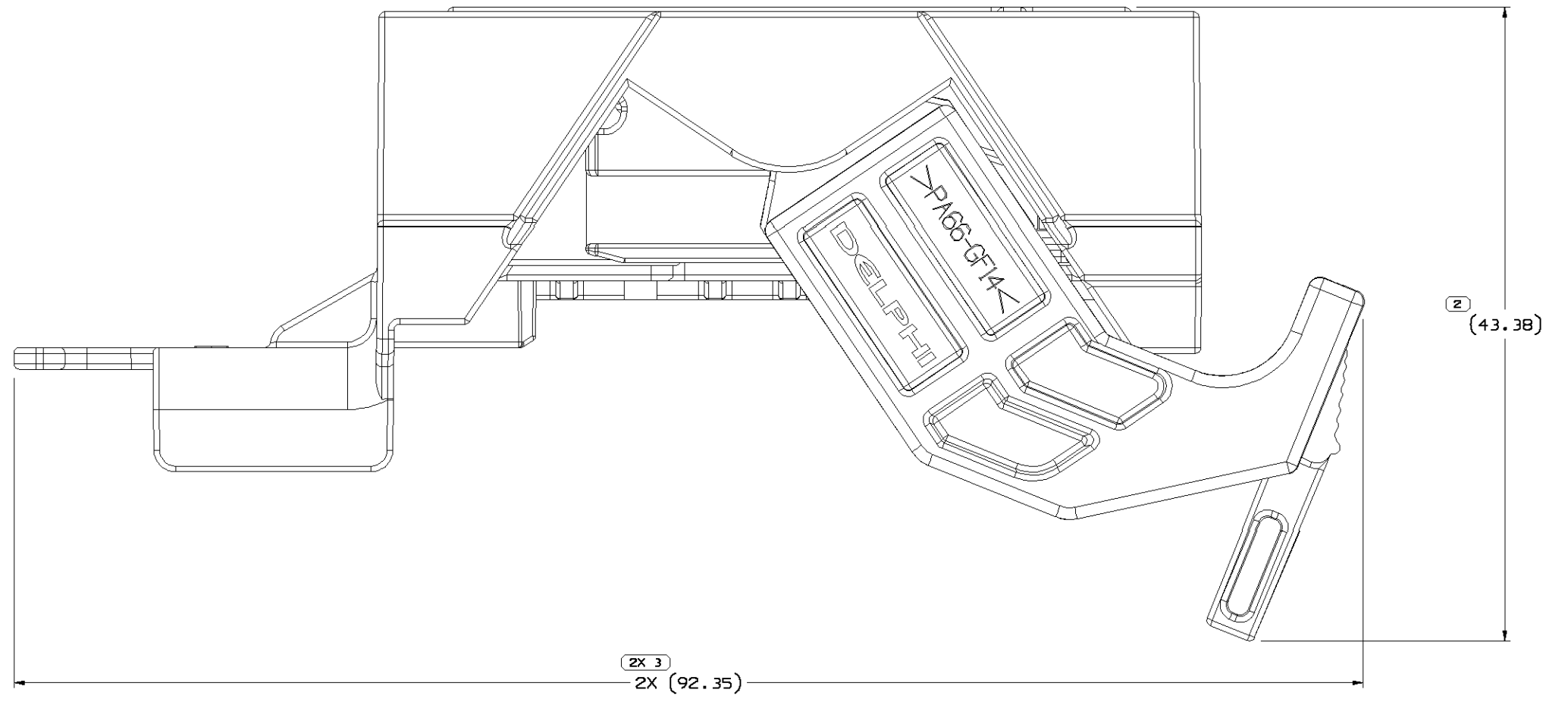


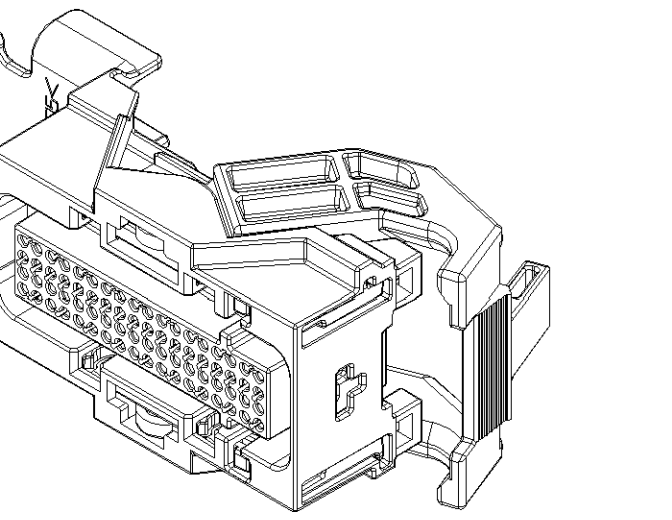
SYMBOL DEFINITION		MISSING SYMBOLS		REVISION HISTORY	
A DIMENSION WITHOUT AN INSPECTION REPORT SYMBOL DOES NOT REQUIRE INSPECTION. IT MAY BE CONTROLLED ON THE INDIVIDUAL COMPONENT DRAWING.		TOTAL NO. OF INSPECTIONS REQUIRED	130	DATE	DESCRIPTION
LAST NO. USED		7			
NO MISSING SYMBOL NUMBER		DATE	DESCRIPTION	DATE	DESCRIPTION
		280220	R 01		ALL PARTS - WERE SEPERATE DRAWINGS
		079005	R 02		ALL PARTS - ADDED DIMS 12 PLCS & 10 COMPONENT LABELS; REVISED NOTES & CHART
		260005	R 03		15393121 - NOSE PIECE WAS 15393124; 15393122 - NOSE PIECE WAS 15393125 AND REMOVED ISO VIEW; ALL PARTS - ADDED DIMS #6 & #7 AND REVISED CHARTS AND NOTES



TYPE 102
SAME AS TYPE 101
EXCEPT AS SHOWN



- NOTES
- UNLESS OTHERWISE SPECIFIED AND/OR INDICATED: DIMENSIONS ARE TO FACE OF VIEW SHOWN AND AUTOMATICALLY ROUNDED BY COMPUTER FOR INSPECTION (SEE MATH MODEL FOR PRECISE DIMENSIONS). FOR ALL OTHER DIMENSIONS NOT SHOWN BUT REQUIRED FOR TOOL BUILD, SEE MATH MODEL FOR PRECISE TOOL PATH DATA.
 - SEALING CODE 0 - UNSEALED
 - REFERENCE MATING COMPONENTS OR EQUIVALENT: SHROUD - SEE CHART
 - ONLY TIN PLATED FEMALE TERMINALS SHOULD BE USED WHEN MATING TO TIN PLATED MALE PINS. GOLD PLATED FEMALE TERMINALS SHOULD ONLY BE USED WHEN MATING TO GOLD PLATED MALE PINS.
 - ASSIST LEVER MUST BE IN PRE-STAGE LOCKED POSITION AS SHOWN. NOSE PIECE MUST BE IN FULLY LOCKED POSITION AS SHOWN.
 - THIS PART ACCEPTS THE FOLLOWING MANDATORY COMPONENTS:
 - TERMINAL 15394147
 - MAX INSULATION CRIMP MUST BE LESS THAN 2 HIGH AND 2 WIDE.
 - SECONDARY TERMINAL LOCK 15393131
 - WIRE DRESS COVER 15393126
 - WIRE TIE M1842 (MAX WIDTH 4.8)



TYPE 101
VIEW SCALE DOES NOT REFLECT
ACTUAL PART SIZE

PARTING NUMBER		15449821	
DATE	SCALE	1 OF 2	1 OF 1
A1x4	S1	2	1

PART NO	REV	N/P	TYPE	STATUS	NOSE PIECE	CONNECTOR	ASSIST LEVER	SLIDE LOCK A	SLIDE LOCK B	MATING CONNECTOR SHROUD DETAIL
15393122	02	-	102	-	15423640	15393123	15401488	15393130	15393129	15423165
15393121	02	-	101	-	15423639	15393123	15401488	15393130	15393129	15423165

PART TYPE		PART DRAWING	
TITLE	ITEM CODE	DATE	
DELPHI	D		
BY	DATE	BY	DATE
HOLLY MECKER	090002	HOLLY MECKER	090002
BRIAN GILCHRIST	090002	BRIAN GILCHRIST	090002
UNLESS OTHERWISE SPECIFIED:		SUBSTANCES OF CONCERN ARE IDENTIFIED	
THIS DRAWING IS UNCONTROLLED UNLESS SHOWN OTHERWISE.		CONTROLLED BY DELPHI (15449821)	
SEE DRAWING		SEE DRAWING	
DRAWING NUMBER		TAXI ASM CONN F MICRO 64 MODULAR	
15449821		15449821	
S1		S1	
1 OF 2		1 OF 1	

15804421

X-ON Electronics

Largest Supplier of Electrical and Electronic Components

Click to view similar products for [Automotive Connectors](#) category:

Click to view products by [Delphi](#) manufacturer:

Other Similar products are found below :

[003-018-000](#) [600858](#) [60403001](#) [60993906-B](#) [60993913-B](#) [629515004020001](#) [M902-2131](#) [M902-2161](#) [M902-2344](#) [72.330.1035.1](#)
[73.353.4028.0](#) [F118010](#) [F119300-B](#) [F132210](#) [F132210-B](#) [F166900](#) [F180100](#) [F258300](#) [F258300-B](#) [F294300-B](#) [F339100](#) [F339700](#) [F358300-](#)
[B](#) [F374110](#) [F407400](#) [F412210](#) [F427600](#) [F444110](#) [F487000](#) [F495100-B](#) [F500900-B](#) [F509500B-B](#) [770444-1](#) [776880-1](#) [827153-1](#) [881735-1](#)
[8N1515-32-24P](#) [9-1326727-8](#) [9-1326729-8](#) [925467-1](#) [925474-1](#) [928905-1](#) [936398-2](#) [964562-1](#) [964562-4](#) [964731-2](#) [965051-1](#) [968782-1](#)
[GT17SA-8DS-HU](#) [GT17VS-10DP-5.2CF](#)