

INTRODUCTIONS

1. Direct PC board mounting for easy installation.
2. All part numbers are UL recognized, CSA certified and VDE approved.
3. Optional medical version.

COMPONENTS

PART NO.	Cx (uF)	L (mH)	Cy (pF)	R
01MK4E	0.1	10	2200	1MΩ
03MK4E		2.5		
06MK4E		1		
10MK4E				

MINIMUM INSERTION LOSS IN dB

COMMON MODE (L-G) IN 50 OHM SYSTEM							
TYPE	CURRENT RATING	FREQUENCY-MHz					
		.15	.50	1.0	5.0	10	30
01MK4E	1A	30	50	40	40	35	20
03MK4E	3A	20	30	45	48	45	30
06MK4E	6A	15	25	30	45	40	30
10MK4E	10A	12	20	30	30	35	25

DIFFERENTIAL MODE (L-L) IN 50 OHM SYSTEM							
TYPE	CURRENT RATING	FREQUENCY-MHz					
		5	15	25	35	35	28
01MK4E	1A	5	25	40	40	40	20
03MK4E	3A	5	15	25	35	35	28
06MK4E	6A	5	12	20	20	30	25
10MK4E	10A	5	15	20	30	35	35

MECHANICAL CONSTRUCTION

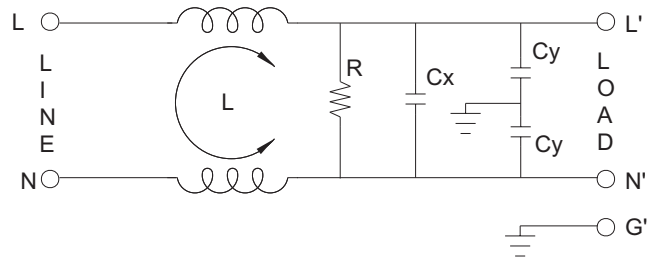


MK4E

SPECIFICATIONS

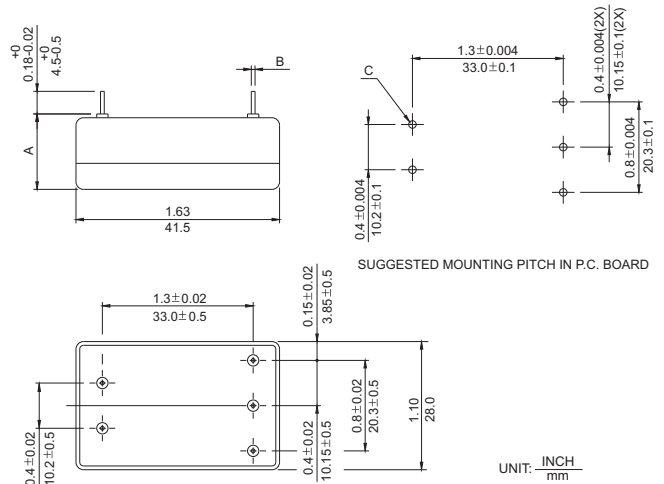
1. Maximum leakage current each line-to-ground @115VAC 60Hz: 0.2mA @250VAC 50Hz: 0.4mA
2. Hipot rating (one minute) line-to-ground: 2250VDC line-to-line: 1450VDC
3. Operating frequency: 50/60 Hz
4. Rated voltage: 115/250VAC

ELECTRICAL SCHEMATIC



SERIES DIMENSIONS

PART NO.	DIMENSIONS IN INCHES/mm		
	A	B	C
01MK4E	0.65	0.03	0.04
03MK4E	16.5	0.8	1.1
06MK4E	0.79	0.047	0.06
10MK4E	20.0	1.2	1.5



X-ON Electronics

Largest Supplier of Electrical and Electronic Components

Click to view similar products for [Power Line Filters](#) category:

Click to view products by [Delta](#) manufacturer:

Other Similar products are found below :

[6609019-3](#) [6609026-5](#) [6609030-6](#) [6609973-2](#) [D30A](#) [7-1609090-5](#) [F2810](#) [F4456A](#) [F7382Z](#) [F7863Z](#) [FAHAV3100ZC000](#) [806276](#) [FN2020B-1-06](#) [FN2080B-10-06](#) [FN2410H-32-33](#) [FN2410H-80-34](#) [FP144](#) [FS4153-20-06](#) [FS4353-500-99](#) [12-MMB-030-11-D](#) [DB4-393](#) [15811T200](#) [20B1](#) [LC630](#) [2B1](#) [1609080-2](#) [1609993-8](#) [1-6609070-1](#) [F1100AA02](#) [F1150CC10](#) [F1500CA10](#) [F1500CA15](#) [F4041Z](#) [F7585E](#) [1B1](#) [FN2070A-16-06](#) [FN2090A-20-06](#) [FN2090B-12-06](#) [FN2090Z-1-06](#) [FN2410H-25-33](#) [FN2410H-60-34](#) [FN2410H-8-44](#) [FN2412H-8-44](#) [FN323B-6-01](#) [FN610R-3-06](#) [20EHQ7](#) [20EHZ7](#) [20K1](#) [30B6](#) [3K1](#)