



# BE SERIES

## DUAL-FUSE IEC INLET FILTERS



### INTRODUCTIONS

1. Applications for UL 544 & UL 2601 health care equipment.
2. Designed as a general purpose filter with a switch effective EMI suppresion for both common and differential mode noise.
3. Bleeder resistor is added with suffix "-R".

### COMPONENTS

PART NO.	Cx (uF)	L (mH)
02BEEG3FM	0.1	4.0
04BEEG3FM		1.8
06BEEG3FM		0.8

### MINIMUM INSERTION LOSS IN dB

COMMON MODE (L-G) IN 50 OHM SYSTEM						
CURRENT RATING	FREQUENCY-MHz					
	.15	.50	1.0	5.0	10	30
2A	20	30	30	25	20	8
4A	15	25	25	25	20	10
6A	10	15	20	20	20	15
DIFFERENTIAL MODE (L-L) IN 50 OHM SYSTEM						
2A	5	15	25	40	45	30
4A	5	10	21	40	40	35
6A	4	10	15	35	30	35

### MECHANICAL CONSTRUCTION



BEEG3FM

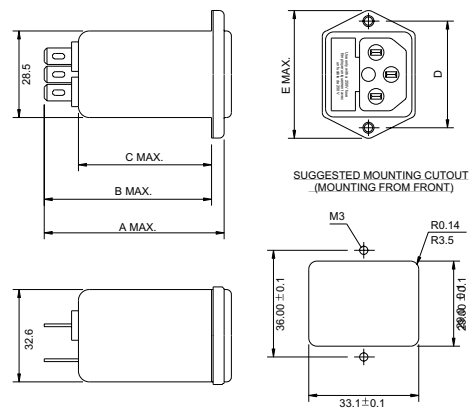
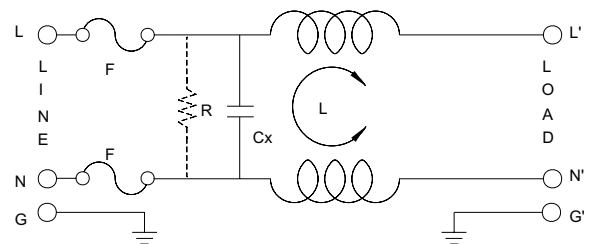
### SPECIFICATIONS

1. Maximum leakage current each line-to-ground @ 115VAC 60Hz: 2uA @ 250VAC 50Hz: 5uA
2. Hipot rating (one minute) line-to-ground: 2250VDC line-to-line: 1450VDC
3. Operating frequency: 50/60Hz
4. Rated voltage: 115/250VAC

### SERIES DIMENSIONS

DELTA PART NO.	STYLE	DIMENSIONS IN INCHES/mm				
		A	B	C	D	E
02BEEG3FM	EG3FM					
04BEEG3FM	EG3FM	2.25 57.0	2.09 53.0	1.66 42.0	1.42 36.0	1.74 44.0
06BEEG3FM	EG3FM					

### ELECTRICAL SCHEMATIC



UNIT: INCH  
mm

## X-ON Electronics

Largest Supplier of Electrical and Electronic Components

*Click to view similar products for [AC Power Entry Modules](#) category:*

*Click to view products by [Delta](#) manufacturer:*

Other Similar products are found below :

[0098.0050](#) [6167.0002](#) [6609100-2](#) [7-6609955-2](#) [FKI2-50-6/M5](#) [FN361-6-06](#) [FN389-4-22](#) [FN9226B-6-02](#) [FN9233S1-10-06](#) [FN9233S1-8-06](#)  
[FN9233S1B-8-06](#) [FN9233S1R-1-06](#) [FN9233S1R-12-06](#) [FN9233SB-1-06](#) [FN9233SB-12-06](#) [FN9233SB-8-06](#) [FN9233SR-10-06](#) [FN9244B-15-06HI](#) [FN9244EB-3-06](#) [FN9244EB-8-06](#) [FN9244ER-15-06](#) [FN9244ER-8-06](#) [FN9244ES1-8-06](#) [FN9244ESB-8-06](#) [FN9244R-12-06](#)  
[FN9244S1-12-06](#) [FN9244S1R-3-06](#) [FN9244SB-8-06](#) [FN9244SR-6-06](#) [FN9244U-3-06](#) [FN9244U-8-06](#) [8-6609940-2](#) [PE00SSSXB](#) [Fuse-H-EUR-1](#) [Fuse-H-USA-1](#) [PM00XD000](#) [A-0701-HT-H](#) [15EJMS8](#) [1-6609941-2](#) [200JM6-2](#) [CA121003-6](#) [SK-1015\(F1-5\)](#) [161-R3015-E](#) [1-6609153-2](#) [FN323-1-05](#) [FN9233B-8-06](#) [FN9233EB-1-06](#) [FN9233ES1R-10-06](#) [FN9233R-12-06](#) [FN9233S-10-06](#)