

INTRODUCTIONS

1. Power module incorporates an IEC connector, a fuse holder with optional power on/off switch and voltage selector switch, plus an EMI filter all-in-one single, easy-to-install unit.
2. Fuse holder designed for one IEC 5x20mm fuse. Safety interlock prevents fuse removal with line plug inserted.
3. AE1/3/4/5: UL, CSA
AE2: UL, CSA, VDE

SPECIFICATIONS

1. Maximum leakage current each
line-to-ground @ 115VAC 60Hz: 0.25mA
@ 250VAC 50Hz: 0.45mA
2. Hipot rating (one minute)
line-to-ground: 2250VDC
line-to-line: 1450VDC
3. Operating frequency: 50/60Hz
4. Rated voltage: 115/250VAC

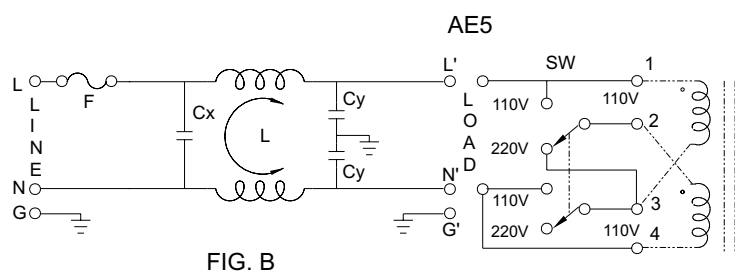
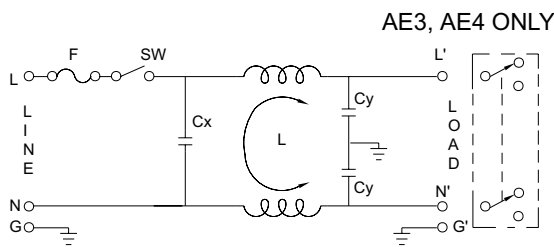
MINIMUM INSERTION LOSS IN dB

COMMON MODE (L-G) IN 50 OHM SYSTEM						
CURRENT RATING	FREQUENCY-MHz					
	.15	.50	1.0	5.0	10	30
3A	5	15	20	25	25	30
6A	10	20	22	35	38	45
10A	5	15	20	37	45	50

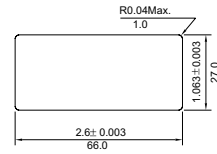
TYPE & RATED CURRENT

DELTA PART NO.	03AE1 06AE1 10AE1	03AE2 06AE2 10AE2	03AE3 06AE3	03AE4 06AE4	03AE5 06AE5
IEC CONNECTOR	△	△	△	△	△
FUSE HOLDER	△	△	△	△	△
POWER SWITCH	-	SP ¹	SP ¹	-	-
VOLTAGE SELECTOR SW	-	-	REAR ²	REAR ²	FRONT ³
ELECTRICAL SCHEMATIC	FIG. A	FIG. A	FIG. A	FIG. A	FIG. B

ELECTRICAL SCHEMATIC



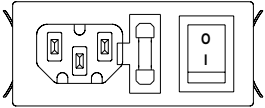
- AE1, AE4 without power SW
L1: 2.6mH (3A)
L1: 0.5mH (6A)
L1: 0.2mH (10A)
Cx: 0.015uF
Cy: 3300pF



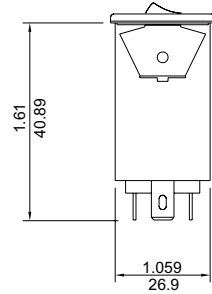
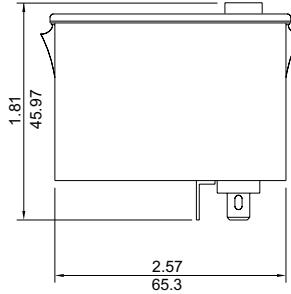
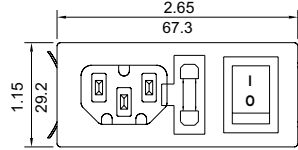
- Suggested thickness of mounting panel is from 0.04 to 0.07 inch
- Suggest mounting cutout

MECHANICAL CONSTRUCTION

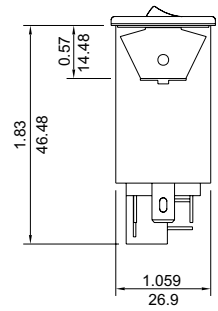
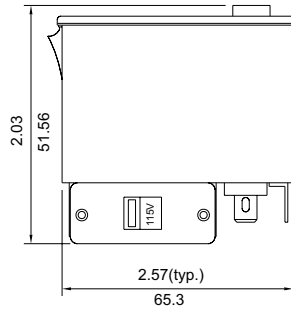
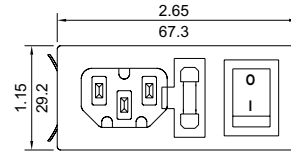
* Optional ON/OFF switch direction



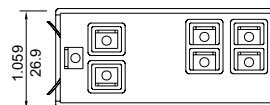
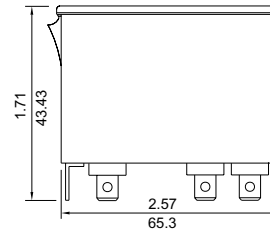
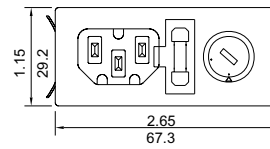
AE1 (without power switch)
AE2



AE3
AE4 (without power switch)



AE5



UNIT: $\frac{\text{INCH}}{\text{mm}}$

X-ON Electronics

Largest Supplier of Electrical and Electronic Components

Click to view similar products for [Power Line Filters](#) category:

Click to view products by [Delta](#) manufacturer:

Other Similar products are found below :

[5B1](#) [6609019-3](#) [6609026-5](#) [6609030-6](#) [6609063-2](#) [6609973-2](#) [7-1609090-5](#) [F1500CA06](#) [F7382Z](#) [F7863Z](#) [FAHAV3100ZC000](#) [806276](#)
[FN2020B-1-06](#) [FN2080B-10-06](#) [FN2090A-1-06](#) [FN2410H-32-33](#) [FN2410H-80-34](#) [FN2412H-16-44](#) [FN420-1-13](#) [FP144](#) [8-6609089-0](#) [12-](#)
[MMB-030-11-D](#) [15811T200](#) [B84144A0050R120](#) [B84144A90R120](#) [20B1](#) [RSEL-2001A](#) [2B1](#) [1-6609070-1](#) [F1500CA10](#) [1B1](#) [FN2020A-10-](#)
[06](#) [FN2020B-3-06](#) [FN2060A-3-06](#) [FN2070A-16-06](#) [FN2070B-16-08](#) [FN2090B-12-06](#) [FN2090Z-1-06](#) [FN2410H-25-33](#) [FN2410H-60-34](#)
[FN2410H-8-44](#) [FN2412H-25-33](#) [FN2412H-8-44](#) [FN610R-3-06](#) [20EHZ7](#) [20K1](#) [30B6](#) [30BCF10R](#) [3K1](#) [4-6609089-0](#)