



GE SERIES

# SNAP-IN MOUNTING HIGH PERFORMANCE IEC CONNECTOR FILTERS



## INTRODUCTIONS

1. Snap-in mounting type to reduce labor cost. Compact and reliable at low cost.
2. Bleeder resistor can be added with suffix "-R" on part numbers, except G3H,G3V,W3V,G3J,W3J,types.
3. Optional side snap-in mounting clip type with suffix (H) on part numbers.
4. All part numbers are UL recognized, CSA certified and VDE approved.
5. With optional Y-Cap from 100pF to 3300pF.

## COMPONENTS

| PART NO.           | Cx (uF) | L (mH) | Cy (pF) | R (Ω) |
|--------------------|---------|--------|---------|-------|
| 01GENG3E/W3E/-R    | 0.1     | 6.5    | 2200    | 1M    |
| 03GENG3E/W3E/-R    |         | 2.5    |         |       |
| 03GENG3U/-R        |         | 2.5    |         |       |
| •03GENW3ES/-R      |         | 2.5    |         |       |
| •03GENG3Q/W3Q/-R   |         | 4      |         |       |
| 06GENG3E/W3E/-R    |         | 0.8    |         |       |
| 06GENG3U/-R        |         | 0.8    |         |       |
| ••06GENG3Q/W3Q/-R  |         | 1.5    |         |       |
| 06GENW3ES/-R       |         | 0.8    |         |       |
| 10GENG3E/W3E/-R    |         | 0.2    |         |       |
| •••10GENG3C/W3C/-R |         | 0.4    |         |       |
| *10GENG3Q/W3Q/-R   |         | 0.3    |         |       |
| 10GENG3U/-R        |         | 0.3    |         |       |
| 10GENW3ES/-R       |         | 0.2    |         |       |
| **15GENG3E/W3E/-R  |         | 0.2    |         |       |
| ***20GENG3E/W3E/-R |         | 0.3    |         |       |

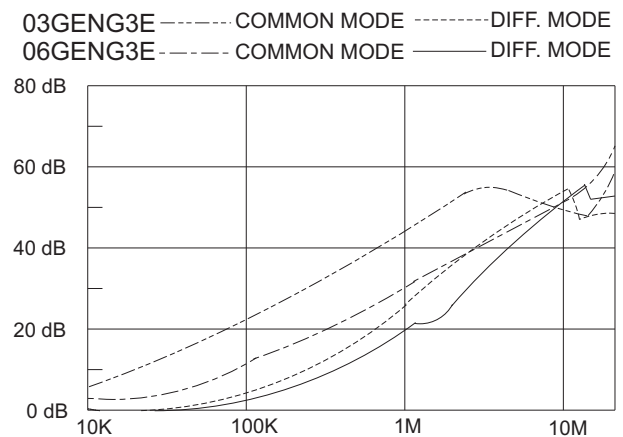
- UL, CSA approved to 4A 115/250V
- UL, CSA approved to 8A 115/250V
- VDE approved to 8A/250V

- \* UL, CSA approved to 13A 115/250V
- \*\* VDE approved to 10A/250V
- \*\*\* VDE approved to 16A/250V

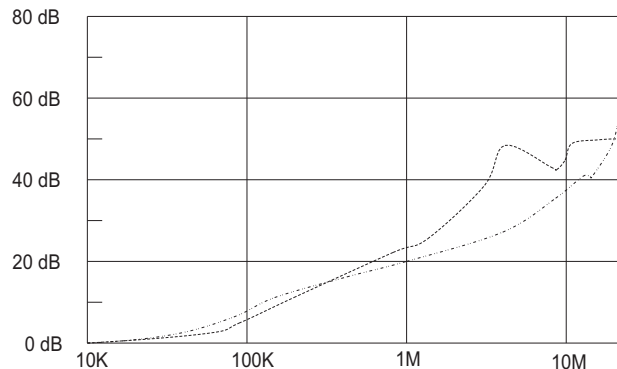
## SPECIFICATIONS

1. Maximum leakage current each line-to-ground @ 115VAC 60Hz: 0.2mA @ 250VAC 50Hz: 0.4mA
2. Hipot rating (one minute) line-to-ground: 2250VDC line-to-line: 1450VDC
3. Operating frequency: 50/60Hz
4. Rated voltage: 115/250VAC

## INSERTION LOSS (TYPICAL)



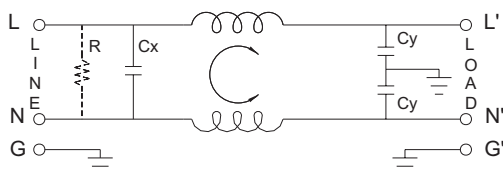
20GENG3E ----- COMMON MODE ----- DIFF. MODE



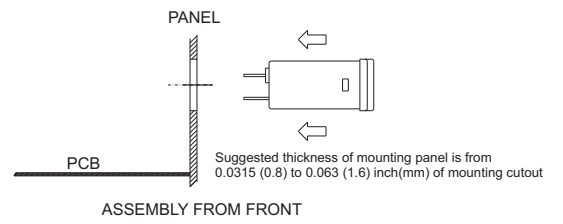
## MINIMUM INSERTION LOSS IN dB

| COMMON MODE (L-G) IN 50 OHM SYSTEM |               |     |     |     |    |    |
|------------------------------------|---------------|-----|-----|-----|----|----|
| CURRENT RATING                     | FREQUENCY-MHz |     |     |     |    |    |
|                                    | .15           | .50 | 1.0 | 5.0 | 10 | 30 |
| 1A                                 | 28            | 35  | 38  | 38  | 40 | 40 |
| 3A                                 | 20            | 25  | 30  | 38  | 40 | 40 |
| 6A                                 | 12            | 18  | 24  | 35  | 40 | 40 |
| 6A (G3Q)                           | 15            | 20  | 24  | 35  | 40 | 55 |
| 10A                                | 4             | 10  | 13  | 28  | 35 | 40 |
| 10A (G3C)                          | 10            | 15  | 15  | 25  | 30 | 35 |
| 10A (G3Q)                          | 10            | 12  | 15  | 30  | 32 | 45 |
| 15A                                | 4             | 10  | 13  | 28  | 35 | 40 |
| 20A                                | 8             | 10  | 15  | 25  | 30 | 35 |

## ELECTRICAL SCHEMATIC



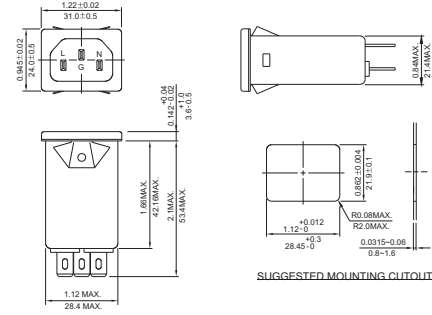
R: 1MΩ/-R ONLY



## MECHANICAL CONSTRUCTION



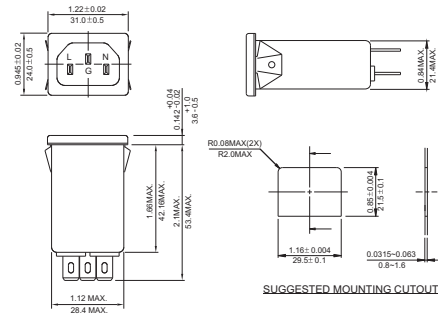
NG3E, NG3C, NG3Q (Optional wire type)



GENG3E



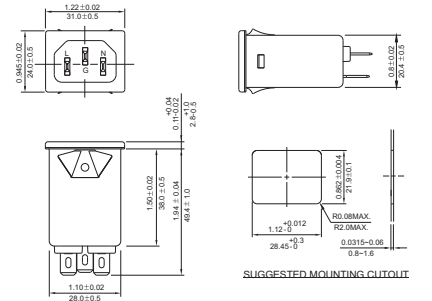
NG3E(H), NG3C(H), NG3Q(H) (Optional wire type)



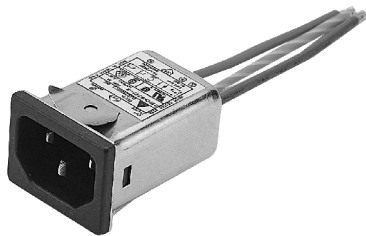
GENG3E(H)



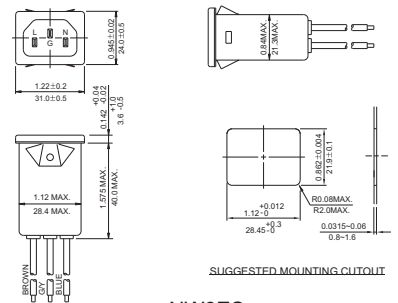
NG3U (With Compact Size)



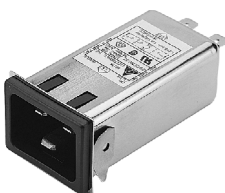
NG3U



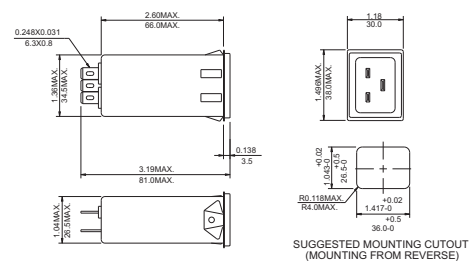
NW3ES



NW3ES



20GENG3E (Optional wire type)



WIRE LENGTH : 4.0" MIN.

UNIT: INCH  
mm

## X-ON Electronics

Largest Supplier of Electrical and Electronic Components

*Click to view similar products for [Delta manufacturer](#):*

Other Similar products are found below :

[MKEL-DRB](#) [PFB1224UHE-T50F](#) [PL01S2412A](#) [PMB-24V50W1AA](#) [PS75-12VDC-PULL-CONT](#) [DOP-EXI014RAE](#) [DRP048V240W1BN](#)  
[DSVP10-VITON-DIAPHRAGM](#) [DTB4824LV](#) [DTB4848LV](#) [DTB4896CR](#) [DTB4896VRE](#) [DTB9696CVE](#) [DTB9696LVE](#) [DVP01PU-S](#)  
[DVP06XA-S](#) [DVP08SN11T](#) [DVP08SP11R](#) [DVDPNET-SL](#) [DVPDT01-S](#) [EFB0412HHA](#) [166-11-PIN-SQ.-BASE-SOCKET](#) [BUE-20015](#)  
[IFD8520](#) [1-NPO/603-1339](#) [20114-80](#) [20310-80](#) [20982-82](#) [900-\(1C\)-30A-12VDC](#) [166-DPDT-13A-6VDC](#) [ADP485-01](#) [AFB0412MA](#)  
[FFB1212VHE-F00](#) [1-NPO/603-1326](#) [20243-81](#) [PFB0624SHE](#) [23595-73](#) [PMC-12V150W1BA](#) [PMT-48V350W1AR](#) [CME-COP01](#) [31000-82](#)  
[310-4PDT-10A-110VAC](#) [32003-81](#) [32007-82](#) [32007-84](#) [320-4PDT-3A-110VAC](#) [320-4PDT-3A-24VAC](#) [TP05G-BT2](#) [TP-PCC](#) [31003-82](#)