

## INTRODUCTIONS

1. Power module incorporates an IEC connector, a fuse holder with optional power on/off switch and voltage selector switch, plus an EMI filter all-in-one single, easy-to-install unit.
2. Fuse holder designed for one IEC 5x20mm fuse. Safety interlock prevents fuse removal with line plug inserted.
3. AE1/3/4/5: UL, CSA  
AE2: UL, CSA, VDE

## SPECIFICATIONS

1. Maximum leakage current each  
line-to-ground @ 115VAC 60Hz: 0.25mA  
@ 250VAC 50Hz: 0.45mA
2. Hipot rating (one minute)  
line-to-ground: 2250VDC  
line-to-line: 1450VDC
3. Operating frequency: 50/60Hz
4. Rated voltage: 115/250VAC

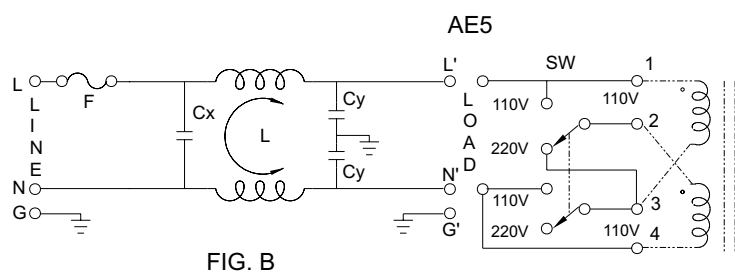
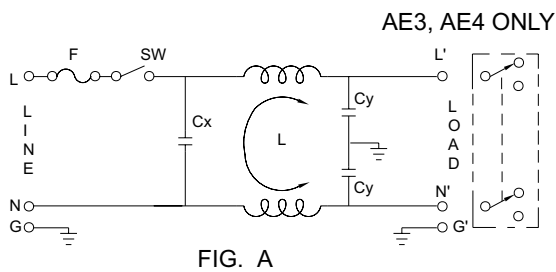
## MINIMUM INSERTION LOSS IN dB

COMMON MODE (L-G) IN 50 OHM SYSTEM						
CURRENT RATING	FREQUENCY-MHz					
	.15	.50	1.0	5.0	10	30
3A	5	15	20	25	25	30
6A	10	20	22	35	38	45
10A	5	15	20	37	45	50

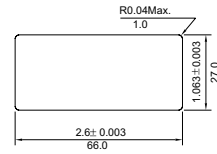
## TYPE & RATED CURRENT

DELTA PART NO.	03AE1 06AE1 10AE1	03AE2 06AE2 10AE2	03AE3 06AE3	03AE4 06AE4	03AE5 06AE5
IEC CONNECTOR	△	△	△	△	△
FUSE HOLDER	△	△	△	△	△
POWER SWITCH	-	SP <sup>1</sup>	SP <sup>1</sup>	-	-
VOLTAGE SELECTOR SW	-	-	REAR <sup>2</sup>	REAR <sup>2</sup>	FRONT <sup>3</sup>
ELECTRICAL SCHEMATIC	FIG. A	FIG. A	FIG. A	FIG. A	FIG. B

## ELECTRICAL SCHEMATIC



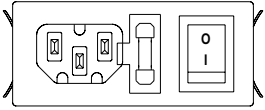
- AE1, AE4 without power SW  
L1: 2.6mH (3A)  
L1: 0.5mH (6A)  
L1: 0.2mH (10A)  
Cx: 0.015uF  
Cy: 3300pF



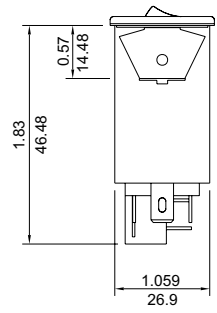
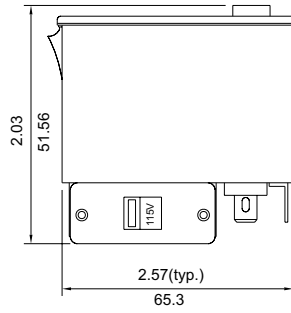
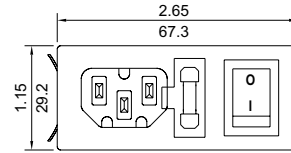
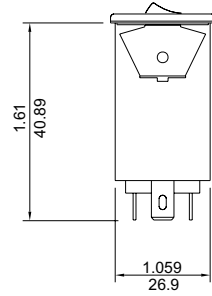
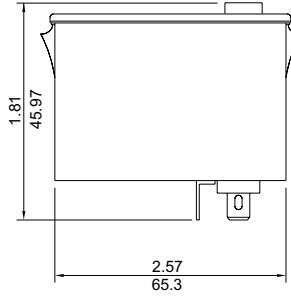
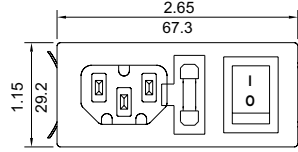
- Suggested thickness of mounting panel is from 0.04 to 0.07 inch
- Suggest mounting cutout

## MECHANICAL CONSTRUCTION

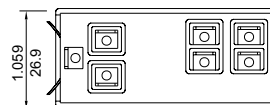
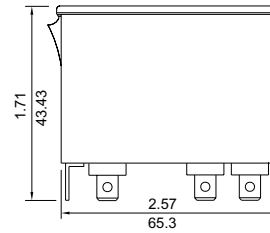
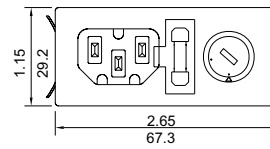
\* Optional ON/OFF switch direction



AE1 (without power switch)  
AE2



AE3  
AE4 (without power switch)



AE5

UNIT:  $\frac{\text{INCH}}{\text{mm}}$

## X-ON Electronics

Largest Supplier of Electrical and Electronic Components

*Click to view similar products for [Power Line Filters](#) category:*

*Click to view products by [Delta](#) manufacturer:*

Other Similar products are found below :

[6609019-3](#) [6609026-5](#) [6609030-6](#) [6609973-2](#) [D30A](#) [7-1609090-5](#) [F2810](#) [F4456A](#) [F7382Z](#) [F7863Z](#) [FAHAV3100ZC000](#) [806276](#) [FN2020B-1-06](#) [FN2080B-10-06](#) [FN2410H-32-33](#) [FN2410H-80-34](#) [FP144](#) [FS4153-20-06](#) [FS4353-500-99](#) [12-MMB-030-11-D](#) [DB4-393](#) [15811T200](#) [20B1](#) [LC630](#) [2B1](#) [1609080-2](#) [1609993-8](#) [1-6609070-1](#) [F1100AA02](#) [F1150CC10](#) [F1500CA10](#) [F1500CA15](#) [F4041Z](#) [F7585E](#) [1B1](#) [FN2070A-16-06](#) [FN2090A-20-06](#) [FN2090B-12-06](#) [FN2090Z-1-06](#) [FN2410H-25-33](#) [FN2410H-60-34](#) [FN2410H-8-44](#) [FN2412H-8-44](#) [FN323B-6-01](#) [FN610R-3-06](#) [20EHQ7](#) [20EHZ7](#) [20K1](#) [30B6](#) [3K1](#)