

EK SERIES POWER ENTRY MODULE FILTERS



INTRODUCTIONS

1. EK Series filters are for UL 544 & UL 2601 health care equipment.
2. All part numbers are UL recognized, CSA certified and VDE approved.

COMPONENTS

PART NO.	L (mH)	C1 (uF)	C2 (uF)	R (MΩ)
03EK3M/AM	8	0.22	0.1	1
03EK3SM/AM				
03EK4M/AM				
06EK3M/AM	2.5	0.22	0.1	1
06EK3SM/AM				
06EK4M/AM				
10EK3M/AM	1.6	0.22	0.1	1
10EK3SM/AM				
10EK4M/AM				

Lg: 400uH (EK3AM, EK3SAM only)

MINIMUM INSERTION LOSS IN dB

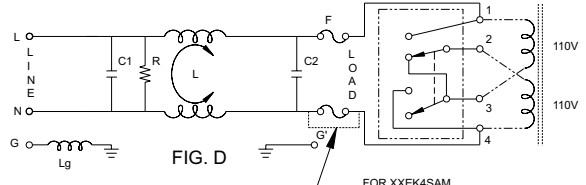
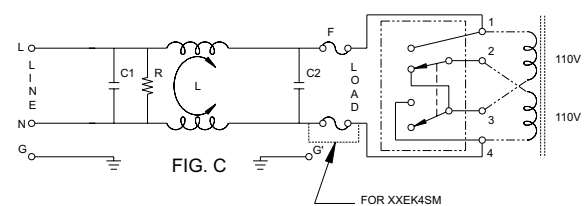
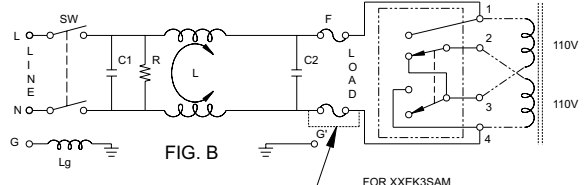
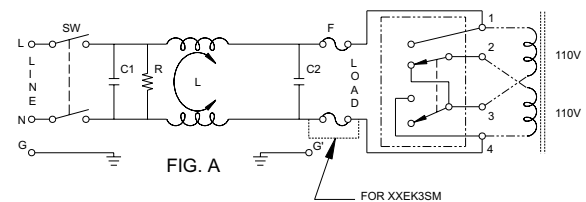
COMMON MODE (L-G) IN 50 OHM SYSTEM							
CURRENT RATING	FREQUENCY-MHz						
	0.05	0.10	0.15	0.50	1.0	5.0	10 30
3A (M)	22	27	32	42	36	20	15 6
6A (M)	12	18	20	25	25	20	13 6
*10A (M)	8	10	14	20	25	20	17 10
3A (AM) (SAM)	22	27	32	30	36	22	18 6
6A (AM) (SAM)	12	18	20	25	25	20	13 6
*10A (AM) (SAM)	8	14	24	20	25	20	17 12
DIFFERENTIAL MODE (L-L) IN 50 OHM SYSTEM							
3A (M)	2	4	18	48	55	50	50 35
6A (M)	4	4	12	38	50	50	50 25
*10A (M)	4	6	6	30	45	50	50 35
3A (AM) (SAM)	35	35	45	50	55	40	25 10
6A (AM) (SAM)	25	45	25	40	50	40	25 10
*10A (AM) (SAM)	20	28	38	45	50	40	25 13

*CSA approved 6A at 125/250VAC. VDE approved 6A at 250VAC.

SPECIFICATIONS

1. Maximum leakage current each
line-to-ground: @ 115VAC 60Hz: 2.0uA
@ 250VAC 50Hz: 5.0uA
2. Hipot rating (one minute)
line-to-ground: 2250VDC
line-to-line: 1450VDC
3. Operating frequency: 50/60Hz
4. Rated voltage: 115/250VAC

ELECTRICAL SCHEMATIC



DELTA PART NO.	03EK3M 06EK3M 10EK3M	03EK3AM 06EK3AM 10EK3AM	03EK3SM 06EK3SM 10EK3SM	03EK3SAM 06EK3SAM 10EK3SAM	03EK4M 06EK4M 10EK4M	03EK4AM 06EK4AM 10EK4AM	03EK4SM 06EK4SM 10EK4SM	03EK4SAM 06EK4SAM 10EK4SAM
* FUSE	DOUBLE	DOUBLE	SINGLE	SINGLE	DOUBLE	DOUBLE	SINGLE	SINGLE
IEC CONNECTOR	Δ	Δ	Δ	Δ	Δ	Δ	Δ	Δ
**DOUBLE-POLE POWER SWITCH	Δ	Δ	Δ	Δ	—	—	—	—
VOLTAGE SELECTOR SW	Δ	Δ	Δ	Δ	Δ	Δ	Δ	Δ
ELECTRICAL SCHEMATIC	FIG. A	FIG. B	FIG. A	FIG. B	FIG. C	FIG. D	FIG. C	FIG. D

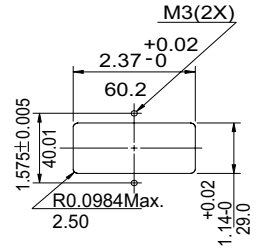
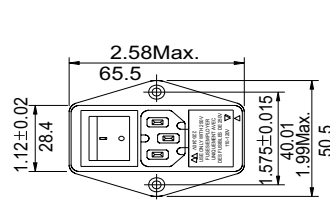
* UL, CSA & VDE approved
Current rating: UL-10A both at 125VAC & 250VAC.
CSA & VDE-6A at 250VAC.

** UL, CSA & VDE approved
Current rating: UL & CSA-10A both at 125VAC & 250VAC.
VDE-10A at 250VAC.
Electrical lifetime: 10,000 cycles.
Maximum inrush current: 51A.

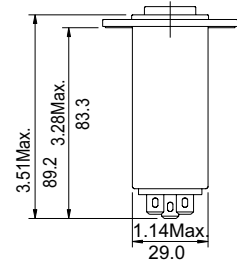
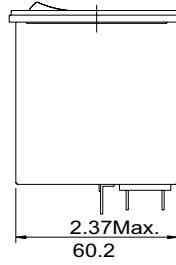
MECHANICAL CONSTRUCTION



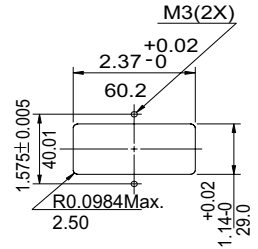
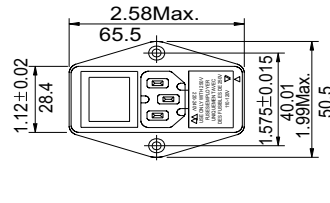
EK3M/AM/SM/SAM



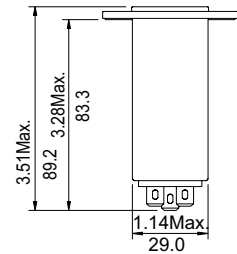
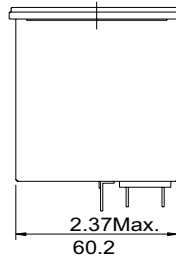
SUGGESTED MOUNTING CUTOUT



EK4M/AM/SM/SAM



SUGGESTED MOUNTING CUTOUT



UNIT: INCH
mm

X-ON Electronics

Largest Supplier of Electrical and Electronic Components

Click to view similar products for [AC Power Entry Modules](#) category:

Click to view products by [Delta](#) manufacturer:

Other Similar products are found below :

[0098.0050](#) [6167.0002](#) [6609100-2](#) [7-6609955-2](#) [FKI2-50-6/M5](#) [FN361-6-06](#) [FN389-4-22](#) [FN9226B-6-02](#) [FN9233S1-10-06](#) [FN9233S1-8-06](#)
[FN9233S1B-8-06](#) [FN9233S1R-1-06](#) [FN9233S1R-12-06](#) [FN9233SB-1-06](#) [FN9233SB-12-06](#) [FN9233SB-8-06](#) [FN9233SR-10-06](#) [FN9244B-15-06HI](#) [FN9244EB-3-06](#) [FN9244EB-8-06](#) [FN9244ER-15-06](#) [FN9244ER-8-06](#) [FN9244ES1-8-06](#) [FN9244ESB-8-06](#) [FN9244R-12-06](#)
[FN9244S1-12-06](#) [FN9244S1R-3-06](#) [FN9244SB-8-06](#) [FN9244SR-6-06](#) [FN9244U-3-06](#) [FN9244U-8-06](#) [8-6609940-2](#) [PE00SSSXB](#) [Fuse-H-EUR-1](#) [Fuse-H-USA-1](#) [PM00XD000](#) [A-0701-HT-H](#) [15EJMS8](#) [1-6609941-2](#) [200JM6-2](#) [CA121003-6](#) [SK-1015\(F1-5\)](#) [161-R3015-E](#) [1-6609153-2](#) [FN323-1-05](#) [FN9233B-8-06](#) [FN9233EB-1-06](#) [FN9233ES1R-10-06](#) [FN9233R-12-06](#) [FN9233S-10-06](#)