



DW SERIES

MULTI-PURPOSE POWER LINE FILTERS



INTRODUCTION

Two-stage filters providing excellent suppression at high frequency.

COMPONENTS

PART NO.	C1 (uF)	C2 (uF)	L1 (mH)	L2 (uH)	Cy (pF)	R (Ω)
03DWCG5	0.22	0.22	1.0	30	3300	330K
06DWCG5			1.7	70		
10DWCG5			1.2	40		
20DWGG5		0.47	1.73	30		

MINIMUM INSERTION LOSS IN dB

COMMON MODE (L-G) IN 50 OHM SYSTEM						
CURRENT RATING	FREQUENCY-MHz					
	.15	.50	1.0	5.0	10	30
3A	12	20	30	60	60	45
6A	25	30	45	55	55	45
• 10A	15	20	30	60	55	45
• 20A	20	25	30	55	55	45
DIFFERENTIAL MODE (L-L) IN 50 OHM SYSTEM						
3A	25	50	60	45	50	50
6A	25	35	50	50	50	45
• 10A	25	50	50	45	45	45
• 20A	25	55	55	55	50	45

• VDE approved in 8A
• VDE approved in 16A

SPECIFICATIONS

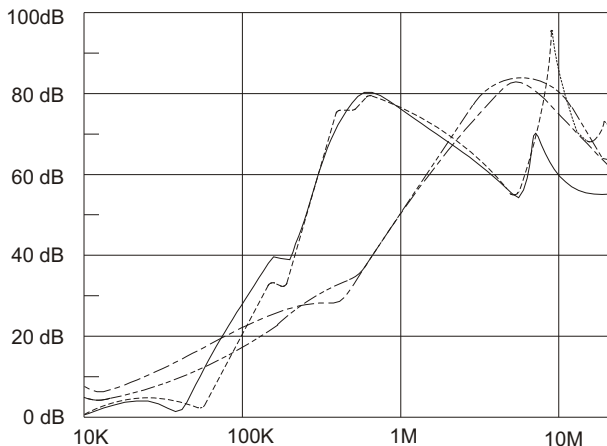
1. Maximum leakage current each line-to-ground: @ 115VAC 60Hz: 0.50mA
@ 250VAC 50Hz: 1.00mA
2. Hipot rating (one minute) line-to-ground: 2250VDC
line-to-line: 1450VDC
3. Operating frequency: 50/60Hz
4. Rated voltage: 115/250VAC

SERIES DIMENSIONS

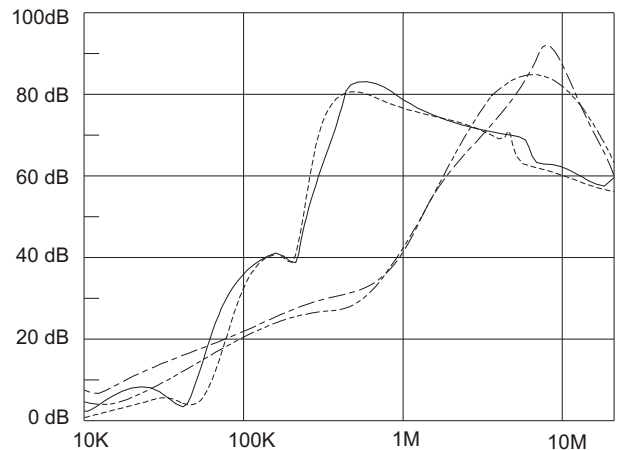
PART NO.	DIMENSIONS IN INCHES/mm				
	A	B	C	D	E
03DWCG5	3.25	1.90	1.15	2.38	2.77
	82.5	48.3	29.2	60.5	70.4
06DWCG5	3.75	2.06	1.54	2.94	3.34
10DWCG5	95.2	52.3		74.7	84.8
20DWGG5	5.25	3.40	39.1	3.75	4.14
	130.5	86.4	95.3	95.3	105.1

INSERTION LOSS (TYPICAL)

03DWCG5 - - - - - COMMON MODE - - - - - DIFF. MODE
06DWCG5 - - - - - COMMON MODE - - - - - DIFF. MODE



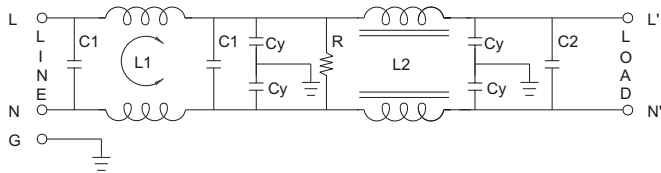
10DWCG5 - - - - - COMMON MODE - - - - - DIFF. MODE
20DWGG5 - - - - - COMMON MODE - - - - - DIFF. MODE



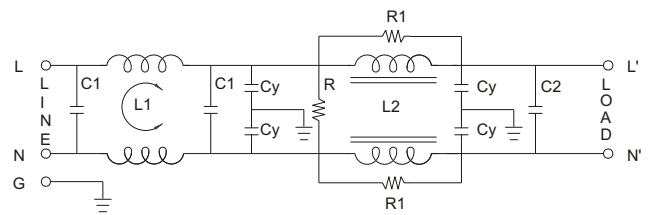
GENERAL PURPOSE TWO-STAGE FILTERS

ELECTRICAL SCHEMATIC

3A. 6A. 10A.



20A.

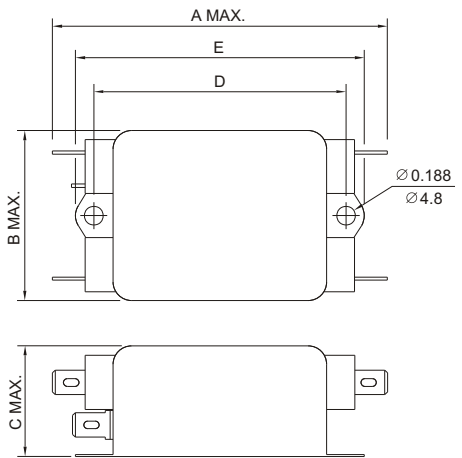


R1=330(Ohm)

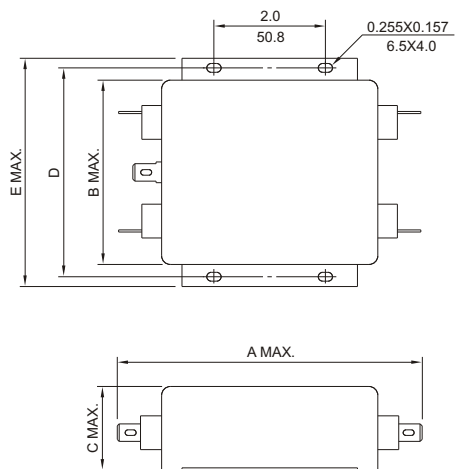
MECHANICAL CONSTRUCTION



CG5



GG5



UNIT: $\frac{\text{INCH}}{\text{mm}}$

X-ON Electronics

Largest Supplier of Electrical and Electronic Components

Click to view similar products for [Power Line Filters](#) category:

Click to view products by [Delta](#) manufacturer:

Other Similar products are found below :

[6609019-3](#) [6609026-5](#) [6609030-6](#) [6609973-2](#) [D30A](#) [7-1609090-5](#) [F2810](#) [F4456A](#) [F7382Z](#) [F7863Z](#) [FAHAV3100ZC000](#) [806276](#) [FN2020B-1-06](#) [FN2080B-10-06](#) [FN2410H-32-33](#) [FN2410H-80-34](#) [FP144](#) [FS4153-20-06](#) [FS4353-500-99](#) [12-MMB-030-11-D](#) [DB4-393](#) [15811T200](#) [20B1](#) [LC630](#) [2B1](#) [1609080-2](#) [1609993-8](#) [1-6609070-1](#) [F1100AA02](#) [F1150CC10](#) [F1500CA10](#) [F1500CA15](#) [F4041Z](#) [F7585E](#) [1B1](#) [FN2070A-16-06](#) [FN2090A-20-06](#) [FN2090B-12-06](#) [FN2090Z-1-06](#) [FN2410H-25-33](#) [FN2410H-60-34](#) [FN2410H-8-44](#) [FN2412H-8-44](#) [FN323B-6-01](#) [FN3258H-130-35](#) [FN610R-3-06](#) [20EHQ7](#) [20EHZ7](#) [20K1](#) [30B6](#)