



TDS SERIES

GENERAL 3-PHASE 3-WIRE FILTERS

COMPONENTS

| PART NO. | Leakage current max mA | L (mH) | L1 (mH) | Cx (uF) | Cy (nF) | R (KΩ) |
|------------------------|------------------------|--------|----------|----------|---------|---------|
| •08TDS4W4 •24TDS4W4 | 6.5 | 4.2 | 1.5 | 1 | 15 | 470 |
| | | 1 | 0.5 | | | |
| PART NO. | Leakage current max mA | L (mH) | ΣCx (uF) | ΣCy (uF) | R1 (MΩ) | R2 (MΩ) |
| 08TDS8 | 14.5 | 7.6 | 1.6 | 0.17 | 2 | - |
| 16TDS8 | | 5.2 | 3.4 | | | |
| 36TDS8 | 160 | 1.3 | 4.4 | 1.8 | | |

• UL, VDE approved

MINIMUM INSERTION LOSS IN dB

| COMMON MODE (L-G) IN 50 OHM SYSTEM | | | | | | | |
|--|----------------|-----------------|-----|-----|-----|----|----|
| TYPE | CURRENT RATING | FREQUENCY - MHz | | | | | |
| | | .15 | .50 | 1.0 | 5.0 | 10 | 30 |
| 08TDS4W4 | 8A | 70 | 65 | 60 | 50 | 40 | 30 |
| 24TDS4W4 | 24A | 40 | 65 | 70 | 70 | 60 | 35 |
| 08TDS8 | 8A | 50 | 65 | 65 | 55 | 50 | 50 |
| 16TDS8 | 16A | 45 | 70 | 65 | 55 | 50 | 50 |
| 36TDS8 | 36A | 60 | 70 | 65 | 55 | 50 | 55 |
| DIFFERENTIAL MODE (L-L) IN 50 OHM SYSTEM | | | | | | | |
| 08TDS4W4 | 8A | 35 | 65 | 70 | 55 | 50 | 35 |
| 24TDS4W4 | 24A | 15 | 60 | 65 | 65 | 60 | 40 |
| 08TDS8 | 8A | 50 | 65 | 60 | 55 | 50 | 50 |
| 16TDS8 | 16A | 50 | 70 | 65 | 55 | 55 | 50 |
| 36TDS8 | 36A | 50 | 70 | 65 | 55 | 50 | 45 |

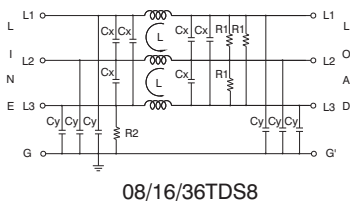
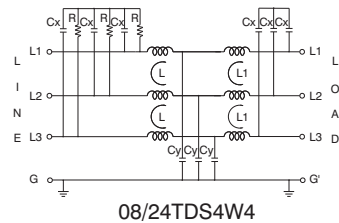
SERIES DIMENSIONS

| | 08TDS4W4 | 24TDS4W4 | 08TDS8 | 16TDS8 | 36TDS8 |
|---|----------|----------|--------|--------|--------|
| A | 145 | 180 | | 200 | |
| B | 135 | | 115 | | |
| C | 75 | 115 | | 150 | |
| D | 55 | 100 | | 136 | |
| E | 45 | 60 | | 65 | |
| F | 16 | | 18 | | |
| H | - | | 6.4 | | |
| I | | 85 | | 120 | |
| J | M4X0.7 | | M6X1.0 | | |
| K | 15 | | | 20 | |
| L | 300 | | | - | |
| M | 6 | | | - | |
| N | 7X5.3 | | | - | |
| T | | | 0.8 | | |
| W | AWG18 | AWG16 | | - | |

INTRODUCTIONS

1. Applications: Electric equipment, UPS, machine tool, copy machine, automation equipment, robot, AC motor drive
2. Voltage rating: 480VAC
3. Operating frequency: 50/60Hz

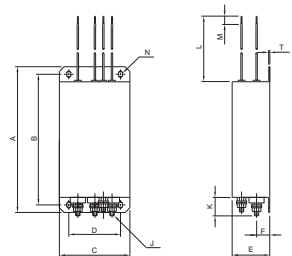
ELECTRICAL SCHEMATIC



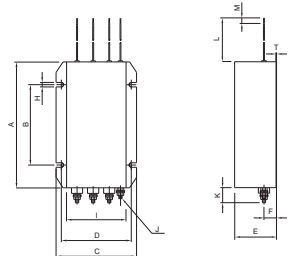
MECHANICAL CONSTRUCTION



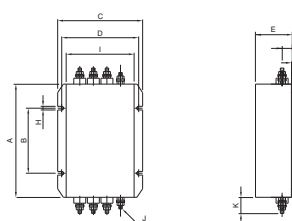
08TDS4W4



24TDS4W4



08/16/36TDS8



THREE-PHASE FILTERS

X-ON Electronics

Largest Supplier of Electrical and Electronic Components

Click to view similar products for [Power Line Filters](#) category:

Click to view products by [Delta](#) manufacturer:

Other Similar products are found below :

[6609019-3](#) [6609026-5](#) [6609030-6](#) [6609973-2](#) [D30A](#) [7-1609090-5](#) [F2810](#) [F4456A](#) [F7382Z](#) [F7863Z](#) [FAHAV3100ZC000](#) [806276](#) [FN2020B-1-06](#) [FN2080B-10-06](#) [FN2410H-32-33](#) [FN2410H-80-34](#) [FP144](#) [FS4153-20-06](#) [FS4353-500-99](#) [12-MMB-030-11-D](#) [DB4-393](#) [15811T200](#) [20B1](#) [LC630](#) [2B1](#) [1609080-2](#) [1609993-8](#) [1-6609070-1](#) [F1100AA02](#) [F1150CC10](#) [F1500CA10](#) [F1500CA15](#) [F4041Z](#) [F7585E](#) [1B1](#) [FN2070A-16-06](#) [FN2090A-20-06](#) [FN2090B-12-06](#) [FN2090Z-1-06](#) [FN2410H-25-33](#) [FN2410H-60-34](#) [FN2410H-8-44](#) [FN2412H-8-44](#) [FN323B-6-01](#) [FN610R-3-06](#) [20EHQ7](#) [20EHZ7](#) [20K1](#) [30B6](#) [3K1](#)