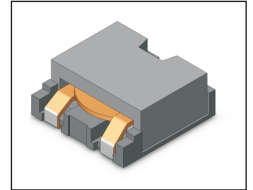


SMT Power Inductor

HMU1345, 1350, 1356, 1358, 1360M & 1362M Type

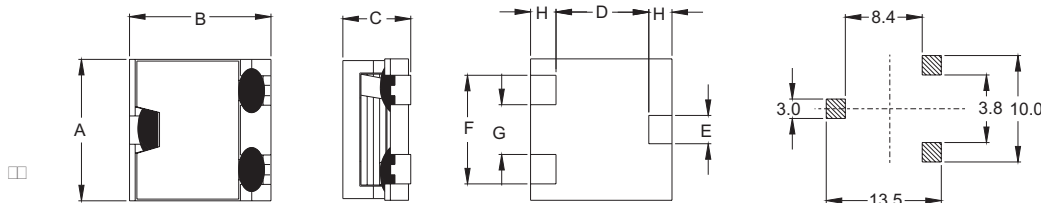
Features

- RoHS compliant.
- Low profile, SMD type.
- High current.
- Magnetic shielded.
- High energy storage and low DCR.
- Provided with embossed carrier tape packing.
- Ideal for power source circuits, DC-DC converter, DC-AC inverters inductor applications.
- In addition to the standard versions shown here, customized inductors are available to meet your exact requirements.



Mechanical Dimension :

RECOMMENDED PAD PATTERNS



UNIT : mm/inch

A	12.60±0.4 / 0.496±0.016
B	12.70±0.3 / 0.500±0.012
D	8.95 / 0.352
E	2.50 / 0.098
F	9.50 / 0.374
G	4.30 / 0.169
H	1.90 / 0.075

Electrical Characteristics : 25°C, 100KHz, 1V

PART NO.	L ¹ (uH)	Li (uH) MIN.	DCR (mΩ) MAX	I _{sat} ² (Adc)	I _{rms} ³ (Adc)	HEIGHT "C" (mm/inch) MAX.
HMU1345-3R2	3.2	2.56	9.0	9.2	9.5	4.5 / 0.177
HMU1345-5R6	5.6	4.50	14.5	5.8	8.0	4.5 / 0.177
HMU1350-1R4	1.4	1.12	3.7	16.0	14.0	5.0 / 0.197
HMU1350-1R6	1.6	1.28	3.7	15.0	14.0	5.0 / 0.197
HMU1350-4R0	4.0	3.20	3.7	7.0	14.0	5.0 / 0.197
HMU1356-0R4	0.4	0.32	1.1	40.0	26.0	5.6 / 0.220
HMU1356-0R6	0.6	0.48	1.1	40.0	26.0	5.6 / 0.220
HMU1356-0R6HS	0.6	0.48	1.9	34.5	20.0	5.6 / 0.220
HMU1356-0R8	0.8	0.64	1.9	31.0	20.0	5.6 / 0.220
HMU1356-1R0LD	1.0	0.80	1.9	25.0	20.0	5.6 / 0.220
HMU1356-1R4	1.4	1.12	3.8	15.5	14.5	5.6 / 0.220
HMU1356-4R4	4.4	3.52	8.0	12.5	10.0	5.6 / 0.220
HMU1356-4R7HS	4.7	3.76	11.4	10.5	8.2	5.6 / 0.220
HMU1358-4R7	4.7	3.76	7.5	9.0	10.0	5.8 / 0.228
HMU1360M-3R1	3.1	2.48	8.0	14.0	10.0	6.0 / 0.236
HMU1362M-5R2	5.2	4.16	9.2	11.0	9.5	6.2 / 0.244

1. Tolerance of inductance is ± 20%.
2. I_{sat} is the DC current which cause the inductance drop to Li.
3. I_{rms} is the DC current which cause the surface temperature of the part increase less than 45°C.
4. Operating temperature : -20°C to 105°C (including self-temperature rise).



DELTA ELECTRONICS, INC.

(TAOYUAN PLANT CPBG) 252, SAN YING ROAD, KUEISAN INDUSTRIAL ZONE, TAOYUAN SHIEN, 333, TAIWAN, R.O.C.
 TEL: 886-3-3591968; FAX: 886-3-3591991
<http://www.deltaww.com>

X-ON Electronics

Largest Supplier of Electrical and Electronic Components

Click to view similar products for [Fixed Inductors](#) category:

Click to view products by [Delta](#) manufacturer:

Other Similar products are found below :

[MLZ1608M6R8WTD25](#) [MLZ1608N6R8LT000](#) [MLZ1608N3R3LTD25](#) [MLZ1608N3R3LT000](#) [MLZ1608N150LT000](#)

[MLZ1608M150WTD25](#) [MLZ1608M3R3WTD25](#) [MLZ1608M3R3WT000](#) [MLZ1608M150WT000](#) [MLZ1608A1R5WT000](#)

[MLZ1608N1R5LT000](#) [B82432C1333K000](#) [PCMB053T-1R0MS](#) [PCMB053T-1R5MS](#) [PCMB104T-1R5MS](#) [CR32NP-100KC](#) [CR32NP-](#)

[151KC](#) [CR32NP-180KC](#) [CR32NP-181KC](#) [CR32NP-1R5MC](#) [CR32NP-390KC](#) [CR32NP-3R9MC](#) [CR32NP-680KC](#) [CR32NP-820KC](#)

[CR32NP-8R2MC](#) [CR43NP-390KC](#) [CR43NP-560KC](#) [CR43NP-680KC](#) [CR54NP-181KC](#) [CR54NP-470LC](#) [CR54NP-820KC](#) [CR54NP-8R5MC](#)

[MGDQ4-00004-P](#) [MGDU1-00016-P](#) [MHL1ECTTP18NJ](#) [MHL1JCTTD12NJ](#) [PE-51506NL](#) [PE-53601NL](#) [PE-53630NL](#) [PE-53824SNLT](#) [PE-](#)

[62892NL](#) [PE-92100NL](#) [PG0434.801NLT](#) [PG0936.113NLT](#) [PM06-2N7](#) [PM06-39NJ](#) [HC2LP-R47-R](#) [HC2-R47-R](#) [HC3-2R2-R](#) [HC8-1R2-R](#)