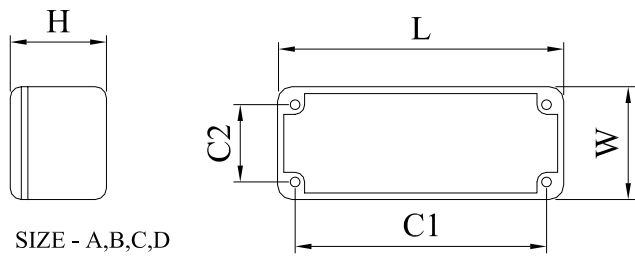
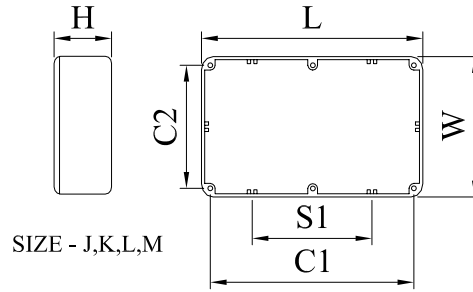


A range of diecast boxes in various sizes, manufactured in a robust aluminium alloy. These lightweight enclosures provide excellent screening against EMI/RFI and are therefore ideal housing for electronic components and circuits. The close fitting lid is secured using countersunk screws.

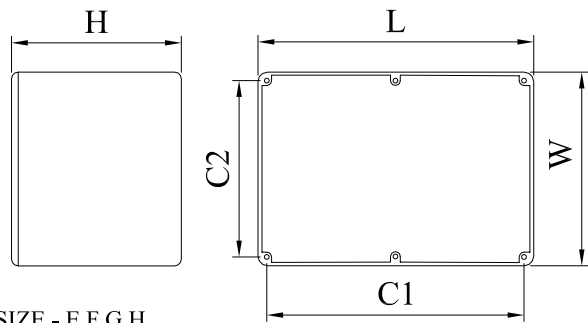
Material  
 Box & Lid :Aluminium Alloy LM24  
 Screws :Mild Steel Zinc Plated M3.5x9  
 Finish :60-80 microns Powder coating  
 Admiralty Grey BS4800 REF18B25  
 Black RAL 9005



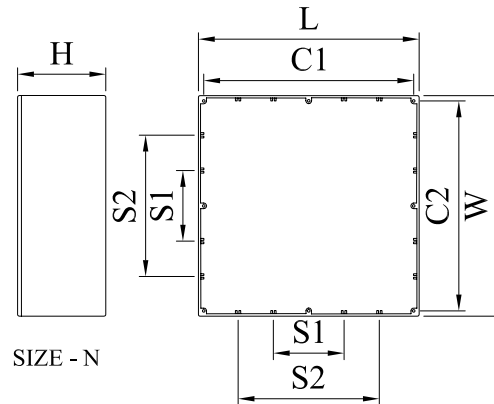
SIZE - A,B,C,D



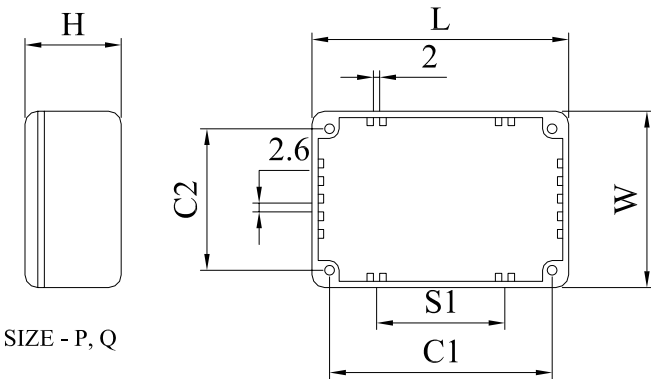
SIZE - J,K,L,M



SIZE - E,F,G,H



SIZE - N



SIZE - P, Q

Add letter after order code for colour required.  
 Black - E

TAPER 1.5° PER SIDE

Part No	Size	L	W	H	C1	C2	S1	S2	Wall Thickness	Taper
461-0010	A	88.9	34.9	29.5	79.4	25.4			1.5mm	Base to Lid
461-0020	B	114.5	64	29.5	104.6	54.1			1.5mm	Lid to Base
461-0030	C	115.7	90.5	54.9	104.6	79.4			1.5mm	Lid to Base
461-0040	D	115.3	64.5	54.9	103.4	52.5			2.0mm	Lid to Base
461-0050	E	171.5	120.6	54.9	160.5	109.6			2.0mm	Base to Lid
461-0060	F	171.5	120.6	105.7	160.5	109.6			2.0mm	Base to Lid
461-0070	G	222.3	146	55	211.5	135.3			2.0mm	Base to Lid
461-0080	H	222.3	146	105.7	211.5	135.3			2.0mm	Base to Lid
461-0090	J	275	175	65	264	164	132		2.0mm	Base to Lid
461-0100	K	139.7	101.6	76	128.7	90.6	64.4		2.0mm	Base to Lid
461-0110	L	165	127	76	154.1	116	77		2.0mm	Base to Lid
461-0120	M	120	100	35	108.3	88.2	50		2.0mm	Base to Lid
461-0130	N	250	250	100	238	238	80	160	2.5mm	Base to Lid
461-0140	P	80	55	25	70.5	45.5	40		1.5mm	Base to Lid
461-0150	Q	60	55	30	50.5	45.5	30		1.5mm	Base to Lid

DrgNo 461 SERIES

TITLE POWDER COATED GREY DIECAST BOX

ALL DIMENSIONS IN MM  
 ANGLES IN DECIMAL DEGREES

**DELTRON** Components

ISSUE 2

GENERAL SPECIFICATION  
 FOR 461 SERIES

CUSTOMER

FILTER REF

Aprvd Date 25/11/03

Aprvd By MC

Drwn by BS

Scale: NTS

Sheet 1 / 1

## X-ON Electronics

Largest Supplier of Electrical and Electronic Components

*Click to view similar products for [Enclosures, Boxes & Cases](#) category:*

*Click to view products by [Deltron](#) manufacturer:*

Other Similar products are found below :

[585-R-WH-PK](#) [60221-01](#) [60566-01-000](#) [HPL-9VB BATT DOOR](#) [M18-PLTD](#) [M-21-PLATED](#) [63310-01-000](#) [6711GSKT](#) [71884-29-028](#)  
[LH45-100 Black](#) [72868-510-000](#) [CNS-0000 Black](#) [72883-510-000](#) [CNS-0101 Black](#) [72906-510-000](#) [CNS-0407 Black](#) [73092-510-000](#) [CNM-](#)  
[0101 Black](#) [73105-510-000](#) [CNL-0101 Black](#) [73108-510-000](#) [CNL-0303 Black](#) [73395-510-039](#) [CNS-0006 Bone](#) [74016-510-000](#) [CNL-0006](#)  
[Black](#) [74257-510-000](#) [CNL-0004](#) [MDC-1183-PLAIN-ALUM](#) [MDC-1183-PTD](#) [MDC-13104-PTD](#) [MDC-321-PTD](#) [MDC-973-PTD](#) [76](#)  
[77153-01-028](#) [FLX6030](#) [83535-01-508](#) [90026-501-000](#) [PS36-200](#) [116-508](#) [120-407](#) [120-910](#) [127-908](#) [130-008](#) [1301170079](#) [1322GSKTEP](#)  
[1325GSKT3](#) [138-PLAIN](#) [1434-1210](#) [EAS-500 \(BLACK ANO\)](#) [1804RP-RB-PK](#) [190-005](#) [2202307](#) [KAB3321 BLACK](#) [KAB3421](#) [2697466](#)  
[S52213](#) [2901123](#) [2901699](#) [A0645271](#) [A20P20](#) [2106-IR](#)