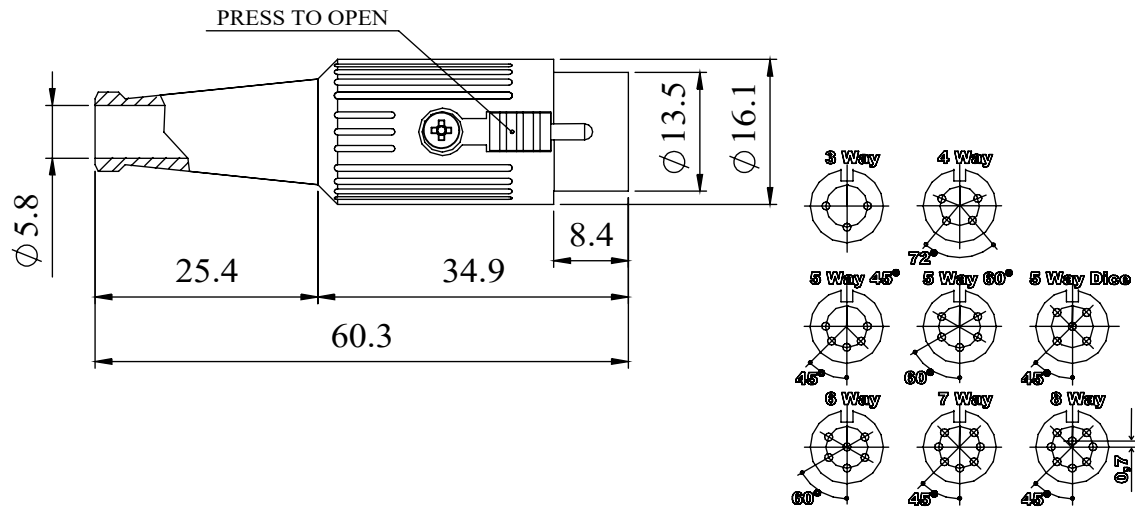


| | | | | | | | | | | |
|-----|---|-------------|------------|--|---|---|---|---|---|---|
| REV | 1 | DATE | ECN NUMBER | ECR COMMENT | 2 | 3 | 4 | 5 | 6 | 7 |
| 003 | | 07 May 2020 | C04605 | TYPO CORRECTION | | | | | | |
| 002 | | 27 Apr 2020 | C04605 | UPDATE PLATING DESCRIPTION ON SUPPLIER DRAWING AND WEB SPECS | | | | | | |

A FULLY SCREENED ROBUST RANGE OF DIN CONNECTORS FOR USE IN INSTRUMENTATION AND AUDIO APPLICATIONS. AVAILABLE IN TWO FINISHES; BRIGHT NICKEL AND BLACK CHROME. ROBUST CONSTRUCTION INCORPORATING CABLE GRIP AND STRAIN RELIEF.

MANUFACTURED TO DIN 41524, 45322, 45326, 45327 AND 45329.

DIMENSIONS



| MATERIALS | |
|-------------------------|--|
| HOUSING | ZINC ALLOY |
| HOUSING FINISH | BRIGHT NICKEL PLATED OR BLACK CHROME |
| MOULDING | NYLON |
| CONTACTS | BRASS CZ121, SILVER PLATED |
| CABLE CLAMP | MILD STEEL, SILVER PLATED |
| GROMMET | BLACK PVC |
| LOCKING LATCH | ZINC ALLOY, NICKEL PLATED |
| SCREW | MILD STEEL, NICKEL PLATED |
| ELECTRICAL | |
| RATED VOLTAGE | 34V A/C or D/C |
| CURRENT RATING | 2 AMP |
| TEST VOLTAGE | 500V r.m.s |
| INSULATION RESISTANCE | 103 M Ω MIN AT 100V DC |
| CONTACT RESISTANCE | 10m Ω MAX |
| CAPACITANCE (MATED) | 3 pF |
| RECOMMENDED CABLE SIZE | MAX CABLE 6mm ϕ MAX CONDUCTOR 1mm ϕ |
| CLIMATIC | |
| CLIMATIC CATEGORY | 25/070/21 |
| TEMPERATURE RANGE | -25°C TO +70°C |
| DAMP HEAT, STEADY STATE | 21 DAYS |

| TYPE | PART NUMBER | |
|-----------|-------------|----------|
| | NICKEL | BLACK |
| 3 WAY | 590-0300 | 591-0300 |
| 4 WAY | 590-0400 | 591-0400 |
| 5 WAY 45° | 590-0500 | 591-0500 |
| 5 WAY 60° | 590-0510 | 591-0510 |
| 5 WAY | 590-0520 | 591-0520 |
| 6 WAY | 590-0600 | 591-0600 |
| 7 WAY | 590-0700 | 591-0700 |
| 8 WAY | 590-0800 | 591-0800 |

PROPRIETARY AND CONFIDENTIAL:
 THE INFORMATION CONTAINED IN THIS DRAWING IS THE SOLE PROPERTY OF ALPHA 3 MANUFACTURING. ANY REPRODUCTION IN PART OR AS A WHOLE WITHOUT THE WRITTEN PERMISSION OF ALPHA 3 MANUFACTURING IS PROHIBITED.
 DEM Manufacturing is a division of Alpha 3 Manufacturing LTD
 DEM Manufacturing, Deltron Emcon House, Hargreaves Way, Sawcliffe Ind. Park, Scunthorpe, North Lincolnshire, DN15 8RF, UK

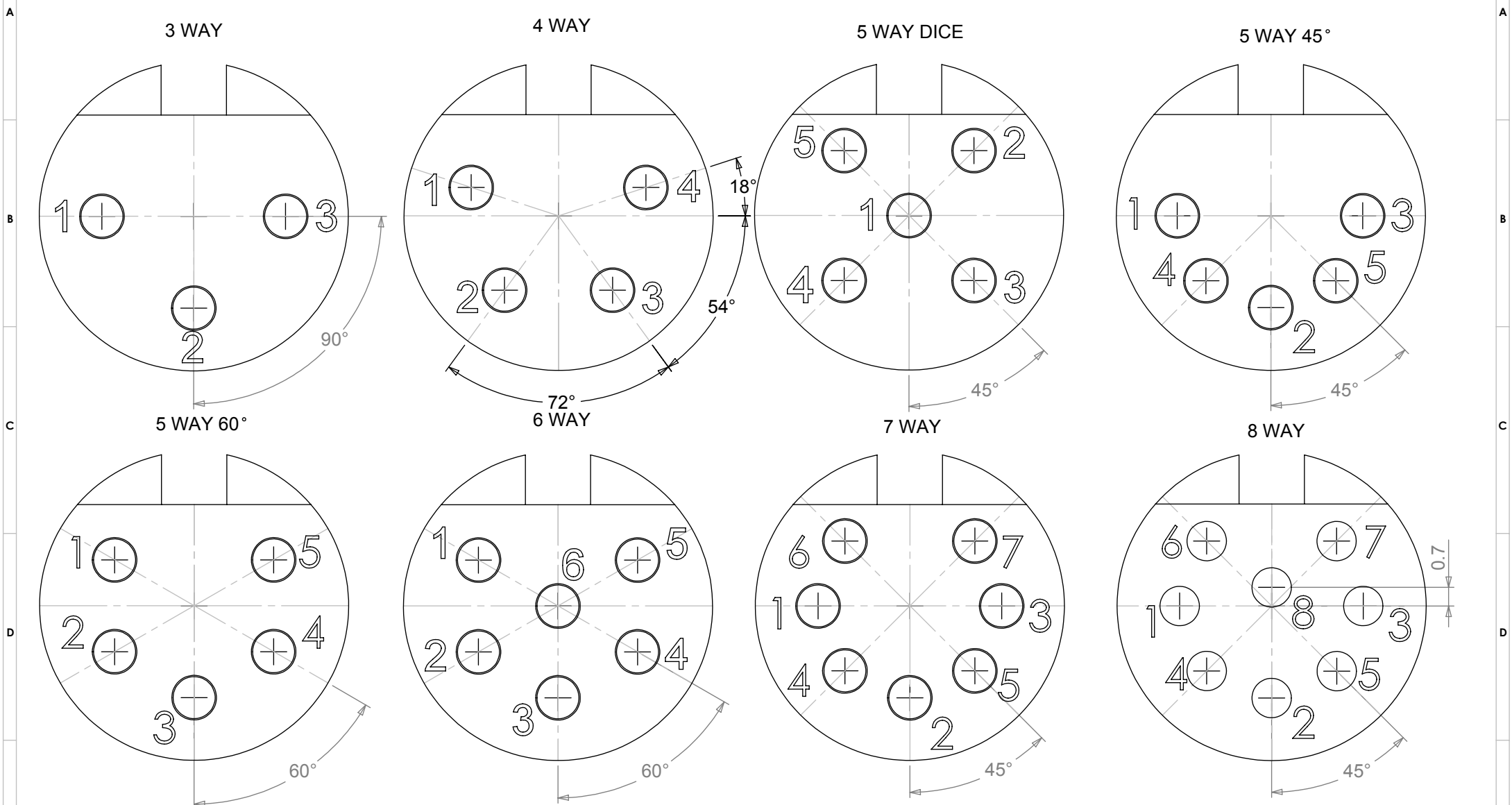
UNLESS OTHERWISE SPECIFIED DIMENSIONS ARE IN MILLIMETRES
 LINEAR & RADIAL TOLERANCE:
NO DECIMAL PLACES:
1 DECIMAL PLACE:
2 DECIMAL PLACES:
ANGULAR TOLERANCE:

IF IN DOUBT ASK! DO NOT SCALE DRAWING!
 FINISH: SEE NOTE
 MATERIAL: SEE NOTE
 THE FINISHED PRODUCT SHOULD BE CLEAN AND FREE FROM ALL LIQUIDS AND DEBRIS. SURFACES SHOULD BE OF UNIFORM APPEARANCE FREE FROM SHARP EDGES, BURRS AND CORROSION

| | | | | |
|------------------------|--------------|------------|-------------------------|-------------------------|
| AUTHOR | SB | TITLE | GENERAL SPECIFICATION | |
| EDITOR | DT | FILE | 590-591 SERIES | |
| APPROVER | PA | PART | LATCHING DIN CONNECTORS | |
| THIRD ANGLE PROJECTION | SHEET 1 OF 1 | ISSUE/REV. | 003 | EDIT DATE 07/05/2020 |
| | SCALE 1:1 | A4 | RELEASED | RELEASE DATE 07/05/2020 |

| | | | | | | | | | |
|-----|---|-------------|------------|-----------------------------------|---|---|---|---|---|
| REV | 1 | DATE | ECN NUMBER | ECR COMMENT | 3 | 4 | 5 | 6 | 7 |
| 001 | | 23 Apr 2018 | C03617 | ADD DESCRIPTION TO WEB SPEC | | | | | |
| 001 | | 27 Jun 2017 | C03654 | ADD PIN BASE NUMBERS TO WEB SPECS | | | | | |

PIN VARIATIONS USED IN: 590 / 591 / 592 / 600 / 601 / 610 / 611 - DIN PLUG CONNECTORS



MANUFACTURED TO DIN STANDARD 41524, 45322, 45326, 45327 AND 45329

PROPRIETARY AND CONFIDENTIAL:
 THE INFORMATION CONTAINED IN THIS DRAWING IS THE SOLE PROPERTY OF ALPHA 3 MANUFACTURING. ANY REPRODUCTION IN PART OR AS A WHOLE WITHOUT THE WRITTEN PERMISSION OF ALPHA 3 MANUFACTURING IS PROHIBITED.
 DEM Manufacturing is a division of Alpha 3 Manufacturing LFD
 DEM Manufacturing, Deltron Emcon House, Hargreaves Way, Sawcliffe Ind. Park, Scunthorpe, North Lincolnshire, DN15 8RF, UK

UNLESS OTHERWISE SPECIFIED DIMENSIONS ARE IN MILLIMETRES
 LINEAR & RADIAL TOLERANCE:
NO DECIMAL PLACES
1 DECIMAL PLACE
2 DECIMAL PLACES
ANGULAR TOLERANCE:

IF IN DOUBT ASK! DO NOT SCALE DRAWING!
 FINISH: CLEAN
 MATERIAL: REFER TO INDIVIDUAL RANGES
 THE FINISHED PRODUCT SHOULD BE CLEAN AND FREE FROM ALL LIQUIDS AND DEBRIS. SURFACES SHOULD BE OF UNIFORM APPEARANCE FREE FROM SHARP EDGES, BURRS AND CORROSION

AUTHOR: DT
 EDITOR: DT
 APPROVER: AY
 THIRD ANGLE PROJECTION
 SHEET 1 OF 1
 SCALE 5:1 A4

TITLE: PIN ORIENTATIONS
 FILE: DIN PLUG PIN ORIENTATION
 PART: DIN PLUG PIN BASE
 ISSUE/REV.: 001
 VERSION: 11
 RELEASED
 EDIT DATE: 23 Apr 2018

X-ON Electronics

Largest Supplier of Electrical and Electronic Components

Click to view similar products for [Circular DIN Connectors](#) category:

Click to view products by [Deltron](#) manufacturer:

Other Similar products are found below :

[60KD4M](#) [M83723/76W22326](#) [M83723/78R22327](#) [75-069228-21J](#) [7519021610P](#) [75-190224-28S](#) [7547401103P](#) [75-474014-07L](#) [88-559975-75P](#) [88-569735-06P](#) [88-569769-19P](#) [8R3006A18M0033](#) [PT02E1283P](#) [GTC00G-24-7S](#) [PT05A-14-5SX](#) [GTC030-20-27PW-LC](#) [GTC030A-20-33S](#) [1211290078](#) [1211810025](#) [1210503216](#) [1211290084](#) [1211500027](#) [ACS06AF-16-10P\(003\)](#) [D38999/40WD35PN](#) [D38999/44WD35BN](#) [D38999/44WH21AN](#) [D38999/44WH35AN](#) [D38999/44WJ35PN](#) [12DL6MX](#) [AFD50-14-04PW-6141](#) [AFD50-14-19S-6141](#) [AFD54-10-6PN-6117 L/T](#) [AFD57-22-12S-6141](#) [MS3102R18-1PZ](#) [MS3102R28-22PZ](#) [MS3112E20-24P](#) [MS3114F10-6P](#) [MS3116E8-4SW](#) [MS3122E14-19P](#) [171-2603](#) [17DN100-EX](#) [C015-50C006-100-1](#) [NYS322AG](#) [CA3100E18-1SBF80A176](#) [CA3100F18-10SB](#) [CA3100F18-1SB](#) [CA3101E18-10SBF80](#) [CA3101E18-12SB](#) [CA3102E12S-3P](#) [CA3102E14S-2P](#)