



FumeBuster

Recirculating fume extraction is now extremely important with the rising concern for our environment and employee safety. Purex Fume Extractors provide not only a flexible and portable process for plant redesigns and expansions, but also a more stable process by providing a controlled airflow to remove harmful fumes. All this while eliminating the added costs of building modifications, increased air handling systems and lost energy.

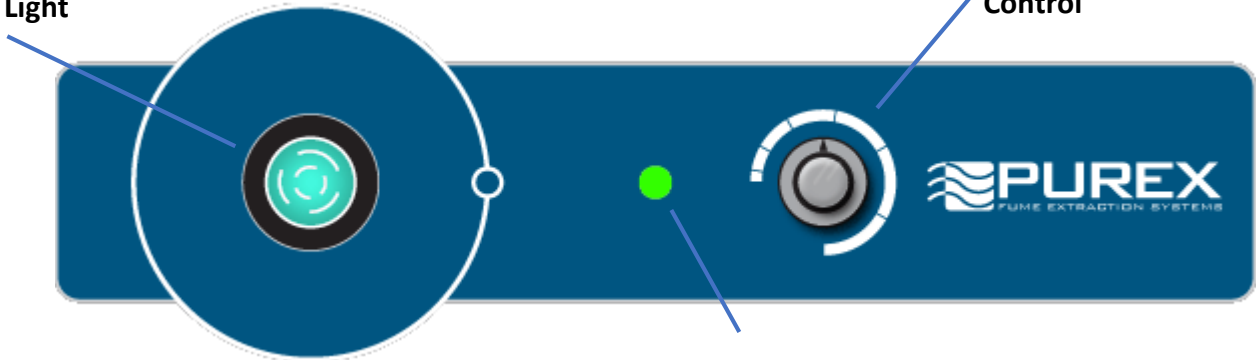
## Purex Systems

- ❖ Automatic Flow Control maintains constant extraction rate
- ❖ Adjustable Air Flow extends filter life
- ❖ Blocked Filter Warning
- ❖ Easy to change filters
- ❖ Quiet operation
- ❖ Reverse Air Flow prevents condensation and extends filter life
- ❖ HEPA filtration removes 99.997% of particles down to .3 microns
- ❖ Gas and particle sensors on exhaust
- ❖ Filter Blocked Monitor
- ❖ Remote Machine Interface
- ❖ Welded stainless steel construction
- ❖ Continuous run brushless motors
- ❖ Low energy consumption

# FumeBuster

Power Switch w/  
Indicator Light

Variable Speed  
Control



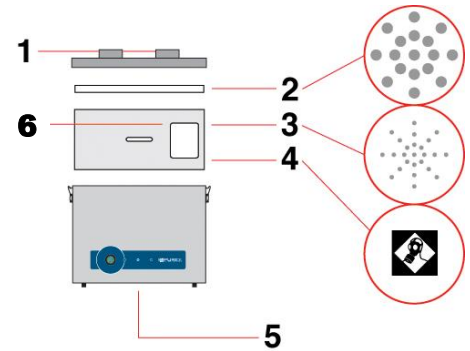
Filter Status  
Indicator

## Main Filter Options



HEPA/Chemical	110531EB
Chemical	110532EB
HEPA/Chemical Cleanroom*	110533EB

\*Use in combination with F8/F9 Prefilter



- 1) Dual Air inlet
- 2) Pre-filter
- 3) Main filter (HEPA Location)
- 4) Main filter (Carbon Location)
- 5) Clean air return
- 6) Filter I.D. label

## Pre-Filter



F5	40-60% efficient	3-5 $\mu$	200314EB
F8/F9	Composite	>95% eff .5-1 $\mu$	200098EB

	FumeBuster	
Model	070363EB	070362EB
Voltage (50hz/60Hz)	120v (1ph)	230v (1ph)
Wattage	.3 kW	.3 kW
Airflow	377 cfm (640 m <sup>3</sup> /Hr)	
Vacuum	2.5 inwg (.62 kPa)	
Air Inlet	75mm	
-Sound Rating	58 dBA	
Dimensions (L/W/H)	16.75in x 16.5in x 14in	
Weight	25 lbs	

## **X-ON Electronics**

Largest Supplier of Electrical and Electronic Components

*Click to view similar products for [Fume Extractors](#) category:*

*Click to view products by [Desco](#) manufacturer:*

Other Similar products are found below :

[FP-BVX](#) [AC-TX001-4](#) [AC-TX002-2](#) [35457](#) [35450](#) [ZEROSMOGELKIT1](#) [17701](#) [CS-ANAVI-33](#) [CS-ANAVI-34](#) [CS-ANAVI-35](#) [17015](#) [SA-91-E](#) [SAK-90](#) [910-6RHB](#) [AC-FX1](#) [BVX-ARM](#) [BVX-ARM-K1](#) [BVX-ARML](#) [BVX-CH01](#) [ECMFE](#) [WFE2ESKIT1](#) [35465](#) [FIL22H070](#)  
[EA1122](#) [CH0251](#) [CH0253](#) [WSA350](#) [BVX-101](#) [BVX-201](#) [BVX-201-KIT](#) [SAF-1](#) [EC234FE](#) [T0058762774](#)