



Made in the
United States of America

Conductive C-Type Connector Cover Features:

Conductive Composite

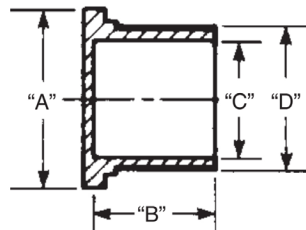
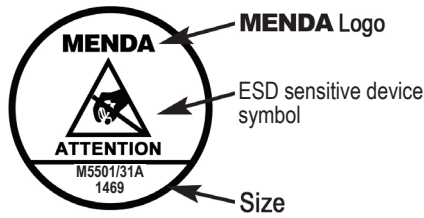
Permanently volume conductive and free of carbon black particulate. The connector covers do not leave black marks and are more suited to clean situations. Meets the requirements of NASM5501 31/32.

Noncorrosive

Connector covers are noncorrosive and produce no visible corrosion when tested to Federal Test Method 101C using Kovar test plates.

Conformability

The polyethylene material used in the covers was selected for its resilience. Properly sized, the covers provide a snug, secure fit. This helps keep connectors clean and prevents the cover from accidentally falling off.



Item No.	Size	"A"	"B"	"C"	"D"
Packaged 50/pack; 10 packs/case					
34216	20R	1.465"	0.562"	1.231"	1.301"
34217	20Y	1.406"	0.625"	1.15"	1.215"
34218	22R	1.59"	0.562"	1.34"	1.41"
34219	22Y	1.5"	0.625"	1.27"	1.34"
34220	24R	1.7"	0.562"	1.463"	1.533"
34221	24Y	1.64"	0.625"	1.39"	1.46"
34222	25Y	1.81"	0.625"	1.54"	1.58"
34223	28R	1.95"	0.562"	1.715"	1.79"
34224	28Y	1.875"	0.625"	1.645"	1.718"

Item No.	Size	"A"	"B"	"C"	"D"
Packaged 25/pack; 10 packs/case					
34225	32R	2.22"	0.562"	1.965"	2.04"
34226	32Y	2.125"	0.625"	1.89"	1.97"
34227	36R	2.435"	0.6"	2.215"	2.29"
34228	36Y	2.34"	0.625"	2.14"	2.21"

Item No.	Size	"A"	"B"	"C"	"D"
Packaged 100/ pack; 10 packs/case					
34205	10R	0.84"	0.5"	0.605"	0.665"
34206	10Y	0.75"	0.625"	0.53"	0.595"
34207	12R	0.97"	0.5"	0.72"	0.755"
34208	12Y	0.86"	0.625"	0.655"	0.715"
34209	14R	1.125"	0.5"	0.85"	0.905"
34210	14Y	1.031"	0.625"	0.785"	0.845"
34211	16R	1.22"	0.5"	0.973"	1.035"
34212	16Y	1.125"	0.625"	0.893"	0.963"
34213	18R	1.33"	0.562"	1.093"	1.155"
34214	18Y	1.25"	0.625"	1.03"	1.088"
34215	19R	1.4"	0.562"	1.125"	1.213"
34229	4R	0.67"	0.5"	0.25"	0.336"
34230	5R	0.67"	0.5"	0.313"	0.399"
34231	6R	0.67"	0.5"	0.375"	0.461"
34232	8R	0.74"	0.5"	0.48"	0.54"
34233	8Y	0.67"	0.625"	0.413"	0.483"
34234	9R	0.75"	0.5"	0.5"	0.586"

Chemical Susceptibility*	Reactions
Dilute Acids	Slight Attack
Dilute Alkalines	Slight Attack
Concentrated Acids	Slight Attack
Concentrated Alkalines	Slight Attack
Methanol, Ethanol, Isopropanol	Resistant
Hydrocarbons	Slight Attack
Ketones	Slight Attack
Oil and Gasoline	Slight Attack

Material Properties	Test Method	Typical Value
Resistance	ASTM D991	<10 ⁵ ohms
Contact Corrosivity	FTM 101C Method 3005 (Kovar plate)	Pass
Elongation	ASTM D638	24%
Tensile	ASTM D638	2700 psi
Vicat Softening	ASTM MD 1525	85° C
Outgassing	ASTM E595	Pass

Unless otherwise noted, tolerance ± 10%

Specifications and procedures subject to change without notice.

*ASTM F925

"It should be understood that any object, item, material or person could be a source of static electricity in the work environment. Removal of unnecessary nonconductors, replacing nonconductive materials with dissipative or conductive materials and grounding all conductors are the principle methods of controlling static electricity in the workplace, regardless of the activity." [ESD Handbook ESD TR20.20; section 2.4 Sources of Static Electricity]

CONDUCTIVE C-TYPE CONNECTOR COVERS

3651 WALNUT AVE. CHINO, CA 91710
PHONE: (909) 627-2453
WEBSITE: MENDATools.com

DRAWING NUMBER
34205

DATE:
April
2021

MENDA

X-ON Electronics

Largest Supplier of Electrical and Electronic Components

Click to view similar products for [Circular MIL Spec Tools, Hardware & Accessories](#) *category:*

Click to view products by [Desco](#) *manufacturer:*

Other Similar products are found below :

[0113-201-2025](#) [600-079-06](#) [600-146-06](#) [M10-101983-183](#) [M10-454396-008](#) [602GB18808](#) [CS3102A-22-14PW](#) [M2887615-CD](#) [627-009](#)
[M38999/9-19B](#) [630A007NF083A](#) [630B007M051A](#) [630BJ003NF032H](#) [637-149NF04B](#) [M39029/29-215](#) [6408-203V-09273](#) [6426-201-11343](#)
[650FS002NF16](#) [660-008NF14S7-01](#) [660-009M22H8-03](#) [660-013NF19U6-210](#) [660-015M10S6-17](#) [660-015NF10S5-01](#) [660-015NF14R3.5-01](#)
[660-023NF19H6-19](#) [660-024NF11S12-01](#) [660-024NF11S3-01](#) [660-024NF17S4-109](#) [660-050XM17F4-01](#) [660-068NF25R6-30G](#) [660-](#)
[070M23S8-04](#) [660-073MTCH9-20](#) [M83723/61-18W](#) [M83723/61-218R](#) [M83723/61-224W](#) [667-084-23C](#) [667-084-35C](#) [667-224NF16](#) [687-](#)
[697NF-1](#) [M85049/94-10-A](#) [M85049/96-7-A](#) [M855282-10A01A](#) [M85528/2-10B](#) [M855282-18A01A](#) [M85528/2-22A01A](#) [M85528/2-22AA](#)
[710HS460NF2508](#) [780-001-22G12-SK](#) [780-002-19G12-SK](#) [780-002-20G12SK](#)