

Series II Fume Extraction System

Powerful, Portable Fume Extraction

The MENDA Series II Fume Extraction System is a two-arm filtration system that combines powerful fan performance with efficient filtration. The compact design and easy set-up makes it truly portable.

Depending on the application, three filter configurations are offered: The standard item (35470) comes with a 95% efficient Non-HEPA filtration for solder fumes. You also have the option of purchasing a HEPA filter (35472) or a Deep Bed Gas Filter (35473) for the removal of gases from solvents, conformal coating, etc.

The air inlet ports allow the connection of 50 mm (2") or 63 mm (2.5") diameter exhaust arms.

Inspection

Item	Description
35470	Series II Fume Extractor, w/ Non-HEPA Filter
35471	Pre-Filter (5PK), for use with (HEPA Filter, Gas Filter Only)
35472	Main Filter, HEPA 99.97% / Carbon
35473	Deep Bed Gas Filter 99.97%
35474	Main Filter, Non HEPA 95%
35475	2.5' Arm w/6' Hose & Bracket
35476	Arm w/Bracket, Clamps
35477	Flex Exhaust Arm 2.5'
35478	Flex Exhaust Arm 5'
35479	Table Bracket, Clamps
35480	Connect Hose, 6'
35481	Connect Hose, 12'
35482	Remote SW, Series II



Items included with model 35470:

- 1 Unit with 35474 filter installed
- 1 Remote Start/Stop Button (35482)
- 1 Power Cord, 120V US Plug
- 2 Flex Exhaust Arms 5' (35478)

Installation

Extractor Installation Procedure

Remove Fume Extractor from the shipping carton and inspect for any damages. Make sure you have access to the unit for filter maintenance.

Connect the power cord into the outlet on the side of the system. Plug the power cord into a grounded wall socket.

Connect the arms/hose to the inlet on the base of the fume extractor.

To power up system, depress the power switch, located on the bottom right of the unit. The operator can expect a delay of a few seconds before hearing the motor running. This is due to the built-in motor "Soft-start" feature.

If utilized, connect the supplied remote Start/Stop switch to the system and site the switch in a convenient position on the workbench. We recommend that this switch be used for your convenience.

Position the extraction arms to optimize fume capture.

Follow maintenance procedures on next page.

Caution

To provide protection against the risk of electrical shock, connect to properly grounded outlets only.

Features

- Efficient motor with "soft-start" feature
- Optional, remote Start/Stop switch
- Audible alarm to indicate blocked filters
- Low noise level <55 dba
- High suction force and airflow
- Compact and portable
- Standard Filter Efficiency at 95% (35474)
- Connects to 50mm (2") or 63mm(2.5") hoses or exhaust arms
- ESD safe housing
- Optional HEPA Filter Available (35472)
- Optional Gas Filter Available (35473)

Maintenance

General

User maintenance is limited to cleaning the unit and replacing the filters with new. Only MENDA is authorized to carry out component testing and replacement. Unauthorized work or the use of unauthorized replacement filters may result in a potentially dangerous situation and/or damage to the extractor unit, and will invalidate the manufacturer's warranty.

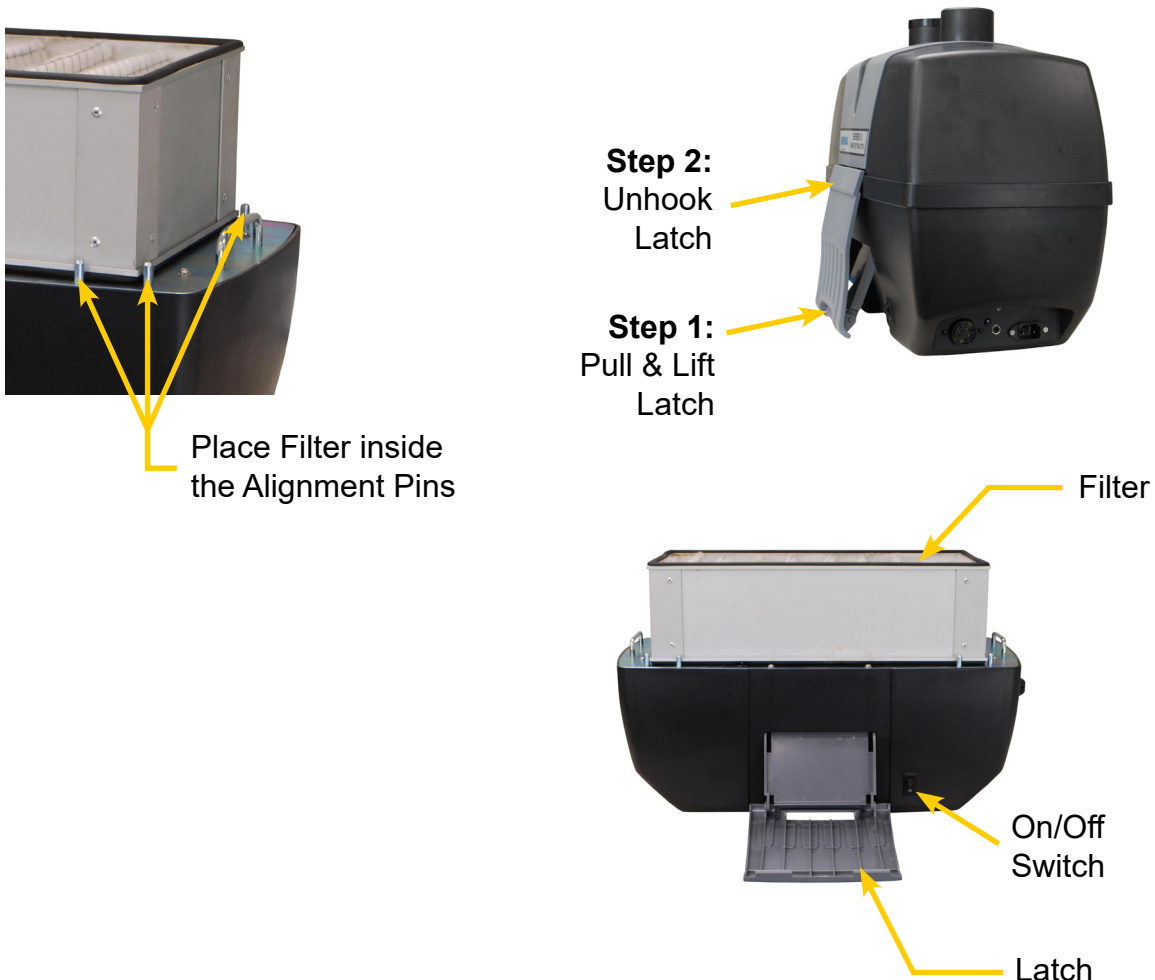
Cleaning Unit

To clean, use a light wipe with a gentle cleaner to prevent build up of particulate and flux residue. Be sure the unit is turned off while cleaning.

The cooling inlets and outlets should be cleaned once a year to prevent build up of dust and overheating of which are on each side of the unit.

Replacing Filters

1. Turn unit off and disconnect the power cord.
2. Unlatch both filter cover catches and remove the filter cover. (see below)



3. Replace the main filter. Ensure the main filter is placed inside the alignment pins so that the interlock switch is depressed.
4. Replace the filter cover and ensure a proper fit to the bottom housing. Hook both latches into the filter cover and press down carefully to engage each latch to the base.
5. Reconnect power cord and turn system on.
6. If the unit does not operate, refer to the troubleshooting section.

Problem	Possible Cause	Check
No air flow	No Power	Check On/Off switch Check power outlet Check power cord Check safety interlock switch
Poor Performance	Air Leak	Check hose/arm for leaks Check hose/arm for proper installation Check hose/arm for partial clogging

Caution

To prevent overheating, units should not be operated with a blocked filter condition, or with dust obstruction of inlets or outlets.

Model 35470

Filter replacement indication

As fumes are filtered inside the unit, any particulate will be captured and over time will start to clog the filter. This clogging will result in a reduction of the airflow, which may reduce the amount of fumes extracted from the work area. Once the filter starts to become blocked an audible alarm will sound from the main unit. This is to signify that filter replacement is required.

35472, 35473 - HEPA/GAS Filters Only

As fumes are filtered inside the unit, any particulate will be captured and over time will start to clog the filter. The coarse particles are collected in the pre-filter while fine particulate will be collected in the HEPA filter. This clogging will result in a reduction of the airflow, which may reduce the amount of fumes extracted from the work area. Once the filters starts to become blocked an audible alarm will sound from the main unit. This is to signify that filter replacement. When using a HEPA or Gas Filter initially replace the pre-filter (35471). If this does not silence the alarm then replace the main filter too.

Pre-filters should be replaced approximately every 4 – 6 weeks depending on the application. We recommend that a stock of replacement filters be kept for optimal extraction performance and minimum down-time. MENDA part number 35471.

Warning! Do not attempt to clean filters. Attempted cleaning can damage filters and cause potential risk to health and equipment.

Note: MENDA recommends replacement of Main Filters annually as a minimum. Use only original replacement filters.

MENDA Series II Fume Extractor Specifications

Capacity:	90 CFM		
Size:	height 20" x depth 10" x width 15.3"		
Weight:	20 lbs. / 9 kg		
Rated Output:	85 Watts		
Electrical supply:	100 – 240 VAC, 1 phase 50-60 Hz		
Full Load Current:	0.3A (0.65A)		
Noise level:	< 55dBA		
Filters:	Filter	Surface area	2.0 m ²
		Efficiency F7	95% @ 0.5μ
Duct Size:	50mm		

Certification: TUV Approved

Made in China

Limited Warranty

Menda expressly warrants that for a period of one (1) year from the date of purchase, Menda Fume Extraction Units will be free of defects in material (parts) and workmanship (labor). Within the warranty period, the product will be tested, repaired, or replaced at Menda's option, free of charge. Call our Customer Service Department at (909) 627-2453 for a Return Material Authorization (RMA) and proper shipping instructions and address. Include a copy of your original packing slip, invoice, or other proof of purchase date. Any unit under warranty should be shipped prepaid to the Menda factory. Warranty repairs will take approximately two weeks.

If your unit is out of warranty, call Customer Service at (909) 627-2453 for a Return Material Authorization (RMA) and proper shipping instructions and address. Menda will quote repair charges necessary to bring your unit up to factory standards.

Warranty Exclusions

THE FOREGOING EXPRESS WARRANTY IS MADE IN LIEU OF ALL OTHER PRODUCT WARRANTIES, EXPRESSED AND IMPLIED, INCLUDING MERCHANTABILITY AND FITNESS FOR A PARTICULAR PURPOSE WHICH ARE SPECIFICALLY DISCLAIMED. The express warranty will not apply to defects or damage due to accidents, neglect, misuse, alterations, operator error, or failure to properly maintain, clean or repair products.

Limit of Liability

In no event will Menda or any seller be responsible or liable for any injury, loss or damage, direct or consequential, arising out of the use of or the inability to use the product. Before using, users shall determine the suitability of the product for their intended use, and users assume all risk and liability whatsoever in connection therewith.

X-ON Electronics

Largest Supplier of Electrical and Electronic Components

Click to view similar products for [Fume Extractors](#) category:

Click to view products by [Desco](#) manufacturer:

Other Similar products are found below :

[FP-BVX](#) [AC-TX001-4](#) [AC-TX002-2](#) [35457](#) [35450](#) [ZEROSMOGELKIT1](#) [17701](#) [CS-ANAVI-33](#) [CS-ANAVI-34](#) [CS-ANAVI-35](#) [17015](#) [SA-91-E](#) [SAK-90](#) [910-6RHB](#) [AC-FX1](#) [BVX-ARM](#) [BVX-ARM-K1](#) [BVX-ARML](#) [BVX-CH01](#) [ECMFE](#) [WFE2ESKIT1](#) [35465](#) [FIL22H070](#)
[EA1122](#) [CH0251](#) [CH0253](#) [WSA350](#) [BVX-101](#) [BVX-201](#) [BVX-201-KIT](#) [SAF-1](#) [EC234FE](#) [T0058762774](#)