

Thank you for purchasing our DMX RDM Shield for Arduino.

GETTING STARTED

To set up your development environment go to www.arduino.cc and download their development tools. After setting up the Arduino development environment our library (Conceptinetics DMX Library) can be downloaded from: <http://sourceforge.net/projects/dmxlibraryforar>. The libraries can be unzipped to the Arduino library directory after setting up Arduino. Full instructions on installing libraries can be found on the official Arduino website as well. Examples are included in our library download that show you how to create a simple DMX Master or Slave sketch

JUMPERS SETTINGS

The Conceptinetics DMX Library is a USART based library which implies that both TX and RX jumpers should be placed in the TX-uart and RX-uart positions.

If you want to use the shield as a DMX Slave only you can set the Shield into Slave mode by using the third jumper. In case you are going to use the shield as RDM Responder or as DMX Master you need control read and writes which can be done by putting the third jumper in to the DE position, this will allow you to control read and writes using Digital pin 2.

The EN and NOT EN pin is used to enable and disable the shield, because the shield uses the Arduino serial which is also used to upload new software the shield can not be enabled while uploading. Simply place the jumper into the NOT EN position and you can freely upload your software. After uploading put it back in EN position.

RDM (Remote device management)

If you are going to use the device to support RDM you can use the following UID we have reserved for you from our range.

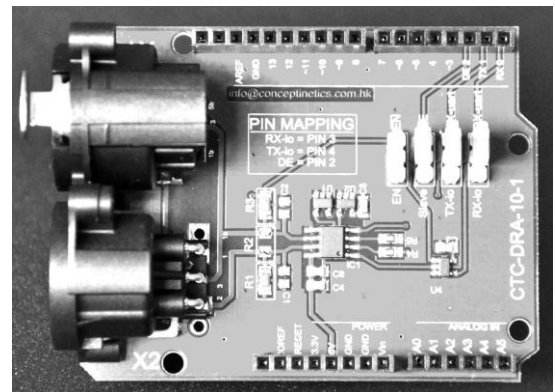
Manufacturer ID: 0x0707

Device ID: 0x00 0x0A 0x40 0x07

Please keep this ID for yourself to assure your device's uniqueness.

CAUTION

It is recommended to disconnect the Arduino from any power source before plugging in and out the shield and or other peripherals. This shield not built in any protection that protects your equipment against power surges, ground loops, ESD or any



Non Isolated DMX RDM Shield

GENERAL

This shield was designed to server as a low cost high quality DMX and RDM Shield for people who want to experiment with the use of the DMX Protocol. We made our jumper selection such that plugging and unplugging the shield can be kept to a minimum. The shield is compatible with our Conceptinetics DMX Library but also has been tested successfully with many other DMX libraries that are available.

We sincerely hope you will enjoy the use of our DMX RDM Shield in your project and don't forget to share your experience with us on <http://dmxshield.blogspot.com>

DISCLAIMER: Conceptinetics Technology and Consultancy Limited does not accept any responsibility or liability for any damage that might be caused during the use of our products. The user merely itself is responsible to determine whether the environment is suitable for using our products.

X-ON Electronics

Largest Supplier of Electrical and Electronic Components

Click to view similar products for [Display Development Tools](#) category:

Click to view products by [DF Robot](#) manufacturer:

Other Similar products are found below :

[KIT 60121-3](#) [S5U13U11P00C100](#) [MAX14521EEVKIT](#) [KIT 60145-3](#) [S5U13748P00C100](#) [DFR0413](#) [3248](#) [DLPLCR90EVM](#)
[MAX20069EVKIT#](#) [KIT95000-3](#) [LCD-16396](#) [PIM370](#) [1109](#) [MCIMX-LVDS1](#) [MIKROE-2449](#) [MIKROE-2453](#) [131](#) [DEV-13628](#) [1590](#)
[MIKROE-2269](#) [1601](#) [1770](#) [1947](#) [1983](#) [1987](#) [2050](#) [2218](#) [2219](#) [2260](#) [2345](#) [2418](#) [2423](#) [2454](#) [2455](#) [2478](#) [2674](#) [SK-220RD-PI](#) [FIT0477](#) [333](#)
[1774](#) [334](#) [TE-M321-SDK](#) [DFR0428](#) [cs-epapersk-03](#) [338](#) [DEV-14442](#) [FIT0478](#) [cs-paperino-01](#) [OM-E-OLE](#) [ALTHSMCMIPILCD](#)