



SC Electronics Tech

# SilvanChipElectronicsTech.Co.,Ltd.

Address: Fl.16 FuChang Building, Binhe Rd, Shenzhen, China

## SC2272

### SC2272 Description: (Compatible:PT2272)

SC2272 is a remote control decoder paired with SC2262 and SC2260 utilizing CMOS technology. It has 12 bits of tri-state address pins providing a maximum of 531,441 address codes; thereby, drastically reducing any code collision and unauthorized code scanning possibilities. SC2272 is available in several options to suit every application need: variable number of data output pins, latch or momentary output type.

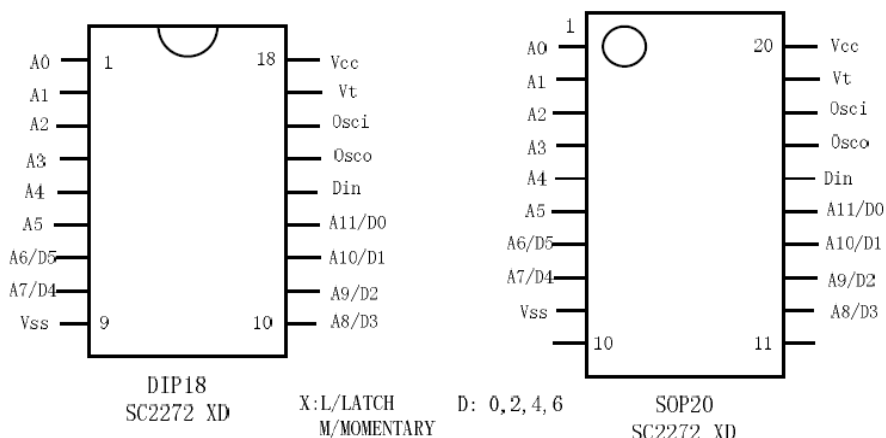
### SC2272 Features: (Compatible:PT2272)

- Low power consumption
- Wide operating temperature range: -30 ~ 70 °C
- Up to 12 tri-state code address pins
- Up to 6 data pins
- Single resistor oscillator
- Latch or momentary output type

### SC2272 Applications: (Compatible:PT2272)

- Home/motor car security system
- Garage door controller
- Remote fan controller
- Remote control toys

### SC2272 Pin Configuration: (Compatible:PT2272)





SC Electronics Tech

# SilvanChipElectronicsTech.Co.,Ltd.

Address: Fl.16 FuChang Building, Binhe Rd, Shenzhen, China

## SC2272 PIN Description:(Compatible:PT2272)

- (Definition: "1" Vcc "0" Vss "F" Floating )
- A0-A5 address pin tri-state adds. "0" "1" "F"
- A6/D5- A11/D0 address or data pin data output "0" , "1"
- Din received signal input this pin
- Osci oscillator input pin
- OscO oscillator output pin
- Vt if received valid signal will "1"
- Vcc power positive 2- 6 V
- Vss power negative

## SC2272 Characteristics :(Compatible:PT2272)

- |         |                 |         |                 |
|---------|-----------------|---------|-----------------|
| Vcc     | -0.3- 5 V       | Vi      | -0.3- Vcc+0.3 V |
| Vo      | -0.3- Vcc+0.3 V | Pmax    | 150 mW          |
| Icc max | 0.02 uA /       | Osc     | "F" A0-A11 "F"  |
| Ioh min | -3 mA /Vcc 5 V  |         |                 |
| Iol min | 2 Ma /Vcc 5V    |         |                 |
| Vih min | 0.7Vcc          | Vil max | 0.3Vcc          |

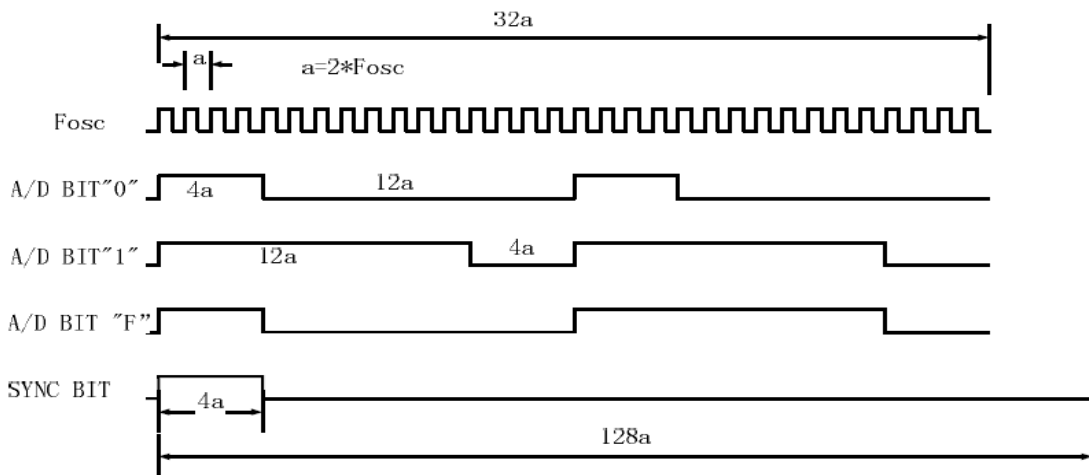
## SC2272 Functions description:(Compatible:PT2272)

SC2272 decode signal from Din pin. If the code from SC2262 valid same as SC2272 set and received two times, the data pins will be "1" or "0" same as SC2262 data pins and will drive the confirm pin Vt to "1". The SC2272 code same as SC2262 means:

- 1、 the address pin state of SC2272 same as SC2262 .
- 2、 the oscillator frequency of SC2272 coordinate SC2262

## SC2272 Code Description:(Compatible:PT2272)

- 1、 There are 12 A/D BIT and 1 SYNC BIT in one frame



Phone: 86-0755-88291843 88304213

Fax : 86-0755-88290509

E-mail: [jja@sc-tech.cn](mailto:jja@sc-tech.cn)

Http:// [www.sc-tech.cn](http://www.sc-tech.cn)



SC Electronics Tech

# SilvanChip Electronics Tech. Co., Ltd.

Address: Fl.16 FuChang Building, Binhe Rd, Shenzhen, China

- 2、"F" BIT only for address
- 3、bit order A0 A1 A2 A3 A4 A5 A6/D5 A7/D4 A8/D3 A9/D2 A10/D1 A11/D0 SYNC

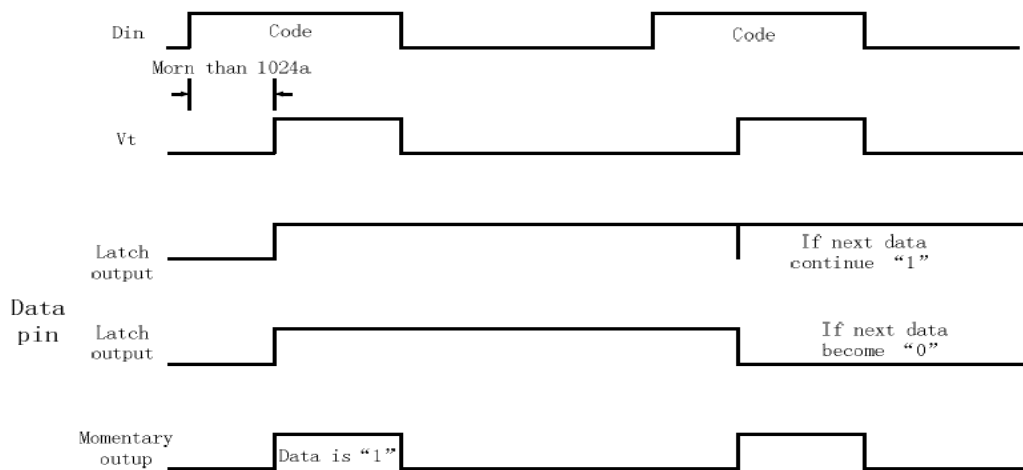
## SC2272 Single resistor oscillator: (Compatible:PT2272)

Outside resistor with inside circuit become oscillator.

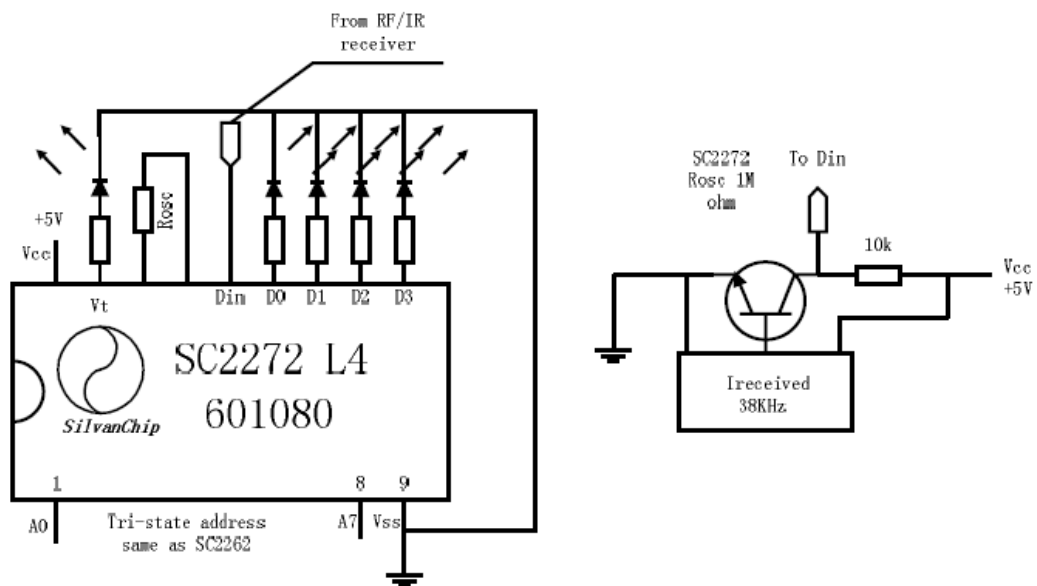
SC2262 and SC2272 oscillator coordinate as follow:

SC2262	Rosc 4.7M	SC2272	Rosc 820K
	1.2M		220K
	1.5M		270K

## SC2272 Latch and momentary output: (Compatible:PT2272)



## SC2272 APPLICATIONS CIRCUIT: (Compatible:PT2272)



Phone: 86-0755-88291843 88304213

Fax : 86-0755-88290509

E-mail: [jj@sc-tech.cn](mailto:jj@sc-tech.cn)

Http:// [www.sc-tech.cn](http://www.sc-tech.cn)

## X-ON Electronics

Largest Supplier of Electrical and Electronic Components

*Click to view similar products for [Sub-GHz Development Tools](#) category:*

*Click to view products by [DF Robot](#) manufacturer:*

Other Similar products are found below :

[EVAL-ADF7021DBJZ](#) [EVAL-ADF7021-NDBZ2](#) [EVAL-ADF7021-VDB3Z](#) [EVAL-ADF7023DB3Z](#) [MICRF219A-433 EV](#) [MICRF220-433 EV](#) [AD6679-500EBZ](#) [EVAL-ADF7901EBZ](#) [EVAL-ADF790XEBZ](#) [110976-HMC453QS16G](#) [STEVAL-IKR002V7D](#) [MAX2602EVKIT+](#) [MAX1472EVKIT-315](#) [MAX1479EVKIT-315](#) [STEVAL-IKR002V3D](#) [MAX7042EVKIT-315+](#) [MAX2902EVKIT#](#) [MAX9947EVKIT+](#) [MAX1470EVKIT-315](#) [SKY66188-11-EK1](#) [SKY66013-11-EVB](#) [EVAL-ADF7023DB5Z](#) [DRF1200/CLASS-E](#) [1096](#) [1097](#) [1098](#) [MDEV-900-PRO](#) [DVK-SFUS-1-GEVK](#) [DVK-SFUS-API-1-GEVK](#) [US-SIGFOX-GEVB](#) [STEVAL-IKR002V2D](#) [107755-HMC454ST89](#) [DM182017-2](#) [110961-HMC453ST89](#) [DM182017-1](#) [3179](#) [DC689A](#) [DC1513B-AB](#) [3229](#) [3230](#) [3231](#) [3232](#) [DC1250A-AA](#) [DC1513B-AC](#) [DC1513B-AD](#) [DC1513B-AA](#) [TEL0075](#) [RFX1010-EK1](#) [131903-HMC921LP4E](#) [EU-SIGFOX-GEVB](#)