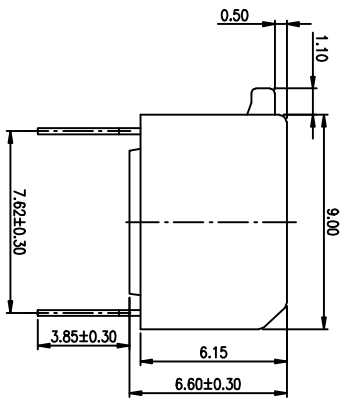
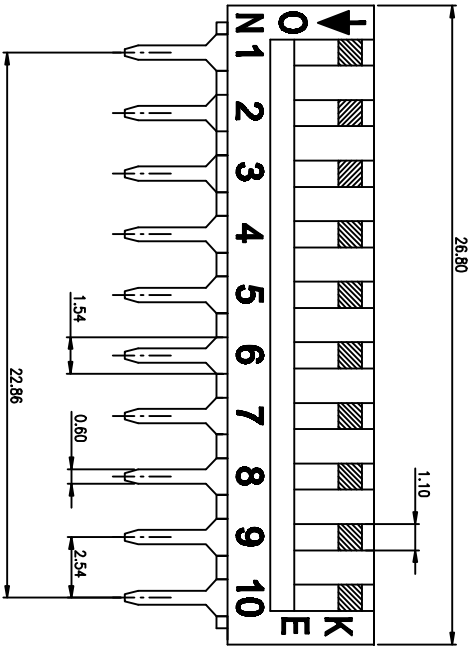


PRODUCT NO. DSPV10LHGET
RoHS compliant

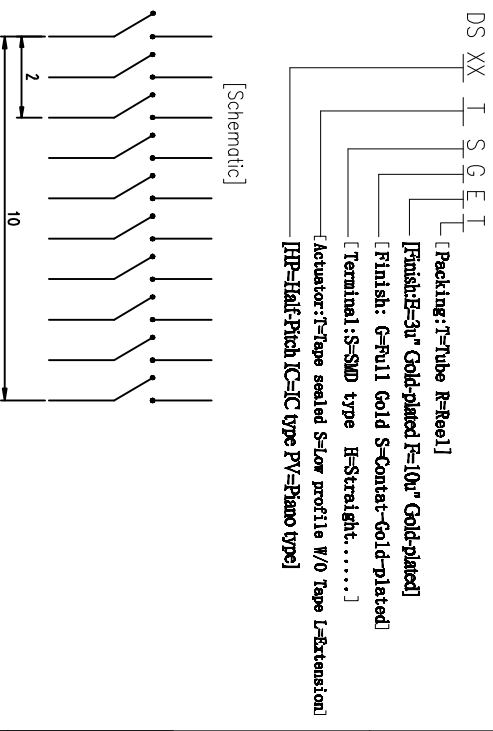
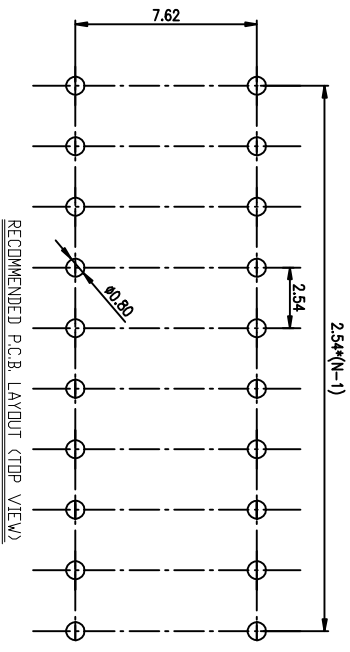
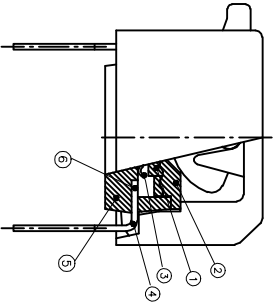
1 2 3 4 5

NOTES : 1 Specification:
1>.Operating force:10000gf Max
2>.Operating Temperature: -40° to+85°
3>.Storage Temperature: -40° to+85°
4>.Mechanical Life:3000cycles minimum
5>Electrical Life:2000cycles minimum

REV.	ECN NO.	DR	DATE



2. PLATING:
GOLD FLASH 1u"(min.) SOLDER TALL,
3u" GOLD PLATING ON THE CONTACT AREA,
WITH 50u" NICKEL UNDERPLATING OVERALL.
3. CONTACT RATING:
1. SWITCHING: 25mA at 24VDC
2. NON-SWITCHING: 100mA at 50VDC
WITH 50u" NICKEL UNDERPLATING OVERALL.
4. PART NUMBER DESCRIPTION :



Number	Part Name	Material	Finished
①	Actuator	UL94 V0	White
②	Cover	UL94 V0	Black
③	Movable	Copper Alloy	3u" Gold
④	Terminal	Brass	1u" Gold
⑤	Base	UL94 V0	Black
⑥	Terminal Contact	Brass	3u" Gold

TOLERANCE UNLESS OTHERWISE SPECIFIED	ANGLES	PROJECTION
0 ± 0.25	0 ± 2°	
.00 ± 0.15	.0 ± 1°	
.000 ± 0.10	.00 ± 0.5°	

INSPECTION COPY	TITLE
BY DSPV SERIES PITCH 2.54mm	东莞市广睿实业有限公司 Dongguan Kingtek Industrial Co., Ltd.
PRODUCT FAMILY DSPV SERIES	
PRAT NO. DSPV10LHGET	
FILE NO. DSPV10LHGET-A	
SIZE UNIT SCALE SHEET REV.	
A4 mm Z : 1 TOP 1 A	

X-ON Electronics

Largest Supplier of Electrical and Electronic Components

Click to view similar products for [DIP Switches/SIP Switches](#) category:

Click to view products by [DGI](#) manufacturer:

Other Similar products are found below :

[78M03S](#) [79B10T](#) [8136-475G4T](#) [G7G-1A2-CB-DC12](#) [A7SS-M](#) [DBP 2110](#) [DBP 2112](#) [DBS1008](#) [DHN02FTVTR](#) [DHN10T](#) [DHS108](#) [DM-08](#)
[DP-10-H](#) [DPL08TN](#) [DRD16CSE04](#) [DRR4010](#) [DRR60016](#) [DRS4016](#) [BD06E](#) [1825008-1](#) [1825444-1](#) [218-8LPSTF](#) [219-6LPSTRF](#)
[25.350.0653.0](#) [LA2-DC12](#) [SBS 5004 TG](#) [SDA10H1BDA](#) [97R06ST](#) [A2C-2A5](#) [1825444-7](#) [ADE08SA04](#) [ADE12S04](#) [2-1825058-8](#) [CCVA](#)
[2.5/ 4-G-5.08 P26THRR32](#) [25.330.0653.1](#) [25.352.0353.0](#) [MDG305ST](#) [IKN0600000](#) [IKN0800000](#) [LA2-002-DC24](#) [DBP2008](#) [DBS1003](#)
[DBS2008](#) [438872000](#) [WT11-D1-06](#) [DM-02](#) [DRD10CRAE04](#) [DRS1604](#) [DSR02T](#) [DSS 208 N](#)