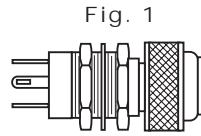
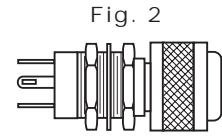


800 & 801 SERIES FOR 15/32" MOUNTING HOLE

PART NO.	MIL DESIG.	COLOR FIG.
800-1030-0331-504	MS25041-6	R 1
800-1030-0332-504	MS25041-7	G 1
800-1030-0333-504	MS25041-8	Y 1
801-1030-0331-504	MS25041-2	R 2
801-1030-0332-504	MS25041-3	G 2
801-1030-0333-504	MS25041-4	Y 2



FLAT PRESS-TO-TEST WITH
NON DIMMING LENS CAP

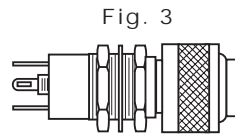


FLAT PRESS-TO-TEST WITH
DIMMING LENS CAP

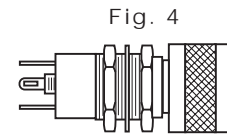
Uses:
T-1 3/4 MIDGET
FLANGE BASE
INCANDESCENT LAMP
OR BASED LED LAMP

803 & 804 SERIES FOR 5/8" MOUNTING HOLE

PART NO.	MIL DESIG.	COLOR FIG.
803-1710-0331-504	MS25331-6	R 3
803-1710-0332-504	MS25331-7	G 3
803-1710-0333-504	MS25331-8	Y 3
804-1710-0331-504	MS25331-2	R 4
804-1710-0332-504	MS25331-3	G 4
804-1710-0333-504	MS25331-4	Y 4



FLAT PRESS-TO-TEST WITH
NON DIMMING LENS CAP

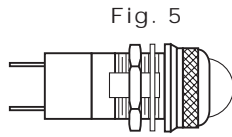


FLAT PRESS-TO-TEST WITH
DIMMING LENS CAP

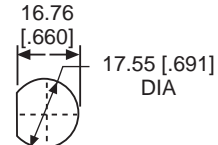
Uses:
T-3 1/4 MINIATURE
BAYONET BASE
INCANDESCENT LAMP

373, 375 & 376 SERIES FOR 11/16" MOUNTING HOLE • WATERTIGHT

PART NO.*	MIL DESIG.	COLOR FIG.
373-0410-0131-203	LH76/3, LC14RN3	R 5
375-0410-0131-203	LH76/3, LC17RN3	R 6
376-0410-0131-203	LH76/3, LC18RN3	R 7

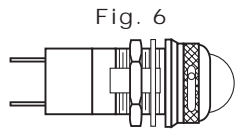


CONVEX, TRANSPARENT
LENS CAP



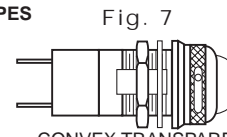
RECOMMENDED
PANEL CUTOUT

Uses:
T-3 1/4
MINIATURE
BAYONET
BASE
INCANDESCENT
LAMP OR BASED
LED LAMP



CONVEX TRANSPARENT
COMPLETE BLACKOUT LENS CAP

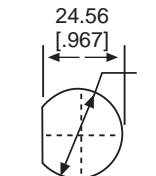
DIMMER TYPES



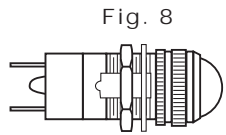
CONVEX TRANSPARENT
SEMI BLACKOUT LENS CAP

378, 379, 380 & 381 SERIES FOR 1" MOUNTING HOLE • WATERTIGHT

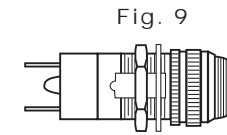
PART NO.*	MIL DESIG.	COLOR FIG.
378-3402-0131-203	LH80/1, LC21RN3	R 8
379-3402-0531-203	LH80/1, LC22RN3	R 9
380-3402-0131-203	LH80/1, LC23RN3	R 10
381-3402-0131-203	LH80/1, LC24RN3	R 11



RECOMMENDED
PANEL CUTOUT

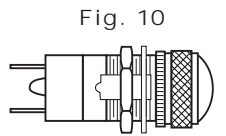


CONVEX TRANSPARENT
LENS CAP



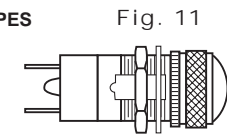
TORPEDO TRANSPARENT
LENS CAP

Uses:
S-6 DOUBLE
CONTACT
BAYONET BASE
INCANDESCENT
LAMP



CONVEX TRANSPARENT
COMPLETE BLACKOUT LENS CAP

DIMMER TYPES



CONVEX TRANSPARENT
SEMI BLACKOUT LENS CAP

* Cap and bases ordered separately; for complete military part number listing, please see military index on Pages 32 & 33

Neon and incandescent lamp information on Pages 35 and 36.

Based LED lamp information on Pages 37 through 40.

Dimensions in mm [inches]

X-ON Electronics

Largest Supplier of Electrical and Electronic Components

Click to view similar products for [Lamp Holders & Accessories](#) category:

Click to view products by [Dialight](#) manufacturer:

Other Similar products are found below :

[811730-1](#) [MS25041-6-327](#) [MS25041-8-327](#) [162-8430-0931-502-327](#) [PBMBN](#) [251-7538-15-504](#) [2802](#) [294502](#) [162-8430-0932-502-327](#) [183-9730-14-602](#) [21-16](#) [251-8738-15-504](#) [259-1930-29-801](#) [2707508753800](#) [350-0410-01-203](#) [367-8430-0971-503](#) [367-8430-09-802](#) [367-8430-09-810](#) [371-8738-14-504](#) [4610](#) [367-8430-0972-503](#) [367-8430-09-808](#) [367-8430-09-809](#) [492H412-9](#) [MS25256-2-327](#) [737AS15](#) [830-1430-14-503](#) [PBMBP](#) [851-1030-0001-504](#) [047340229301](#) [061131002301](#) [081041001100](#) [019310105301](#) [080320205303](#) [361-8836-0931-552](#) [1.71.209.001/0000](#) [1.71.209.001/0000](#) [1301910073](#) [04-12](#) [02-82](#) [26-07](#) [07-20](#) [101-8430-09-203](#) [177-8430-09-503](#) [162-8430-0937-502](#) [812-1030-09-506](#) [250-8738-14-504](#) [125-1310-11-103](#) [270-1930-702](#) [MS25041-7-327](#)