



513 SERIES SWITCHES

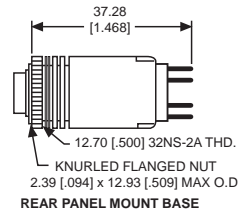
Caps Ordered Separately See Page 24.

MOMENTARY, SNAP ACTION
5 AMP-RESISTIVE; 2 AMP-INDUCTIVE; 125VAC/30VDC

Uses:
T-1 3/4 MIDGET
FLANGE BASE
INCANDESCENT LAMP

PART NO.	ACCEPTS CAP SIZE	CONTACT CIRCUIT	FIG
513-1601-604	ALL	SPDT	1
513-1606-001	5/8" SQ.	SPDT	2
513-1611-001	3/4" SQ.	SPDT	3
513-1701-604	ALL	TWO CIRCUIT	1
513-1706-001	5/8" SQ.	TWO CIRCUIT	2
513-1711-001	3/4" SQ.	TWO CIRCUIT	3

SIDE VIEW

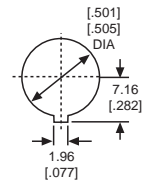


FRONT VIEW



FIG 1

MOUNTING HOLE



MOMENTARY ACTION
3 AMP; 125VAC/30VDC; GOLD PLATED CONTACT

PART NO.	ACCEPTS CAP SIZE	CONTACT CIRCUIT	FIG
513-0101-604	ALL	SPST N.O.	1
513-0106-001	5/8" SQ.	SPST N.O.	2
513-0109-001	3/4" X 1"	SPST N.O.	4
513-0110-001	3/4" X 1"	SPST N.O.	5
513-0111-001	3/4" SQ.	SPST N.O.	3
513-0301-604	ALL	TWO CIRCUIT	1
513-0306-001	5/8" SQ.	TWO CIRCUIT	2
513-0309-001	3/4" X 1"	TWO CIRCUIT	4
513-0310-001	3/4" X 1"	TWO CIRCUIT	5
513-0311-001	3/4" SQ.	TWO CIRCUIT	3

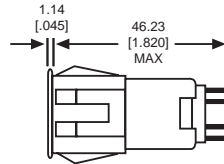


FIG 2

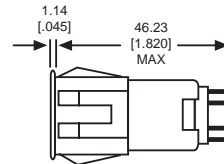


FIG 3

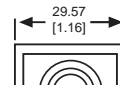
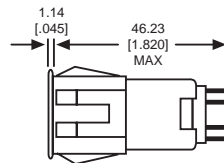
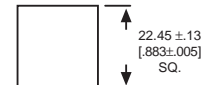


FIG 4

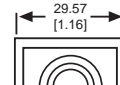
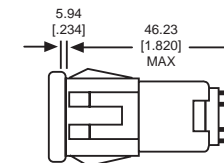
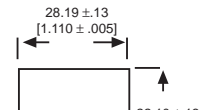


FIG 5

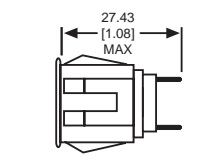
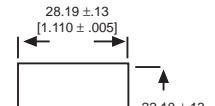


Fig. 6

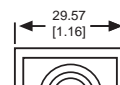
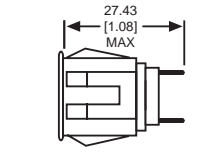
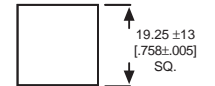


Fig. 7

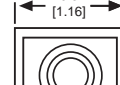
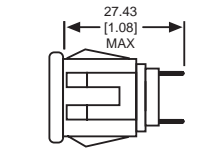
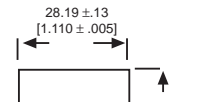


Fig. 8

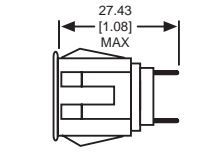
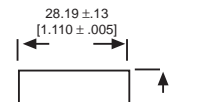


Fig. 9



MOMENTARY ACTION
5 TO 100 mA; 3 TO 12VDC; HEAVY GOLD PLATING

PART NO.	ACCEPTS CAP SIZE	CONTACT CIRCUIT	FIG
513-0601-604	ALL	TWO CIRCUIT	1
513-0606-001	5/8" SQ.	TWO CIRCUIT	2

ALTERNATE ACTION
5 AMP-RESISTIVE; 2 AMP-INDUCTIVE; 125VAC/30VDC

PART NO.	ACCEPTS CAP SIZE	CONTACT CIRCUIT	FIG
513-1401-604*	ALL	SPDT	1
513-1406-001**	5/8" SQ.	SPDT	2
513-1409-001**	3/4" X 1"	SPDT	4
513-1411-001**	3/4" SQ.	SPDT	3
513-1501-604*	ALL	TWO CIRCUIT	1
513-1506-001**	5/8" SQ.	TWO CIRCUIT	2
513-1511-001**	3/4" SQ.	TWO CIRCUIT	3

* Add 12.7 (.500) to length dimension
** Add 13.08 (.515) to length dimension

533 SERIES INDICATORS

PART NO.	ACCEPTS CAP SIZE	FIG
533-0601	5/8" SQ.	6
533-0901	3/4" X 1"	7
533-1001 (w/built-in barrier)	3/4" X 1"	8
533-1101	3/4" SQ.	9

Material & Finish: Base, Clear anodized aluminum;
Bezel, Heat resistant black plastic.

Neon and incandescent lamp information on Pages 35 and 36.

Dimensions in mm [inches]



X-ON Electronics

Largest Supplier of Electrical and Electronic Components

Click to view similar products for [Switch Fixings](#) category:

Click to view products by [Dialight](#) manufacturer:

Other Similar products are found below :

[893102000](#) [00-5150](#) [LZZ1A](#) [0098.9234](#) [61-9451.0](#) [M2PA-5011](#) [630155](#) [635401](#) [6PA113](#) [6PA147-E6](#) [6PA148-E6](#) [6PA32](#) [6PA9](#) [700106](#)
[700109](#) [700303A56](#) [700C1GRY](#) [700C2GRN](#) [70.362.4828.0](#) [704-6001](#) [704.960.9](#) [704.965.2](#) [704.965.6](#) [704.966.0](#) [7089-3](#) [710082-B11](#)
[71M1048](#) [757200264](#) [764300000](#) [MHU35](#) [MHU37](#) [807039-1](#) [825.003.011](#) [825.005.011](#) [825.053.011](#) [825.055.011](#) [826.000.071](#)
[827.020.011](#) [827.400.021](#) [835.900.023](#) [MML52C10C](#) [MML52E10C](#) [MML92HGH](#) [MML93K](#) [84211M02CNNS](#) [84212M02CNNS](#)
[84217A8.0LNOS](#) [842.500.011](#) [843.000.011](#) [843187-000](#)