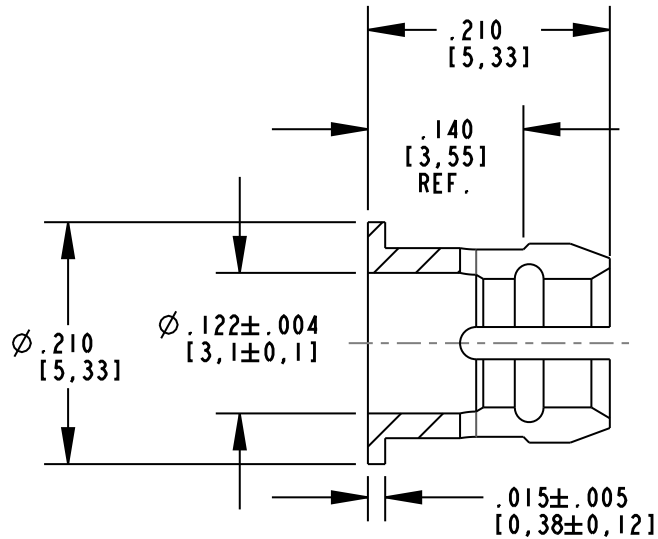


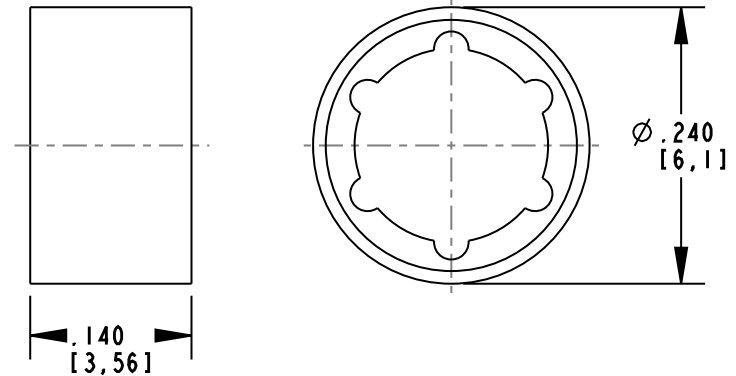
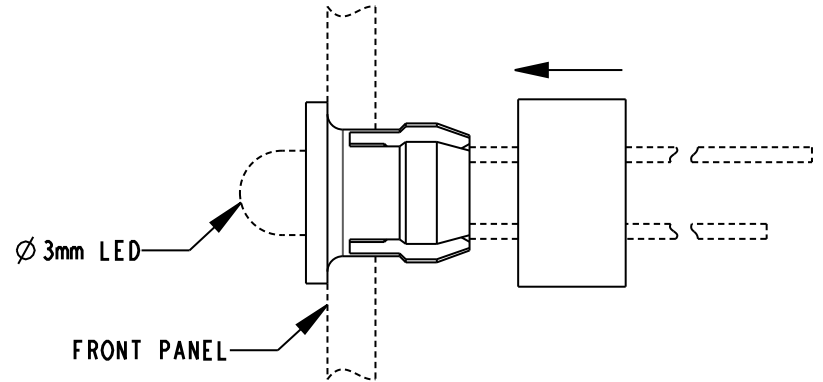
RoHS COMPLIANT 515-0006F

Part Numbers with the "F" suffix ending are RoHS Compliant. Packaging is marked with "RoHS Compliant" label or equivalent markings.

REV	ECN NO	REVISIONS	DRN	CKD	APP	DATE
A	—	NEW RELEASE	KLJ	MES	RP	10-31-08
B	—	UPDATED MODEL; $\phi .240$ WAS " $\phi .244$ "; $\phi .210$ WAS " $\phi .236$ "; $.210$ WAS " $.213 \pm .008$ "; $\phi .122 \pm .004$ WAS " $\phi .113 \pm .003$ "; ADDED .140 REF.	AJF	MES	NO	2-22-11



MOUNTING CLIP



RETAINING RING

NOTES:

1. KIT CONSISTS OF (1) MOUNTING CLIP AND (1) RETAINING RING.
2. MATERIAL: BLACK POLYACETAL (UL 94 HB FLAMMABILITY)
3. OPERATING TEMPERATURE: -40 TO +85 °C
4. DIALIGHT PART NUMBER: 515-0006F
5. MOUNTING HOLE: $\phi .169-.173$ " ON $.059-.098$ " THICK PANEL.
6. MOUNTING INSTRUCTIONS:
 1. SNAP MOUNTING CLIP INTO FRONT OF PANEL
 2. INSERT $\phi 3$ mm LED INTO MOUNTING CLIP FROM REAR OF PANEL
 3. SNAP RETAINING RING OVER MOUNTING CLIP FROM REAR
7. PACKAGING: MASTER BAG CONTAINS TWO (2) BAGS.
 BAG 1: 100 MOUNTING CLIPS
 BAG 2: 100 RETAINING RINGS

THIS DRAWING AND THE CONTENTS HEREIN ARE CONFIDENTIAL AND THE SOLE PROPERTY OF DIALIGHT. REPRODUCTION OF THIS DRAWING OR CONSTRUCTION OF ANY PARTS WITHIN THIS DRAWING ARE FORBIDDEN WITHOUT THE WRITTEN CONSENT OF DIALIGHT.		
SCALE: 6.000	DRAWING NUMBER	REV
ALL DIM'S IN: INCHES (MM)	C-17677	B
TOLERANCES: UNLESS OTHERWISE SPECIFIED	TITLE $\phi 3$ mm SNAP-IN MOUNTING CLIP RoHS COMPLIANT	
FRACTIONS: $\pm 1/64$	MATERIAL	
DECIMALS (.XX): $\pm .02$	-	
DECIMALS (.XXX): $\pm .010$	Dialight	
ANGLES: $\pm 3^\circ$	1501 ROUTE 34 SOUTH FARMINGDALE, NJ 07727	
FINISH: -	SHEET 1 OF 1 FAMILY TABLE:	
FSCM 83330		

X-ON Electronics

Largest Supplier of Electrical and Electronic Components

Click to view similar products for [Standard LEDs - Through Hole category](#):

Click to view products by [Dialight manufacturer](#):

Other Similar products are found below :

[LTL-10254W](#) [LTL-1214A](#) [LTL-2231AT](#) [LTL-3251A](#) [LTL-4262N](#) [LTL-433P](#) [LTL-5234](#) [LTL87HTBK](#) [LTL-87HD4B](#) [HLMP-EL30-PS0DD](#) [1L0532V23G0TD001](#) [NSPW500CS](#) [LD CQDP-1U3U-W5-1-K](#) [LP379PPG1C0G0300001](#) [SLR-342MC3F](#) [SLX-LX3044GD](#) [SLX-LX3044ID](#) [SLX-LX3044YD](#) [1.90690.3330000](#) [SSS-LX4673ID-410B](#) [1L0532Y24I0TD001](#) [264-7SYGD/S530-E2](#) [HLMP-1301-G00FG](#) [HLMP1385](#) [LTL-10224W](#) [LTL-1224A](#) [LTL-1234A](#) [LTL-2251AT](#) [LTL-403HR](#) [LTL-4222](#) [LU7-E-B](#) [4380H1](#) [HLMP-3962-F0002](#) [HLMP-GG15-R0000](#) [L53SRC/E-Z](#) [L-7679C1ZGC](#) [4302T1-5V](#) [4306D23](#) [4363D1/5](#) [WP1503SRC/J4](#) [WP153YDT](#) [WP1543SGC](#) [WP1543SRC/D](#) [WP1543SURC](#) [WP53MGD](#) [WP7113HD](#) [WP7113MBD](#) [WP7113MGC](#) [WP7143SEC/H](#) [Z-221A](#)