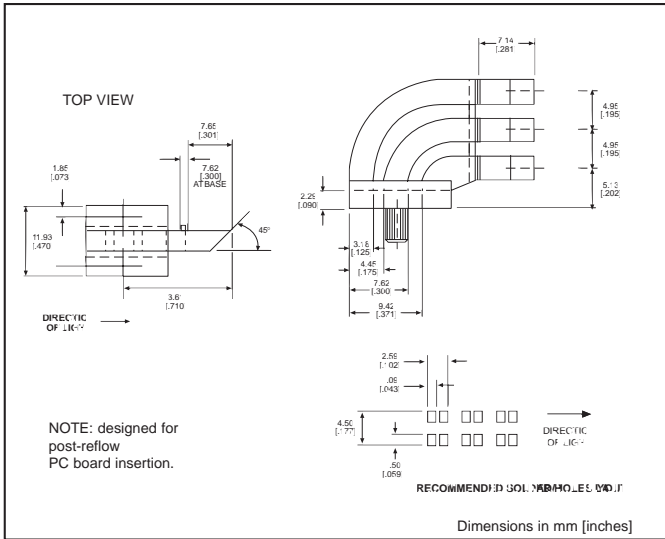


# 0.125 Square

## microLED® Optopipe®

### Optical Light Pipe, Tri-high with 45° Output 515-1009

# Dialight



## MicroLED SMT LEDs for use with 515-1009

### PART NO. PAGE #

| Recommended  | PAGE #      |
|--------------|-------------|
| 597-3xx1-2xx | 1-21        |
| 597-77x1-2xx | 1-23 & 1-24 |

### Alternatives

|              |             |
|--------------|-------------|
| 597-3xxx-4xx | 1-27 & 1-28 |
| 597-3xx1-4xx | 1-28        |
| 597-3xx1-5xx | 1-30        |
| 597-5004-4xx | 1-26        |
| 597-5x11-4xx | 1-27        |
| 597-5x12-4xx | 1-26        |
| 597-5202-4xx | 1-27        |
| 597-52x3-4xx | 1-26        |
| 597-77x1-5xx | 1-31        |

LED alternatives may not produce optimum light output

## Features

- High transmissivity polycarbonate material
- UL94V-0 compliance
- ESD protection (circuit isolation from front panel)
- Allows tri-level SMT indicators
- Secures to PCB by press-fit

## LED Data

For absolute maximum ratings and other electrical and optical data on the recommended LEDs, refer to LED data sheets.

## Operating/Storage Temperature

-30°C to +100°C

## Dialight Optopipe® Light Pipe Description

This Optopipe® is designed to have its light viewed on a 45° angle rather than head-on. It has its light outputs vertical-ly spaced at 0.202" from the PCB to the first element, and then 0.195" between the elements. Each element has a shallow V-groove to enable easy removal of unwanted light pipe elements. This Optopipe® is held in place by the 2 press-fit pins on the bottom of the device. Various molded-in optical features evenly illuminate the light pipe's angled emitting surface. The recommended light sources are Dialight's 597 Series PLCC-2 or PLCC-4 Type SMT LEDs. The light pipe material is water clear transmissive polycarbonate rated UL94-V0, and has a 35% oxygen index.

Dialight can provide custom Optopipe® solutions for your applications.

## X-ON Electronics

Largest Supplier of Electrical and Electronic Components

*Click to view similar products for [LED Light Pipes](#) category:*

*Click to view products by [Dialight](#) manufacturer:*

Other Similar products are found below :

[1367627-1](#) [SLP3-300-450-F](#) [SLP3-400-450-R](#) [LPA-C011301S-23](#) [LPA-C011301S-6](#) [LPF-C011306S](#) [FLP25-1.95](#) [VLP-640-F](#) [LPA-C011301S-5.4](#) [LPA-C041301S-2](#) [LPA-R051171S-12](#) [LPA-S011331S](#) [515-1027-803F](#) [515-1217F](#) [SLP3-150-300-R](#) [SLP3-500-450-R](#) [515-1064-810F](#) [FLPV-SG](#) [BDL-1187](#) [7511A41](#) [7511A87-500](#) [FLPV-SBC](#) [5151064802F](#) [5151-192-0055-0DF](#) [LPF-R011340S](#) [515-1166-801F](#) [FLPF-6.0](#) [SLP3-350-200-F](#) [PM4-C1522-3.70](#) [LC-11.25](#) [CLP-1214](#) [515-1064-808F](#) [FLX3\\_05](#) [515-1192-0025-0DF](#) [515-1192-80-3DF](#) [PBLP-1001-1](#) [LC2-4.1](#) [LPC062CTP](#) [LSS024CTP](#) [LPC088CTP](#) [SLP3-150-300-F](#) [2202312](#) [515-1302-0500F](#) [RLP1-200-800](#) [RLP1-400-500](#) [LPA-C011301S-15](#) [2202311](#) [SLP3-150-450-R](#) [7511A53](#) [1270.1003](#)