

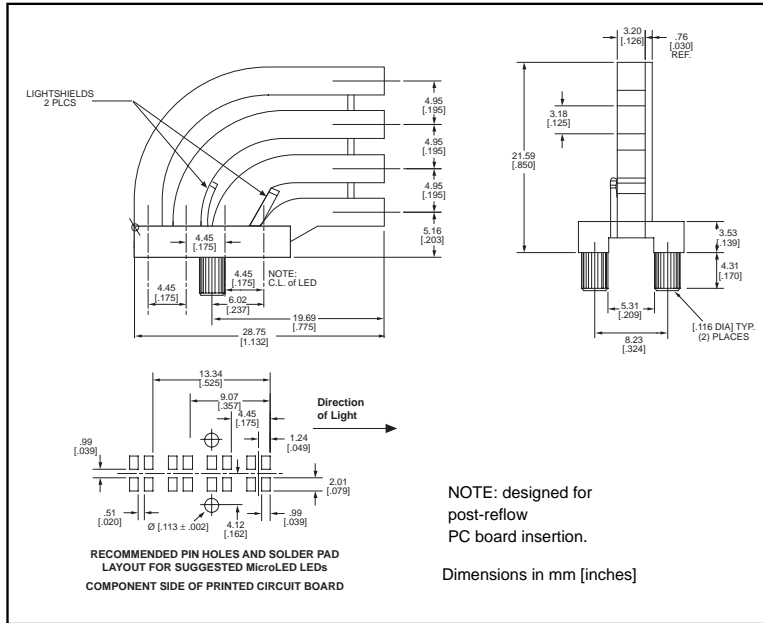
NEW

3mm Square microLED[®] Optopipe™

Optical Light Pipe, Quad High

Dialight

515-1023-803



Recommended MicroLED SMT LEDs for use with 515-1023-803

2

PART NO.	COLOR	PAGE #
597-3001-1xx	Red	1-19
597-3111-1xx	AlGaAs Red	1-19
597-3211-1xx	Orange	1-19
597-3301-1xx	Green	1-19
597-3401-1xx	Yellow	1-19
597-7701-1xx	Red/Green	1-20
597-7721-1xx	Yellow/Green	1-20
597-7731-1xx	Red/Yellow	1-20

Features

- High transmissivity polycarbonate material
- UL94V-0 compliance
- ESD protection (circuit isolation from front panel)
- Wide viewing angle
- Arrays reduce insertion costs
- Allows quad level SMT indicators
- Secures to PCB by press-fit

LED Data

For absolute maximum ratings and other electrical and optical data on the recommended LEDs, refer to LED data sheets.

Operating/Storage Temperature

-30°C to +100°C

Dialight Optopipe Light Pipe Description

This Optopipe™ has a relatively low vertical height considering the number of light pipe elements. The element's square emitting surfaces are vertically spaced 0.203" from the PCB to the first element, and then 0.195" between each of the other elements. This Optopipe™ is held in place by 2 press-fit pins on the bottom of the device. The wide base offers added stability to the installed part. The light pipe is not attached to the panel at any point, but protrudes through holes in the panel. This Optopipe™ was specifically designed to accept Dialight's 597 Series Type 1210 LEDs. The light pipe material is water clear transmissive polycarbonate rated UL94-V0, and has a 35% oxygen index.

Dialight can provide custom Optopipe™ solutions for your applications.

X-ON Electronics

Largest Supplier of Electrical and Electronic Components

Click to view similar products for [LED Light Pipes](#) category:

Click to view products by [Dialight](#) manufacturer:

Other Similar products are found below :

[1367627-1](#) [SLP3-300-450-F](#) [SLP3-400-450-R](#) [LPA-C011301S-23](#) [LPA-C011301S-6](#) [LPF-C011306S](#) [FLP25-1.95](#) [VLP-640-F](#) [LPA-C011301S-5.4](#) [LPA-C041301S-2](#) [LPA-R051171S-12](#) [LPA-S011331S](#) [515-1027-803F](#) [515-1217F](#) [SLP3-150-300-R](#) [SLP3-500-450-R](#) [515-1064-810F](#) [FLPV-SG](#) [BDL-1187](#) [7511A41](#) [7511A87-500](#) [FLPV-SBC](#) [5151064802F](#) [5151-192-0055-0DF](#) [LPF-R011340S](#) [515-1166-801F](#) [FLPF-6.0](#) [SLP3-350-200-F](#) [PM4-C1522-3.70](#) [LC-11.25](#) [CLP-1214](#) [515-1064-808F](#) [FLX3_05](#) [515-1192-0025-0DF](#) [515-1192-80-3DF](#) [PBLP-1001-1](#) [LC2-4.1](#) [LPC062CTP](#) [LSS024CTP](#) [LPC088CTP](#) [SLP3-150-300-F](#) [2202312](#) [515-1302-0500F](#) [RLP1-200-800](#) [RLP1-400-500](#) [LPA-C011301S-15](#) [2202311](#) [SLP3-150-450-R](#) [7511A53](#) [1270.1003](#)