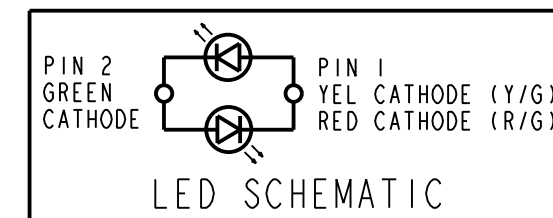
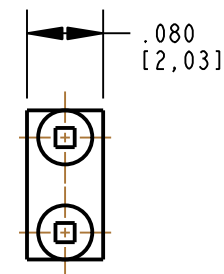
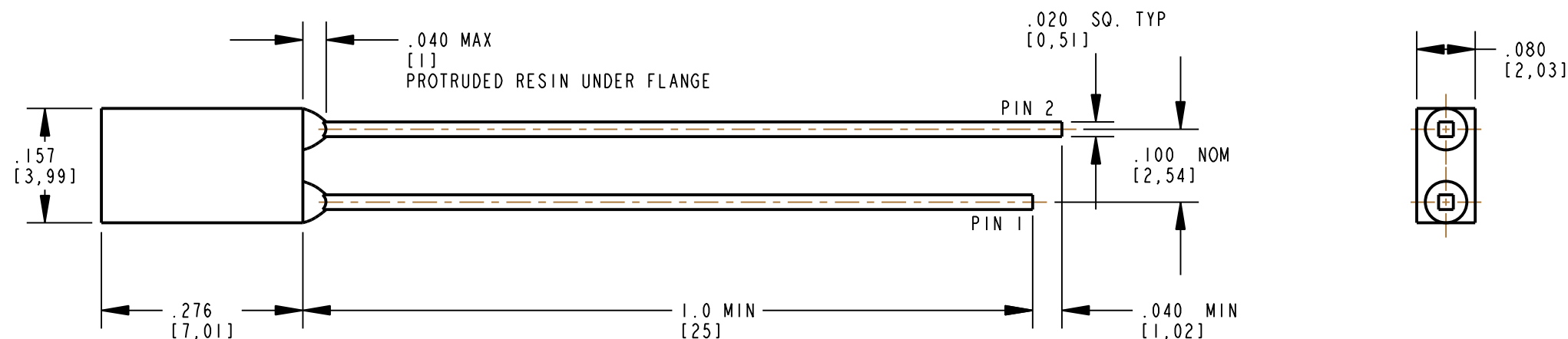


DIALIGHT PART NUMBER	COLOR
521-9640F	YELLOW/GREEN
521-9743F	RED/GREEN

REV	ECN NO	REVISIONS	DRN	CKD	APP	DATE
A	—	NEW RELEASE	KLJ	MES	N.O.	2-7-08
B	—	ADDED P/N 521-9743F.	KLJ	ALV	N.O.	6-16-09



ABSOLUTE MAXIMUM RATINGS AT 25°C AMBIENT	Y/G BI-COLOR		R/G BI-COLOR		UNITS
	YELLOW	GREEN	RED	GREEN	
POWER DISSIPATION	60	100	100	100	mW
CONTINUOUS FORWARD CURRENT	20	30	30	30	mA
PEAK FORWARD CURRENT (1/10 DUTY CYCLE, 0.1ms PULSE WIDTH)	80	120	120	120	mA
DERATE LINEARLY FROM 50°C	0.25	0.4	0.4	0.4	mA/°C
REVERSE VOLTAGE (I <sub>r</sub> =100 μA)	5				V
STORAGE TEMPERATURE	-55 TO +100				°C
OPERATING TEMPERATURE	-55 TO +100				°C
SOLDERING TEMPERATURE, 1/16" FROM BODY FOR 5 SEC	260				°C

OPERATING CHARACTERISTICS AT 25°C AMBIENT							
CHARACTERISTICS	UNITS	COLOR	VALUE			TEST CONDITIONS	
			MIN	TYP	MAX		
LUMINOUS INTENSITY	mcd	Y/G BI-COLOR	YELLOW	1.1	3.7	—	I <sub>f</sub> = 20 mA
			GREEN	1.7	5.6	—	
		R/G BI-COLOR	RED	1.7	5.6	—	
			GREEN	1.7	5.6	—	
FORWARD VOLTAGE	V	Y/G BI-COLOR	YELLOW	—	2.1	2.6	I <sub>f</sub> = 20 mA
			GREEN	—	2.1	2.6	
		R/G BI-COLOR	RED	—	2.0	2.8	
			GREEN	—	2.1	2.8	
REVERSE CURRENT	μA	ALL	—	—	100	V <sub>r</sub> = 5 V	
DOMINANT WAVELENGTH	nm	Y/G BI-COLOR	YELLOW	583	586	589	
			GREEN	—	569	—	
		R/G BI-COLOR	RED	—	621	—	
			GREEN	—	569	—	
PEAK WAVELENGTH	nm	Y/G BI-COLOR	YELLOW	—	585	—	
			GREEN	—	565	—	
		R/G BI-COLOR	RED	—	630	—	
			GREEN	—	565	—	
VIEWING ANGLE (2 Θ <sub>1/2</sub> )	DEG	ALL	—	140	—		

NOTES:

- LED LENS COLOR: WHITE DIFFUSED
- LEAD SPACING IS MEASURED WHERE LEADS EMERGE FROM PACKAGE.
- PIN NUMBERS FOR REFERENCE ONLY, DESIGNATION NON-EXISTENT ON PART.
- DIALIGHT PART NUMBERS: 521-9640F, 521-9743F
- THIS ASSEMBLY CONTAINS ELECTROSTATIC DISCHARGE SENSITIVE DEVICES (ESDS). MAINTAIN ALL PRECAUTIONARY MEASURES DURING ASSEMBLY, HANDLING, AND STORAGE IN ACCORDANCE WITH IPC-A-610.

**RoHS COMPLIANT 521-9640F & 521-9743F**

Part Numbers with the "F" suffix ending are RoHS Compliant. Packaging is marked with "RoHS Compliant" label or equivalent markings. Parts can be wave soldered, dip soldered or hand soldered using typical lead-free soldering process with max 260°C temp. for 5 sec.



**ATTENTION:**  
OBSERVE PRECAUTIONS FOR  
HANDLING ELECTROSTATIC  
SENSITIVE DEVICES

THIS DRAWING AND THE CONTENTS HEREIN ARE CONFIDENTIAL AND THE SOLE PROPERTY OF DIALIGHT. REPRODUCTION OF THIS DRAWING OR CONSTRUCTION OF ANY PARTS WITHIN THIS DRAWING ARE FORBIDDEN WITHOUT THE WRITTEN CONSENT OF DIALIGHT.		
SCALE: 5.000	DRAWING NUMBER	REV
ALL DIM'S IN: INCHES (MM)	C-17590	B
TOLERANCES: UNLESS OTHERWISE SPECIFIED	TITLE 2mm x 4mm Y/G RECTANGULAR LED	
FRACTIONS: ±1/64 DECIMALS (.XX): ±.02 DECIMALS (.XXX): ±.010	MATERIAL -	
ANGLES: ±1°	FINISH: -	
FSCM 83330	1501 ROUTE 34 SOUTH FARMINGDALE, NJ 07727	
SHEET 1 OF 1 FAMILY TABLE:		

## X-ON Electronics

Largest Supplier of Electrical and Electronic Components

*Click to view similar products for [Standard LEDs - Through Hole category:](#)*

*Click to view products by [Dialight manufacturer:](#)*

Other Similar products are found below :

[LTL-10254W](#) [LTL-1214A](#) [LTL-2231AT](#) [LTL-3251A](#) [LTL-4262N](#) [LTL-433P](#) [LTL-5234](#) [LTL87HTBK](#) [LTL-87HD4B](#) [HLMP-EL30-PS0DD](#) [1L0532V23G0TD001](#) [NSPW500CS](#) [LD CQDP-1U3U-W5-1-K](#) [LP379PPG1C0G0300001](#) [SLR-342MC3F](#) [SLX-LX3044GD](#) [SLX-LX3044ID](#) [SLX-LX3044YD](#) [1.90690.3330000](#) [SSS-LX4673ID-410B](#) [1L0532Y24I0TD001](#) [264-7SYGD/S530-E2](#) [HLMP-1301-G00FG](#) [HLMP1385](#) [LTL-10224W](#) [LTL-1224A](#) [LTL-1234A](#) [LTL-2251AT](#) [LTL-403HR](#) [LTL-4222](#) [LU7-E-B](#) [4380H1](#) [HLMP-3962-F0002](#) [HLMP-GG15-R0000](#) [L53SRC/E-Z](#) [L-7679C1ZGC](#) [4302T1-5V](#) [4306D23](#) [4363D1/5](#) [WP1503SRC/J4](#) [WP153YDT](#) [WP1543SGC](#) [WP1543SRC/D](#) [WP1543SURC](#) [WP53MGD](#) [WP7113HD](#) [WP7113MBD](#) [WP7113MGC](#) [WP7143SEC/H](#) [Z-221A](#)