

PART NUMBER	LED COLOR	DIMENSION "A"
550-0507-100F	RED DIFFUSED (5 V)	.197±.015
550-0707-100F	GREEN DIFFUSED (5 V)	.197±.015

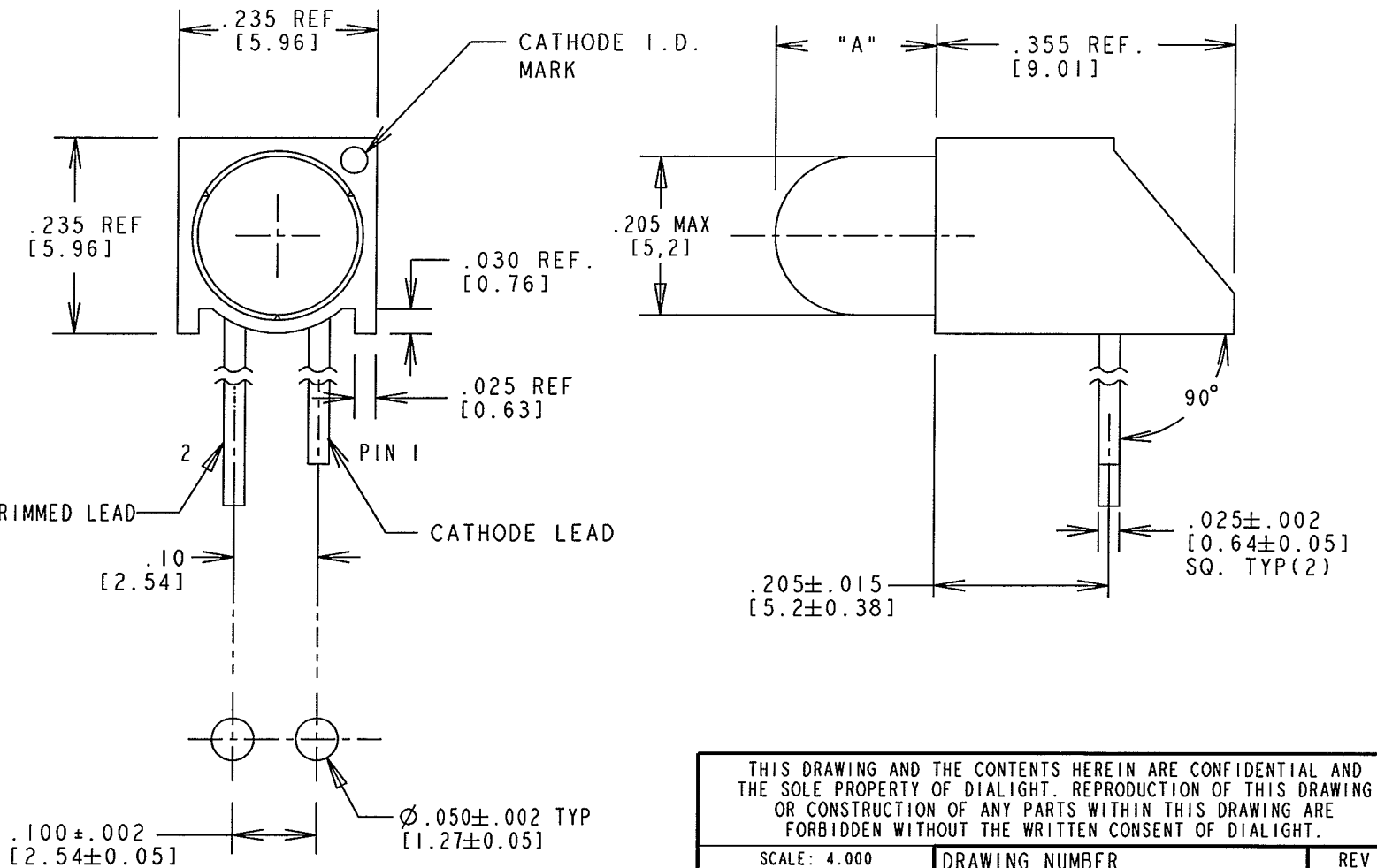
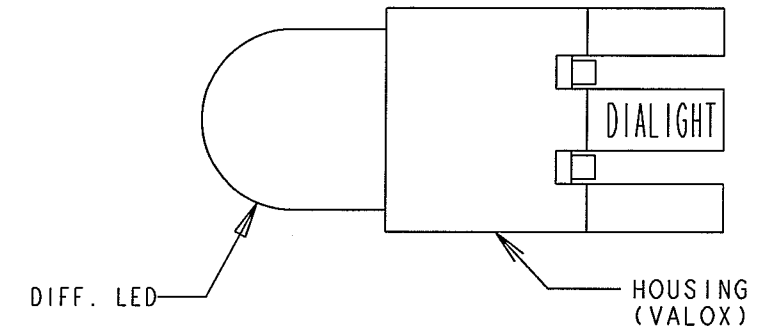
REV	ECN NO	REVISIONS	DRN	CKD	APP	DATE
A	—	NEW RELEASE	SM	MES	N.O.	10-11-06
B	—	".205 MAX" WAS ".119"; ".025±.002" WAS ".020±.002"; ".050±.002" WAS ".043±.002"; REMOVED INCORRECT ABS MAX RATING TABLE; ADDED LINEAR DE-RATION SPEC; FOR RED DIFF LED: MIN LUM INT "2.1" WAS "1.0"; REMOVED TYP LUM INT; TYP IF "10" WAS "13"; MAX IF "15" WAS "20"; PEAK WAVELENGTH "635" WAS "655"; ADDED ESD SYMBOL; ADDED LED SCHEMATIC; ADDED PIN REFS; ADDED NOTES 4, 5, & 6.	KLJ	M.D.	JA	5/2/08

NOTES:

- LAMP MUST BE SEATED ALL THE WAY DOWN INTO HOUSING, BENDS MUST BE TIGHT, NO LONGITUDINAL TRAVEL ALONG AXIS ALLOWED.
- LED LEAD DIMENSIONS SHOWN ARE MEASURED AT HOUSING EXIT.
- DIALIGHT PART NUMBERS: 550-0507-100F, 550-0707-100F
- LEADS TO FIT INTO HOLES SPACED AS PER PATTERN.
- PIN NUMBERS FOR REFERENCE ONLY, DESIGNATION NON-EXISTENT ON PART.
- THIS ASSEMBLY CONTAINS ELECTROSTATIC DISCHARGE SENSITIVE DEVICES (ESDS). MAINTAIN ALL PRECAUTIONARY MEASURES DURING ASSEMBLY, HANDLING, AND STORAGE IN ACCORDANCE WITH IPC-A-610.



**ATTENTION:**  
OBSERVE PRECAUTIONS FOR  
HANDLING ELECTROSTATIC  
SENSITIVE DEVICES



RECOMMENDED HOLE PATTERN GAUGE

550-0507-100F, 550-0707-100F WITH INTEGRAL RESISTOR FOR 5 VOLT. APPLICATION.

OPERATING CHARACTERISTICS AT 25°C AMBIENT

CHARACTERISTICS	COLOR	MIN	TYP	MAX	UNITS	TEST CONDITIONS
LUMINOUS INTENSITY	RED DIFFUSED	2.1			mcd	V <sub>F</sub> = 5 V
	GREEN DIFFUSED	2.0	8.0			
REVERSE VOLTAGE	RED DIFFUSED			100	μA	V <sub>R</sub> = 5 V
	GREEN DIFFUSED			100		
FORWARD CURRENT	RED DIFFUSED		10	15	mA	V <sub>R</sub> = 5 V
	GREEN DIFFUSED		12	15		
PEAK WAVELENGTH	RED DIFFUSED		635		nm	MEASURED AT PEAK
	GREEN DIFFUSED		565			
VIEWING ANGLE	RED DIFFUSED		60		Degree	
	GREEN DIFFUSED		60			

ABSOLUTE MAXIMUM RATING AT 25°C AMBIENT	UNITS	RED DIFFUSED	GREEN DIFFUSED
DC FORWARD VOLTAGE (T <sub>A</sub> = 25 °C)	V	7.5	7.5
REVERSE VOLTAGE	V	5	5
DERATE LINEARLY FROM 50°C	V/°C	0.071	—
LEAD SOLDERING TEMPERATURE FOR 5 SEC.	°C	260	260
OPERATING TEMPERATURE	°C	-40 TO +85	-20 TO +85
STORAGE TEMPERATURE	°C	-55 TO +100	-55 TO +100

**RoHS Compliant 550-XX07-100F**

Part Numbers with the "F" suffix ending are RoHS Compliant.  
Example: 550-0507-100F  
Packaging is marked with "RoHS Compliant" label or equivalent markings.  
Parts can be wave soldered, dip soldered or hand soldered using typical lead-free soldering process with max 260°C temp. for 5 sec.

THIS DRAWING AND THE CONTENTS HEREIN ARE CONFIDENTIAL AND THE SOLE PROPERTY OF DIALIGHT. REPRODUCTION OF THIS DRAWING OR CONSTRUCTION OF ANY PARTS WITHIN THIS DRAWING ARE FORBIDDEN WITHOUT THE WRITTEN CONSENT OF DIALIGHT.

SCALE: 4.000	DRAWING NUMBER	REV
ALL DIM'S IN: INCHES (MM)	C-17427	B
TOLERANCES: UNLESS OTHERWISE SPECIFIED	TITLE	
FRACTIONS: ±1/64	5mm CBI WITH STANDOFFS	
DECIMALS (.XX): ±.01	UNTRIMMED LEDS - RoHS COMPLIANT	
DECIMALS (.XXX): ±.005	MATERIAL	
DECIMALS (.XXXX): ±.0005		
ANGLES: ±1°		
FINISH:	<b>Dialight</b>	1501 ROUTE 34 SOUTH FARMINGDALE, NJ 07727
FSCM 83330	SHEET 1 OF 1	FAMILY TABLE:

## X-ON Electronics

Largest Supplier of Electrical and Electronic Components

*Click to view similar products for [LED Circuit Board Indicators](#) category:*

*Click to view products by [Dialight](#) manufacturer:*

Other Similar products are found below :

[568-0701-841F](#) [LTL-4221NH129](#) [LTL-42DGNMHDP1](#) [HLMP1521101](#) [HLMP1523802F](#) [HLMP1700101F](#) [HLMP1700104F](#) [BHA-1564-G](#)  
[SMF-HM1530YD-305](#) [SSF-LXH409SYSUGW](#) [AM2520EHSGD](#) [HLMP1301104F](#) [HLMP1385101F](#) [HLMP1421101](#) [HLMP1503103F](#)  
[HLMP1503104F](#) [HLMP1700102F](#) [HLMP1700106F](#) [HLMP1700107F](#) [HLMP1790101F](#) [HLMP1790103F](#) [LTL-4211NHBP](#) [5390H3](#) [551-](#)  
[2802F](#) [552-0794-810F](#) [553-0222-812F](#) [HT3-BC-T](#) [564-0700-831F](#) [WP59BLGEW](#) [103-3101-1231-403](#) [5502407811F](#) [550-3007-810F](#) [551-](#)  
[3307MF](#) [552080-1](#) [573-2399-100F](#) [592-2020-302F](#) [5932-927-2701-3F](#) [SMF-HM1530SRD-509](#) [SSF-LXH100MID](#) [SSF-LXH2103SRSDRP](#)  
[SSF-LXH555USBW](#) [WP937SB/4YGW](#) [WP937EB2EGW](#) [551-0312-802F](#) [553-0110-802F](#) [561-5501-050F](#) [6202T3-5VLC](#) [LTL-307G08A-D](#)  
[CMD57164](#) [568-2231-313F](#)