

DIALIGHT P/N	LED COLOR	LENS TYPE	VIEWING ANGLE (2θ1/2)
550-5507-802F	RED	WATER CLEAR	20 °
550-5607-803F	GREEN	WATER CLEAR	20 °
550-5707-802F	YELLOW	WATER CLEAR	25 °

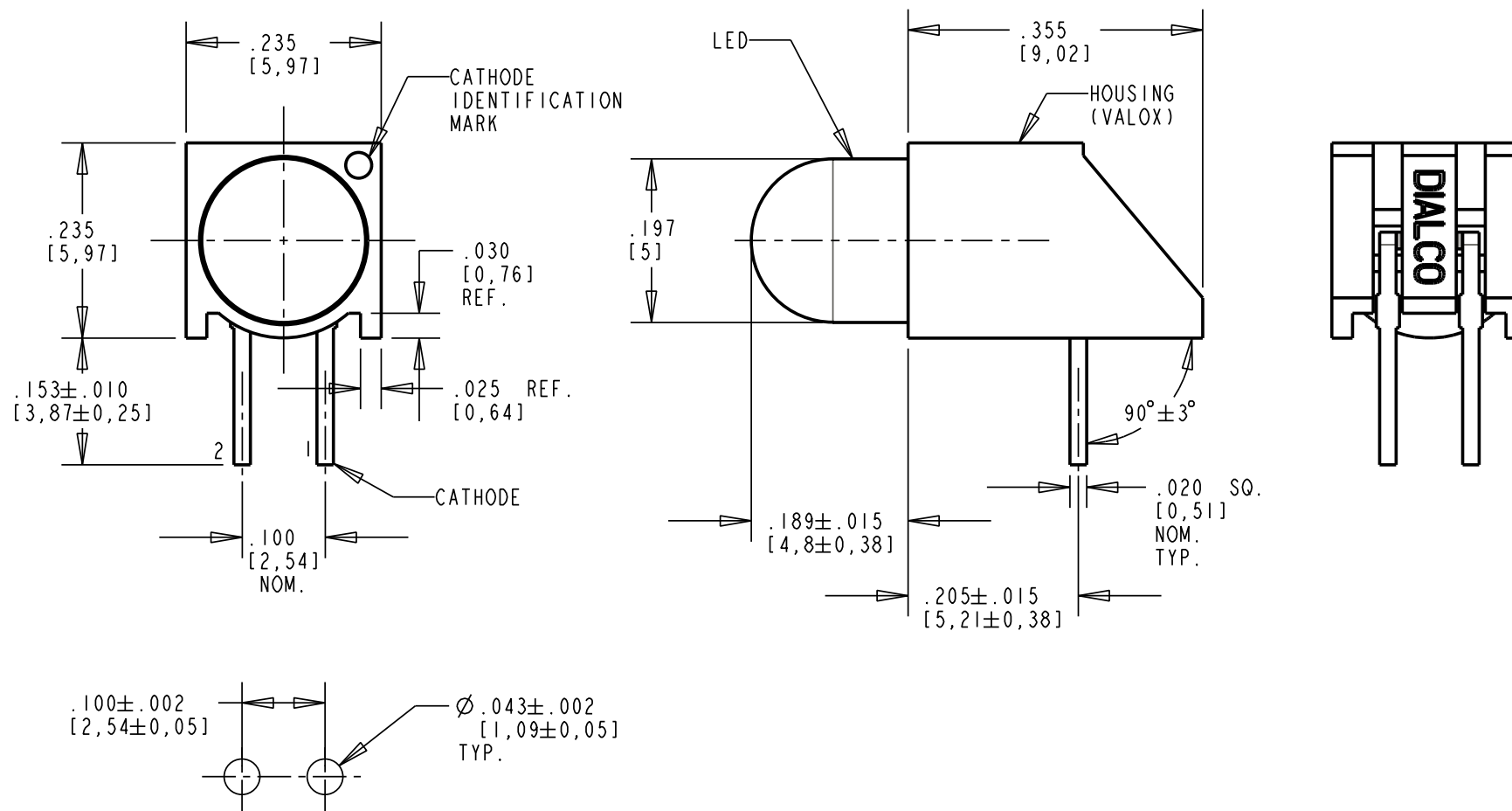
REV	ECN NO	REVISIONS	DRN	CKD	APP	DATE
A	—	NEW RELEASE	TWC			

NOTES:

- LEADS TO FIT INTO HOLE PATTERN AS SHOWN.
- LED LEAD DIMENSIONS SHOWN ARE MEASURED AT HOUSING EXIT.
- PIN NUMBERS FOR REFERENCE ONLY, DESIGNATION NON-EXISTENT ON PARTS.
- DIALIGHT PART NUMBERS: 550-5507-802F
550-5607-803F
550-5707-802F
- THIS ASSEMBLY CONTAINS ELECTROSTATIC DISCHARGE SENSITIVE DEVICES (ESDS). MAINTAIN ALL PRECAUTIONARY MEASURES DURING ASSEMBLY, HANDLING AND STORAGE IN ACCORDANCE WITH IPC-A-610.

ABSOLUTE MAXIMUM RATINGS AT T _a = 25 °C				
PARAMETER	RED	GREEN	YELLOW	UNITS
POWER DISSIPATION	100	105	125	mW
DC FORWARD CURRENT	30	30	50	mA
PEAK FORWARD CURRENT	155	150	200	mA
DERATE LINEARLY FROM 50 °C			.70	mA/°C
REVERSE VOLTAGE	5			V
OPERATING TEMPERATURE	-40 TO +85		-30 TO +85	°C
STORAGE TEMPERATURE	-40 TO +85		-40 TO +100	°C
LEAD SOLDERING TEMPERATURE FOR 5 SEC.	260			°C

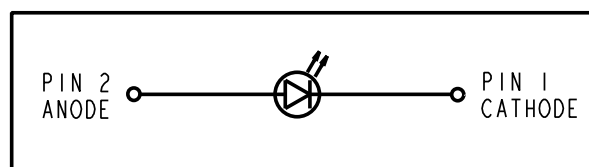
ELECTRICAL/OPTICAL CHARACTERISTICS AT T _a = 25 °C							
SYMBOL	PARAMETER	COLOR	MIN.	TYP.	MAX.	UNITS	TEST CONDITIONS
λ _{PEAK}	PEAK WAVELENGTH	RED		660		nm	I _f = 20 mA
		GREEN		574			
		YELLOW		591			
λ _D	DOMINATE WAVELENGTH	RED		640		nm	I _f = 20 mA
		GREEN		570			
		YELLOW	585		592		
Δλ _{1/2}	SPECTRAL LINE HALFWIDTH	RED		20		nm	I _f = 20 mA
		GREEN		20			
		YELLOW		15			
C	CAPACITANCE	RED		45		pF	V _f = 0 V f = 1 MHz
		GREEN		15			
		YELLOW		40			
V _f	FORWARD VOLTAGE	RED		1.85	2.5	V	I _f = 20 mA
		GREEN		2.1	2.5		
		YELLOW		1.9	2.5		
I _r	REVERSE CURRENT	RED			10	μA	V _r = 5 V
		GREEN			10		
		YELLOW			100		
I _v	LUMINOUS INTENSITY	RED	900	1000		mcd	I _f = 20 mA
		GREEN	380	900			
		YELLOW	610	2500			



RECOMMENDED HOLE PATTERN



ATTENTION:
OBSERVE PRECAUTIONS FOR
HANDLING ELECTROSTATIC
SENSITIVE DEVICES



RoHS Compliant 550-XX07-8XXF

Part Numbers with the "F" suffix ending are RoHS Compliant.
Example: 550-5507-802F
Packaging is marked with "RoHS Compliant" label or equivalent markings.
Parts can be wave soldered, dip soldered or hand soldered using typical lead-free soldering process with max 260°C temp. for 5 sec.

THIS DRAWING AND THE CONTENTS HEREIN ARE CONFIDENTIAL AND THE SOLE PROPERTY OF DIALIGHT. REPRODUCTION OF THIS DRAWING OR CONSTRUCTION OF ANY PARTS WITHIN THIS DRAWING ARE FORBIDDEN WITHOUT THE WRITTEN CONSENT OF DIALIGHT.		
SCALE: 5.000	DRAWING NUMBER	REV
ALL DIM'S IN: INCHES (MM)	C-17425	A
TOLERANCES: UNLESS OTHERWISE SPECIFIED	TITLE T-1 3/4 (5 mm) LED LAMP RoHS COMPLIANT	
FRACTIONS: ±1/64	MATERIAL N/A	
DECIMALS (.XX): ±.01	FINISH: N/A	
DECIMALS (.XXX): ±.005	Dialight 1501 ROUTE 34 SOUTH FARMINGDALE, NJ 07727	
DECIMALS (.XXXX): ±.0005	FSCM 83330	
ANGLES: ±1°	SHEET 1 OF 1 FAMILY TABLE:	

X-ON Electronics

Largest Supplier of Electrical and Electronic Components

Click to view similar products for [LED Circuit Board Indicators](#) category:

Click to view products by [Dialight](#) manufacturer:

Other Similar products are found below :

[568-0701-841F](#) [LTL-4221NH129](#) [LTL-42DGNMHDP1](#) [HLMP1521101](#) [HLMP1523802F](#) [HLMP1700101F](#) [HLMP1700104F](#) [BHA-1564-G](#)
[SMF-HM1530YD-305](#) [SSF-LXH409SYSUGW](#) [AM2520EHSGD](#) [HLMP1301104F](#) [HLMP1385101F](#) [HLMP1421101](#) [HLMP1503103F](#)
[HLMP1503104F](#) [HLMP1700102F](#) [HLMP1700106F](#) [HLMP1700107F](#) [HLMP1790101F](#) [HLMP1790103F](#) [LTL-4211NHBP](#) [5390H3](#) [551-](#)
[2802F](#) [552-0794-810F](#) [553-0222-812F](#) [HT3-BC-T](#) [564-0700-831F](#) [WP59BLGEW](#) [103-3101-1231-403](#) [5502407811F](#) [550-3007-810F](#) [551-](#)
[3307MF](#) [552080-1](#) [573-2399-100F](#) [592-2020-302F](#) [5932-927-2701-3F](#) [SMF-HM1530SRD-509](#) [SSF-LXH100MID](#) [SSF-LXH2103SRSDRP](#)
[SSF-LXH555USBW](#) [WP937SB/4YGW](#) [WP937EB2EGW](#) [551-0312-802F](#) [553-0110-802F](#) [561-5501-050F](#) [6202T3-5VLC](#) [LTL-307G08A-D](#)
[CMD57164](#) [568-2231-313F](#)