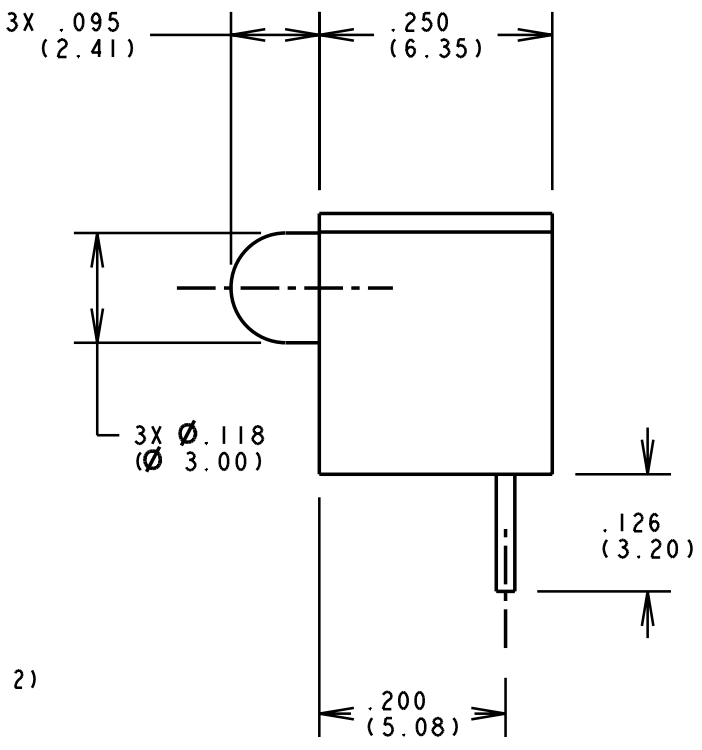
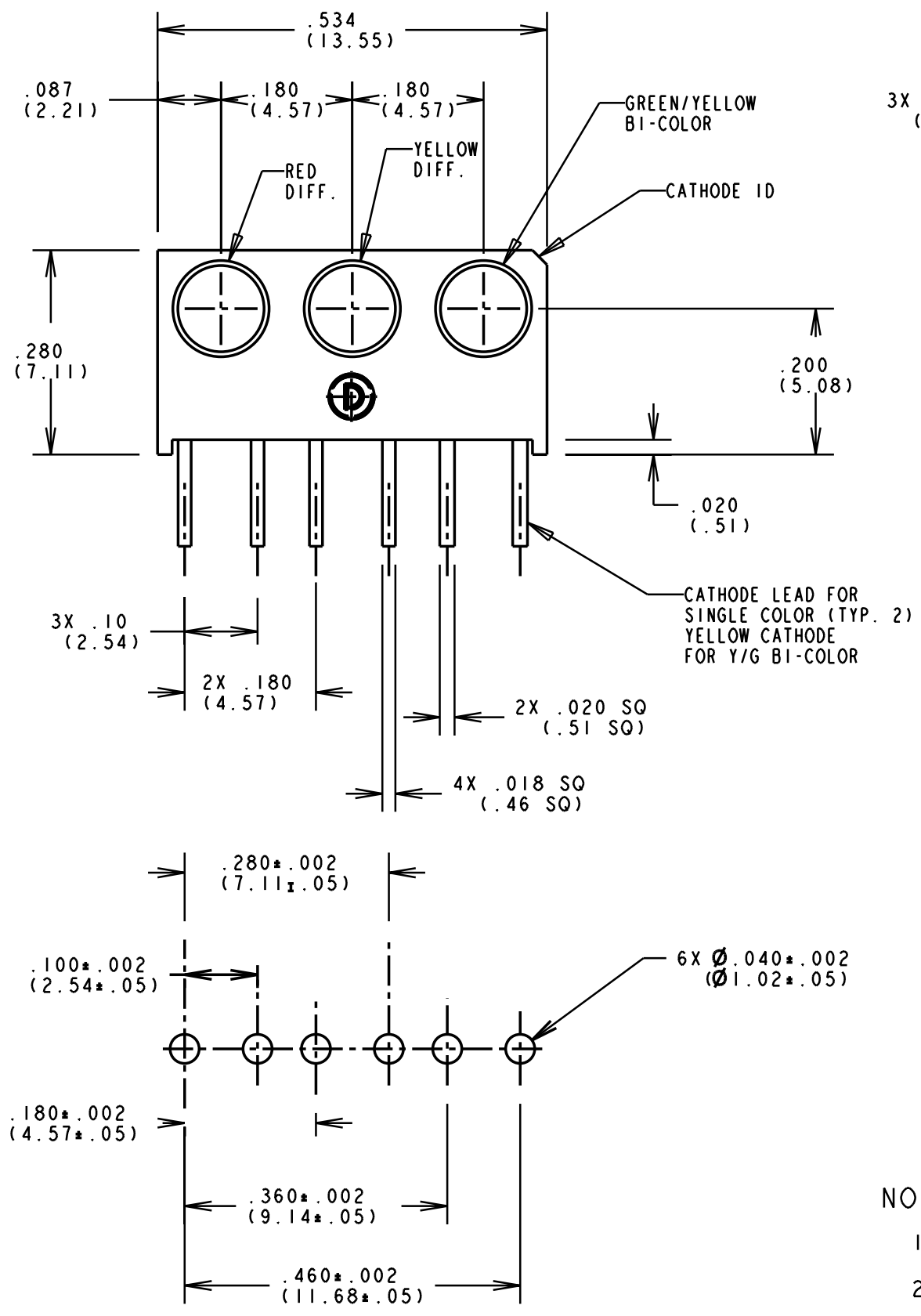


REV.	ECN NO.	REVISIONS	DRN.	CKD.	APP.	DATE
A	—	NEW RELEASE	TC		N.O.	5-6-97
B	—	FWD VOLTAGE RED 2.0, 2.8 WAS 2.2, 3.0 & ADDED TEST COND.; LUM. INTENSITY 7.4 WAS 6.0; ADDED NOTE 3.	TC	D.C.	N.O.	11-20-98
C	—	REVISED YELLOW LED SPECS.	TC			



OPERATING CHARACTERISTICS AT T_A = 25 °C
Y/G BI-COLOR LED

SYMBOL	PARAMETER	YEL/GRN BI-COLOR	MIN	TYP	MAX	UNITS	TEST COND.
V _F	FORWARD VOLTAGE	YELLOW GREEN		2.1 2.1	2.8 2.8	V	I _F = 20 mA
λ _{PK}	PEAK WAVELENGTH	YELLOW GREEN		585 565		nm	MEASURED AT PEAK
I _V	LUMINOUS INTENSITY	YELLOW GREEN	2.5 2.5	4.3 6.3		mcd	I _F = 10 mA

OPERATING CHARACTERISTICS AT T_A = 25 °C

SYMBOL	PARAMETER	COLOR	MIN	TYP	MAX	UNITS	TEST COND.
V _F	FORWARD VOLTAGE	YELLOW		2.1	2.8	V	* I _F = 20 mA
		RED		2.0 *	2.8 *		
BV _R	REVERSE BREAKDOWN VOLTAGE	YELLOW	5.0			V	I _R = 100 μA
		RED	5.0				
λ _{PK}	PEAK WAVELENGTH	YELLOW		585		nm	MEASURED AT PEAK
		RED		635			
I _V	LUMINOUS INTENSITY	YELLOW	7.4	10.0		mcd	I _F = 10 mA
		RED	7.4	10.0			

RECOMMENDED PC BOARD HOLE PATTERN

NOTES:

- LEADS TO BE FREE OF DEFORMATION AFTER BENDING AND CUTTING.
- LAMP MUST BE SEATED ALL THE WAY DOWN INTO HOUSING. BENDS MUST BE TIGHT, NO LONGITUDINAL TRAVEL ALONG AXIS ALLOWED.
- DIALIGHT PART NUMBER: 551-0003-810.

THIS DRAWING AND THE CONTENTS HEREIN ARE CONFIDENTIAL AND THE SOLE PROPERTY OF DIALIGHT. REPRODUCTION OF THIS DRAWING OR CONSTRUCTION OF ANY PARTS WITHIN THIS DRAWING ARE FORBIDDEN WITHOUT THE WRITTEN CONSENT OF DIALIGHT.

SCALE 5:1	DRAWING NUMBER	REV
ALL DIM'S IN: INCHES	C-16230	C
TOLERANCES: UNLESS OTHERWISE SPECIFIED	TITLE	
FRACTIONS: ±1/64	MATERIAL	
DECIMALS (.XX): ±.020		
DECIMALS (.XXX): ±.015		
ANGLES: ±3°	1913 ATLANTIC AVE. MANASQUAN, N.J. 08736	
FINISH:	SHEET	OF
FSCM 83330	FAMILY TABLE:	

X-ON Electronics

Largest Supplier of Electrical and Electronic Components

Click to view similar products for [LED Circuit Board Indicators](#) category:

Click to view products by [Dialight](#) manufacturer:

Other Similar products are found below :

[568-0701-841F](#) [LTL-4221NH129](#) [LTL-42DGNMHDP1](#) [HLMP1521101](#) [HLMP1523802F](#) [HLMP1700101F](#) [HLMP1700104F](#) [BHA-1564-G](#)
[SMF-HM1530YD-305](#) [SSF-LXH409SYSUGW](#) [AM2520EHSGD](#) [HLMP1301104F](#) [HLMP1385101F](#) [HLMP1421101](#) [HLMP1503103F](#)
[HLMP1503104F](#) [HLMP1700102F](#) [HLMP1700106F](#) [HLMP1700107F](#) [HLMP1790101F](#) [HLMP1790103F](#) [LTL-4211NHBP](#) [5390H3](#) [551-](#)
[2802F](#) [552-0794-810F](#) [553-0222-812F](#) [HT3-BC-T](#) [564-0700-831F](#) [WP59BLGEW](#) [103-3101-1231-403](#) [5502407811F](#) [550-3007-810F](#) [551-](#)
[3307MF](#) [552080-1](#) [573-2399-100F](#) [592-2020-302F](#) [5932-927-2701-3F](#) [SMF-HM1530SRD-509](#) [SSF-LXH100MID](#) [SSF-LXH2103SRSDRP](#)
[SSF-LXH555USBW](#) [WP937SB/4YGW](#) [WP937EB2EGW](#) [551-0312-802F](#) [553-0110-802F](#) [561-5501-050F](#) [6202T3-5VLC](#) [LTL-307G08A-D](#)
[CMD57164](#) [568-2231-313F](#)