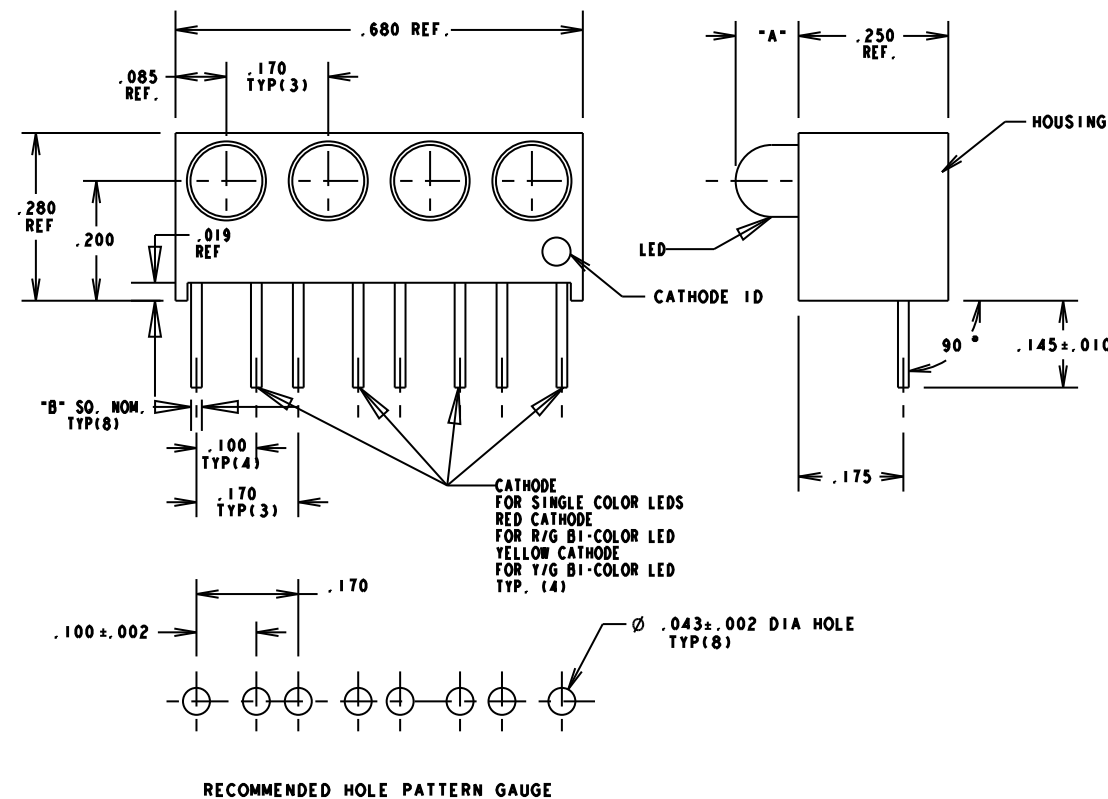


OPERATING CHARACTERISTICS AT 25°C AMBIENT FOR P/N 551-0207-004F (GREEN)					
LED CHARACTERISTICS	MIN	TYP	MAX	UNITS	TEST CONDITIONS
LUMINOUS INTENSITY	5.6	16.0		mc d	I _f =10mA
FORWARD VOLTAGE		2.1	3.0	V	I _f =10mA
REVERSE CURRENT			10	μA	V _r =3V
PEAK WAVELENGTH		563		nm	
2 = 1/2 INTENSITY ANGLE		45		°	I _f =10mA
CAPACITANCE		16		pf	V _r =0V, f=1 MHz
ABSOLUTE MAXIMUM RATINGS AT 25°C AMBIENT					
POWER DISSIPATION	75 mW				
DERATE LINEALLY FROM 50°C	.50 mA/°C				
CONTINUOUS FORWARD CURRENT	25 mA				
PEAK FORWARD CURRENT	60 mA				
PEAK REVERSE VOLTAGE	3 V				
LEAD SOLDERING TEMP. 5 SEC. 1/16" FROM BASE	260°C				
OPERATING TEMPERATURE	-25°C TO 85°C				
STORAGE TEMPERATURE	-30°C TO 100°C				

OPERATING CHARACTERISTICS AT 25°C AMBIENT FOR P/N 551-0307-004F (YELLOW)					
LED CHARACTERISTICS	MIN	TYP	MAX	UNITS	TEST CONDITIONS
LUMINOUS INTENSITY	2.2	6.3		mc d	I _f =10mA
FORWARD VOLTAGE		2.1	3.0	V	I _f =10mA
REVERSE VOLTAGE	3			V	I _r =10μA
PEAK WAVELENGTH		585		nm	
2 = 1/2 INTENSITY ANGLE		45		°	I _f =10mA
CAPACITANCE		5		pf	V _r =0V, f=1 MHz
ABSOLUTE MAXIMUM RATINGS AT 25°C AMBIENT					
POWER DISSIPATION	60 mW				
DERATE LINEALLY FROM 50°C	.50 mA/°C				
CONTINUOUS FORWARD CURRENT	20 mA				
PEAK FORWARD CURRENT	60 mA				
PEAK REVERSE VOLTAGE	3 V				
LEAD SOLDERING TEMP. 5 SEC. 1/16" FROM BASE	260°C				
OPERATING TEMPERATURE	-25°C TO 85°C				
STORAGE TEMPERATURE	-30°C TO 100°C				

OPERATING CHARACTERISTICS AT 25°C AMBIENT FOR P/N 551-0407-004F (RED)					
LED CHARACTERISTICS	MIN	TYP	MAX	UNITS	TEST CONDITIONS
LUMINOUS INTENSITY	3.6	10		mc d	I _f =10mA
FORWARD VOLTAGE		2.0	3.0	V	I _f =10mA
REVERSE VOLTAGE	3			V	I _r =10μA
PEAK WAVELENGTH		650		nm	
2 = 1/2 INTENSITY ANGLE		45		°	I _f =10mA
CAPACITANCE		9.2		pf	V _r =0V, f=1 MHz
ABSOLUTE MAXIMUM RATINGS AT 25°C AMBIENT					
POWER DISSIPATION	60 mW				
DERATE LINEALLY FROM 50°C	.50 mA/°C				
CONTINUOUS FORWARD CURRENT	20 mA				
PEAK FORWARD CURRENT	60 mA				
PEAK REVERSE VOLTAGE	3 V				
LEAD SOLDERING TEMP. 5 SEC. 1/16" FROM BASE	260°C				
OPERATING TEMPERATURE	-25°C TO 85°C				
STORAGE TEMPERATURE	-30°C TO 100°C				

PART NUMBER	LED COLOR	DIM. "A"	DIM. "B"
551-0207-004F	GREEN	.113±.012	.020
551-0307-004F	YELLOW	.113±.012	.020
551-0407-004F	RED	.113±.012	.020
551-0507-004F	RED	.103±.012	.018
551-0607-004F	GREEN	.103±.012	.018
551-0707-004F	YELLOW	.103±.012	.018
551-1107-004F	RED	.103±.012	.018
551-1207-004F	YELLOW	.103±.012	.018
551-1307-004F	GREEN	.103±.012	.018
551-1407-004F	AlGaAs RED	.103±.012	.018
551-2507-004F	ORANGE	.103±.012	.018
551-3007-004F	RED/GREEN	.103±.012	.020
551-3107-004F	YELLOW/GREEN	.103±.012	.018



OPERATING CHARACTERISTICS AT 25°C AMBIENT FOR P/N 551-0507-004F (RED)					
LED CHARACTERISTICS	MIN	TYP	MAX	UNITS	TEST CONDITIONS
LUMINOUS INTENSITY	8.7	29		mc d	V _f =5 V
FORWARD CURRENT		10	20	mA	V _f =5 V
REVERSE CURRENT			100	μA	V _r =5 V
PEAK WAVELENGTH		635		nm	
2 = 1/2 INTENSITY ANGLE		60		°	
ABSOLUTE MAXIMUM RATINGS AT 25°C AMBIENT					
FORWARD VOLTAGE	7.5 V				
DERATE LINEALLY FROM 50°C	.086 V/°C				
REVERSE VOLTAGE	5 V				
LEAD SOLDERING TEMP. 5 SEC. (.063/1.60)" FROM BODY	260°C				
OPERATING TEMPERATURE	-40°C TO 85°C				
STORAGE TEMPERATURE	-55°C TO 100°C				

REV	ECN NO	REVISIONS	DRN	CKD	APP	DATE
A		NEW RELEASE	ALV	MES	NO	8-8-07
B		ADDED P/NS 551-3007-004F & 551-3107-004F	AJF	KLJ	NO	5-8-11

RoHS COMPLIANT 551-XX07-004F

Part Numbers with the "F" suffix ending are RoHS Compliant. For example: 551-0207-004F. Packaging is marked with "RoHS Compliant" label or equivalent markings. Parts can be wave soldered, dip soldered or hand soldered using typical lead-free soldering process with max 260°C temp. for 5 sec.

NOTES:

1. LEAD LEAD DIMENSIONS SHOWN ARE MEASURED AT HOUSING EXIT.
2. LEADS TO FIT INTO HOLES SPACED AS PER PATTERN.
3. DIALIGHT PART NUMBERS: 551-XX07-004F.
4. THIS ASSEMBLY CONTAINS ELECTROSTATIC DISCHARGE SENSITIVE DEVICES (ESDS). MAINTAIN ALL PRECAUTIONARY MEASURES DURING ASSEMBLY, HANDLING, AND STORAGE IN ACCORDANCE WITH IPC-A-610.

OPERATING CHARACTERISTICS AT 25°C AMBIENT FOR P/N 551-3107-004F (Y/G)						
LED CHARACTERISTICS	COLOR	MIN	TYP	MAX	UNITS	TEST CONDITIONS
LUMINOUS INTENSITY	YELLOW	3.0		8.5	mc d	I _f =10mA
	GREEN	6.5		18.0		
FORWARD VOLTAGE	YELLOW		2.1	2.6	V	I _f =10mA
	GREEN		2.1	2.6		
REVERSE CURRENT	ALL			100	μA	V _r =3V
PEAK WAVELENGTH	YELLOW			585	nm	
	GREEN			565		
2 = 1/2 INTENSITY ANGLE	ALL			80	°	I _f =10mA

ABSOLUTE MAXIMUM RATINGS AT 25°C AMBIENT		
POWER DISSIPATION	YELLOW	60 mW
DERATE LINEALLY FROM 50°C	YELLOW	.25 mA/°C
CONTINUOUS FORWARD CURRENT	YELLOW	20 mA
PEAK FORWARD CURRENT	YELLOW	80 mA
PEAK REVERSE VOLTAGE	YELLOW	5 V
LEAD SOLDERING TEMP. 5 SEC. 1/16" FROM BASE	260°C	
OPERATING TEMPERATURE	-55°C TO +100°C	
STORAGE TEMPERATURE	-55°C TO +100°C	



ATTENTION:
OBSERVE PRECAUTIONS FOR
HANDLING ELECTROSTATIC
SENSITIVE DEVICES

THIS DRAWING AND THE CONTENTS HEREIN ARE CONFIDENTIAL AND THE SOLE PROPERTY OF DIALIGHT. REPRODUCTION OF THIS DRAWING OR CONSTRUCTION OF ANY PARTS WITHIN THIS DRAWING ARE FORBIDDEN WITHOUT THE WRITTEN CONSENT OF DIALIGHT.		
SCALE: DRAWING SCALE ALL DIM'S IN: INCHES (MM)	DRAWING NUMBER C-17509	REV B
TOLERANCES: UNLESS OTHERWISE SPECIFIED FRACTIONS: ±1/64 DECIMALS (.XX): ±.01 DECIMALS (.XXX): ±.005 DECIMALS (.XXXX): ±.0005 ANGLES: ±1°	TITLE 3mm QUAD LED CBI RoHS COMPLIANT	MATERIAL
FINISH:	Dialight 1501 ROUTE 34 SOUTH FARMINGDALE, NJ 07727	
FSCM 83330	SHEET 1 OF 2	FAMILY TABLE:

OPERATING CHARACTERISTICS AT 25°C AMBIENT FOR P/N 551-0707-004F (YELLOW)					
LED CHARACTERISTICS	MIN	TYP	MAX	UNITS	TEST CONDITIONS
LUMINOUS INTENSITY	3.7	12.6		mc d	Vr=5 V
FORWARD CURRENT		10	20	mA	Vr=5 V
REVERSE CURRENT			100	μA	Vr=5 V
PEAK WAVELENGTH		585		nm	
2 = 1/2 INTENSITY ANGLE		60		DEGREES	
ABSOLUTE MAXIMUM RATINGS AT 25°C AMBIENT					
FORWARD VOLTAGE	7.5 V				
DERATE LINEALY FROM 50°C	.086 V/°C				
REVERSE VOLTAGE	5 V				
LEAD SOLDERING TEMP. 5 SEC. (.063/1.60)" FROM BODY	260°C				
OPERATING TEMPERATURE	-40°C TO 85°C				
STORAGE TEMPERATURE	-55°C TO 100°C				

OPERATING CHARACTERISTICS AT 25°C AMBIENT FOR P/N 551-1107-004F (RED)					
LED CHARACTERISTICS	MIN	TYP	MAX	UNITS	TEST CONDITIONS
LUMINOUS INTENSITY	1.0	1.6		mc d	If=2mA
FORWARD VOLTAGE		1.7	2.2	mA	If=2mA
REVERSE CURRENT			10	μA	Vr=5 V
PEAK WAVELENGTH		635		nm	
2 = 1/2 INTENSITY ANGLE		60		DEGREES	
ABSOLUTE MAXIMUM RATINGS AT 25°C AMBIENT					
POWER DISSIPATION	20 mW				
CONTINUOUS FORWARD CURRENT	7 mA				
PEAK FORWARD CURRENT (1/10 DUTY CYCLE, 0.1 ms PULSE WIDTH)	500 mA				
REVERSE VOLTAGE	5 V				
LEAD SOLDERING TEMP. 5 SEC. (.063/1.60)" FROM BODY	260°C				
OPERATING TEMPERATURE	-55°C TO 100°C				
STORAGE TEMPERATURE	-55°C TO 100°C				

OPERATING CHARACTERISTICS AT 25°C AMBIENT FOR P/N 551-1207-004F (YELLOW)					
LED CHARACTERISTICS	MIN	TYP	MAX	UNITS	TEST CONDITIONS
LUMINOUS INTENSITY	2.3	5		mc d	If=2mA
FORWARD VOLTAGE		1.8	2.4	mA	If=2mA
REVERSE CURRENT			100	μA	Vr=5 V
PEAK WAVELENGTH		591		nm	
2 = 1/2 INTENSITY ANGLE		60		DEGREES	
ABSOLUTE MAXIMUM RATINGS AT 25°C AMBIENT					
POWER DISSIPATION	75 mW				
CONTINUOUS FORWARD CURRENT	30 mA				
PEAK FORWARD CURRENT (1/10 DUTY CYCLE, 0.1 ms PULSE WIDTH)	60 mA				
REVERSE VOLTAGE	5 V				
LEAD SOLDERING TEMP. 5 SEC. (.063/1.60)" FROM BODY	260°C				
OPERATING TEMPERATURE	-40°C TO 100°C				
STORAGE TEMPERATURE	-55°C TO 100°C				

OPERATING CHARACTERISTICS AT 25°C AMBIENT FOR P/N 551-1407-004F (RED)					
LED CHARACTERISTICS	MIN	TYP	MAX	UNITS	TEST CONDITIONS
LUMINOUS INTENSITY	2	3		mc d	If=10mA
FORWARD VOLTAGE		1.6	1.8	V	If=10mA
REVERSE VOLTAGE	5			V	Ir=100μA
PEAK WAVELENGTH		645		nm	
2 = 1/2 INTENSITY ANGLE		45		DEGREES	If=10mA
CAPACITANCE		30		pf	Vr=0V, f=1MHz
ABSOLUTE MAXIMUM RATINGS AT 25°C AMBIENT					
POWER DISSIPATION	87 mW				
DERATE LINEALY FROM 50°C	.50 mA/°C				
CONTINUOUS FORWARD CURRENT	30 mA				
PEAK PULSE CURRENT 10 μs PULSE	300 mA				
PEAK REVERSE VOLTAGE	5 V				
LEAD SOLDERING TEMP. 5 SEC. 1/16" FROM BASE	260°C				
OPERATING TEMPERATURE	-20°C TO 100°C				
STORAGE TEMPERATURE	-55°C TO 100°C				

OPERATING CHARACTERISTICS AT 25°C AMBIENT FOR P/N 551-2507-004F (ORANGE)					
LED CHARACTERISTICS	MIN	TYP	MAX	UNITS	TEST CONDITIONS
LUMINOUS INTENSITY	3.4	7.0	10.8	mc d	If=10mA
FORWARD VOLTAGE	1.5	1.9	2.4	V	If=10mA
REVERSE CURRENT			100	μA	Vr=5 V
PEAK WAVELENGTH		600		nm	
2 = 1/2 INTENSITY ANGLE		60		DEGREES	If=10mA
CAPACITANCE		4		pf	Vr=0V, f=1MHz
ABSOLUTE MAXIMUM RATINGS AT 25°C AMBIENT					
POWER DISSIPATION	135 mW				
DERATE LINEALY FROM 50°C	.50 mA/°C				
AVERAGE FORWARD CURRENT	25 mA				
PEAK FORWARD CURRENT	90 mA				
REVERSE VOLTAGE	5 V				
LEAD SOLDERING TEMP. 5 SEC. 1/16" FROM BASE	260°C				
OPERATING TEMPERATURE	-55°C TO 100°C				
STORAGE TEMPERATURE	-55°C TO 100°C				

OPERATING CHARACTERISTICS AT 25°C AMBIENT FOR P/N 551-0607-004F (GREEN)					
LED CHARACTERISTICS	MIN	TYP	MAX	UNITS	TEST CONDITIONS
LUMINOUS INTENSITY	5.6	19		mc d	Vr=5 V
FORWARD CURRENT		10	20	mA	Vr=5 V
REVERSE CURRENT			100	μA	Vr=5 V
PEAK WAVELENGTH		565		nm	
2 = 1/2 INTENSITY ANGLE		60		DEGREES	
ABSOLUTE MAXIMUM RATINGS AT 25°C AMBIENT					
FORWARD VOLTAGE	7.5 V				
DERATE LINEALY FROM 50°C	.086 V/°C				
REVERSE VOLTAGE	5 V				
LEAD SOLDERING TEMP. 5 SEC. (.063/1.60)" FROM BODY	260°C				
OPERATING TEMPERATURE	-40°C TO 85°C				
STORAGE TEMPERATURE	-55°C TO 100°C				

OPERATING CHARACTERISTICS AT 25°C AMBIENT FOR P/N 551-1307-004F (GREEN)					
LED CHARACTERISTICS	MIN	TYP	MAX	UNITS	TEST CONDITIONS
LUMINOUS INTENSITY	1.0	1.6		mc d	If=2mA
FORWARD VOLTAGE		1.9	2.2	mA	If=2mA
REVERSE CURRENT			10	μA	Vr=5 V
PEAK WAVELENGTH		565		nm	
2 = 1/2 INTENSITY ANGLE		60		DEGREES	
ABSOLUTE MAXIMUM RATINGS AT 25°C AMBIENT					
POWER DISSIPATION	20 mW				
CONTINUOUS FORWARD CURRENT	7 mA				
PEAK FORWARD CURRENT (1/10 DUTY CYCLE, 0.1 ms PULSE WIDTH)	500 mA				
REVERSE VOLTAGE	5 V				
LEAD SOLDERING TEMP. 5 SEC. (.063/1.60)" FROM BODY	260°C				
OPERATING TEMPERATURE	-55°C TO 100°C				
STORAGE TEMPERATURE	-55°C TO 100°C				

OPERATING CHARACTERISTICS AT 25°C AMBIENT FOR P/N 551-3007-004F (R/G)						
LED CHARACTERISTICS	COLOR	MIN	TYP	MAX	UNITS	TEST CONDITIONS
LUMINOUS INTENSITY	RED	3.0	5.6		mc d	If=20mA
	GREEN	3.7	8.7			
FORWARD VOLTAGE	RED		2.0	2.6	V	If=20mA
	GREEN		2.1	2.6		
REVERSE CURRENT	ALL			100	μA	Vr=5V
PEAK WAVELENGTH	RED		630		nm	
	GREEN		565			
2 = 1/2 INTENSITY ANGLE	ALL		200		°	If=20mA
ABSOLUTE MAXIMUM RATINGS AT 25°C AMBIENT					RED/GREEN	
POWER DISSIPATION					100 mW	
DERATE LINEALY FROM 50°C					.40 mA/°C	
CONTINUOUS FORWARD CURRENT					30 mA	
PEAK FORWARD CURRENT					120 mA	
PEAK REVERSE VOLTAGE					5 V	
LEAD SOLDERING TEMP. 5 SEC. 1/16" FROM BASE					260°C	
OPERATING TEMPERATURE					-55°C TO +100°C	
STORAGE TEMPERATURE					-55°C TO +100°C	

THIS DRAWING AND THE CONTENTS HEREIN ARE CONFIDENTIAL AND THE SOLE PROPERTY OF DIALIGHT. REPRODUCTION OF THIS DRAWING OR CONSTRUCTION OF ANY PARTS WITHIN THIS DRAWING ARE FORBIDDEN WITHOUT THE WRITTEN CONSENT OF DIALIGHT.		
SCALE: DRAWING SCALE ALL DIM'S IN: INCHES (MM)	DRAWING NUMBER C-17509	REV B
TOLERANCES: UNLESS OTHERWISE SPECIFIED FRACTIONS: ±1/64 DECIMALS (.XX): ±.01 DECIMALS (.XXX): ±.005 DECIMALS (.XXXX): ±.0005 ANGLES: ±1°	TITLE 3 mm QUAD LED CBI RoHS COMPLIANT	
FINISH:	MATERIAL	
FSCM 83330	Dialight 1501 ROUTE 34 SOUTH FARMINGDALE, NJ 07729	
	SHEET 2 OF 2	FAMILY TABLE:

X-ON Electronics

Largest Supplier of Electrical and Electronic Components

Click to view similar products for [LED Circuit Board Indicators](#) category:

Click to view products by [Dialight](#) manufacturer:

Other Similar products are found below :

[568-0701-841F](#) [LTL-4221NH129](#) [LTL-42DGNMHDP1](#) [HLMP1521101](#) [HLMP1523802F](#) [HLMP1700101F](#) [HLMP1700104F](#) [BHA-1564-G](#)
[SMF-HM1530YD-305](#) [SSF-LXH409SYSUGW](#) [AM2520EHSGD](#) [HLMP1301104F](#) [HLMP1385101F](#) [HLMP1421101](#) [HLMP1503103F](#)
[HLMP1503104F](#) [HLMP1700102F](#) [HLMP1700106F](#) [HLMP1700107F](#) [HLMP1790101F](#) [HLMP1790103F](#) [LTL-4211NHBP](#) [5390H3](#) [551-](#)
[2802F](#) [552-0794-810F](#) [553-0222-812F](#) [HT3-BC-T](#) [564-0700-831F](#) [WP59BLGEW](#) [103-3101-1231-403](#) [5502407811F](#) [550-3007-810F](#) [551-](#)
[3307MF](#) [552080-1](#) [573-2399-100F](#) [592-2020-302F](#) [5932-927-2701-3F](#) [SMF-HM1530SRD-509](#) [SSF-LXH100MID](#) [SSF-LXH2103SRSDRP](#)
[SSF-LXH555USBW](#) [WP937SB/4YGW](#) [WP937EB2EGW](#) [551-0312-802F](#) [553-0110-802F](#) [561-5501-050F](#) [6202T3-5VLC](#) [LTL-307G08A-D](#)
[CMD57164](#) [568-2231-313F](#)