

| DIALIGHT PART NUMBER | LED COLOR | DIM "A" | DIM "B" | DIM "C" | DIM "D" | DIM "E" | OPERATING CHARACTERISTICS AT 25°C AMBIENT | | | | | | | | | | | |
|----------------------|-----------------------------------|---------|-----------|-----------|-------------|---------|---|-----|------|-------------------------------------|-----------|---------------------|-----|----------------------|-----|----------------------|----------------------|---------------------|
| | | | | | | | LUMINOUS INTENSITY TEST CONDITION | | | FORWARD VOLTAGE / CURRENT TEST COND | | FORWARD VOLTAGE (V) | | FORWARD CURRENT (mA) | | REVERSE CURRENT (mA) | PEAK WAVELENGTH (nm) | VIEWING ANGLE (DEG) |
| | | | | | | | MIN | TYP | MAX | TYP | MAX | TYP | MAX | TYP | MAX | MAX | TYP | TYP |
| 551-0207-804F | GREEN TINTED DIFFUSED | .095 | .118±.010 | .115 | .016 x .018 | .040 | If = 10mA | 5.6 | 12.6 | 29 | If = 10mA | 2.1 | 2.6 | — | — | 100 | 565 | 60 |
| 551-0207-815F | GREEN TINTED DIFFUSED | .095 | .118±.010 | .110 | .016 x .018 | .040 | If = 10mA | 5.6 | 12.6 | 29 | If = 10mA | 2.1 | 2.6 | — | — | 100 | 565 | 60 |
| 551-0207-818F | GREEN TINTED DIFFUSED | .095 | .118±.010 | .177 | .016 x .018 | .040 | If = 10mA | 5.6 | 12.6 | 29 | If = 10mA | 2.1 | 2.6 | — | — | 100 | 565 | 60 |
| 551-0307-803F | YELLOW TINTED DIFFUSED | .095 | .118±.010 | .115 | .016 x .018 | .040 | If = 10mA | 3.7 | 8.7 | 30 | If = 10mA | 2.1 | 2.6 | — | — | 100 | 585 | 60 |
| 551-0307-807F | AlInGaP YELLOW WATER CLEAR | .095 | .115±.010 | UNTRIMMED | .018 SQ. | .040 | If = 20mA | 3.5 | 200 | — | If = 20mA | 1.9 | 2.4 | — | — | 100 | 592 | 45 |
| 551-0307-809F | YELLOW TINTED DIFFUSED | .095 | .118±.010 | .110 | .016 x .018 | .040 | If = 10mA | 3.7 | 8.7 | 30 | If = 10mA | 2.1 | 2.6 | — | — | 100 | 585 | 60 |
| 551-0307-812F | YELLOW TINTED DIFFUSED | .095 | .118±.010 | .210 | .016 x .018 | .040 | If = 10mA | 3.7 | 8.7 | 30 | If = 10mA | 2.1 | 2.6 | — | — | 100 | 585 | 60 |
| 551-0407-803F | RED TINTED DIFFUSED | .095 | .118±.010 | .115 | .016 x .018 | .040 | If = 10mA | 2.5 | 8.7 | 18 | If = 10mA | 2.0 | 2.6 | — | — | 100 | 635 | 60 |
| 551-0407-818F | RED TINTED DIFFUSED | .095 | .118±.010 | .110 | .016 x .018 | .040 | If = 10mA | 2.5 | 8.7 | 18 | If = 10mA | 2.0 | 2.6 | — | — | 100 | 635 | 60 |
| 551-0507-801F | RED TINTED DIFFUSED; 5V INT RES | .095 | .118±.010 | .115 | .018 x .016 | .040 | Vf = 5V | 8.7 | 29 | — | Vf = 5V | — | — | 10 | 20 | 100 | 635 | 60 |
| 551-0507-806F | RED TINTED DIFFUSED; 5V INT RES | .095 | .118±.010 | .110 | .018 x .016 | .040 | Vf = 5V | 8.7 | 29 | — | Vf = 5V | — | — | 10 | 20 | 100 | 635 | 60 |
| 551-0607-801F | GREEN TINTED DIFFUSED; 5V INT RES | .095 | .118±.010 | .110 | .018 x .016 | .040 | Vf = 5V | 5.6 | 19 | — | Vf = 5V | — | — | 10 | 20 | 100 | 565 | 60 |
| * 551-1107-801F | RED TINTED DIFFUSED; 2mA LC | .095 | .118±.010 | .145 | .018 x .016 | .040 | If = 2mA | 1.0 | 1.6 | — | If = 2mA | 1.7 | 2.2 | — | — | 10 | 635 | 60 |
| 551-1107-811F | RED TINTED DIFFUSED; 2mA LC | .095 | .118±.010 | .110 | .018 x .016 | .040 | If = 2mA | 1.0 | 1.6 | — | If = 2mA | 1.7 | 2.2 | — | — | 10 | 635 | 60 |
| * 551-1207-801F | YELLOW TINTED DIFFUSED; 2mA LC | .095 | .118±.010 | .145 | .018 x .016 | .040 | If = 2mA | 1.0 | 1.6 | — | If = 2mA | 1.8 | 2.7 | — | — | 10 | 585 | 60 |
| 551-1207-809F | YELLOW TINTED DIFFUSED; 2mA LC | .095 | .118±.010 | .110 | .018 x .016 | .040 | If = 2mA | 1.0 | 1.6 | — | If = 2mA | 1.8 | 2.7 | — | — | 10 | 585 | 60 |
| * 551-1307-801F | GREEN TINTED DIFFUSED; 2mA LC | .095 | .118±.010 | .145 | .018 x .016 | .040 | If = 2mA | 1.0 | 1.6 | — | If = 2mA | 1.9 | 2.2 | — | — | 10 | 565 | 60 |
| 551-1307-811F | GREEN TINTED DIFFUSED; 2mA LC | .095 | .118±.010 | .110 | .018 x .016 | .040 | If = 2mA | 1.0 | 1.6 | — | If = 2mA | 1.9 | 2.2 | — | — | 10 | 565 | 60 |
| 551-1307-812F | GREEN TINTED DIFFUSED; 2mA LC | .095 | .115±.010 | .145 | .018 SQ. | .040 | If = 2mA | 1.0 | 2.1 | — | If = 2mA | 1.8 | 2.2 | — | — | 50 | 565 | 50 |
| 551-3007-803F | R/G BI-COLOR, WHITE DIFFUSED | .095 | .118±.010 | .110 | .020 SQ. | .043 | If = 10mA | 2.5 | 4.7 | — | If = 20mA | 2.0 | 2.8 | — | — | 100 | 635 | 60 |
| | | | | | | | | 3.7 | 10 | — | | 2.1 | 2.8 | — | — | 100 | 565 | 60 |
| 551-4207-803F | InGaN GREEN WATER CLEAR | .101 | .110±.005 | .145 | .020 SQ. | .043 | If = 10mA | 280 | 480 | 710 | If = 10mA | 3.0 | 3.7 | — | — | 10 | 523 | 30 |

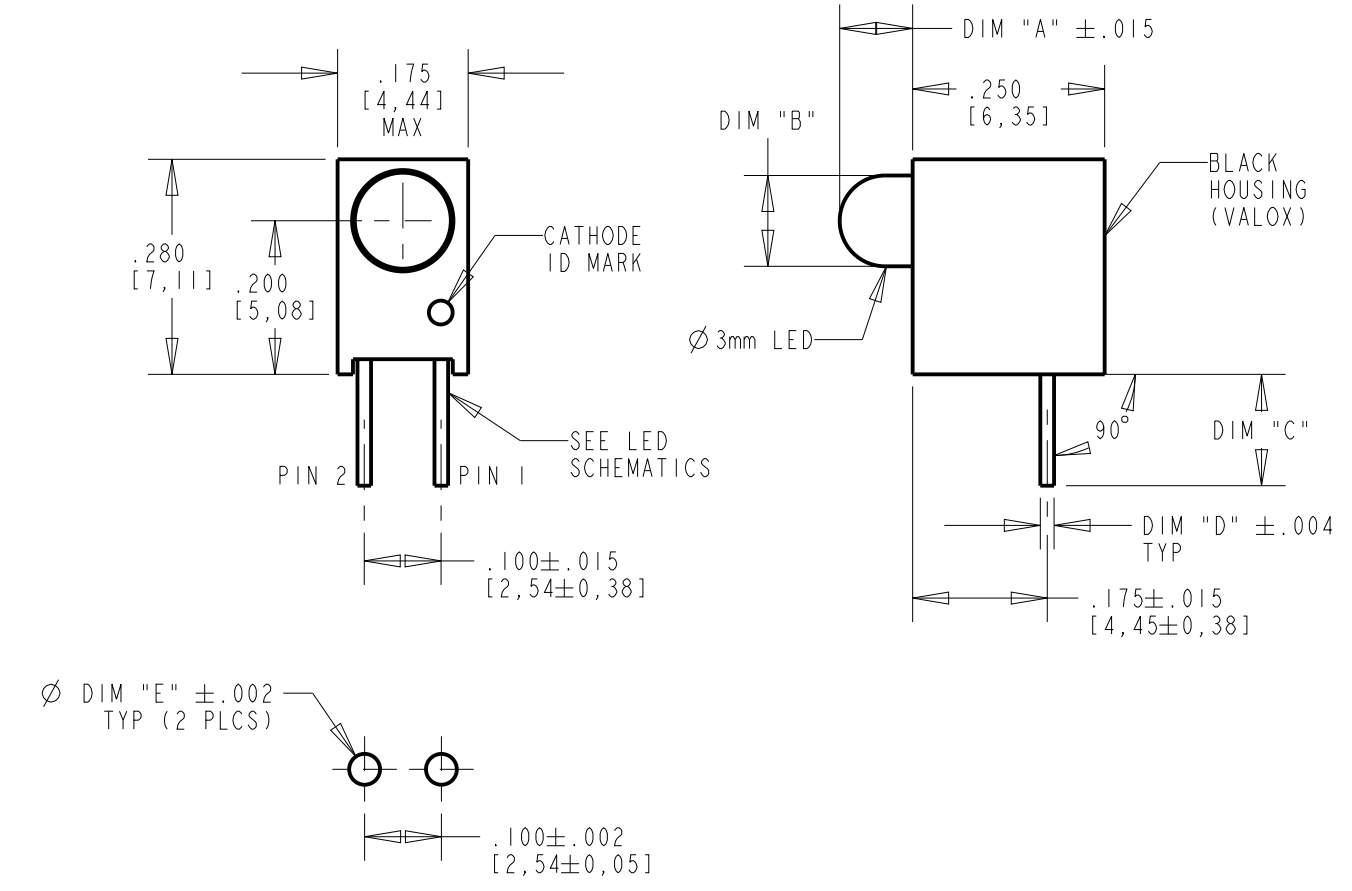
| REV | ECN NO | REVISIONS | DRN | CKD | APP | DATE |
|-----|--------|--|-----|-----|-----|---------|
| A | — | NEW RELEASE | KLJ | — | — | — |
| B | — | UPDATED DIM A,B, D & E FOR P/N'S 551-0207/0307/0407-8XXF. ALSO UPDATED LED SPECS | BP | — | NO | 8-22-16 |

RoHS COMPLIANT 551-XX07-8XXF

Part Numbers with the "F" suffix ending are RoHS Compliant. For example: 551-0207-818F. Packaging is marked with "RoHS Compliant" label or equivalent markings. Parts can be wave soldered, dip soldered or hand soldered using typical lead-free soldering process with max 260°C temp. for 5 sec.

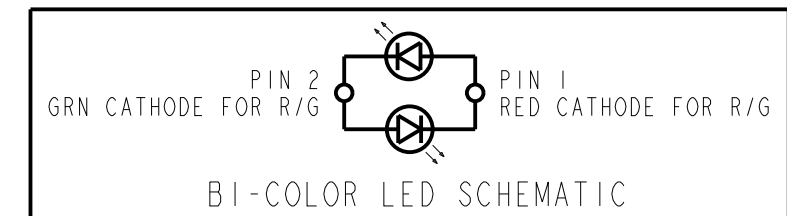
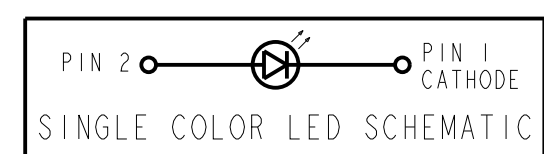
| DIALIGHT PART NUMBER | ABSOLUTE MAXIMUM RATINGS AT 25°C AMBIENT | | | | | | | | |
|----------------------|--|------------------------|------------------------|-----------------------|----------------------|---------------------|----------------------------------|-----------------------|---------------------|
| | POWER DISSIPATION (mW) | CONT. FWD CURRENT (mA) | DC FORWARD VOLTAGE (V) | PEAK FWD CURRENT (mA) | LINEAR DERATION | REVERSE VOLTAGE (V) | SOLDERING TEMPERATURE FOR 5 SEC. | OPERATING TEMPERATURE | STORAGE TEMPERATURE |
| 551-0207-804F | 120 | 30 | — | 90 | 0.4 mA/°C FROM 50°C | 5 | 260 °C | -55°C /+100°C | -55°C /+100°C |
| 551-0207-815F | 120 | 30 | — | 90 | 0.4 mA/°C FROM 50°C | 5 | 260 °C | -55°C /+100°C | -55°C /+100°C |
| 551-0207-818F | 120 | 30 | — | 90 | 0.4 mA/°C FROM 50°C | 5 | 260 °C | -55°C /+100°C | -55°C /+100°C |
| 551-0307-803F | 60 | 20 | — | 60 | 0.25 mA/°C FROM 50°C | 5 | 260 °C | -55°C /+100°C | -55°C /+100°C |
| 551-0307-807F | 103 | 50 | — | 500 | 0.84 mA/°C FROM 50°C | 5 | 260 °C | -40°C /+100°C | -40°C /+100°C |
| 551-0307-809F | 60 | 20 | — | 60 | 0.25 mA/°C FROM 50°C | 5 | 260 °C | -55°C /+100°C | -55°C /+100°C |
| 551-0307-812F | 60 | 20 | — | 60 | 0.25 mA/°C FROM 50°C | 5 | 260 °C | -55°C /+100°C | -55°C /+100°C |
| 551-0407-803F | 100 | 30 | — | 90 | 0.4 mA/°C FROM 50°C | 5 | 260 °C | -55°C /+100°C | -55°C /+100°C |
| 551-0407-818F | 100 | 30 | — | 90 | 0.4 mA/°C FROM 50°C | 5 | 260 °C | -55°C /+100°C | -55°C /+100°C |
| 551-0507-801F | — | — | 7.5 | — | 0.086 V/°C FROM 50°C | 5 | 260 °C | -40°C /+85°C | -55°C /+100°C |
| 551-0507-806F | — | — | 7.5 | — | 0.086 V/°C FROM 50°C | 5 | 260 °C | -40°C /+85°C | -55°C /+100°C |
| 551-0607-801F | — | — | 7.5 | — | 0.086 V/°C FROM 50°C | 5 | 260 °C | -40°C /+85°C | -55°C /+100°C |
| * 551-1107-801F | 20 | 7 | — | 500 | 0.7 mA/°C FROM 90°C | 5 | 260 °C | -55°C /+100°C | -55°C /+100°C |
| 551-1107-811F | 20 | 7 | — | 500 | 0.7 mA/°C FROM 90°C | 5 | 260 °C | -55°C /+100°C | -55°C /+100°C |
| * 551-1207-801F | 20 | 7 | — | 500 | 0.7 mA/°C FROM 90°C | 5 | 260 °C | -55°C /+100°C | -55°C /+100°C |
| 551-1207-809F | 20 | 7 | — | 500 | 0.7 mA/°C FROM 90°C | 5 | 260 °C | -55°C /+100°C | -55°C /+100°C |
| * 551-1307-801F | 20 | 7 | — | 500 | 0.7 mA/°C FROM 90°C | 5 | 260 °C | -55°C /+100°C | -55°C /+100°C |
| 551-1307-811F | 20 | 7 | — | 500 | 0.7 mA/°C FROM 90°C | 5 | 260 °C | -55°C /+100°C | -55°C /+100°C |
| 551-1307-812F | 24 | 7 | — | 500 | 1.0 mA/°C FROM 92°C | 5 | 260 °C | -20°C /+100°C | -40°C /+100°C |
| 551-3007-803F | 100 | 30 | — | 120 | 0.4 mA/°C FROM 50°C | 5 | 260 °C | -55°C /+100°C | -55°C /+100°C |
| 551-4207-803F | 80 | 20 | — | 250 | 0.57 mA/°C FROM 65°C | 5 | 260 °C | -55°C /+100°C | -55°C /+100°C |

* PACKAGE 100 PCS/TUBE WITH TWO [2] END PLUGS FOR THESE P/N'S ONLY



NOTES:

- LED LEAD DIMENSIONS SHOWN ARE MEASURED AT HOUSING EXIT.
- LEADS TO FIT INTO HOLES SPACED AS PER PATTERN.
- PIN NUMBERS FOR REFERENCE ONLY, DESIGNATION NON-EXISTENT ON PART.
- DIALIGHT PART NUMBERS: 551-XX07-8XXF.
- THIS ASSEMBLY CONTAINS ELECTROSTATIC DISCHARGE SENSITIVE DEVICES (ESDS). MAINTAIN ALL PRECAUTIONARY MEASURES DURING ASSEMBLY, HANDLING, AND STORAGE IN ACCORDANCE WITH IPC-A-610.



ATTENTION:
OBSERVE PRECAUTIONS FOR HANDLING ELECTROSTATIC SENSITIVE DEVICES

| | | |
|---|--|-----|
| THIS DRAWING AND THE CONTENTS HEREIN ARE CONFIDENTIAL AND THE SOLE PROPERTY OF DIALIGHT. REPRODUCTION OF THIS DRAWING OR CONSTRUCTION OF ANY PARTS WITHIN THIS DRAWING ARE FORBIDDEN WITHOUT THE WRITTEN CONSENT OF DIALIGHT. | | |
| SCALE: DRAWING SCALE | DRAWING NUMBER | REV |
| ALL DIM'S IN: INCHES (MM) | C-17721 | B |
| TOLERANCES: UNLESS OTHERWISE SPECIFIED | TITLE 3mm LED CBI .200" HIGH ϕ RoHS COMPLIANT | |
| FRACTIONS: $\pm 1/64$ | MATERIAL | |
| DECIMALS (.XX): $\pm .02$ | Dialight | |
| DECIMALS (.XXX): $\pm .010$ | 1501 ROUTE 34 SOUTH FARMINGDALE, NJ 07727 | |
| ANGLES: $\pm 3^\circ$ | FSCM 83330 | |
| FINISH: | SHEET 1 OF 1 FAMILY TABLE: | |

X-ON Electronics

Largest Supplier of Electrical and Electronic Components

Click to view similar products for [LED Circuit Board Indicators](#) category:

Click to view products by [Dialight](#) manufacturer:

Other Similar products are found below :

[568-0200-132F](#) [568-0701-841F](#) [568-0734-832F](#) [569-0312-300F](#) [591-2001-107F](#) [592-2222-302F](#) [592-2424-302F](#) [LTL-4221NH129](#) [LTL-42DGNMHDP1](#) [LTM-260-5HT](#) [H131CSRT-120](#) [HLMP1503108F](#) [HLMP1521101](#) [HLMP1523802F](#) [HLMP1700101F](#) [HLMP1700104F](#) [HLMP1790105F](#) [BHA-1564-G](#) [SMF-HM1530YD-305](#) [SSF-LXH103SUGD-04](#) [AM2520EHSGD](#) [HLMP1301104F](#) [HLMP1385101F](#) [HLMP1421101](#) [HLMP1503103F](#) [HLMP1503104F](#) [HLMP1700102F](#) [HLMP1700106F](#) [HLMP1700107F](#) [HLMP1790101F](#) [HLMP1790103F](#) [LTL-4211NHBP](#) [5320F7](#) [5330H7](#) [5350T7](#) [5352T1-5VLC](#) [5352T5-5VLC](#) [5370T7LC](#) [550-1112F](#) [550-3107-010F](#) [551-0206-003F](#) [551-0207-815F](#) [551-0212-801F](#) [551-2802F](#) [552-0794-810F](#) [552-0821F](#) [552-6033-200F](#) [553-0001-808F](#) [553-0122-818F](#) [553-0171F](#)