

DIALIGHT PART NUMBER	LED COLOR	
	POS 1	POS 2
552-0910F	RED TINTED DIFFUSED	**BLANK**
552-0911F	RED TINTED DIFFUSED	RED TINTED DIFFUSED
552-0912F	RED TINTED DIFFUSED	GREEN TINTED DIFFUSED
552-0913F	RED TINTED DIFFUSED	YELLOW TINTED DIFFUSED
552-0920F	GREEN TINTED DIFFUSED	**BLANK**
552-0921F	GREEN TINTED DIFFUSED	RED TINTED DIFFUSED
552-0922F	GREEN TINTED DIFFUSED	GREEN TINTED DIFFUSED
552-0923F	GREEN TINTED DIFFUSED	YELLOW TINTED DIFFUSED
552-0931F	YELLOW TINTED DIFFUSED	RED TINTED DIFFUSED
552-0932F	YELLOW TINTED DIFFUSED	GREEN TINTED DIFFUSED
552-0933F	YELLOW TINTED DIFFUSED	YELLOW TINTED DIFFUSED

### RoHS COMPLIANT 552-09XXF

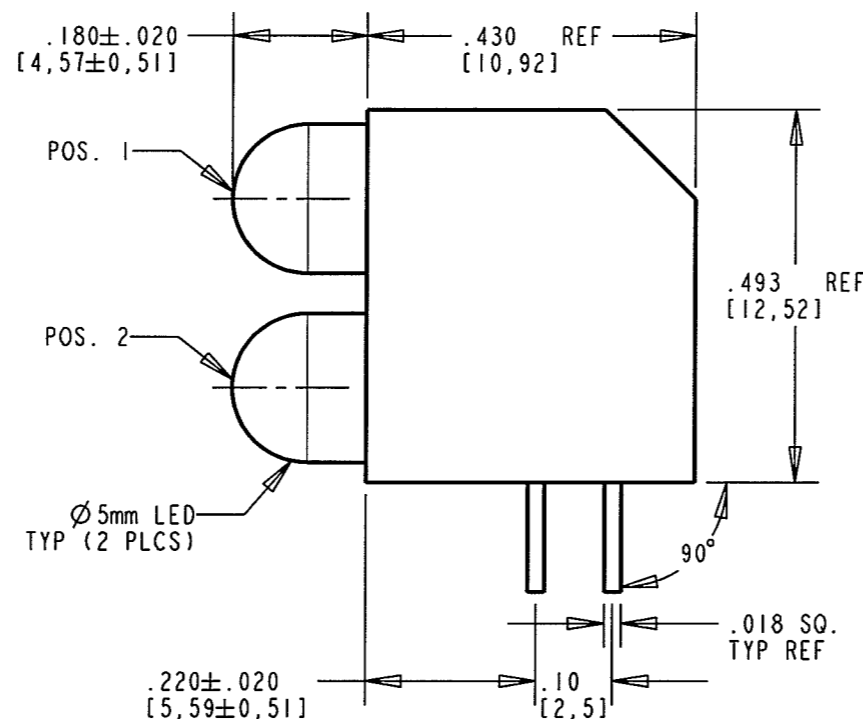
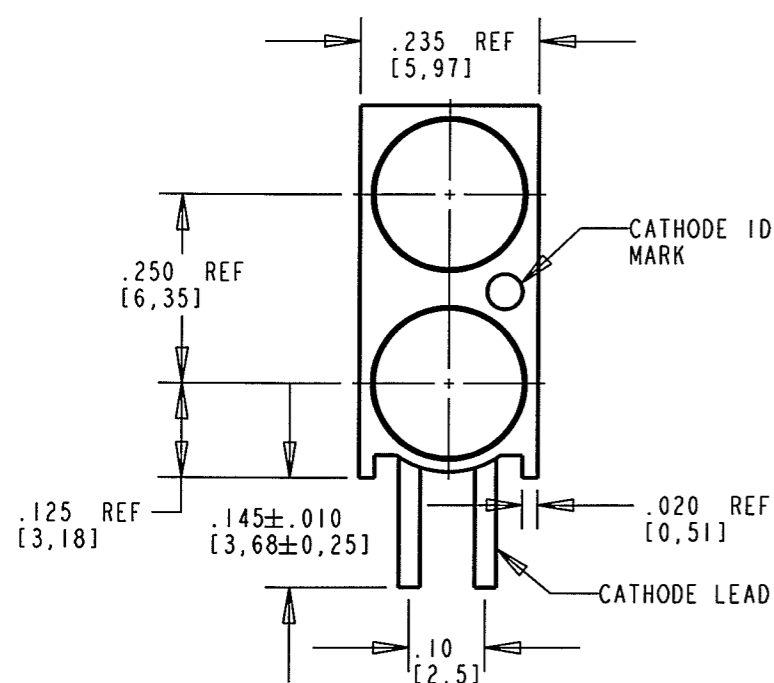
Part Numbers with the "F" suffix ending are RoHS Compliant.  
 For example: 552-0923F  
 Packaging is marked with "RoHS Compliant" label or equivalent markings. Parts can be wave soldered, dip soldered or hand soldered using typical lead-free soldering process with max 260°C temp. for 5 sec.

REV	ECN NO	REVISIONS	DRN	CKD	APP	DATE
A	—	NEW RELEASE	KLJ	J.D.	J.S.	9-16-08



**ATTENTION:**  
**OBSERVE PRECAUTIONS FOR HANDLING ELECTROSTATIC SENSITIVE DEVICES**

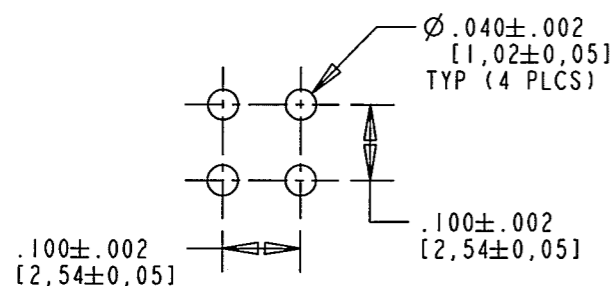
OPERATING CHARACTERISTICS AT 25°C AMBIENT											
COLOR	LUMINOUS INTENSITY @ I <sub>F</sub> = 2 mA (mcd)			FORWARD VOLTAGE @ I <sub>F</sub> = 2 mA (V)		REVERSE CURRENT (μA)	DOMINANT WAVELENGTH (nm)			PEAK WAVELENGTH (nm)	VIEWING ANGLE (DEG)
	MIN	TYP	MAX	TYP	MAX	MAX	MIN	TYP	MAX	TYP	TYP
RED	1.5	2.3	4.2	1.7	2.0	50	620	626	633	635	50
GREEN	1.2	1.8	—	1.8	2.2	50	—	—	—	565	50
YELLOW	1.2	1.8	—	1.9	2.7	50	—	—	—	583	50



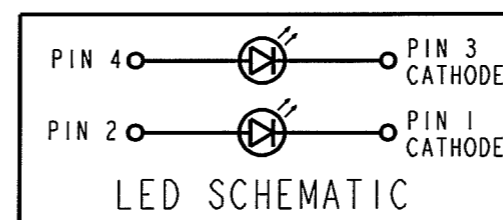
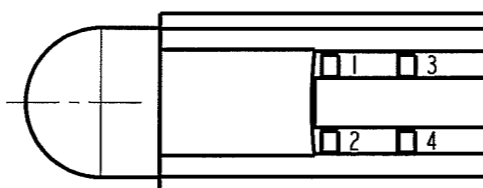
ABSOLUTE MAXIMUM RATINGS AT 25°C AMBIENT	COLOR			UNITS
	RED	GREEN	YELLOW	
POWER DISSIPATION	24	24	36	mW
DC FORWARD CURRENT	7	7	7	mA
PEAK TRANSIENT FORWARD CURRENT (10 μs PULSE WIDTH)	500	500	500	mA
DERATE LINEARLY FROM 92°C	1.0	1.0	1.0	mA/°C
REVERSE VOLTAGE	5	5	5	V
STORAGE TEMPERATURE	260			°C
OPERATING TEMPERATURE	-55 TO +100			°C
SOLDERING TEMPERATURE, 1/16" FROM BODY FOR 5 SEC	-55 TO +100			°C

**NOTES:**

- LED LEAD DIMENSIONS SHOWN ARE MEASURED AT HOUSING EXIT.
- LEADS TO FIT INTO HOLES SPACED AS PER PATTERN.
- PIN NUMBERS FOR REFERENCE ONLY, DESIGNATION NON-EXISTENT ON PART.
- DIALIGHT PART NUMBERS: 552-09XXF
- THIS ASSEMBLY CONTAINS ELECTROSTATIC DISCHARGE SENSITIVE DEVICES (ESDS). MAINTAIN ALL PRECAUTIONARY MEASURES DURING ASSEMBLY, HANDLING, AND STORAGE IN ACCORDANCE WITH IPC-A-610.



**P.C. BOARD HOLE PATTERN**



THIS DRAWING AND THE CONTENTS HEREIN ARE CONFIDENTIAL AND THE SOLE PROPERTY OF DIALIGHT. REPRODUCTION OF THIS DRAWING OR CONSTRUCTION OF ANY PARTS WITHIN THIS DRAWING ARE FORBIDDEN WITHOUT THE WRITTEN CONSENT OF DIALIGHT.		
SCALE: 4.000	DRAWING NUMBER	REV
ALL DIM'S IN: INCHES (MM)	C-17662	A
TOLERANCES: UNLESS OTHERWISE SPECIFIED	TITLE	
FRACTIONS: ±1/64	5mm BI-LEVEL CBI	
DECIMALS (.XX): ±.01	RoHS COMPLIANT	
DECIMALS (.XXX): ±.005	MATERIAL	
DECIMALS (.XXXX): ±.0005		
ANGLES: ±3°		
FINISH:		
FSCM 83330	<b>Dialight</b>	1501 ROUTE 34 SOUTH FARMINGDALE, NJ 07727
	SHEET 1 OF 1	FAMILY TABLE:

## X-ON Electronics

Largest Supplier of Electrical and Electronic Components

*Click to view similar products for [LED Circuit Board Indicators](#) category:*

*Click to view products by [Dialight](#) manufacturer:*

Other Similar products are found below :

[568-0701-841F](#) [LTL-4221NH129](#) [LTL-42DGNMHDP1](#) [HLMP1521101](#) [HLMP1523802F](#) [HLMP1700101F](#) [HLMP1700104F](#) [BHA-1564-G](#)  
[SMF-HM1530YD-305](#) [SSF-LXH409SYSUGW](#) [AM2520EHSGD](#) [HLMP1301104F](#) [HLMP1385101F](#) [HLMP1421101](#) [HLMP1503103F](#)  
[HLMP1503104F](#) [HLMP1700102F](#) [HLMP1700106F](#) [HLMP1700107F](#) [HLMP1790101F](#) [HLMP1790103F](#) [LTL-4211NHBP](#) [5390H3](#) [551-](#)  
[2802F](#) [552-0794-810F](#) [553-0222-812F](#) [HT3-BC-T](#) [564-0700-831F](#) [WP59BLGEW](#) [103-3101-1231-403](#) [5502407811F](#) [550-3007-810F](#) [551-](#)  
[3307MF](#) [552080-1](#) [573-2399-100F](#) [592-2020-302F](#) [5932-927-2701-3F](#) [SMF-HM1530SRD-509](#) [SSF-LXH100MID](#) [SSF-LXH2103SRSDRP](#)  
[SSF-LXH555USBW](#) [WP937SB/4YGW](#) [WP937EB2EGW](#) [551-0312-802F](#) [553-0110-802F](#) [561-5501-050F](#) [6202T3-5VLC](#) [LTL-307G08A-D](#)  
[CMD57164](#) [568-2231-313F](#)