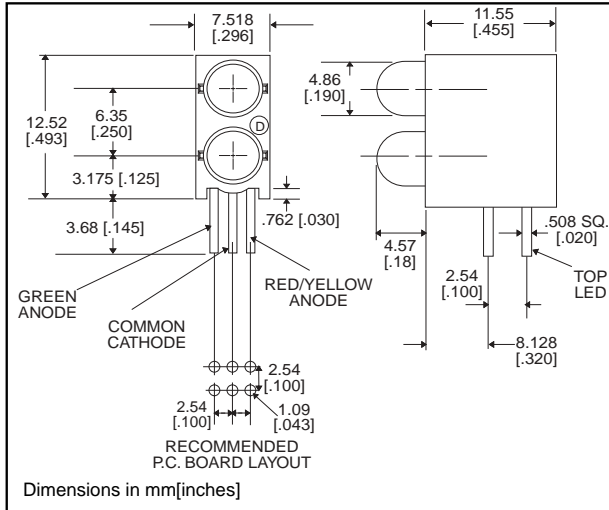


5mm

LED CBI® Circuit Board Indicator
3 Leaded, Bi-Color, Bi-Level



552-35xx



PART NO.
 552-3511
 552-3544

COLOR*
 Red/Green
 Yellow/Green

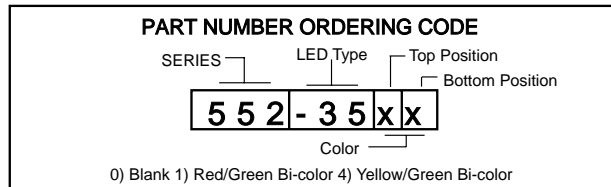
* Top-Bottom LED

Features

- Common Cathode simplifies design, and the red/green LED provides yellow-orange as a third color
- Multiple CBIs form horizontal LED arrays on 7.62mm (0.300") center-lines.
- High Contrast, UL 94 V-0 rated, black housing
- Oxygen index: 32%
- Polymer content: PBT, 1.055 g
- Housing stand-offs facilitate PCB cleaning
- Solderability per MIL-STD-202F, method 208F
- LEDs are safe for direct viewing per IEC 825-1, EN-60825-1

Tolerance note: As noted, otherwise:

- LED Protrusion: ± 0.04 mm [± 0.016]
- CBI Housing: ± 0.02 mm [± 0.008]



Typical Operating Characteristics ($T_A=25^\circ\text{C}$)

See LED data sheet for additional information
See page 6-55 and 6-56 for Reference Only LED Drive Circuit Examples. See page 6-57 for Pin Out

Part Number	Color	Peak Wavelength nm	I_V mcd	V_F Volts	Test Current (mA)	Viewing Angle $2\theta_{1/2}$	LED Data sheet	Page #
552-3511	Red/Green	635/565	5/8	2.1/2.3	10	65°	521-9450	6-45
552-3544	Yellow/Green	583/565	5/8	2.1/2.1	10	65°	521-9460	6-45

**5mm Discrete LED
Bi-Color
3 Ledged, Non-Tinted, Diffused**



521-9450, -9460



PART NO.	LED COLOR
521-9450	Red/Green
521-9460	Yellow/Green NEW

MOUNTING CLIP: 515-0004
located on page 6-48

ABSOLUTE MAXIMUM RATINGS ($T_A=25^\circ\text{C}$)

	Red/Green -9450	Yellow/Green -9460
Power Dissipation (mW)	135/135	135/135
Forward Current (mA)	25/25	25/25
Derating (mA/°C) From 50°C 1. From 40°C	.5/.5	.5/.5
Peak Current (mA)	90/90	90/90
Pulse width = 10 μs		
Operating Temperature (°C)	-20/+85	-20/+85
Storage Temperature (°C)	-55/+100	-55/+100
Soldering Temperature	260°C, 5 seconds, 1.6 mm from case	

Solder Adherence per MIL-STD-202E, Method 208C

OPERATING CHARACTERISTICS ($T_A=25^\circ\text{C}$)

		Red/Green -9450	Yellow/Green -9460
Luminous Intensity (mcd)	Min.	2.1/4.2	2.1/4.2
$I_F=10\text{mA}$	Typical	5/8	5/8
Peak Wavelength (nm)	Typical	635/565	583/565
λ_{Peak}			
Viewing Angle ($2\theta^{1/2}$)	Typical	65°	65°
Forward Voltage (V)	Typical	2.1/2.3	2.1/2.1
$I_F=10\text{mA}$	Max.	2.5/2.7	2.5/2.5

$\theta^{1/2}$ is the off axis angle at which the luminous intensity is half the axial luminous intensity

6

X-ON Electronics

Largest Supplier of Electrical and Electronic Components

Click to view similar products for [LED Circuit Board Indicators](#) category:

Click to view products by [Dialight](#) manufacturer:

Other Similar products are found below :

[568-0701-841F](#) [LTL-4221NH129](#) [LTL-42DGNMHDP1](#) [HLMP1521101](#) [HLMP1523802F](#) [HLMP1700101F](#) [HLMP1700104F](#) [BHA-1564-G](#)
[SMF-HM1530YD-305](#) [SSF-LXH409SYSUGW](#) [AM2520EHSGD](#) [HLMP1301104F](#) [HLMP1385101F](#) [HLMP1421101](#) [HLMP1503103F](#)
[HLMP1503104F](#) [HLMP1700102F](#) [HLMP1700106F](#) [HLMP1700107F](#) [HLMP1790101F](#) [HLMP1790103F](#) [LTL-4211NHBP](#) [5390H3](#) [551-](#)
[2802F](#) [552-0794-810F](#) [553-0222-812F](#) [HT3-BC-T](#) [564-0700-831F](#) [WP59BLGEW](#) [103-3101-1231-403](#) [5502407811F](#) [550-3007-810F](#) [551-](#)
[3307MF](#) [552080-1](#) [573-2399-100F](#) [592-2020-302F](#) [5932-927-2701-3F](#) [SMF-HM1530SRD-509](#) [SSF-LXH100MID](#) [SSF-LXH2103SRSDRP](#)
[SSF-LXH555USBW](#) [WP937SB/4YGW](#) [WP937EB2EGW](#) [551-0312-802F](#) [553-0110-802F](#) [561-5501-050F](#) [6202T3-5VLC](#) [LTL-307G08A-D](#)
[CMD57164](#) [568-2231-313F](#)